



84-8 FEED MIXER OPERATION AND PARTS MANUAL

**ROTO-MIX
P.O. BOX 1724
2205 E. Wyatt Earp Blvd.
Dodge City, Kansas 67801
(620) 225-1142**

© ROTO-MIX 2006

SERIAL NUMBER _____

TABLE OF CONTENTS

WARRANTY.....	4
SCALES WARRANTY & SERVICE POLICY.....	5
OPERATOR QUALIFICATIONS.....	6
SAFETY PAGES.....	7-11
PREPARING TRACTOR FOR TRAILER MIXER	12
SAFETY DECALS.....	13-14
OPERATION OF MIXER.....	15-19
CHAIN TENSION & LOADING INSTRUCTIONS	20
HAY PROCESSOR INFORMATION.....	21-22
LUBRICATION CHART	23
84-8 SPECIFICATIONS	24
PORTABLE & STATIONARY & TRAILER DIMENSIONS	25-26
REPAIR PARTS TABLE OF CONTENTS	27



Limited Warranty Statement

ROTO-MIX LLC warrants to the original purchaser all products manufactured by it to be free from defects in material and workmanship under normal use and service.

ROTO-MIX's obligation under this warranty is limited to repairing or replacing, as the company may elect, free of charge and without charge for installation, at the place of business of a dealer or distributor authorized to handle the equipment covered by this warranty or at a ROTO-MIX facility, any parts that prove, in the company's judgment, to be defective in material or workmanship within one (1) year after delivery to the original purchaser, and still owned by the original purchaser. This warranty shall in no way make ROTO-MIX liable to anyone for personal injuries or damages, loss of time, or expense of any kind either direct or indirect resulting from part failure or defect. This warranty is subject to acts of God, fire and existing conditions of supply and demand, or production, or ability or inability to deliver, or for any other valid reason beyond the reasonable control of ROTO-MIX, to obtain materials, manufactured replacement parts, or make delivery thereof. No distributor, dealer, agent, or ROTO-MIX employee (other than the CEO or President in writing) is authorized to extend any other or further express or implied warranty or incur any additional obligation on ROTO-MIX's behalf in connection with the sale of this product.

If ROTO-MIX, or its duly authorized representative, shall find that such returned part or parts are defective and such defects, or defect, are included in and covered by said warranty, then such defective part or parts shall promptly be replaced without charge to the purchaser, F.O.B. the ROTO-MIX plant.

Product Registration - It is a condition of this warranty that the original purchaser must fill out the warranty card furnished by ROTO-MIX and that it be returned to ROTO-MIX within 10 days of purchase and be recorded in ROTO-MIX's owner file for this warranty to be valid. In the event an owner's card is not on file at the ROTO-MIX office, the warranty period will extend only from date equipment was picked up or shipped from the ROTO-MIX plant.

Maintenance - It is the customer's responsibility to maintain their equipment in accordance with the instructions provided in the Operator's Manual. ROTO-MIX recommends that you keep records and receipts; you may be asked to prove that maintenance instructions have been followed.

Operation - It is the customer's responsibility to operate the equipment only for the purpose for which it was designed and in accordance with all safety and operational recommendations contained in the Operators Manual. If a defect in materials or workmanship occurs, it is the customer's responsibility to cease operating the equipment until authorized repairs are made. **Damage, which occurs from continued operation, may not be covered by this warranty.**

What this Warranty Covers

This warranty covers failures caused by defects in materials or workmanship only.

This Warranty does not cover failures caused by:

- Improper operation
- Natural calamities
- Unauthorized modifications
- Unauthorized repairs
- Use of Non ROTO-MIX parts
- Neglected maintenance
- The use of PTO Shaft Adaptors
- Usage contrary to the intended purpose of the product

This Warranty does not cover replacement of Wear or Maintenance Items including, but not limited to.

- Lubricants
- Filters
- Hoses
- Tires
- Augers
- Wipers
- Chains
- Idlers
- Batteries
- Blades
- Belts

This Warranty does not cover:

- Pickup and delivery of the equipment
- Service Calls or Travel Time to and from sites
- Rental of replacement equipment during repair period
- Products that have been declared a total loss and subsequently salvaged
- Overtime labor charges
- ROTO-MIX is not responsible and will not be liable for damage caused to persons or property, commercial loss, loss of time or production, loss of use by reason of the installation or use of ROTO-MIX products or their mechanical failure.

Right to Make Changes

ROTO-MIX reserves the right to make any changes to a ROTO-MIX product at any time without incurring any obligation with respect to any product previously ordered, sold or shipped, with or without notice.

Parts Warranty

ROTO-MIX warranties replacement parts against defects in materials or workmanship for a period of 90 days or the remainder of the product warranty, whichever is longer. Remedy for defective replacement parts for units that are beyond the original product warranty, will be limited to replacement of the failed part. Failures that are due to damage, improper installation, lack of maintenance or improper operation will not be covered.

ROTO-MIX 2205 East Wyatt Earp Blvd., Dodge City, KS 67801 (620) 225-1142 Fax: (620) 225-6370

SCALES WARRANTY & SERVICE POLICY

DIGI-STAR SCALE SYSTEMS

Digi-Star, LLC warrants for a period of one year from date of installation, to correct by repair or replacement, at Digi-Star's option, any defect in material or workmanship in any part of this product. In the event of replacement, Digi-Star's sole obligation shall be to provide replacement products or parts. F.O.B. Digi-Star, LLC, W5527 Hwy 106, Fort Atkinson, WI 53538 USA.

WEIGH-TRONIX SCALE SYSTEMS

WEIGH-TRONIX warrants for a period of one year from date of installation, to correct by repair or replacement, at Weigh-Tronix's option, any defect in material or workmanship in any part of this product. In the event of replacement, Weigh-Tronix's sole obligation shall be to provide replacement products or parts. F.O.B. Avery Weigh-Tronix, 1000 Armstrong Drive, Fairmont, MN 56031-1439 USA.

OPERATOR QUALIFICATIONS

Operation Of this mixer/feeder shall be limited to competent and experienced persons. In addition, anyone who will operate or work around a mixer/feeder must use good common sense. In order to be qualified, he or she must also know and meet all other qualifications, such as:

1. Some regulations specify that no one under the age of sixteen (16) may operate power machinery. It is your responsibility to know what these regulations are in your area and/or situation.
2. Current OSHA regulations state in part: At the time of initial assignment and at least annually thereafter, the employer shall instruct **EVERY** employee in the safe operation and servicing of all equipment with which the employee is, or will be involved.
3. Unqualified persons are to **STAY OUT OF THE WORK AREA.**
4. A person who has not read and understood all operating and safety instructions is not qualified to operate the machinery.

FAILURE TO READ THIS MIXER/FEEDER MANUAL AND ITS SAFETY INSTRUCTIONS IS A MISUSE OF THE EQUIPMENT.



SAFETY

TAKE NOTE! THIS SAFETY ALERT SYMBOL FOUND THROUGHOUT THIS MANUAL IS USED TO CALL YOUR ATTENTION TO INSTRUCTIONS INVOLVING YOUR PERSONAL SAFETY AND THE SAFETY OF OTHERS. FAILURE TO FOLLOW THESE INSTRUCTIONS CAN RESULT IN INJURY OR DEATH.



THIS SYMBOL MEANS

-ATTENTION!

-BECOME ALERT!

-YOUR SAFETY IS INVOLVED!

SIGNAL WORDS: Note the use of the signal words **DANGER**, **WARNING**, and **CAUTION** with the safety messages. The appropriate signal word for each has been selected using the following guidelines:

DANGER: Indicates an imminently hazardous situation that, if not avoided, will result in serious injury or death. This signal word is to be limited to the most extreme situations typically for machine components which, for functional purposes, cannot be guarded.

WARNING: Indicates a potentially hazardous situation that, if not avoided, will result in serious injury or death, and includes hazards that are exposed when guards are removed. It may also be used to alert against unsafe practices.

CAUTION: Indicates a potentially hazardous situation that, if not avoided, may result in minor or moderate injury. It may also be used to alert against unsafe practices.

If you have questions not answered in this manual or require additional copies or the manual is damaged, please contact your dealer or ROTO-MIX, 2205 E. Wyatt Earp, Dodge City, Kansas, 67801. (Telephone) 620-225-1142 (Fax) 620-225-6370

SAFETY FIRST

REMEMBER: The careful operator is the best operator. Most accidents are caused by human error. Certain precautions must be observed to prevent the possibility of injury or death.



DO NOT ALLOW PERSONNEL OTHER THAN THE QUALIFIED OPERATOR NEAR THE MACHINE.



NEVER START MACHINE UNTIL ALL GUARDS AND SAFETY SHIELDS ARE IN PLACE.



DO NOT CLEAN, ADJUST OR LUBRICATE THE MACHINE WHILE IT IS IN MOTION.



BEFORE STARTING TRACTOR ENGINE, BE SURE PTO SHIELDS TURN FREELY.



LOOSE OR FLOPPY CLOTHING SHOULD NOT BE WORN BY THE OPERATOR.

OPERATING PRECAUTIONS & INSTRUCTIONS:

- A. Check to see that no obstructions are present in the mixer prior to start up.
- B. Before loading, run the mixer empty and check all operations.
- C. Do not overload the mixer, as the mixing efficiency may be reduced and unit damage may occur. (See loading instructions).
- D. Remove all moisture drain plugs if the mixer is going to set in the rain or snow.
- E. Be sure all shields are in place before operation.
- F. Use common sense when operating.



EQUIPMENT SAFETY GUIDELINES



Safety of the operator is one of the main concerns in designing and developing a new piece of equipment. Designers and manufactures build in as many safety features as possible. However, every year many accidents occur which could have been avoided by a few seconds of thought and a more careful approach to handling equipment. You, the operator, can avoid many accidents by observing the following precautions in this section. To avoid personal injury, study the following precautions and insist those working with you, or for you, follow them.

In order to provide a better view, certain photographs or illustrations in this manual may show an assembly with a safety shield removed. However, equipment should never be operated in this condition. Keep all shields in place. If shield removal becomes necessary for repairs, replace the shield prior to use.

Replace any CAUTION, WARNING, DANGER or instruction safety decal that is not readable or is missing. Location of such decals are indicated in this manual.

Do not attempt to operate this equipment under the influence of drugs or alcohol.

Review the safety instructions with all users annually.

This equipment is dangerous to children and persons unfamiliar with its operation. The operator should be a responsible adult familiar with farm machinery and trained in this equipment's operations. Do not allow persons to operate or assemble this unit until they have read this manual and have developed a thorough understanding of the safety precautions and of how it works.

To prevent injury or death, use a tractor equipped with a Roll Over Protective System (ROPS). Do not paint over, remove or deface any safety signs or warning decals on your equipment. Observe all safety signs and practice the instructions on them.

Never exceed the limits of a piece of machinery. in its ability to do a job, or to do so safely, is in question - **DON'T TRY IT.**



LIGHTING AND MARKING

It is the responsibility of the customer to know the lighting and marking requirements of the local highway authorities and to install and maintain the equipment to provide compliance with the regulations. Add extra lights when transporting at night or during periods of limited visibility.

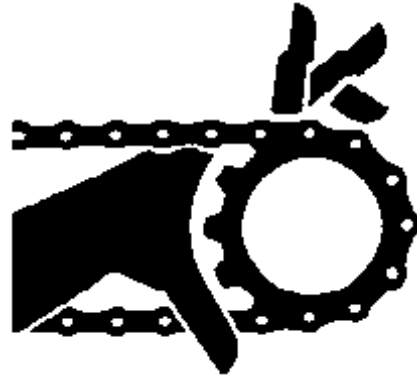


KEEP ALL SHIELDS IN PLACE

Do not operate mixer/feeder without safety shields in place.

Rotating parts can crush or dismember causing personal injury or death.

Disconnect PTO driveline before removing shields for adjustment or service.



OPERATE MIXER/FEEDER SAFELY

Rotating parts can entangle or strike people, resulting in personal injury or death.

Never enter a mixer/feeder while in operation.

Operate the mixer/feeder from the operator's seat only.

Do not exceed load capacity of the mixer/feeder. (See loading instructions).

Reduce speed when turning or traveling on rough terrain.

Avoid traveling over loose fill, rocks, ditches or holes.

Keep transmissions in gear when traveling downhill.



KEEP RIDERS OFF MIXER/FEEDER

Keep riders off.

Riders are subject to injury such as being struck by foreign objects and being thrown off. Riders also obstruct the operator's view resulting in the machine being operated in an unsafe manner.





STAY CLEAR OF ROTATING DRIVELINES

Entanglement in rotating driveline can cause serious injury or death.

Keep tractor master shield and driveline shields in place at all times. Make sure rotating shields turn freely.

Wear close fitting clothing. Stop the engine and be sure PTO driveline is stopped before making adjustments, connections, or cleaning out PTO driven equipment .



PREVENT BATTERY EXPLOSIONS

Keep sparks, lighted matches, and open flame away from the top of battery. Battery gas can explode.

Never check battery charge by placing a metal object across the posts. Use a volt-meter or hydrometer.

Do not charge a frozen battery; it may explode. Warm battery to 16C (60F).



AVOID HIGH-PRESSURE FLUIDS

Escaping fluid under pressure can penetrate the skin causing serious injury or death.

Avoid the hazard relieving pressure before disconnecting hydraulic or other lines. Tighten all connections before applying pressure.

Search for leaks with a piece of cardboard. Protect hands and body from high pressure fluids.

If an accident occurs, see a doctor immediately. Any fluid injected into the skin must be surgically removed within a few hours or gangrene may result. Doctors unfamiliar with this type of injury should reference a knowledgeable medical source.





PREPARING TRACTOR FOR TRAILER MIXER

POSITIONING DRAWBAR

IMPORTANT: Drive components can be damaged from excessive speed. Under no circumstances should a feed mixer equipped with 540 RPM be operated by a tractor with 1000 RPM PTO.

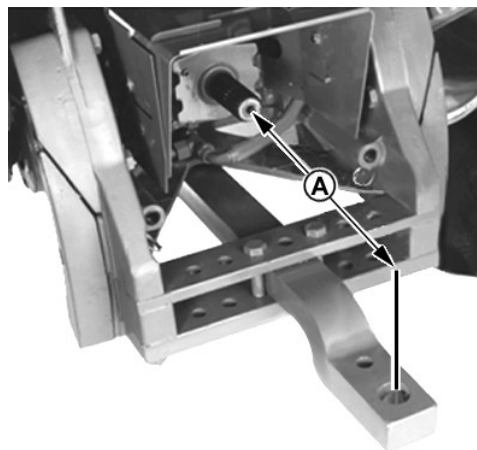
Feed mixers are available with either 540 or 1000 RPM driveline. Match tractor PTO with the feed mixer driveline.

IMPORTANT: To prevent driveline damage, adjust tractor drawbar to recommended setting. Disengage tractor PTO before turning.

Remove clevis if equipped. Turn offset drawbar down.

Adjust drawbar length:

PTO SPEED	DIMENSION (A)
540 RPM	14" (256 mm)
1000 RPM (1-3/8" - 21 SPLINE)	16" (406 mm)
1000 RPM 91-3/4" - 20 SPLINE	20" (508 mm)

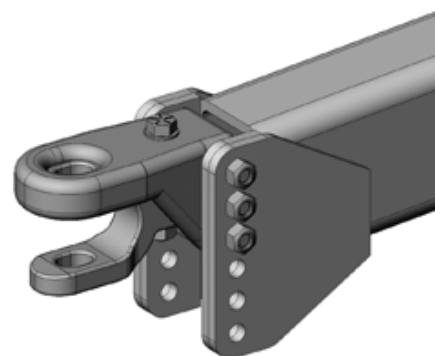


ADJUST TRAILER HITCH CLEVIS

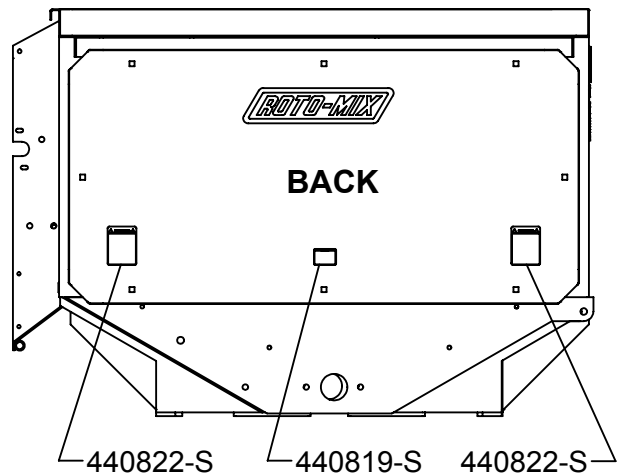
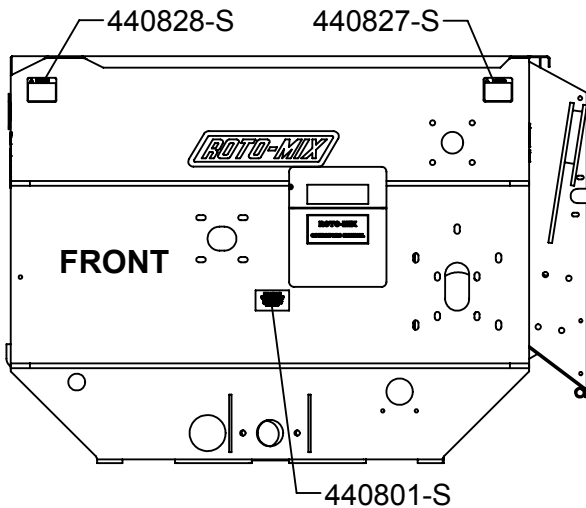
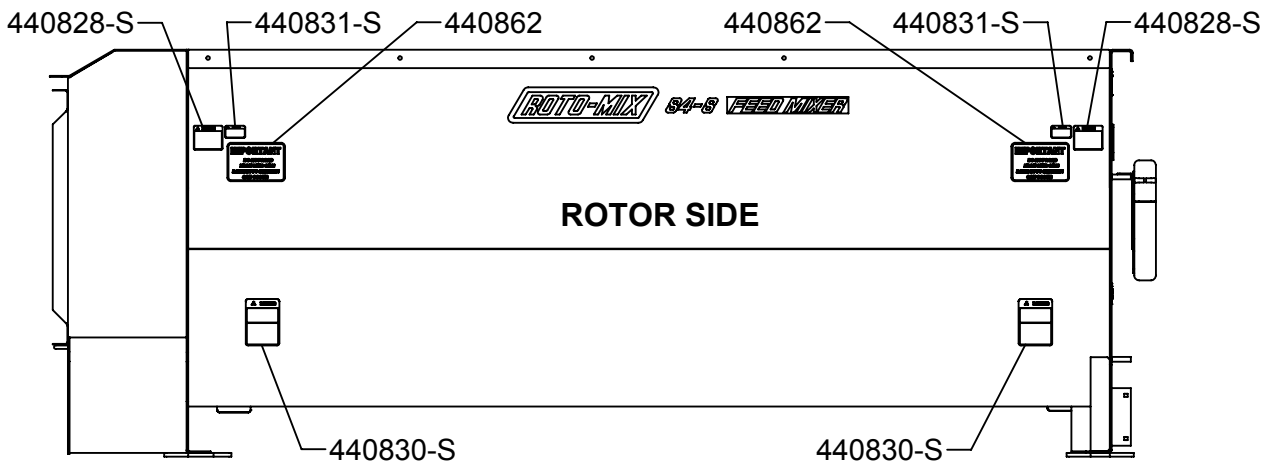
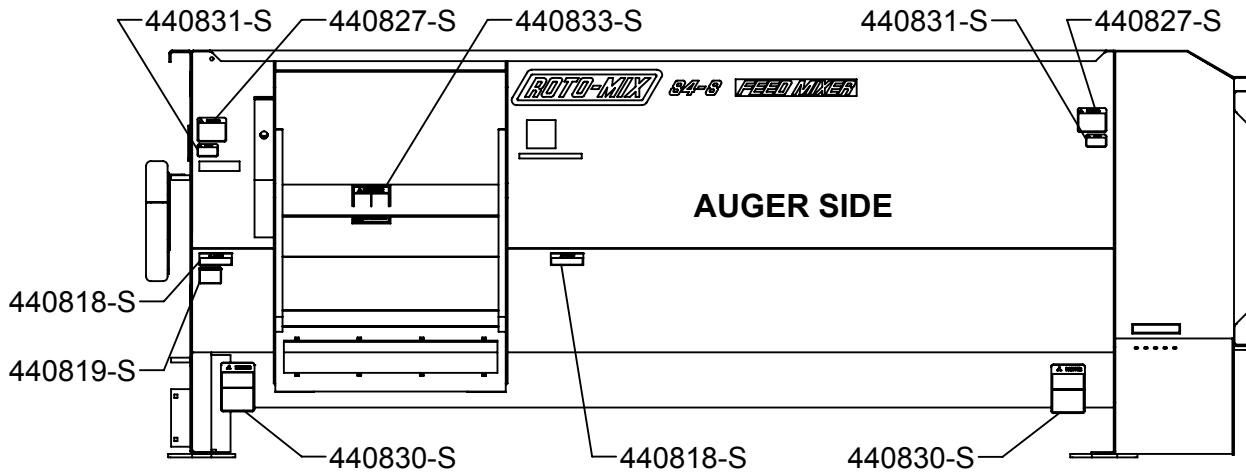
Mixer should be approximately level when attached to tractor.

Adjust clevis by changing hole location on tongue.

Hitch Pin Size --- 3/4" Dia x 7" for a 1" Dia clevis hole and 1" Dia X 7" for a 1-1/4" Dia clevis hole.



84-8 SAFETY DECALS





SAFETY DECAL CARE



Keep safety decals and signs clean and legible at all times.

Replace safety decals and signs that are missing or have become illegible.

Replaced parts that displayed a safety sign should also display the current sign.

Safety decals or signs are available from your dealer or the ROTO-MIX manufacturing plant.

How to Install Safety Decals:

Be sure that the installation area is clean and dry.

Decide on the exact position before you remove the backing paper.

Remove the smallest portion of the split backing paper.

Align the decal over the specified area and carefully press the small portion with the exposed sticky backing in place.

Slowly peel back the remaining paper and carefully smooth the remaining portion of the decal in place.

Small air pockets can be pierced with a pin and smoothed out using the piece of decal backing paper.



PRACTICE FIRE PREVENTION

Keep fire extinguishers accessible at all times. Use the extinguisher recommended for the material being processed. It should be rated safe for use on electrical fires.

Never smoke close to combustible material.

Clean the area before welding or other activities which may make sparks.

Keep all components that generate excessive heat clear of oil and other combustible materials.



REMEMBER

Your best assurance against accidents is a careful and responsible operator. If there is any portion of this manual or function you do not understand, contact your dealer or the ROTO-MIX plant.

BEFORE OPERATION:

Carefully study and understand this manual.

Do not wear loose-fitting clothing which may catch in moving parts.

Always wear protective clothing and substantial shoes.

Keep wheel lug nuts or bolts tightened to specified torque.

Assure that agricultural implement tires are inflated evenly.

Give the unit a visual inspection for any loose bolts, worn parts or cracked welds, and make necessary repairs. Follow the maintenance safety instructions included in this manual.

Be sure that there are no tools lying on or in the mixer/feeder.

Do not use the unit until you are sure that the area is clear, especially children and animals.

Because it is possible that this mixer/feeder may be used in dry areas or the presence of combustibles, special precautions should be taken to prevent fires and fire fighting equipment should be readily available.

Don't hurry the learning process or take the unit for granted. Ease into it and become familiar with your new mixer/feeder.

Practice operation of your mixer/feeder and its attachments. Completely familiarize yourself and other operators with its operation before using.

Securely attach to towing unit. Use a high strength, appropriately sized hitch pin with a mechanical retainer.

Do not allow anyone to stand between the tongue or hitch and the towing vehicle when backing up to the mixer/feeder.



DURING OPERATION:

Beware of bystanders, **particularly children!** Always look around to make sure that it is safe to start the engine of the towing vehicle or move the unit. This is particularly important with higher noise levels and quiet cabs, as you may not hear people shouting.

NO PASSENGERS ALLOWED - Do not carry passengers anywhere on, or in, the tractor or equipment, except as required for operation.

Keep hands and clothing clear of moving parts.

Do not clean, lubricate or adjust your mixer/feeder while it is moving.

Be especially observant of the operating area and terrain - watch for holes, rocks or other hidden hazards. Always inspect the area prior to operation.

Do not operate near the edge of drop-offs or banks.

Do not operate on steep slopes as overturn may result.

Operate up and down (not across) intermediate slopes. Avoid sudden starts and stops.

Pick the levellest possible route when transporting across fields. Avoid the edges of ditches or gullies and steep hillsides.

Be extra careful when working on inclines.

Periodically clear the equipment of brush, twigs or other materials to prevent buildup of dry combustible materials.

Maneuver the tractor or towing vehicle at safe speeds.

Avoid overhead wires or other obstacles. Contact with overhead lines could cause serious injury or death.

Avoid loose fill, rocks and holes; they can be dangerous for equipment operation or movement. Allow for unit length when making turns.

Do not walk or work under raised components or attachments unless securely positioned and blocked.

Keep all bystanders, pets and livestock clear of the work area.

Operate the towing vehicle from the operator's seat only.

Never stand alongside of the unit with engine running. Never attempt to start engine and/or operate machine while standing alongside of unit.



DURING OPERATION (CONT.)

Never leave running mixer/feeder unattended.

As a precaution, always recheck the hardware on mixer/feeder following every 100 hours of operation. Correct all problems. Follow the maintenance safety procedures.



FOLLOWING OPERATION:

Following operation, or when unhitching, stop the tractor or towing vehicle, set the brakes, disengage the PTO and all power drives, shut off the engine and remove the ignition keys.

Store the unit in an area away from human activity.

Do not park equipment where it will be exposed to livestock for long periods of time. Damage and livestock injury could result.

Do not permit children to play on or around the stored unit.

Make sure parked machine is on a hard, level surface and engage all safety devices.

Wheel chocks may be needed to prevent unit from rolling.



HIGHWAY AND TRANSPORT OPERATIONS:

Adopt safe driving practices:

Keep the brake pedals latched together at all times. **Never use independent braking with machine in tow as loss of control and/or upset of unit can result.**

Always drive at a safe speed relative to local conditions and ensure that your speed is low enough for an emergency stop to be safe and secure. Deep speed to a minimum.

Reduce speed prior to turns to avoid the risk of overturning.

Avoid sudden uphill turns on steep slopes.

Always keep the tractor or towing vehicle in gear to provide engine braking when going downhill. Do not coast.

Do not drink and drive.



HIGHWAY AND TRANSPORT OPERATIONS (CONT.):

Comply with state and local laws governing highway safety and movement of farm machinery on public roads.

Use approved accessory lighting flags and necessary warning devices to protect operators of other vehicles on the highway during daylight and nighttime transport.

The use of flashing amber lights is acceptable in most localities. However, some localities prohibit their use. Local laws should be checked for all highway lighting and marking requirements.

When driving the tractor and mixer/feeder on the road or highway under 20 MPH (40 KPH) at night or during the day, use flashing amber warning lights and a slow moving vehicle (SMV) identification emblem.

Plan your route to avoid heavy traffic.

Be a safe courteous driver. Always yield to oncoming traffic in all situations, including narrow bridges, intersections, etc.

Be observant of bridge loading ratings. Do not cross bridges rated lower than the gross weight at which you are operating.

Watch for obstructions overhead and to the side while transporting.

Always operate mixer/feeder in a position to provide maximum visibility at all times. Make allowances for increased length and weight of the mixer/feeder when making turns, stopping the unit, etc.



PERFORMING MAINTENANCE:

Good maintenance is your responsibility. Poor maintenance is an invitation to trouble.

Make sure there is plenty of ventilation. Never operate the engine of the towing vehicle in a closed building. The exhaust fumes may cause asphyxiation.

Before working on the mixer/feeder, stop the towing vehicle, set the brakes, disengage the PTO and all power drives, shut off the engine and remove the ignition keys.

Be certain all moving parts on attachments have come to a complete stop before attempting to perform maintenance.

Always use a safety support and block the wheels. Never use a jack to support the machine.



PERFORMING MAINTENANCE (CONT.):

Always use the proper tools or equipment for the job at hand.

Use extreme caution when making adjustments.

Never use our hands to locate hydraulic leaks on attachments. Use a small piece of cardboard or wood. Hydraulic fluid escaping under pressure can penetrate the skin.

When disconnecting hydraulic lines, shut off hydraulic supply and relieve all hydraulic pressure.

Openings in the skin and minor cuts are susceptible to infection from hydraulic fluid. If injured by escaping hydraulic fluid, see a doctor at once. Gangrene can result. Without immediate treatment, serious infection and reactions can occur.

Replace all shields and guards after servicing and before moving.

After servicing, be sure all tools, parts and service equipment are removed.

Do not allow grease or oil to build up on any step or platform.

Never replace hex bolts with less than grade five (5) bolts unless otherwise specified.

Where replacement parts are necessary for periodic maintenance and servicing, genuine factory replacement parts must be used to restore your equipment to original specifications. ROTO-MIX will not claim responsibility for use of unapproved parts and/or accessories and other damages as a result of their use.

If equipment has been altered in any way from original design, ROTO-MIX does not accept any liability for injury or warranty.

A fire extinguisher and first aid kit should be kept readily accessible while performing maintenance on this mixer/feeder.

READ THE FOLLOWING BEFORE WELDING ON THIS MIXER/FEEDER

When welding on your mixer/feeder, do not allow the current to flow through the ball bearings or the roller chains. Ground directly to the item being welded.

Always disconnect the scale instrumentation from the weigh bars or load cells and the power source. Be sure the current does not pass through weigh bars or load cells or scale indicator. The alternator should always be disconnected if the mixer/feeder is not disconnected from the towing vehicle.

CHAIN TENSION

All the single roller chain should be tightened to the point of .042" (1 mm) (dime) clearance is reached between the coils of the 1-1/4" idler tension springs and .068" (1.7 mm) (nickel) clearance is reached between the coils of the 1-3/4" idler tension springs.

LOADING INSTRUCTIONS & PRECAUTIONS

- A.** Do not add side board extensions to the mixer.
- B.** Do not overload the mixer. Mixer capacity can be reached by weight or volume. By volume, the rotor bars and wipers should always be visible at the peak of the rotor cycle. If the rotor is completely submerged under the mix, mixing efficiency may be reduced, spillage may occur, and damage to the mixer may result. Maximum capacity by weight can be calculated by multiplying 28 pounds times mixer cubic foot capacity.
- C.** Load molasses and/or liquid protein supplements first with mixer not running, then add one (1) commodity ingredient before starting the mixer. For the shortest mixing time and maximum mixing efficiency, these items should be added at the first of the loading process.
- D.** When adding minute supplements or medication in non-liquid form, these ingredients should be loaded in the middle of the loading sequence.

E. RATIONS WITH GROUND HAY:

1. Load molasses (or liquids) first with the mixer not running.
2. Load one (1) commodity ingredient and start mixer.
3. Finish loading commodities, silage, or ground hay. Loading ground hay after mixing liquids with another commodity will prevent molasses hay balls.

NOTE: These procedures may not work on all rations. Loading sequences may be changed to give best possible mix.

ATTENTION:

- F.** Never load the mixer from the right side (side opposite the discharge) with a front end loader or payloader.

OPERATION:

Trailer mounted mixers can be furnished with single tractor controls or dual controls. Dual controls are standard unless specified.

1. Single controls operate as follows: Spout goes down first - door opens second. Door closes first - spout goes up second.
2. The disadvantage of the single control is that it does not let you adjust the spout height without first closing the door.

ROTO-HAY PROCESSOR

The ROTO-HAY PROCESSOR is designed for processing hay into the mixer. This eliminates the need for grinding hay, which saves the time and expense of grinding and can save up to 18% loss from wind and handling.

THE ROTO-HAY PROCESSOR MUST BE PROPERLY USED ALWAYS USE DRY HAY

Drain rain water out of mixer before use. 1" of rain in a 354-12 equals (54 gal) 440 lbs. of water which will increase the moisture in 1000 lbs. of dry hay (12%) to 38% moisture or 500 lbs. of dry hay to 53% moisture.

The ROTO-HAY PROCESSOR will handle small amounts of damp hay, but this is done at your own risk. ROTO-MIX will not warranty bent or broken rotor tubes, bent or broken augers, or bent hay pans caused from misuse, wet hay, foreign objects, and/or overloading.

HAY PREPARATION

1. **SMALL BALES** - (60 to 150 lbs., 2 or 3 wire) Remove twine or wire from bales and break bales apart by pushing into a pole with a front end loader.
2. **LARGE SQUARE BALES** - (3' x 4' x 8' or 4' x 4' x 8')
 - A. Position bale so you can get to end of bale with front end loader.
 - B. Remove twine or wrapping.
 - C. With front end loader, pull a 12" flake away from the bale so it can be picked up with loader bucket - or - by adding 3 or 4 teeth (12" long) to the top of your loader bucket, you can stab the end of the bale and pick up a 12" flake to lay on the mixer hay pan.
3. **ROUND BALES**
 - A. Remove twine or wrapping.
 - B. Cut bale with a ROTO-BALE CUTTER a minimum of 5 times to part the bale into a minimum of 12" chunks. More times may be desired for ease of handling.
 - C. Break bales apart by pushing into a pole with a front end loader so the hay can be loaded in quantities of approximately 200 lbs. at a time.

LOADING INSTRUCTIONS FOR HAY PROCESSOR

Load all commodities except liquids on the discharge (auger) side with the hay pan in the raised position. The raised hay pan does not affect the mixing action

1. If molasses and/or liquid protein is used, load on the rotor side of the mixer first with the mixer not running.
2. Load one (1) grain or dry commodity in a minimum amount equal to the amount of hay to be put into mixer with the mixer not running.
3. Start the mixer and run approximately one (1) minute before adding hay.
4. With the mixer running at a minimum rotor speed of 4 RPM, load prepared hay towards the front of the hay pan on discharge side of mixer. For best results, when loading with a tractor front end loader or payloader, each bucket load should not exceed 200 lbs at one time. Allow time for the hay to be processed into the mixer before loading another 200 lbs. Repeat until desired amount of hay is processed (DO NOT OVERLOAD). Let the mixer run until desired length of hay is reached.
5. Finish loading dry commodities.
6. Load wet feeds, such as silage, after all commodities and hay are in the mixer.
7. If water is to be added to the ration - **Do this last!**

MIXER INFORMATION

The mixer trailers are equipped with recapped tires with a new tread cap.

LUBRICATION CHART

DISENGAGE PTO & SHUT OFF POWER BEFORE LUBRICATING THE MACHINE.

LOOSE OR FLOPPY CLOTHING SHOULD NOT BE WORN BY THE OPERATOR.

OIL BATH: Fill the oil bath with 30 weight motor oil to sight plug level.

GREASE BANK: Grease every 100 hours.

FRONT END BEARINGS: Grease every 100 hours.

INPUT BEARINGS: One (1) on input shaft beneath mixer/feeder. Grease every 100 hours.

PTO SHAFTS & U-JOINTS: Grease every 10 to 20 hours.

GEARBOX: Prior to operation, remove the uppermost plug and replace with vent plug provided. After the first 100 hours of operation, drain the initial oil, preferably warm. Flush the gear case with an approved non-flammable, non-toxic solvent and refill with oil. Thereafter oil should be changed every 2500 hours or every 12 months, whichever occurs first. Fill the gearbox with 1-1/2 pints of (Mobil Delvac Synthetic Gear Oil 75W-90).



84-8 SPECIFICATIONS

CAPACITY (CUBIC FEET)	80
STRUCK LEVEL CAPACITY (CUBIC FEET	92
TOP AUGER BEARING (FRONT).....	1-3/4" 4-BOLT
TOP AUGER BEARING (REAR).....	2-7/16" 4-BOLT
BOTTOM AUGER BEARING (FRONT).....	1-3/4" 4-BOLT
BOTTOM AUGER BEARING (REAR).....	2-15/16" 4-BOLT
ROTOR BEARING (FRONT)	2" 4-BOLT
ROTOR BEARING (REAR)	2-15/16" 4-BOLT
TOP AUGER SPROCKETS.....	60 B 21H & 50 B 72
BOTTOM AUGER SPROCKETS.....	60 B 15H & 60 B 45
ROTOR SPROCKET	60 B 112
INPUT SHAFT SPROCKET	50 B 15H
TOP AUGER FLIGHTING.....	13/32" x 12"OD LH 12" PITCH 13/32" x 12"OD RH 6" PITCH
BOTTOM AUGER FLIGHTING.....	13/32" x 12" OD RH & LH 12" PITCH
AUGER BOTTOM CONSTRUCTION	7GA STEEL
TUB BOTTOM CONSTRUCTION.....	7GA STEEL
RIGHT SIDE SHEET CONSTRUCTION	12GA STEEL
LEFT SIDE SHEET CONSTRUCTION	12GA STEEL
FRONT END SHEET CONSTRUCTION.....	7GA STEEL
REAR END SHEET CONSTRUCTION.....	7GA STEEL

84-8 STATIONARY DIMENSIONS

APPROXIMATE WEIGHT, LESS MOTOR

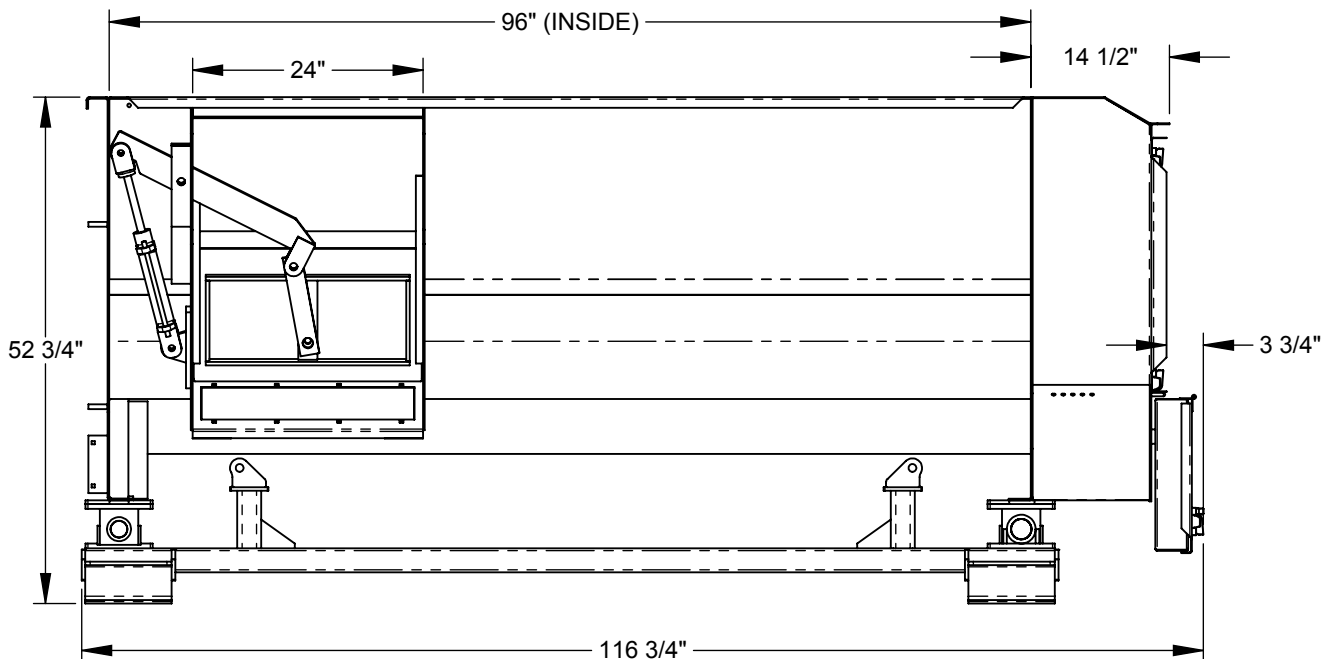
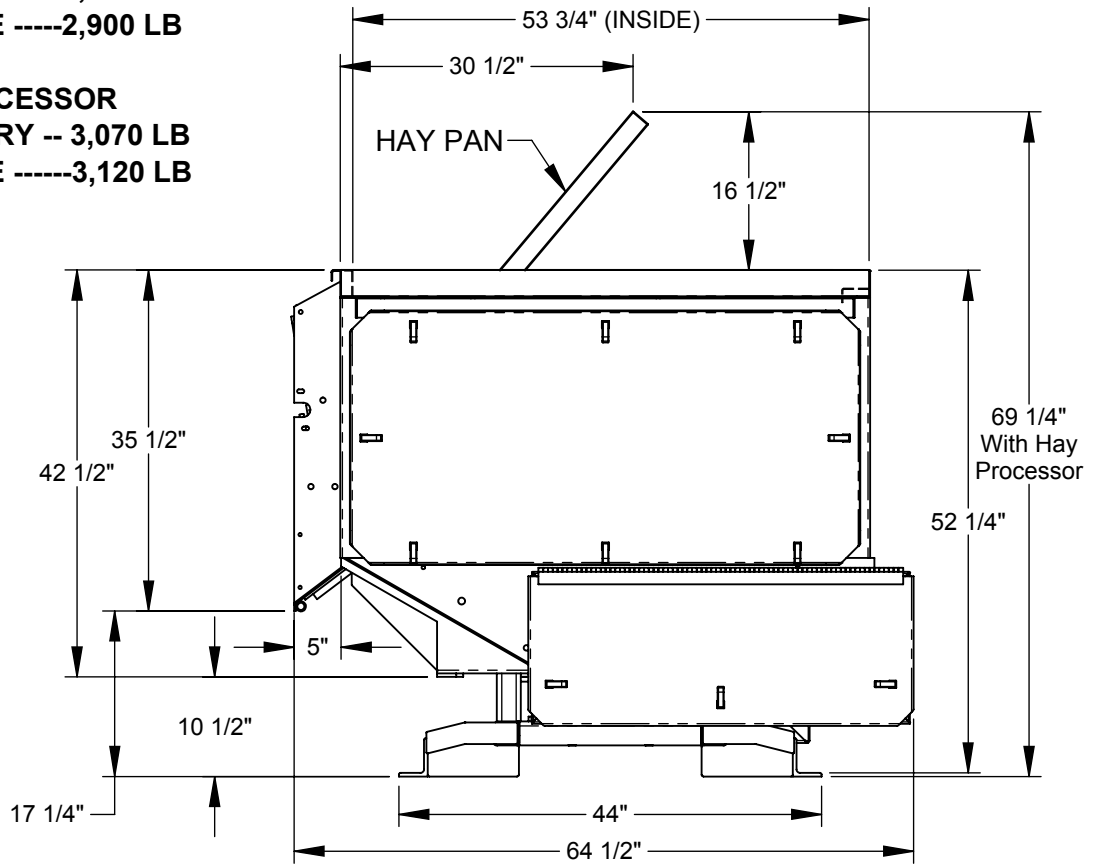
84-8 STATIONARY --2,850 LB

84-8 PORTABLE -----2,900 LB

WITH HAY PROCESSOR

84-8 STATIONARY -- 3,070 LB

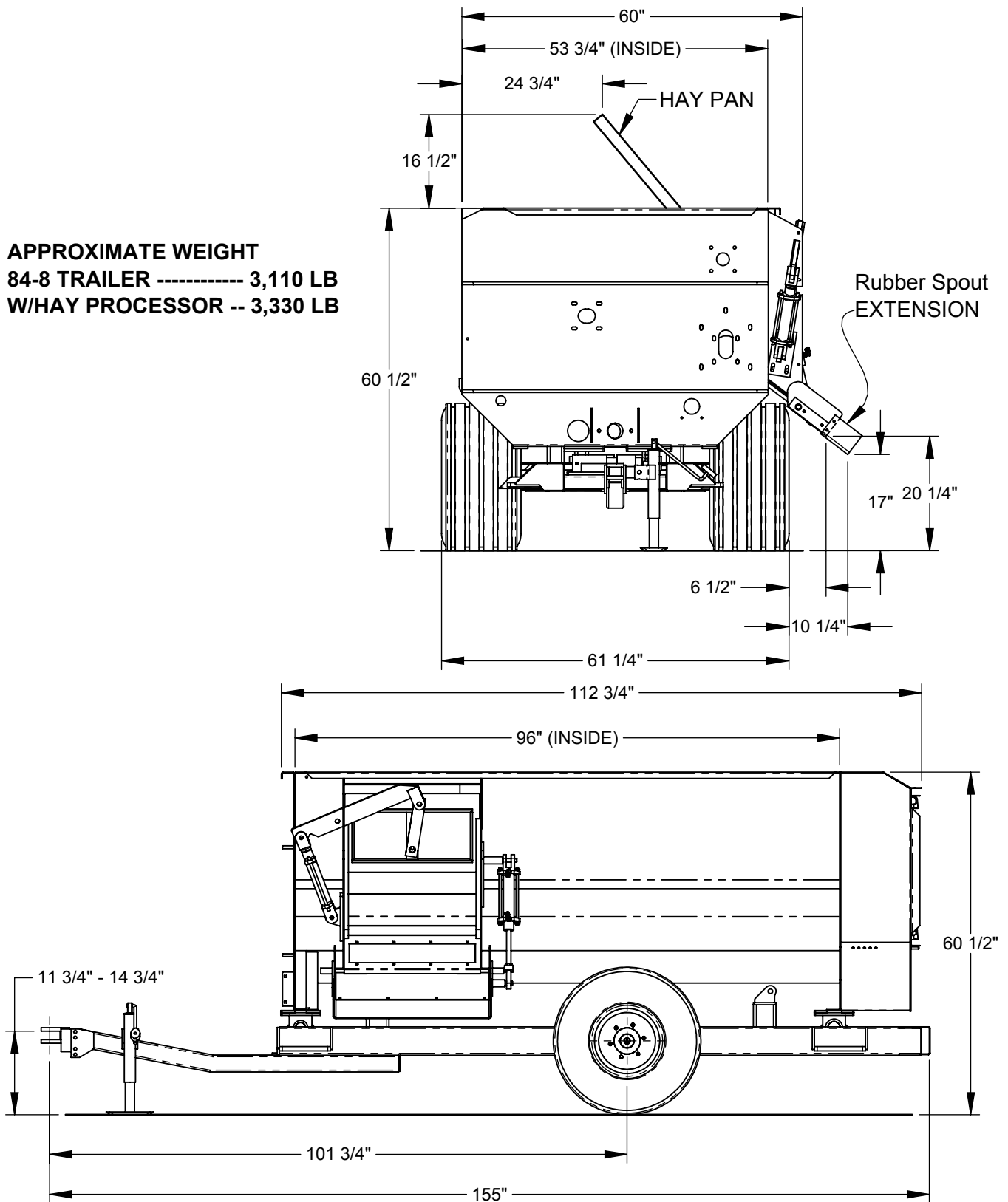
84-8 PORTABLE -----3,120 LB



All Dimensions & Specifications are Approximate and Subject to Change Without Notice.

84-8 TRAILER DIMENSIONS

APPROXIMATE WEIGHT
84-8 TRAILER ----- 3,110 LB
W/HAY PROCESSOR -- 3,330 LB

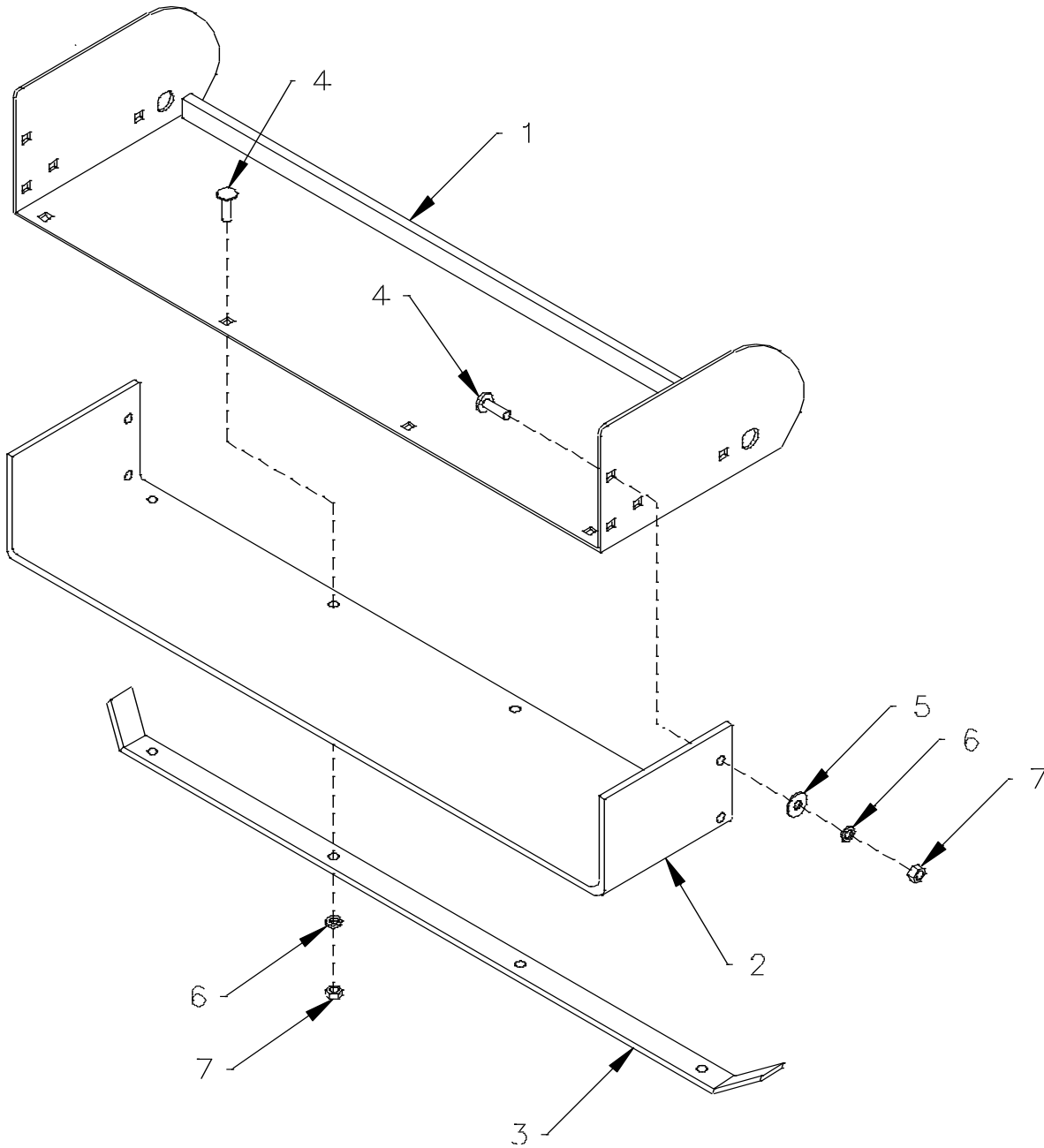


All Dimensions & Specifications are Approximate and Subject to Change Without Notice.

TABLE OF CONTENTS

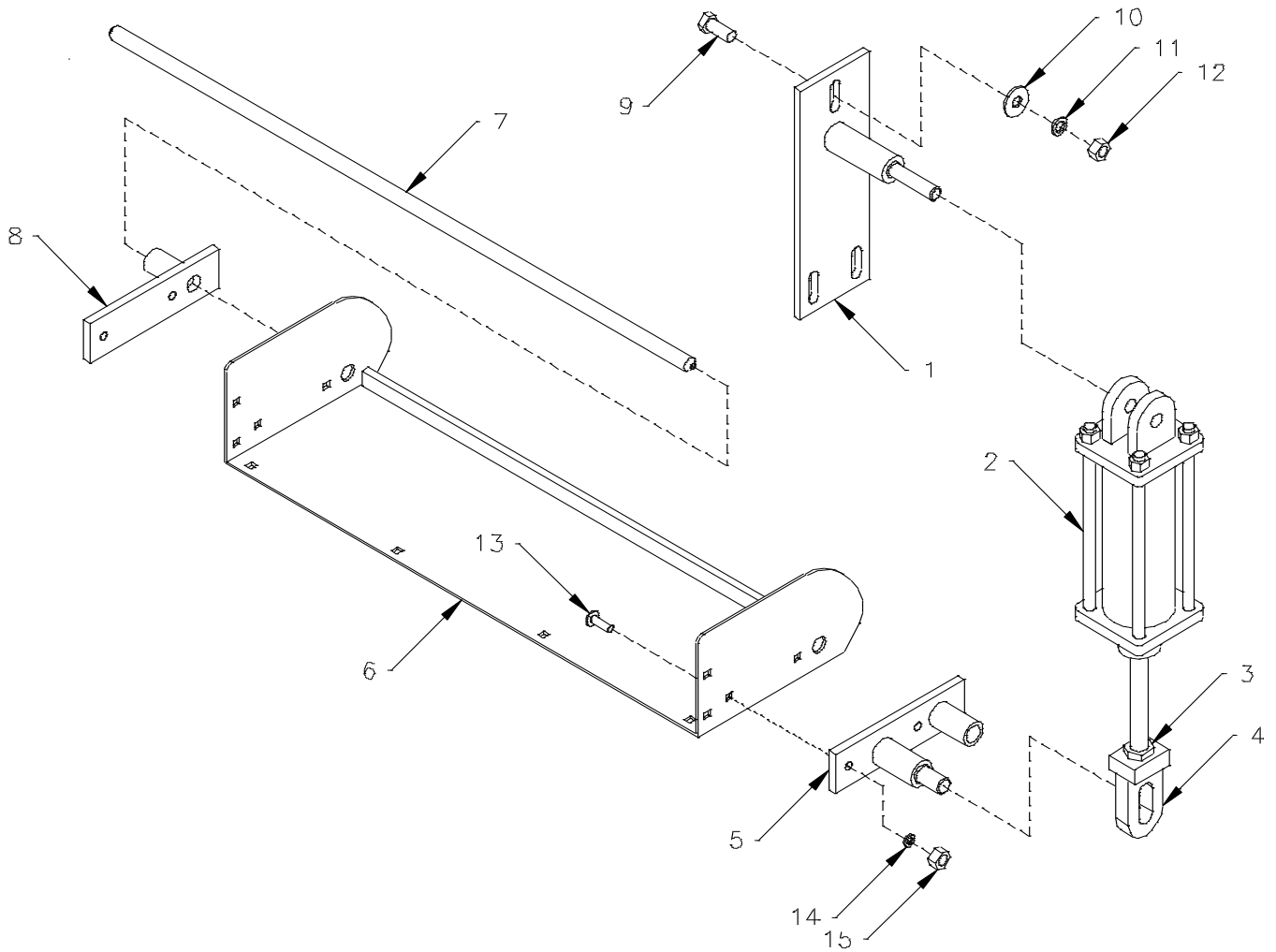
SPOUT RUBBER.....	28
TRAILER SPOUT ASSEMBLY.....	29
STATIONARY SPOUT ASSEMBLY.....	30
PORTABLE SPOUT ASSEMBLY.....	31
DOOR FRAME MAGNET ASSEMBLY.....	32
3 ARM ROTOR ASSEMBLY.....	33
8” AUGER ASSEMBLY.....	34
TRAILER & STATIONARY SCALE INDICATOR ASSEMBLY.....	35
PORTABLE SCALE INDICATOR ASSEMBLY.....	36
OIL BATH DOOR ASSEMBLY.....	37
TRAILER DISCHARGE DOOR ASSEMBLY.....	38
STATIONARY DISCHARGE DOOR ASSEMBLY.....	39
PORTABLE DISCHARGE DOOR ASSEMBLY.....	40
LUBRICATION ASSEMBLY.....	41
84-8 FRONT END ASSEMBLY.....	42
84-8 FLOATING AUGER ASSEMBLY.....	43
84-8 LOAD CELL SCALE KIT.....	44
PORTABLE & STATIONARY 2-POINT SCALE FRAME.....	45
PORTABLE & STATIONARY 3-POINT SCALE FRAME.....	46
PORTABLE & STATIONARY 4-POINT SCALE FRAME.....	47
TRAILER 2-POINT WEIGH BAR ASSEMBLY.....	48
TRAILER ASSEMBLY.....	49
TRAILER HUB & SPINDLE ASSEMBLY.....	50
TRAILER DRIVELINE ASSEMBLY.....	51
DRIVE SHAFT #338025.....	52
ROTO-HAY PROCESSOR ASSEMBLY.....	53
STATIONARY DRIVE ASSEMBLY.....	54-55
84-8 DRIVE ASSEMBLY.....	56-57
PORTABLE DRIVE ASSEMBLY.....	58-59

SPOUT RUBBER



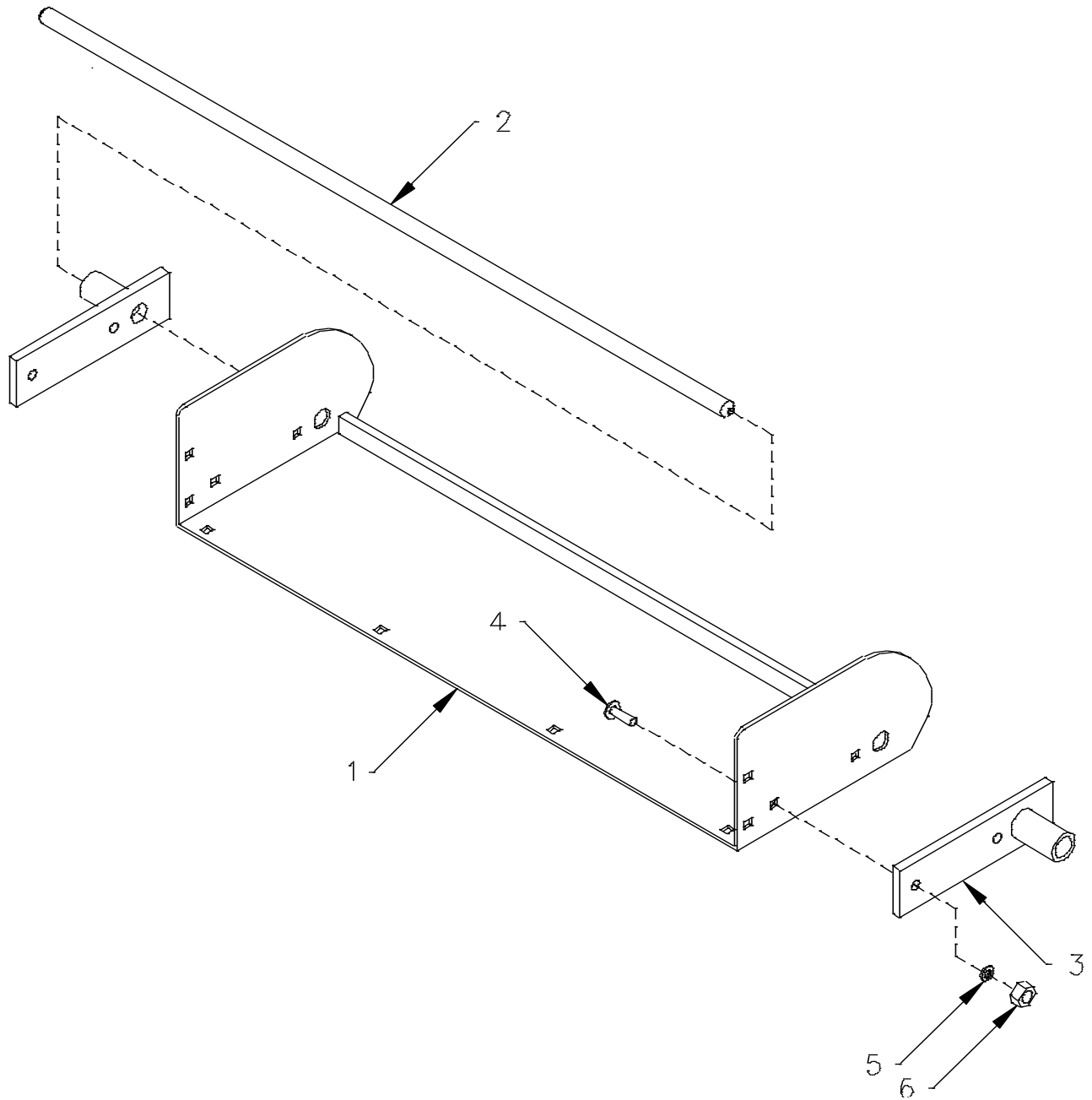
REF #	PART #	DESCRIPTION	QTY.
1	840533	SPOUT WA	1
2	140239	SPOUT RUBBER	1
3	140240	SPOUT RUBBER STRAP	1
4	407021	CARRIAGE BOLT, 5/16"18 x 1"	8
5	402405	FLAT WASHER, 5/16"	4
6	402005	SPLIT LOCKWASHER, 5/16"	8
7	400205	HEX NUT, 5/16"	8

TRAILER SPOUT ASSEMBLY



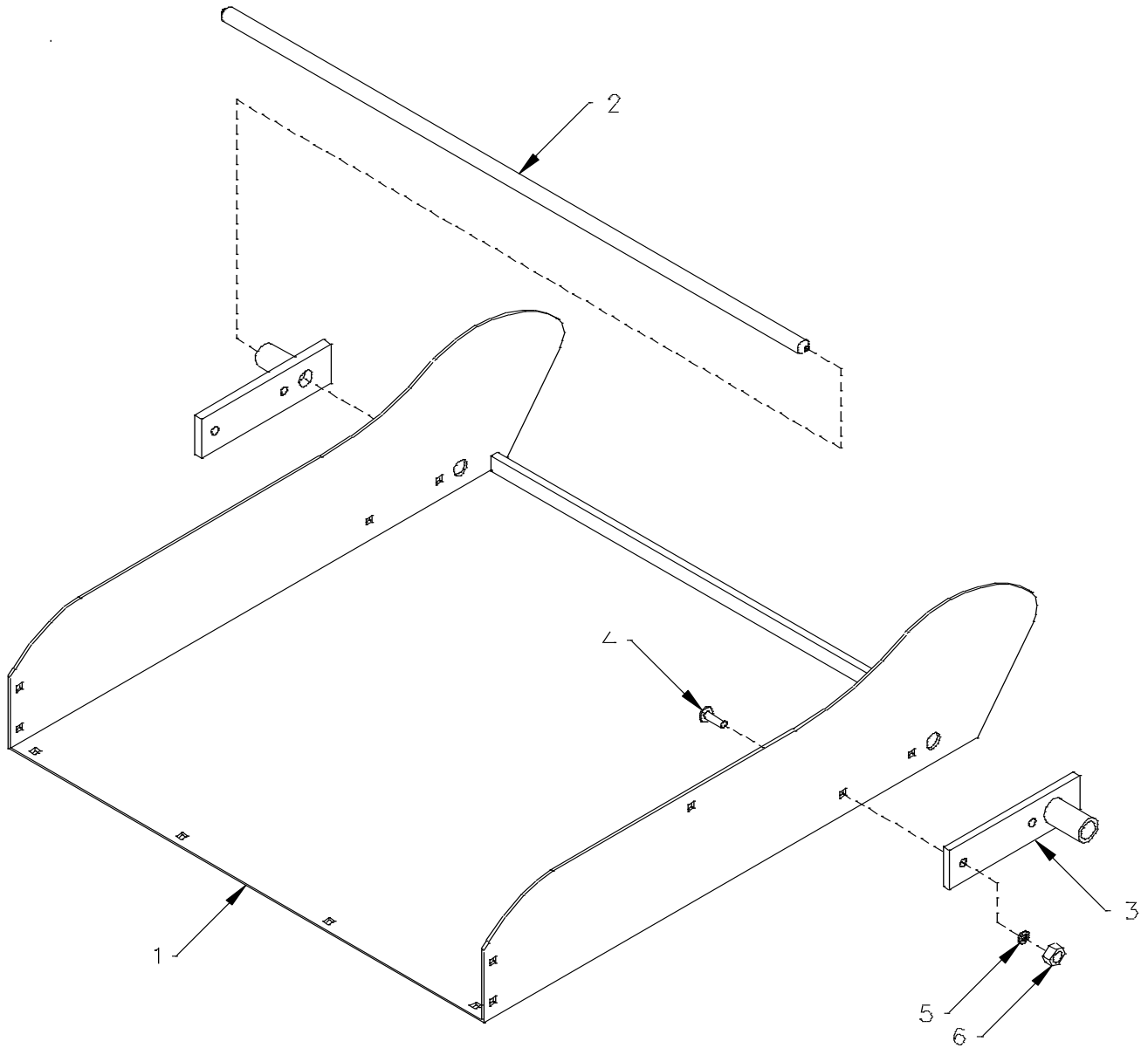
REF #	PART #	DESCRIPTION	QTY.
1	840531	SPOUT CYLINDER TOP BRACKET WA	1
2	364036	HYDRAULIC CYLINDER, 1-1/2" x 6"	1
3	400712	HEX JAM NUT, 3/4"-16	1
4	850053	SPOUT CYLINDER LUG WA	1
5	840529	SPOUT CYLINDER BRACKET WA	1
6	840533	SPOUT WA	1
7	140685	SPOUT HINGE ROD	1
8	840527	SPOUT HINGE BRACKET WA	1
9	405702	HHCS, 1/2"-13 x 1-1/4"	3
10	402408	FLAT WASHER, 1/2"	3
11	402008	SPLIT LOCKWASHER, 1/2"	3
12	400208	HEX NUT, 1/2"-13	3
13	407021	CARRIAGE BLOT, 5/16"-8 x 1"	4
14	402005	SPLIT LOCKWASHER, 5/16"	4
15	400205	HEX NUT, 5/16"-18	4

STATIONARY SPOUT ASSEMBLY



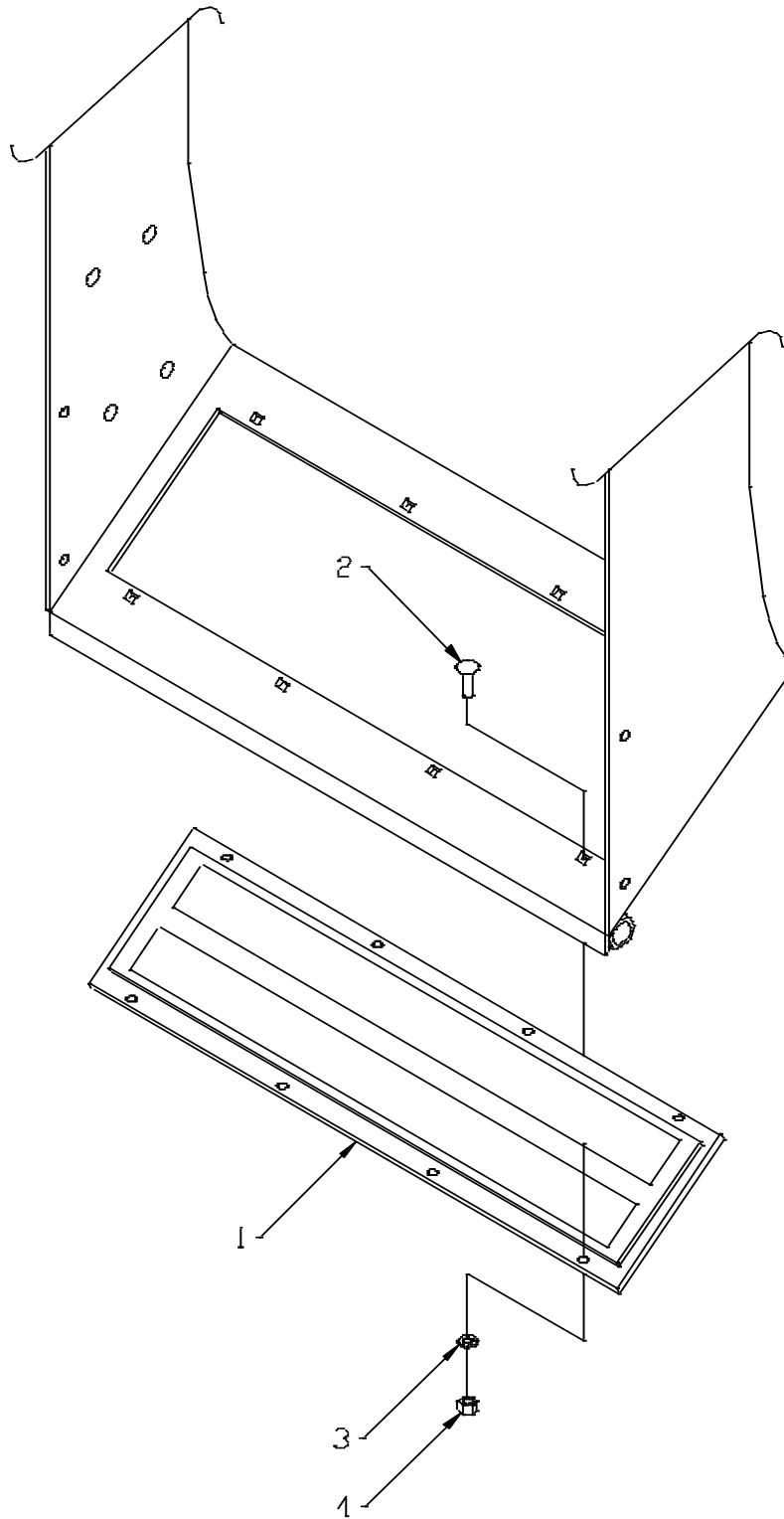
REF #	PART #	DESCRIPTION	QTY.
1	840533	SPOUT WA	1
2	140685	SPOUT HINGE ROD	1
3	840527	SPOUT HINGE BRACKET WA	1
4	407021	CARRIAGE BOLT, 5/16"-18 x 1"	1
5	402005	SPLIT LOCKWASHER, 5/16"	1
6	400205	HEX NUT, 5/16"-18	1

PORTABLE SPOUT ASSEMBLY



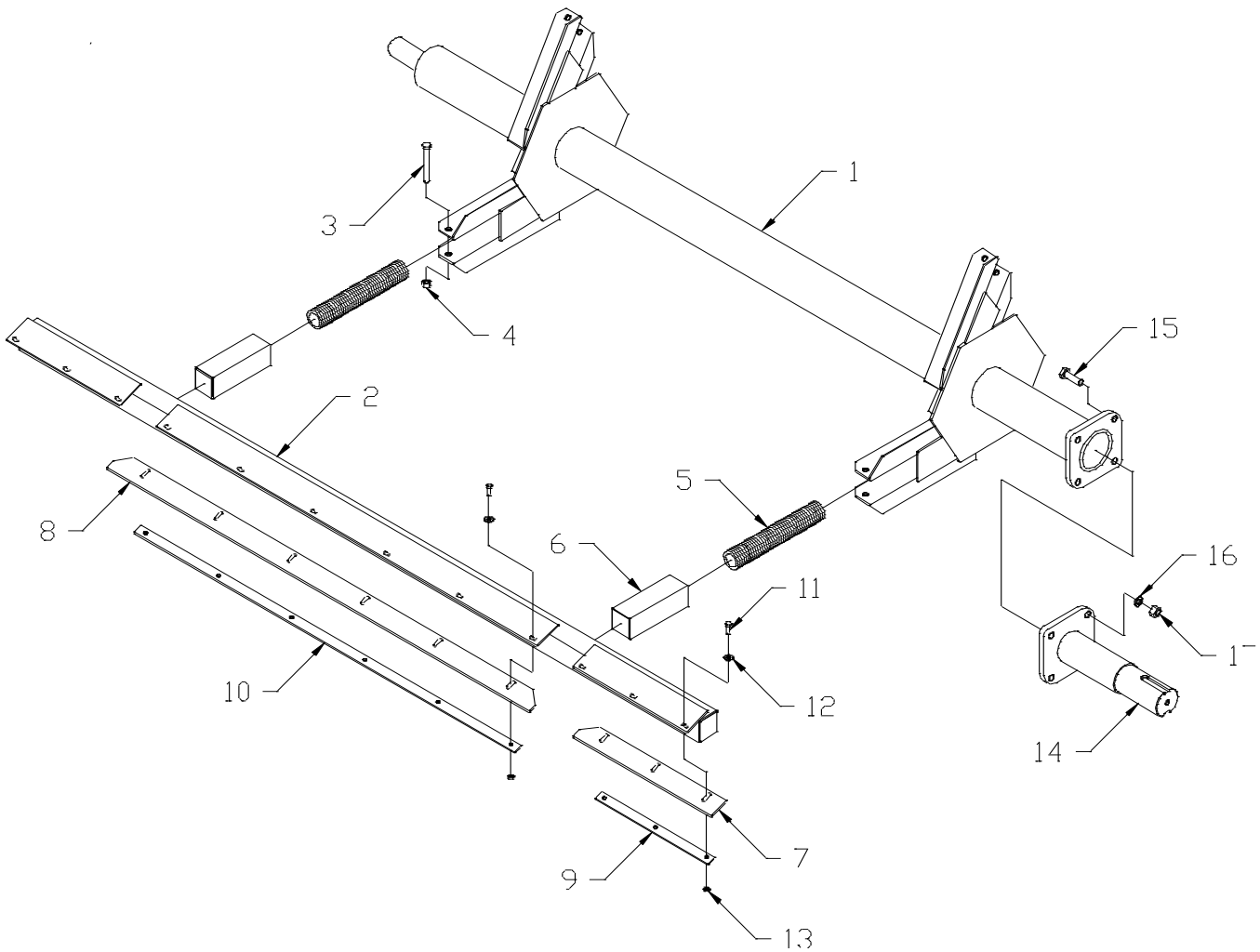
REF #	PART #	DESCRIPTION	QTY.
1	840564	PORTABLE SPOUT WA	1
2	140685	SPOUT HINGE ROD	1
3	840527	SPOUT HINGE BRACKET WA	2
4	407021	CARRIAGE BOLT, 5/16"-18 x 1"	4
5	402005	SPLIT LOCKWASHER, 5/16"	4
6	400205	HEX NUT, 5/16"-18	4

DOOR FRAME MAGNET ASSEMBLY



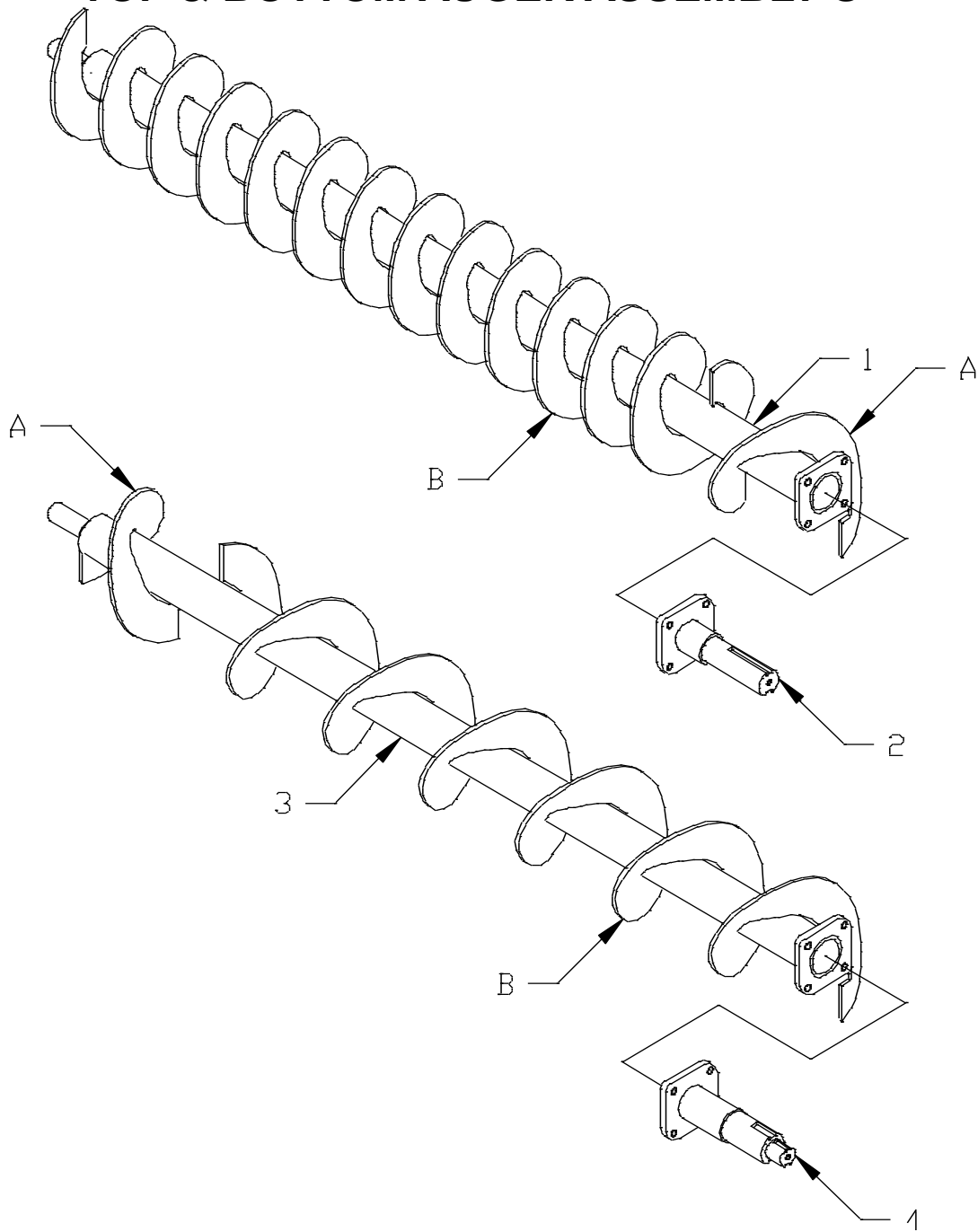
REF #	PART #	DESCRIPTION	QTY.
1	375005	MAGNET, AM 220 ARCO PLATE	1
2	407021	CARRIAGE BOLT, 5/16"-18 x 1"	8
3	402005	SPLIT LOCKWASHER, 5/16"	8
4	400205	HEX NUT, 5/16"-18	8

3 ARM ROTOR ASSEMBLY



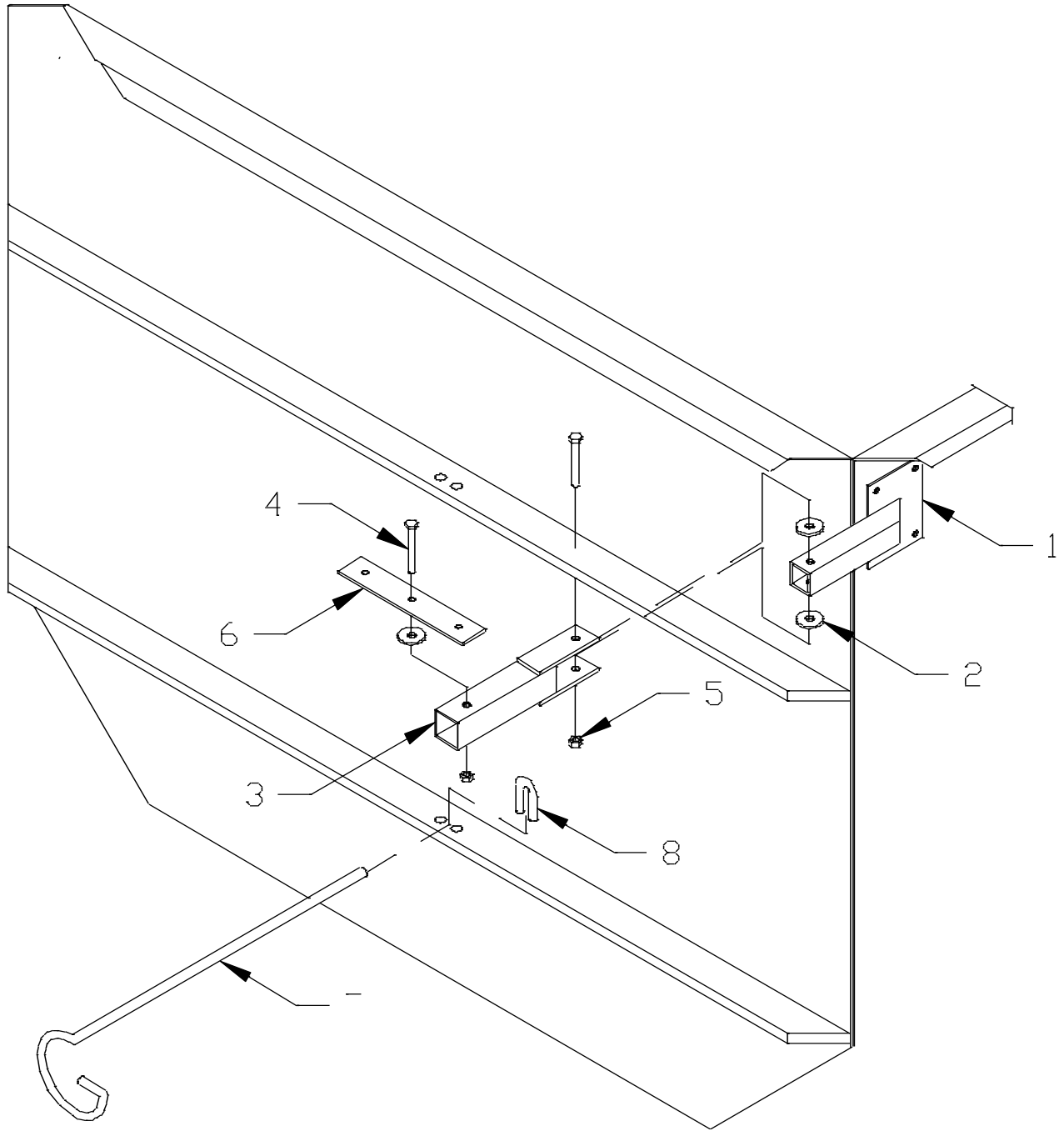
REF #	PART #	DESCRIPTION	QTY.
1	840541	84-8 ROTOR WELD ASSEMBLY (3-ARM)	1
2	840542	WIPER TUBE WELD ASSEMBLY	3
3	405713	HHCS, 1/2"-13 x 4"	6
4	400908	HEX CENTER LOCKNUT, 1/2"-13	6
5	410021	COMPRESSION SPRING, 2" OD x 12" x .283"	6
6	840538	ROTOR SPRING BOX WEL ASSEMBLY	6
7	140648	END PLASTIC WIPER	6
8	140649	CENTER PLASTIC WIPER	3
9	140650	END WIPER STRAP	6
10	140651	CENTER WIPER STRAP	3
11	405628	HHCS, 5/16"-18 x 1"	36
12	402405	FLATWASHER, 5/16"	36
13	401105	NYLOCK HEX NUT, 5/16"-18	36
14	840536	ROTOR DRIVE SHAFT WELD ASSEMBLY	1
15	405754	HHCS, 5/8"-11 x 2"	4
16	402010	SPLIT LOCKWASHER, 5/8"	4
17	400210	HEX NUT, 5/8"-11	4

TOP & BOTTOM AUGER ASSEMBLY'S



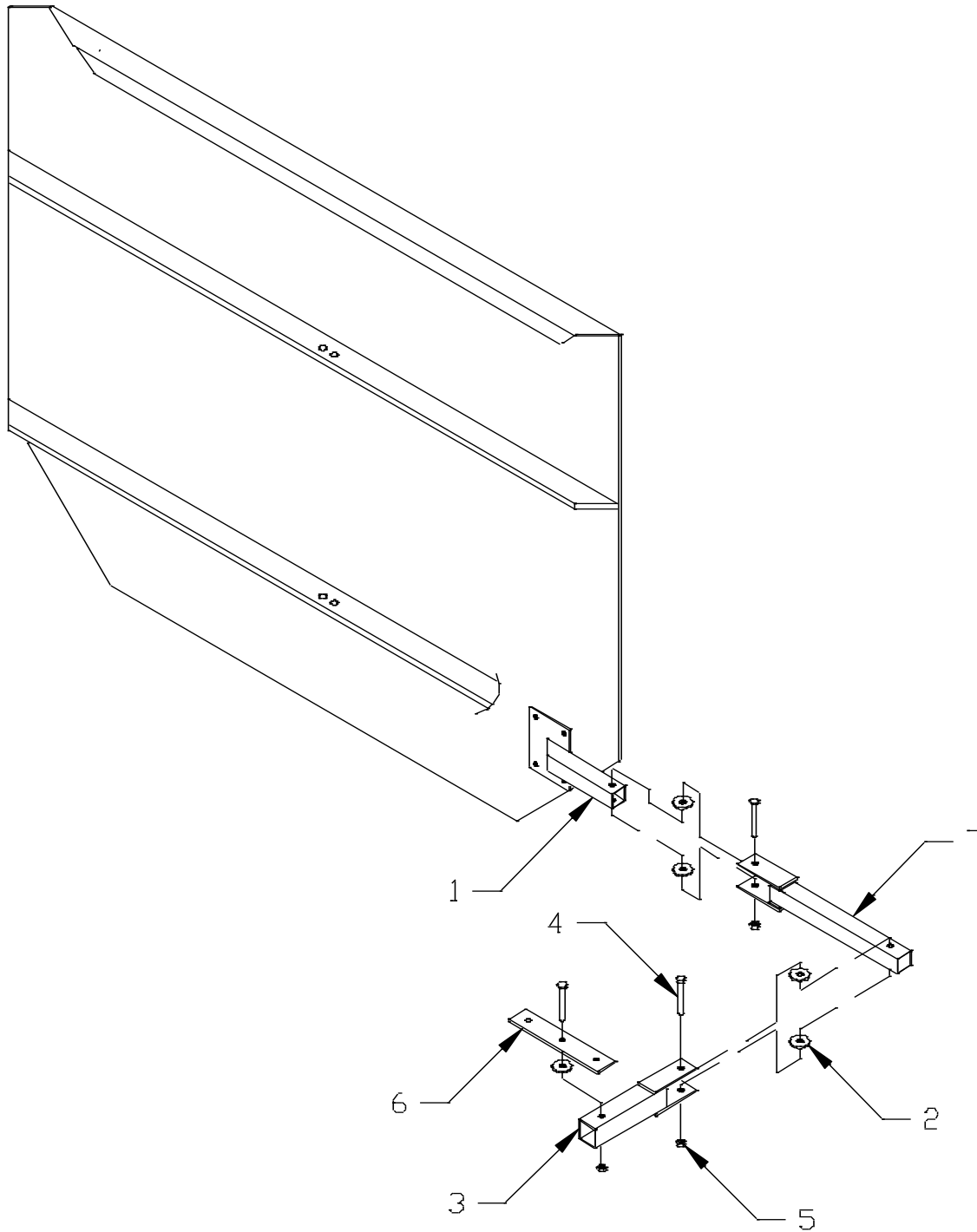
REF #	PART #	DESCRIPTION	QTY.
1	840555	TOP AUGER WELDMENT 84-8	1
A.	381205	HELICOID FLIGHT, 12"OD x 4-1/2"ID x 13/32" 12" P LH	12"
B.	381206	HELICOID FLIGHT, 12"OD x 4-1/2"ID x 13/32" 6" P RH	76"
2	840534	TOP AUGER DRIVE SHAFT WA 84-8	1
3	840554	BOTTOM AUGER WA 84-8	1
A.	381204	HELICOID FLIGHT, 12"OD x 4-1/2"ID x 13/32" 12" P RH	12"
B.	381205	HELICOID FLIGHT, 12"OD x 4-1/2"ID x 13/32" 12" P LH	77"
4	840535	BOTTOM AUGER DRIVE SHAFT WA 84-8	2

TRAILER & STATIONARY SCALE INDICATOR ASSEMBLY



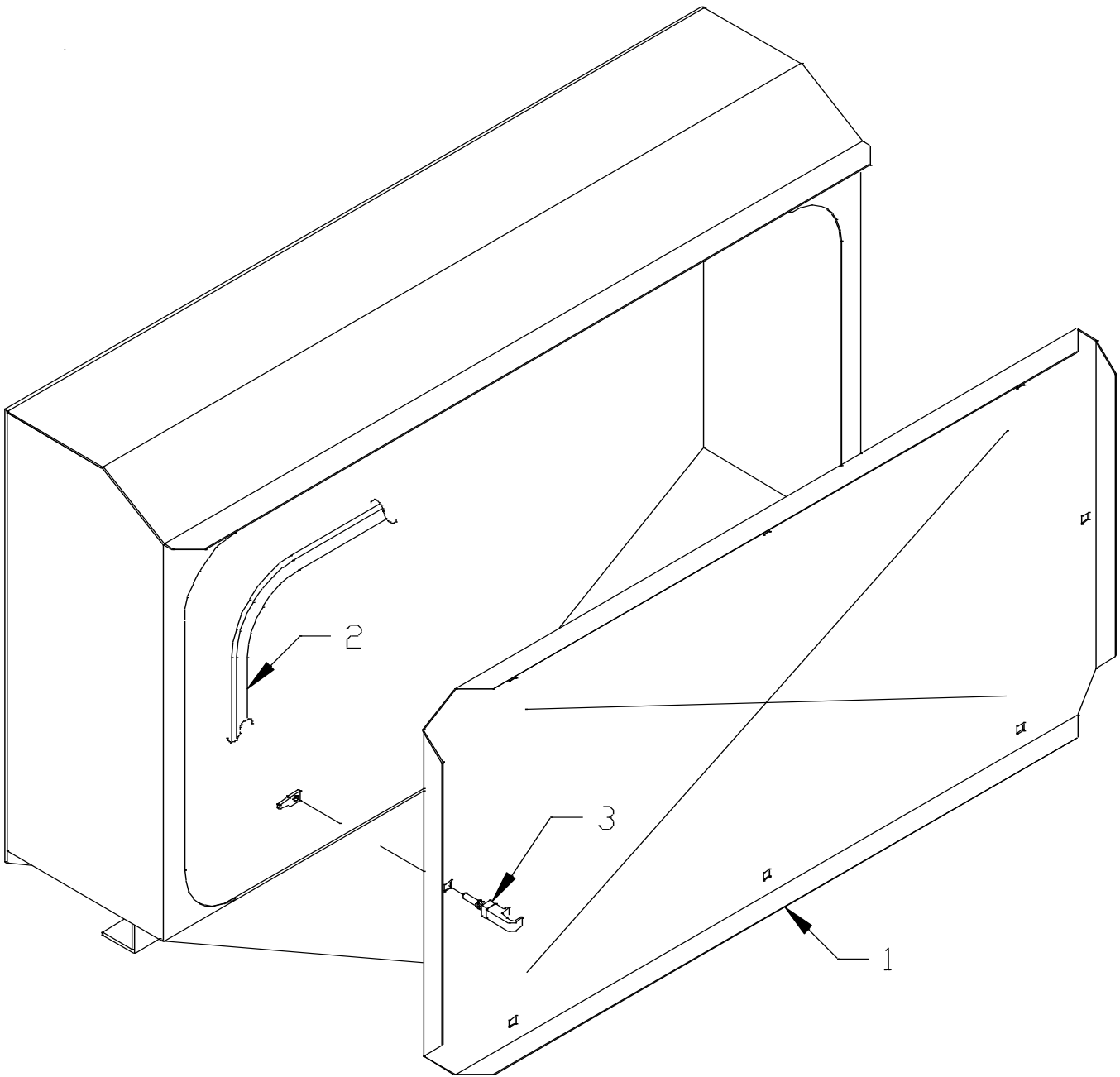
REF #	PART #	DESCRIPTION	QTY.
1	840047	SCALE INDICATOR PLATE WA	1
2	140957	SCALE HINGE WASHER	3
3	840560	SCALE INDICATOR ARM WA	1
4	405634	HHCS, 5/16"-18 x 2-1/2"	2
5	401105	HEX NUT, 5/16"-18, NYLOCK	2
6	140711	SCALE INDICATOR BOLT PLATE	1
7	184283	HOSE CARRIER, TRAILER	1
8	412205	CABLE CLAMP, 3/8"	1

PORTABLE SCALE INDICATOR ASSEMBLY



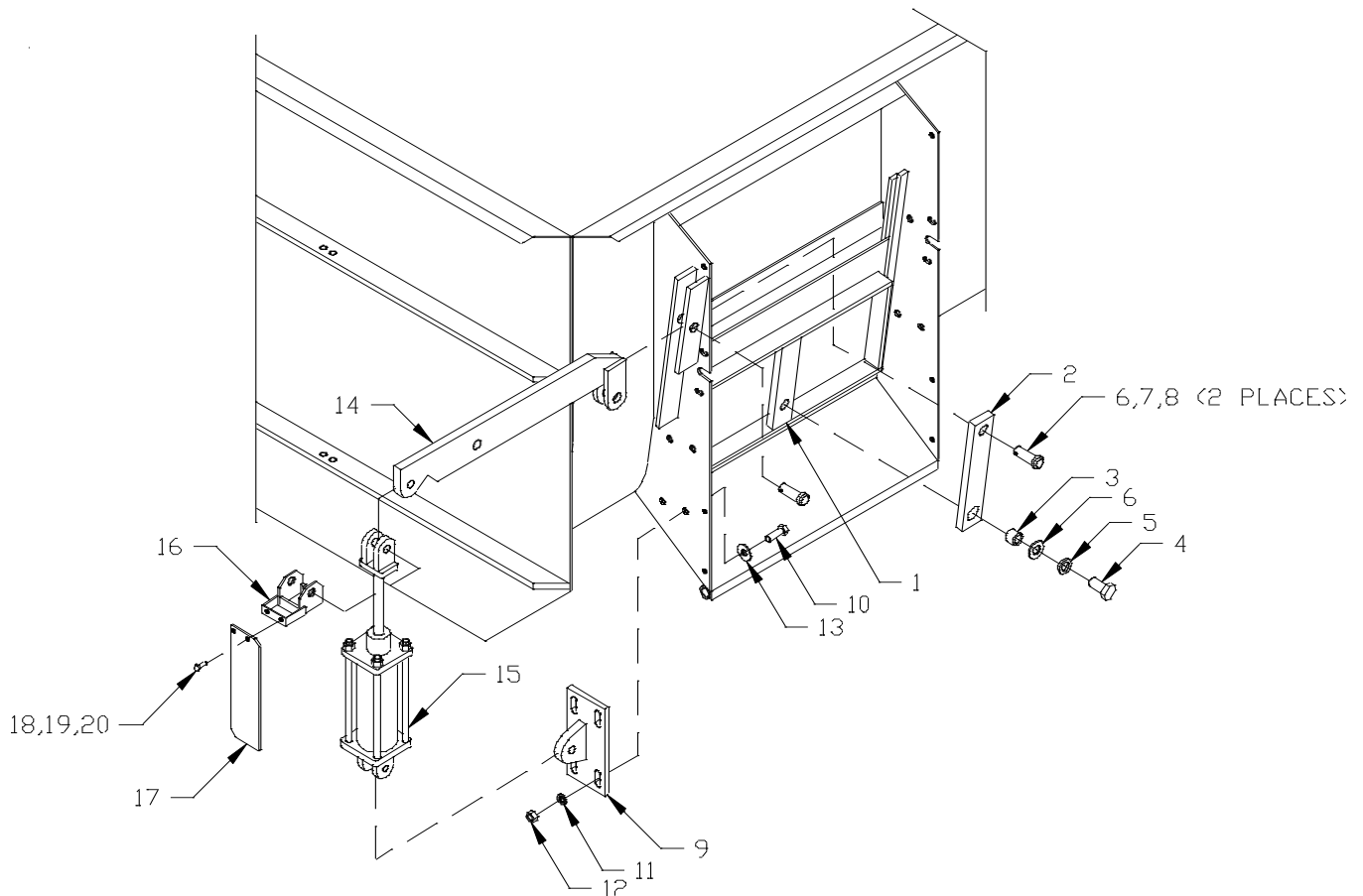
REF #	PART #	DESCRIPTION	QTY.
1	840047	SCALE INDICATOR PLATE WA	1
2	140957	SCALE HINGE WASHER	5
3	840560	SCALE INDICATOR ARM WA	1
4	405634	HHCS, 5/16"-18 x 2-1/2"	3
5	401105	HEX NUT, 5/16"-18, NYLOCK	3
6	140711	SCALE INDICATOR BOLT PLATE	1
7	840576	SCALE INDICATOR ARM WA x 14"	1

OIL BATH DOOR ASSEMBLY



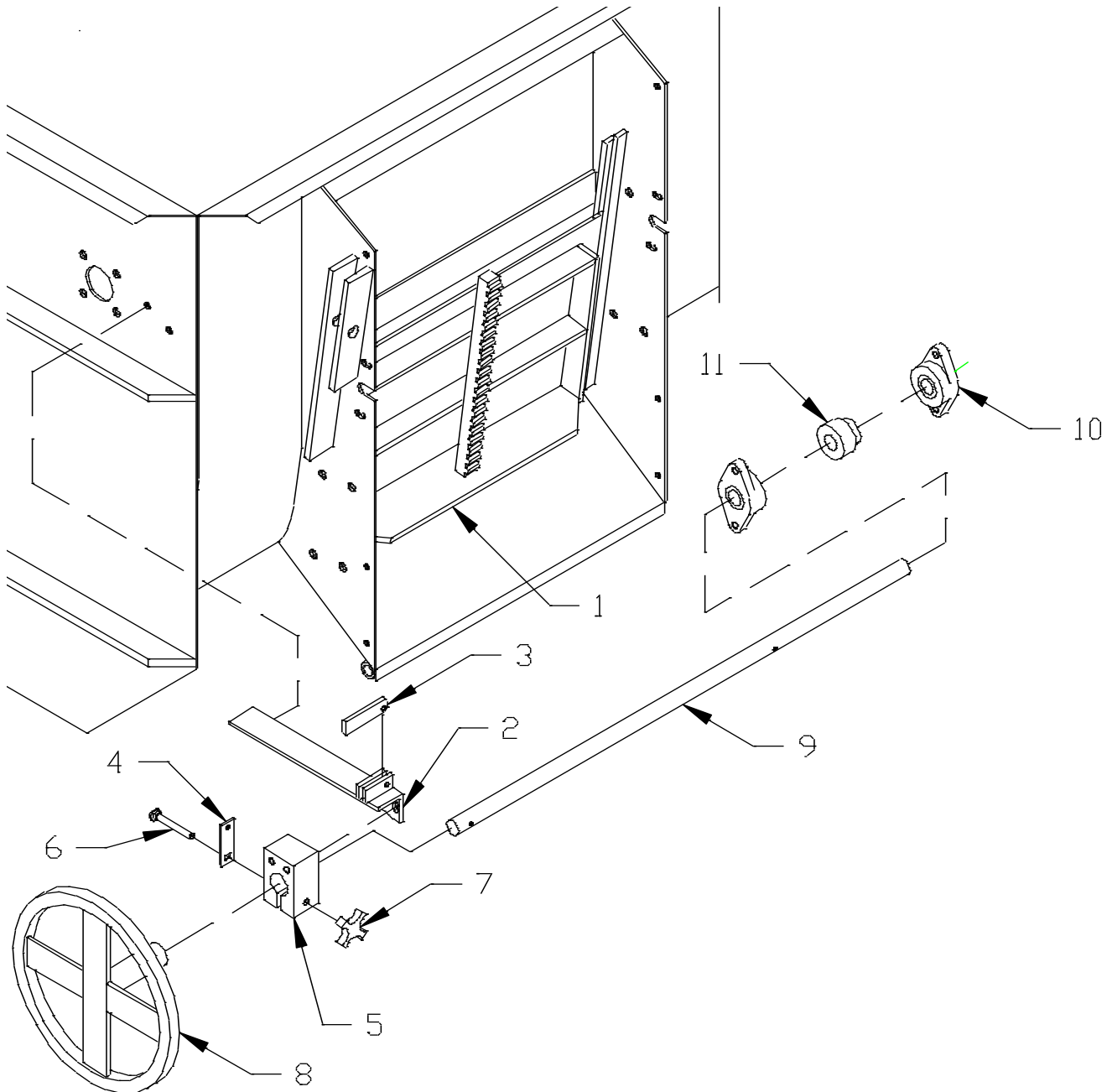
REF #	PART #	DESCRIPTION	QTY.
1	740506	84-8 OIL BATH DOOR ASSEMBLY	1
2	351056	RUBBER BULB SEAL, 5/32"	2.5 FT
3	410300	SOUTHCO CLAMP	8

TRAILER DISCHARGE DOOR ASSEMBLY



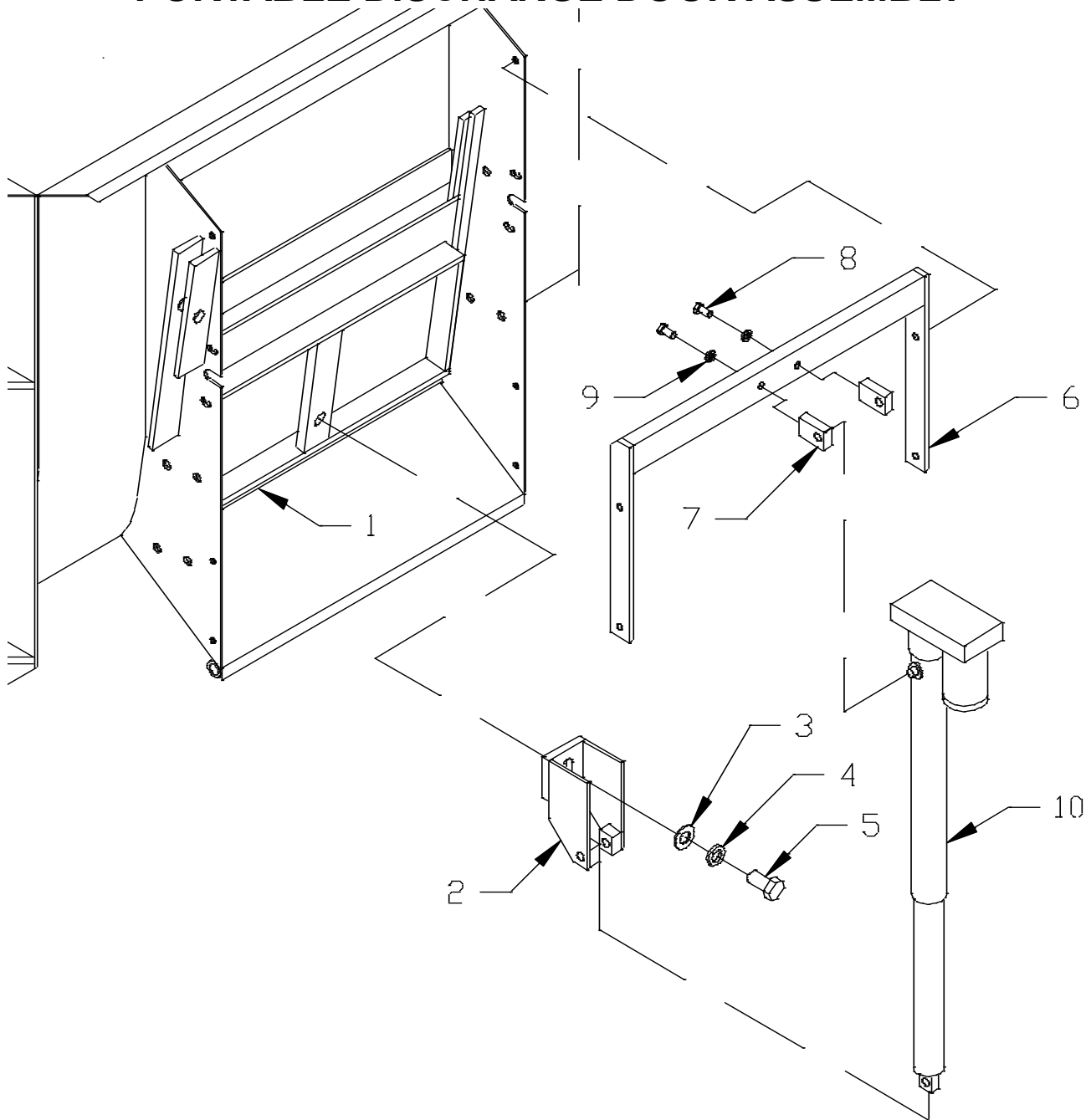
REF #	PART #	DESCRIPTION	QTY.
1	840526	DISCHARGE DOOR PLATE WA 84-8	1
2	140606	DOOR ARM CENTER LEVER	1
3	140629	DOOR ARM BUSHING	1
4	405777	HHCS, 3/4"-10 x 1-1/2"	1
5	402012	SPLIT LOCKWASHER 3/4"	1
6	402512	FLAT WASHER SAE, 3/4"	3
7	405350	CLEVIS PIN, 3/4" x 2"	2
8	404003	COTTER PIN, 5/32" x 1-1/4"	2
9	840532	DOOR CYLINDER LUG WA	1
10	405703	HHCS, 1/2"-13 x 1-1/2"	4
11	402008	SPLIT LOCKWASHER, 1/2"	4
12	400208	HEX NUT, 1/2"-13	4
13	402408	FLAT WAHSER, 1/2"	4
14	840528	DOOR LEVER ARM WA	1
15	364033	HYDRAULIC CYLINDER, 1-1/2" x 6"	1
16	840500	DOOR MARKER BRACKET WA	1
17	184259	DOOR CYLINDER MARKER PLATE	1
18	405602	HHCS, 1/4"-20 x 3/4"	2
19	400204	HEX NUT, 1/4"-20	2
20	402004	SPLIT LOCKWASHER, 1/4"	2

STATIONARY DISCHARGE DOOR ASSEMBLY



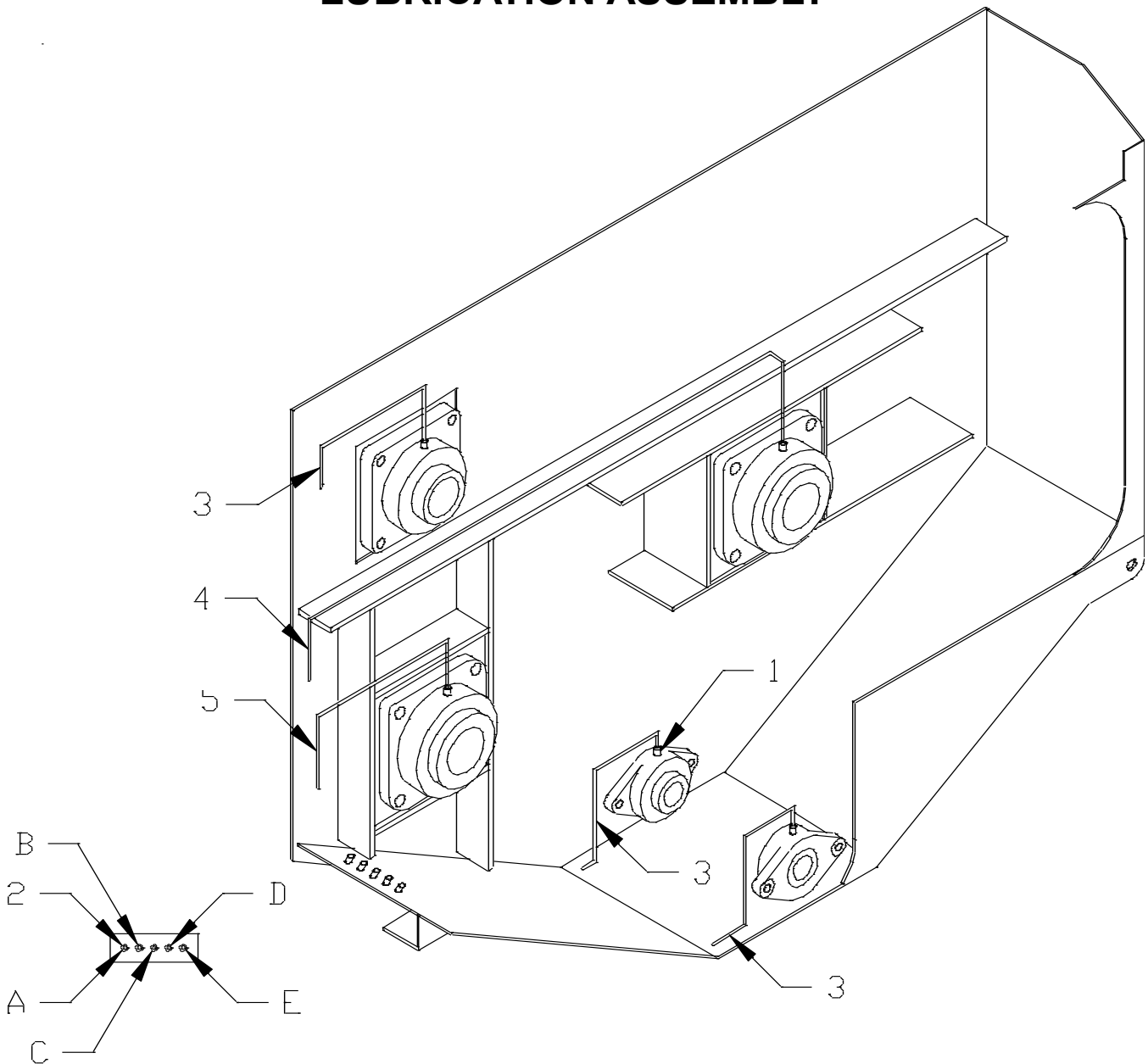
REF #	PART #	DESCRIPTION	QTY.
1	840537	STATIONARY DISCHARGE DOOR WA	1
2	872349	BEARING BRAKE MOUNT WA	1
3	189112	BRAKE ARM	1
4	189106	HAND KNOB BOLT SUPPORT	1
5	189105	BEARING BRAKE BLOCK	1
6	407047	CARRIAGE BOLT, 3/8"-16 x 3"	1
7	410305	HAND KNOB, 3/8"-16	1
8	840563	HAND WHEEL WA	1
9	140683	HAND WHEEL SHAFT	1
10	340215	BEARING, 1" 2-BOLT FLANGE, FX3W216U	2
11	185114	GEAR, S1020 x 1", DRILLED	1

PORTABLE DISCHARGE DOOR ASSEMBLY



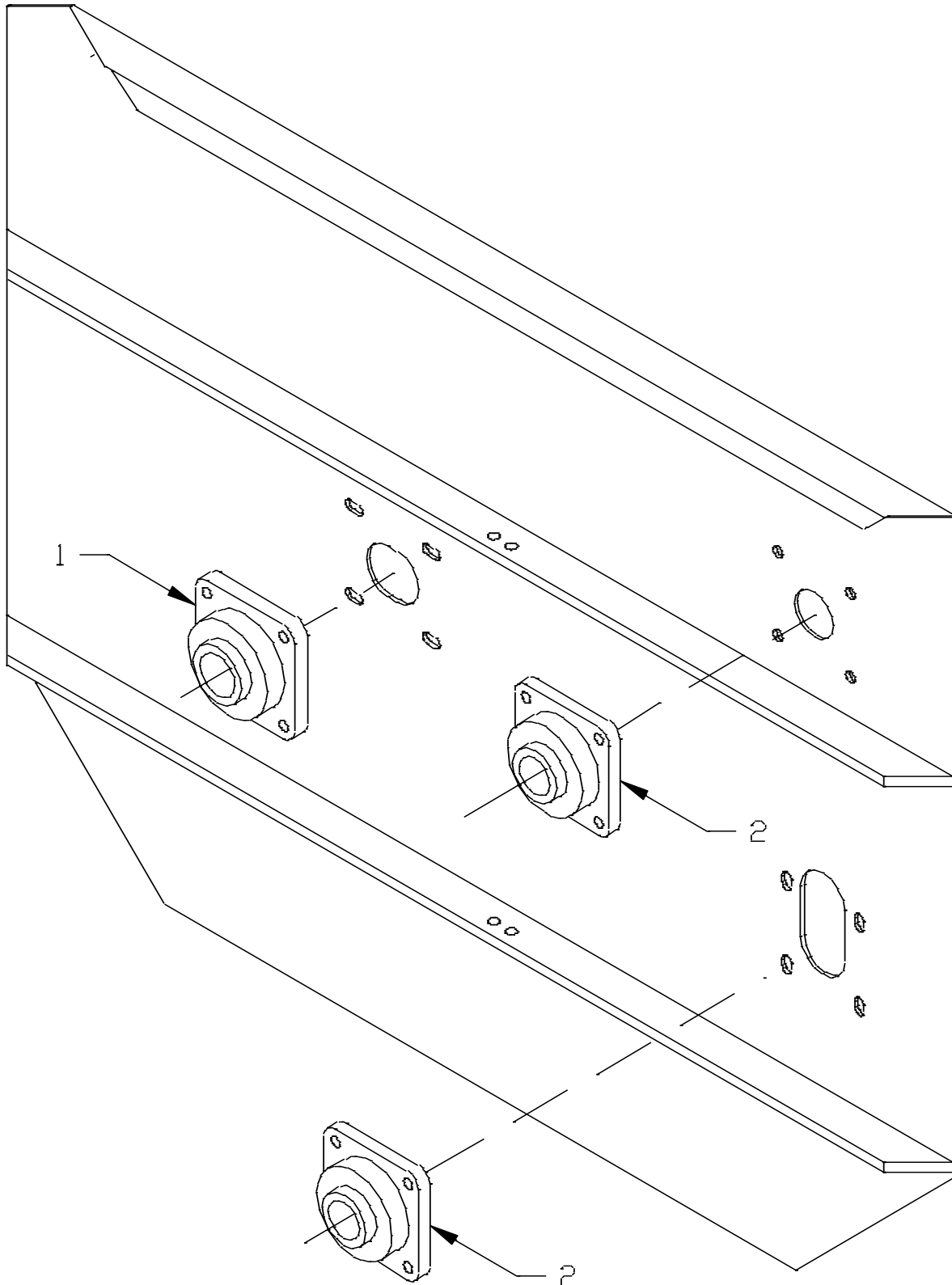
REF #	PART #	DESCRIPTION	QTY.
1	840526	DISCHARGE DOOR PLATE WA	1
2	840571	ELECTRIC DOOR BRACKET WA	1
3	402512	FLAT WASHER, 3/4"	1
4	402012	SPLIT LOCKWASHER, 3/4"	1
5	405777	HHCS, 3/4"-10 x 1-1/2"	1
6	840572	ELECTRIC DOOR MOUNT WA	1
7	140189	ELECTRIC DOOR EAR	2
8	405652	HHCS, 3/8"-16 x 3/4"	2
9	402006	SPLIT LOCKWASHER, 3/8"	2
10	364312	12 VOLT DC ELECTRIC ACTUATOR x 12" STROKE	1

LUBRICATION ASSEMBLY



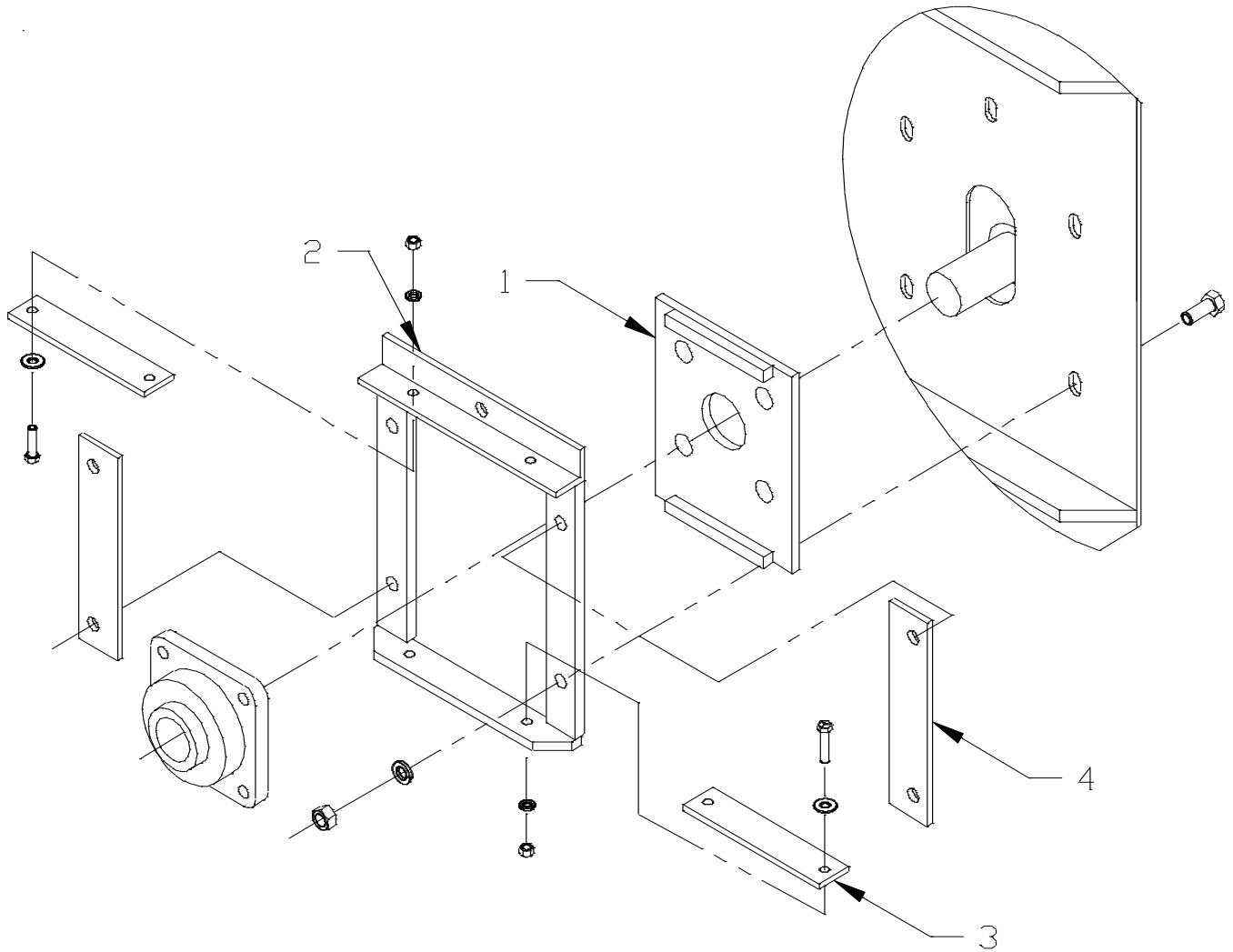
REF #	PART #	DESCRIPTION	QTY.
1	356001	FITTING, 1/8" NPTF x 3/16" COMPRESSION 90°	10
2	310750	GREASE ZERK, 1/8" FPT	5
3	185045	GREASE LINE, 3/16" x 36"	3
A.		REAR INPUT BEARING	
B.		FRONT INPUT BEARING	
E.		TOP AUGER BEARING	
4	185547	GREASE LINE, 3/16" x 60"	1
C.		ROTOR BEARING	
5	189170	GREASE LINE, 3/16" x 26"	1
D.		BOTTOM AUGER BEARING	

84-8 FRONT END ASSEMBLY



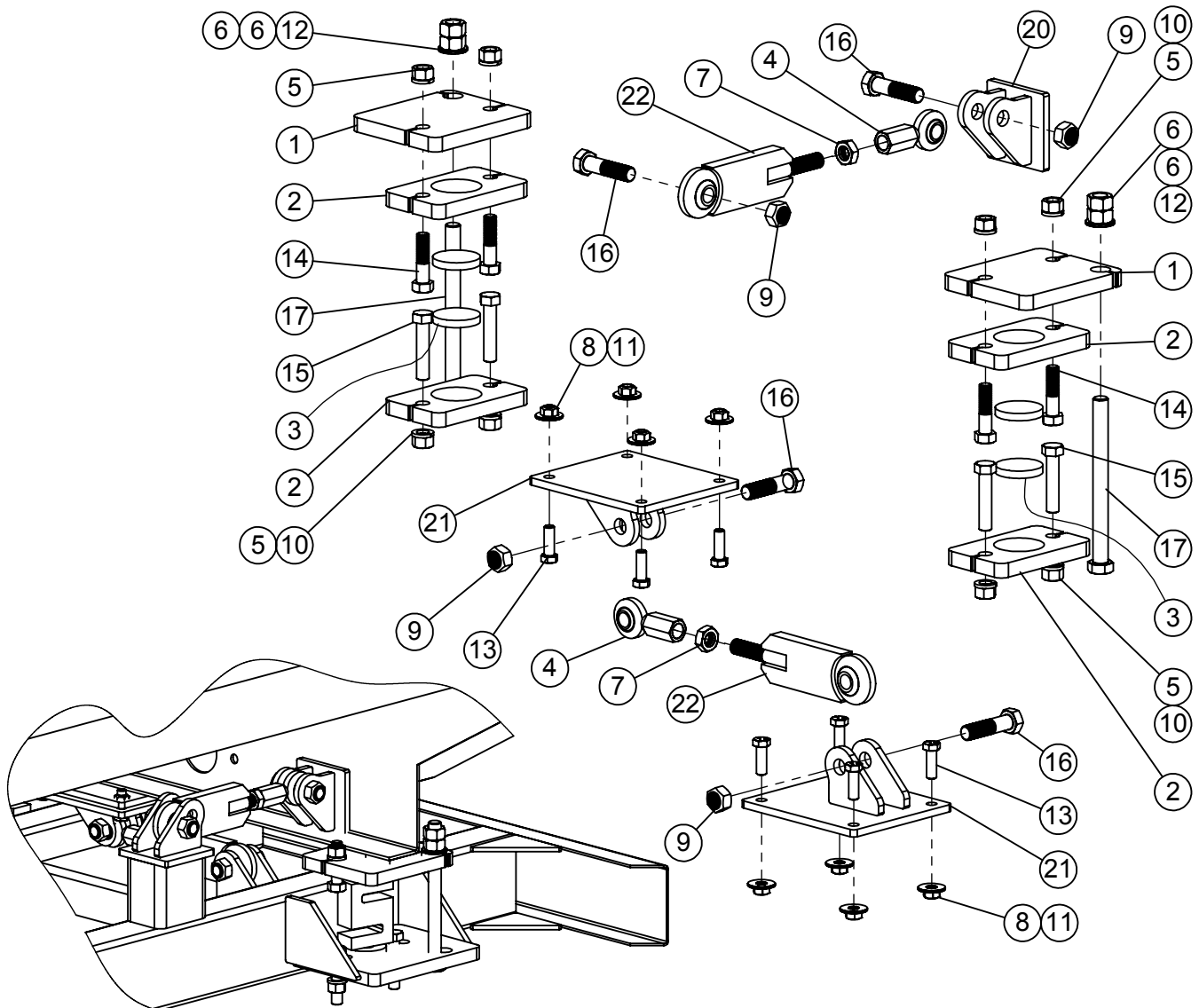
REF #	PART #	DESCRIPTION	QTY.
1	340430	BEARING, 2" 4-BOLT, F3W2E32E	1
2	340427	BEARING, 1-3/4" 4-BOLT, F3W228E	1

84-8 FLOATING AUGER ASSEMBLY



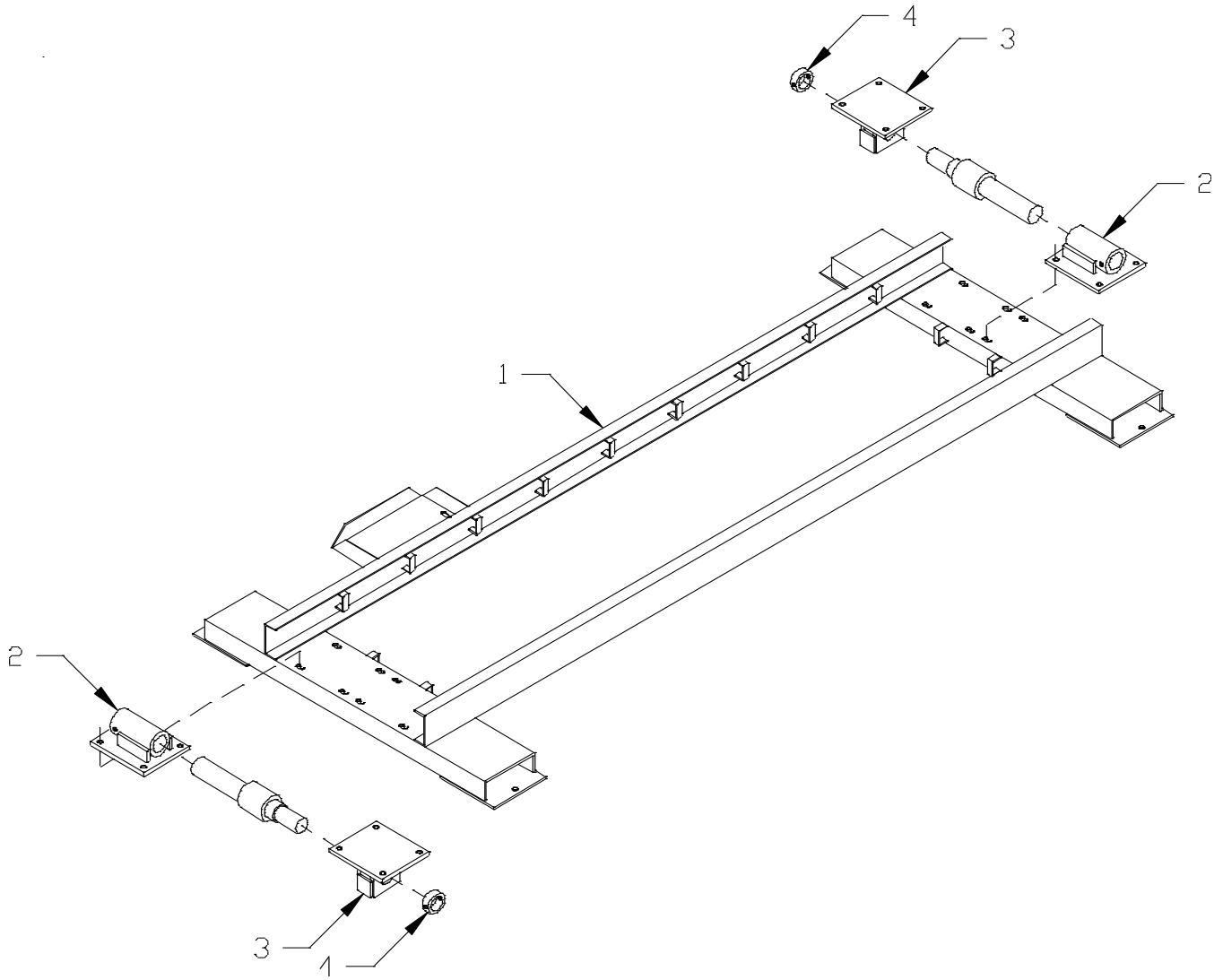
REF #	PART #	DESCRIPTION	QTY.
1	840517	BEATING SLIDER PLATE WA, 1-3/4"	1
2	840516	BEARING SLIDER FRAME WA	1
3	140555	BEARING SLIDER PLASTIC	2
4	140551	SLIDE BAR	2

84-8 LOAD CELL SCALE KIT



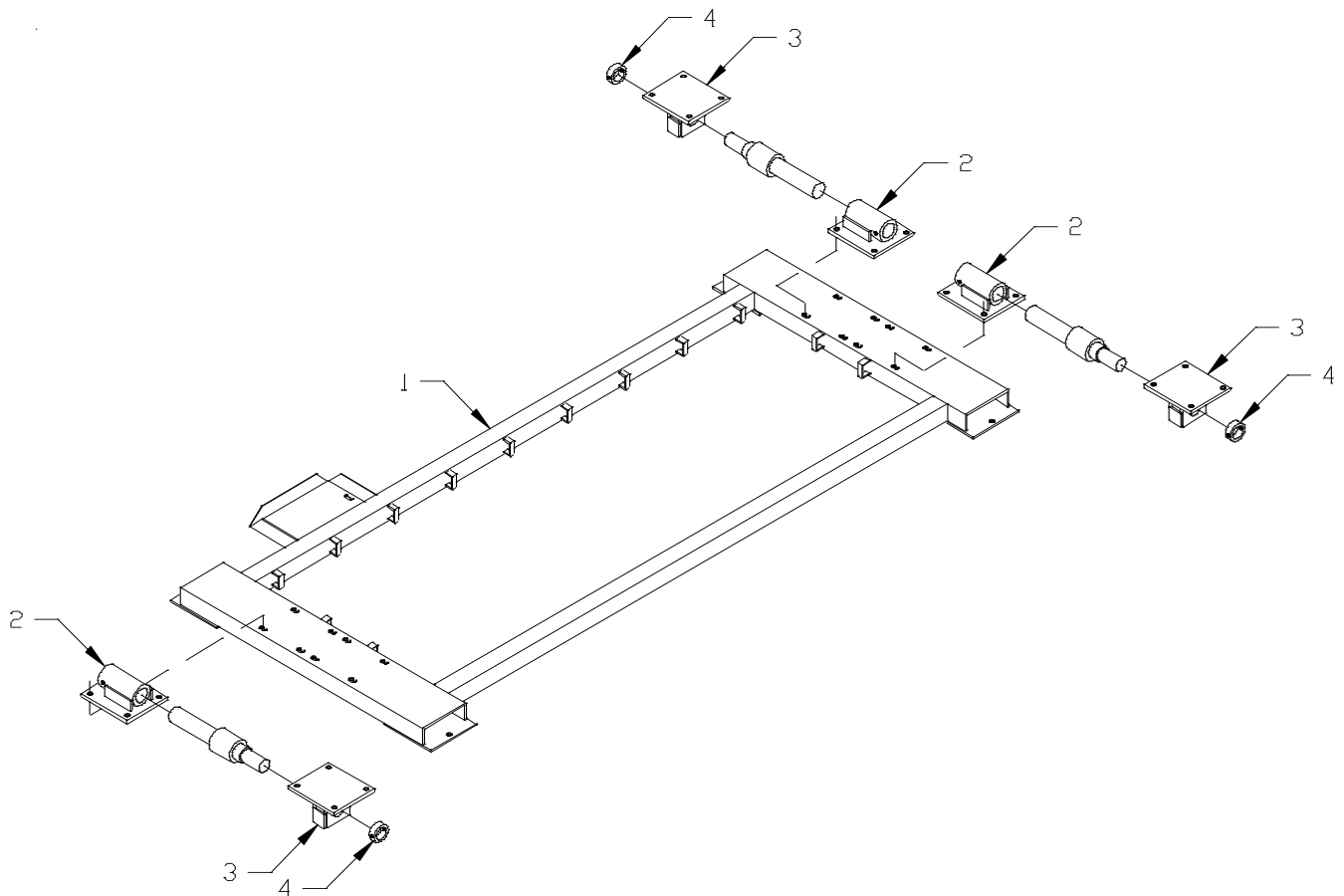
ITEM #	PART #	DESCRIPTION	QTY.
1	182881	SCALE MOUNT MIXER PLATE	4
2	182915	LOAD CELL CAGE PLATE	8
3	185997	SCALE PAD	8
4	192019P	SPOUT CYLINDER ROD END (DANUSER)	4
5	400210	HEX NUT 5/8"-11 #5 PLTD	16
6	400212	HEX NUT 3/4"-10 #5 PLTD	8
7	400712	HEX JAM NUT 3/4"-16	4
8	400908	HEX CROWN LOCNUT 1/2"-13 #9	16
9	400912	HEX CROWN LOCK NUT 3/4"-10 #5 PLTD	8
10	402010	SPRING LOCK WASHER 5/8" PLTD	16
11	402408	WASHER, FLAT 1/2" MED PLTD	16
12	402512	FLAT WASHER 3/4" SAE	4
13	405703	HHCS 1/2"-13 x 1-1/2" #5 PLTD	16
14	405756	HHCS, 5/8"-11 x 2-1/2" #5 PLTD	8
15	405758	HHCS 5/8"-11 x 3" #5 PLTD	8
16	405783	HHCS 3/4"-10 x 3" #5 PLTD	8
17	405798	HHCS #5 PLTD 3/4"-10 x 8-1/2"	4
18	450958	J-BOX W/ SUMMING CARD, INCELL	1
19	455412	GROUND STRAP x 12"	1
20	870493	CHECK ROD END BRACKET WA	2
21	870494	CHECK ROD END BRACKET WA 84-8	4
22	870495	CHECK ROD, 0-1/21" ADJ. W.A.	4

PORTABLE & STATIONARY 2-POINT SCALE FRAME



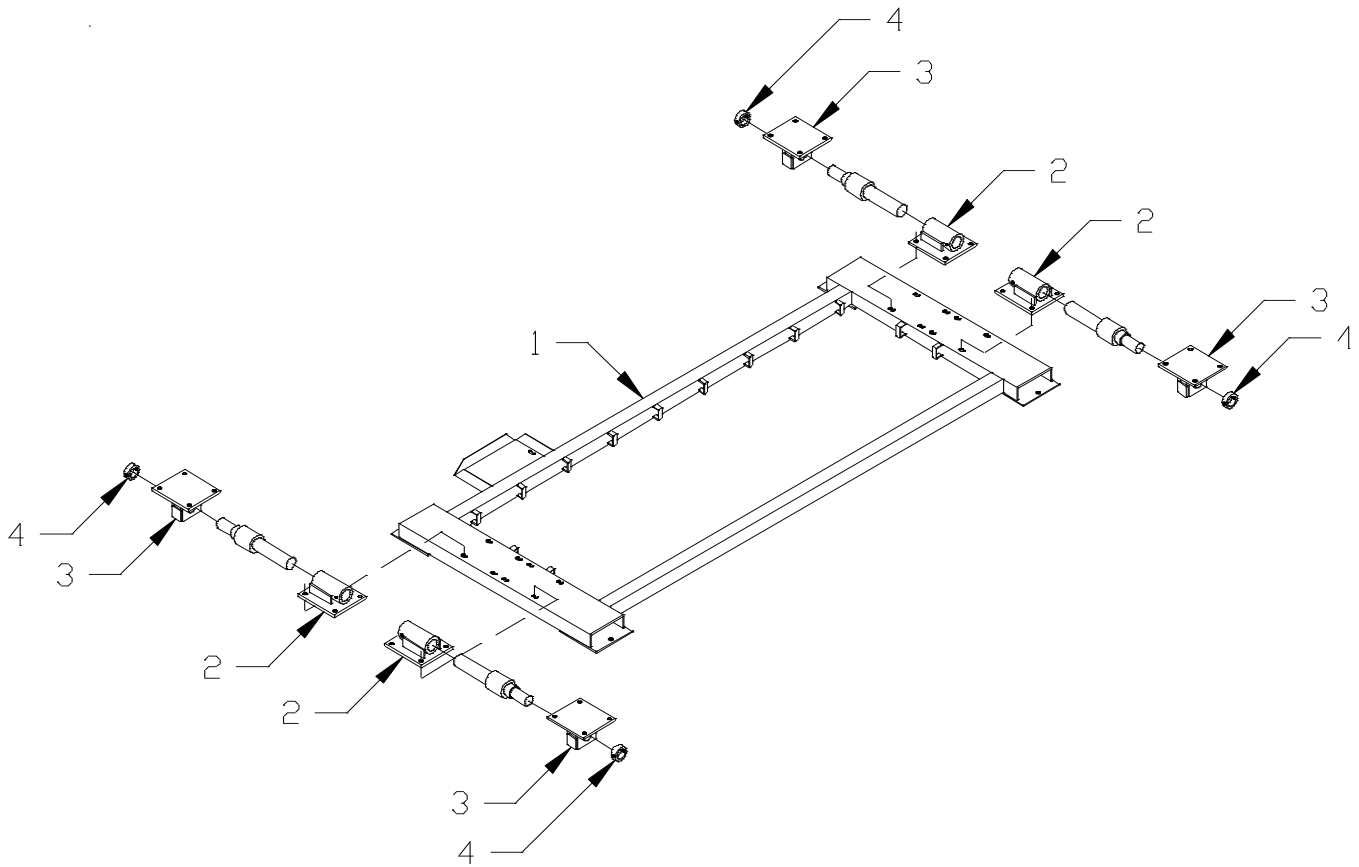
REF #	PART #	DESCRIPTION	QTY.
1	840501	STATIONARY SCALE FRAME WA	1
2	840502	WEIGH BAR MOUNT WA 2-1/8"	2
3	840503	WEIGH BAR BRACKET WA	2
4	140718	WEIGH BAR SLEEVE	2

PORTABLE & STATIONARY 3-POINT SCALE FRAME



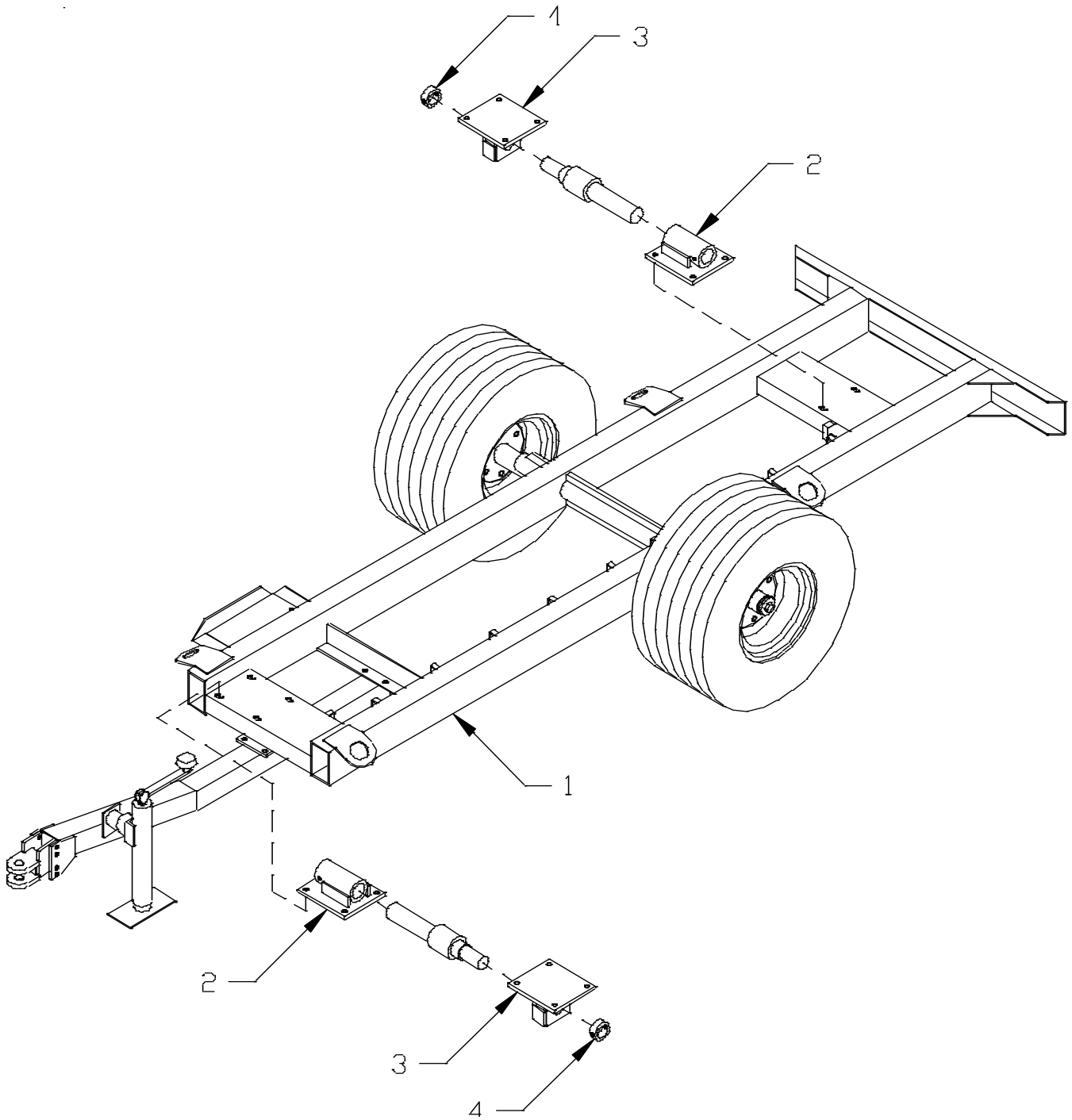
REF #	PART #	DESCRIPTION	QTY.
1	840013	STATIONARY SCALE FRAME WA (3 & 4-POINT)	1
2	840502	WEIGH BAR MOUNT WA	3
3	840503	WEIGH BAR BRACKET WA	3
4	140718	WEIGH BAR SLEEVE	3

PORTABLE & STATIONARY 4-POINT SCALE FRAME



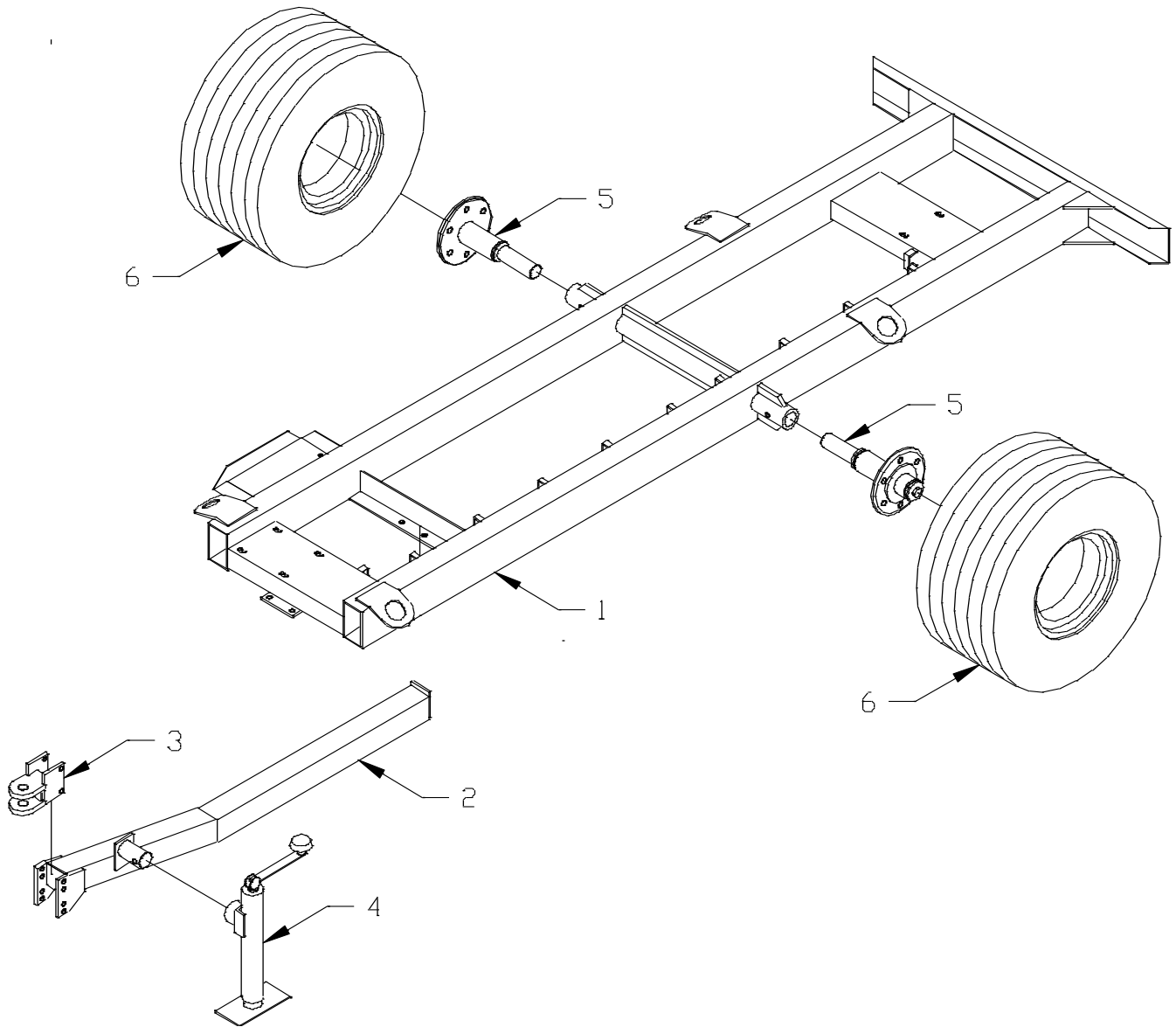
REF #	PART #	DESCRIPTION	QTY.
1	840013	STATIONARY SCALE FRAME WA (3 & 4-POINT)	1
2	840502	WEIGH BAR MOUNT WA	4
3	840503	WEIGH BAR BRACKET WA	4
4	140718	WEIGH BAR SLEEVE	4

TRAILER 2-POINT WEIGH BAR ASSEMBLY



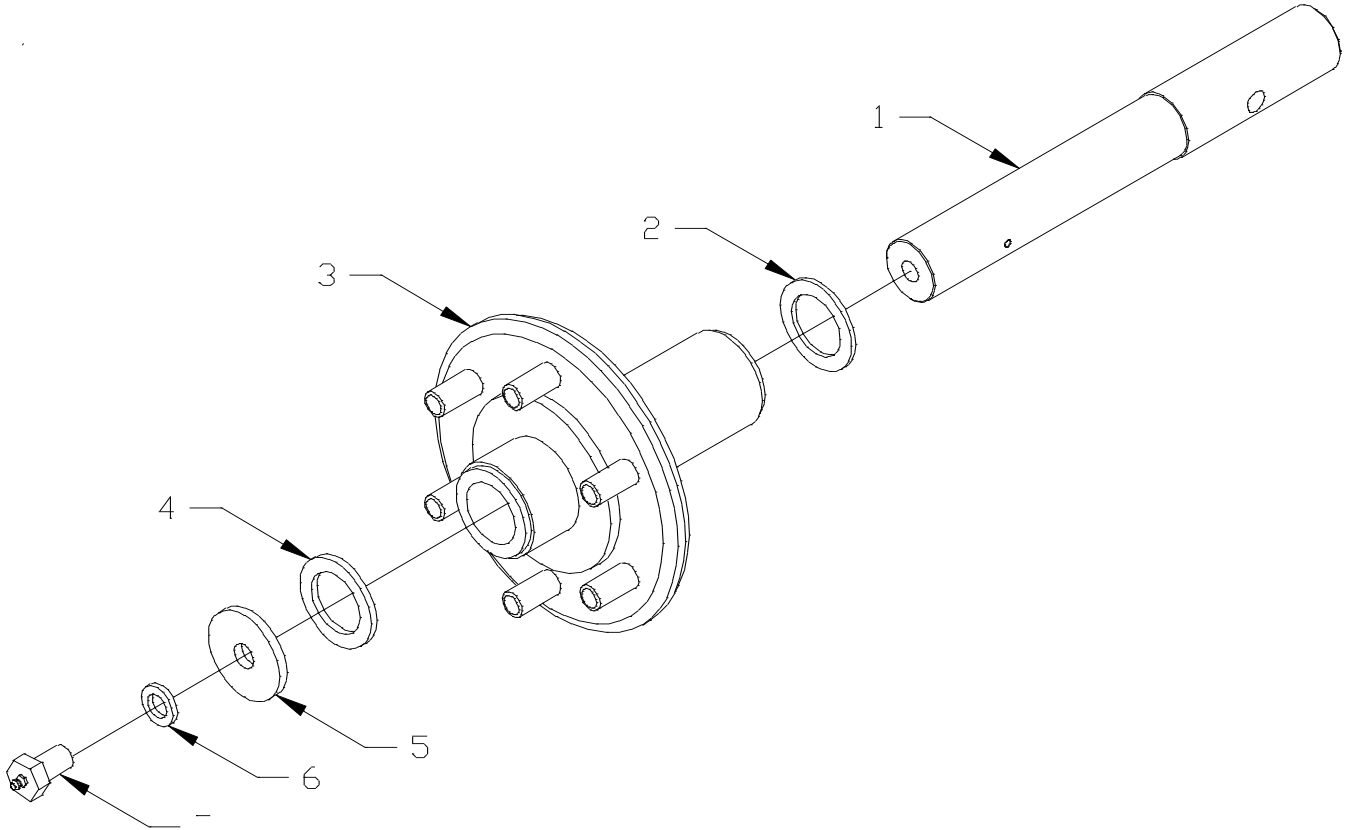
REF #	PART #	DESCRIPTION	QTY.
1	640100	84-8 TRAILER BUNDLE	1
2	840502	WEIGH BAR MOUNT WA 2-1/8"	2
3	840503	WEIGH BAR BRACKET WA	2
4	140718	WEIGH BAR SLEEVE	2

TRAILER ASSEMBLY



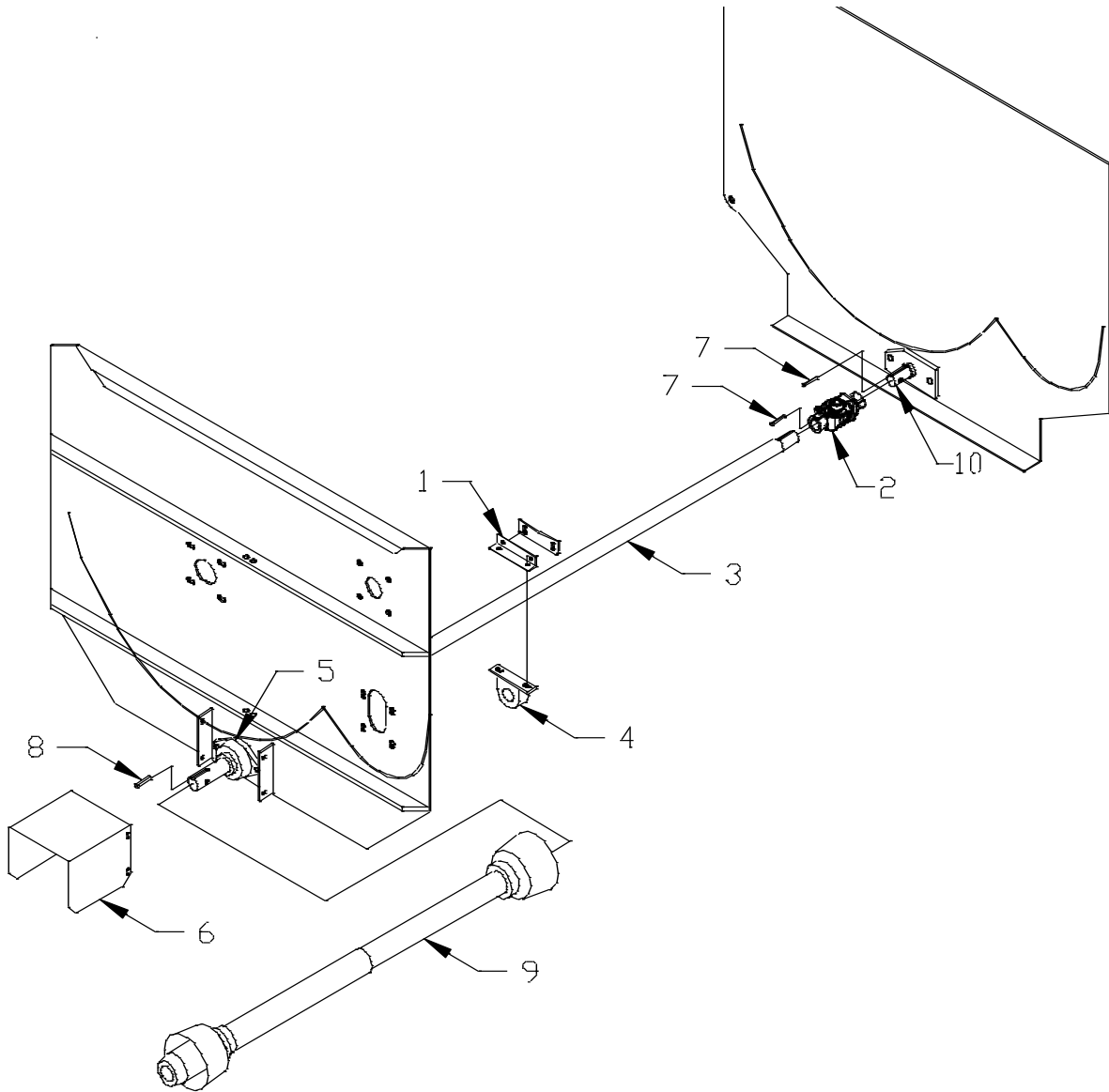
REF #	PART #	DESCRIPTION	QTY.
1	840505	84-8 TRAILER WA	1
2	840506	TRAILER TONGUE WA	1
3	840507	TRAILER CLEVIS WA	1
4	374004	JACK, 2000 LB	1
5	740500	TRAILER HUB & SPINDLE ASSEMBLY	2
6	740902	TIRE & WHEEL ASSEMBLY, 12" x 10-1/2" 6 PLY	2

TRAILER HUB & SPINDLE ASSEMBLY



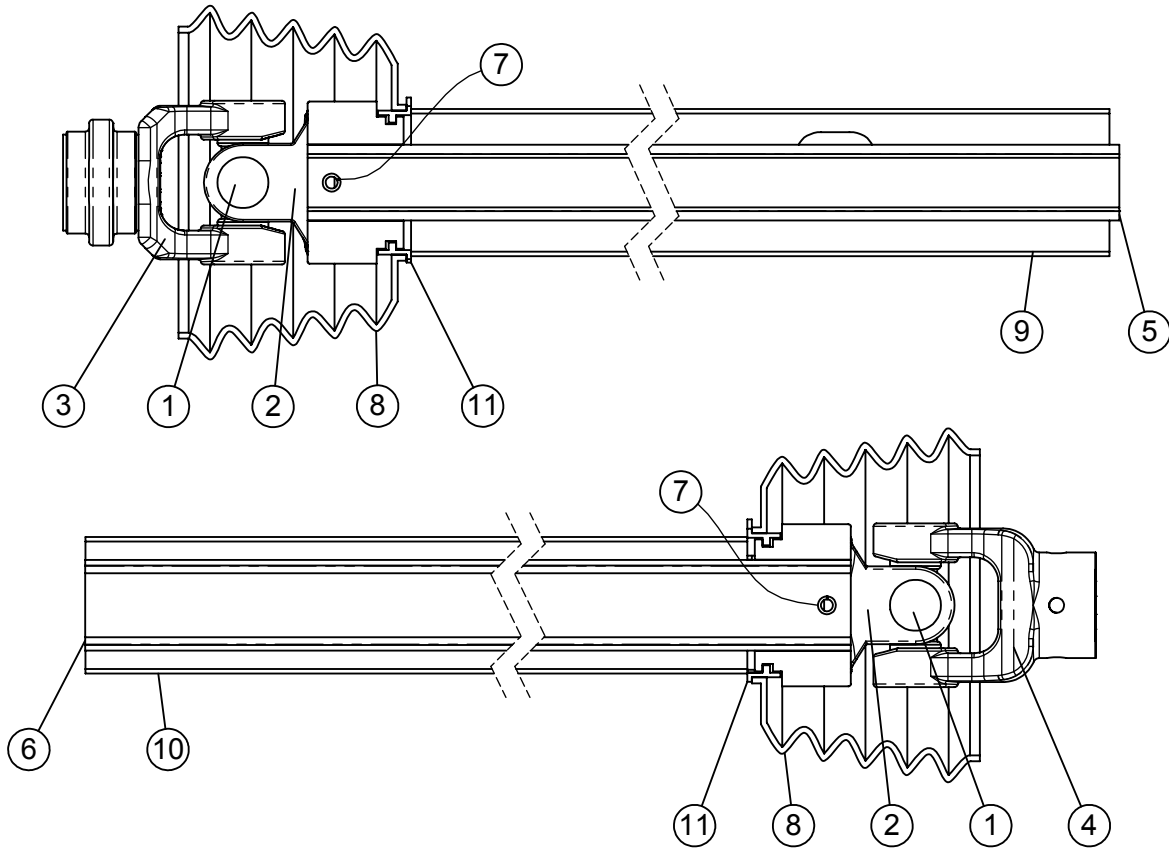
REF #	PART #	DESCRIPTION	QTY.
1	140531	SPINDLE	1
2	402906	MACHINE BUSHING, 10GA	1
3	840530	WHEEL HUB WA 84-8	1
4	402725	MACHINE BUSHING, 3/16"	1
5	140125	SPINDLE END CAP	1
6	402010	SPLIT LOCKWASHER, 5/8"	1
7	140127	SPINDLE BOLT	1

TRAILER DRIVELINE ASSEMBLY



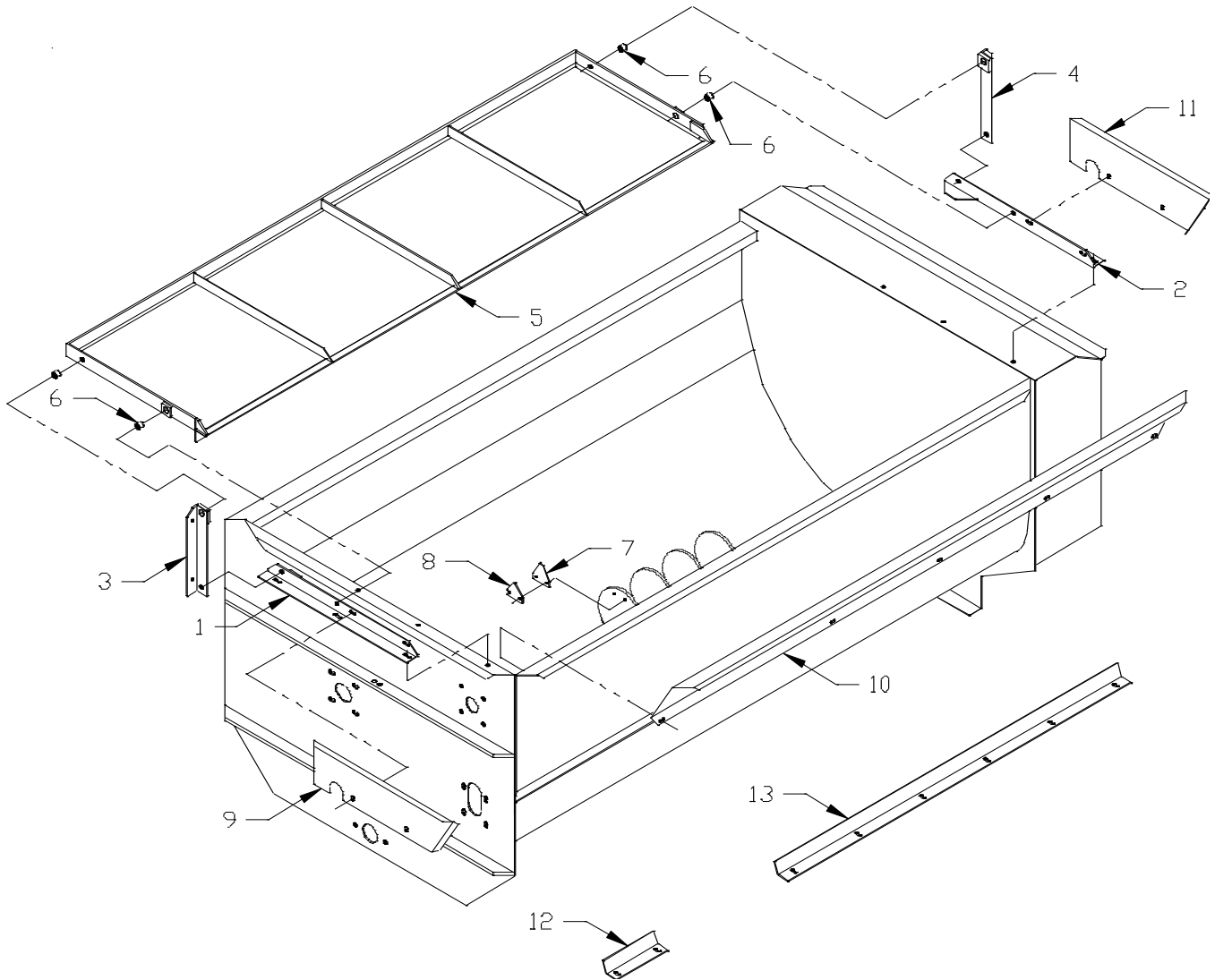
REF #	PART #	DESCRIPTION	QTY.
1	140516	BEARING BRACKET ANGLE	1
2	338230	U-JOINT 1-1/2" x 1-1/2" W2300 (Replaces #332705 Shear Clutch)	1
3	140622	FRONT PTO SHAFT 97-5/8" (Before Serial #810118547)	1
	140744	FRONT PTO SHAFT 98-5/8" (After Serial #810118547)	1
4	341024	PACO BEARING 1-1/2"	1
5	340224	BEARING, 1-1/2" 2-BOLT FLANGE VCJT	1
6	780601	PTO SHIELD ASSEMBLY	1
7	140923	1/4" SQUARE KEY x 1-7/8"	2
8	185480	3/8" SQUARE KEY x 2"	1
9	338025	DRIVE SHAFT W2300-390619	1
10	140623	INPUT SHAFT 18-7/8" (Before Serial #810118547)	1
	140745	INPUT SHAFT 18-7/8" (After Serial #810118547)	1

84-8 TRAILER DRIVE SHAFT #338025



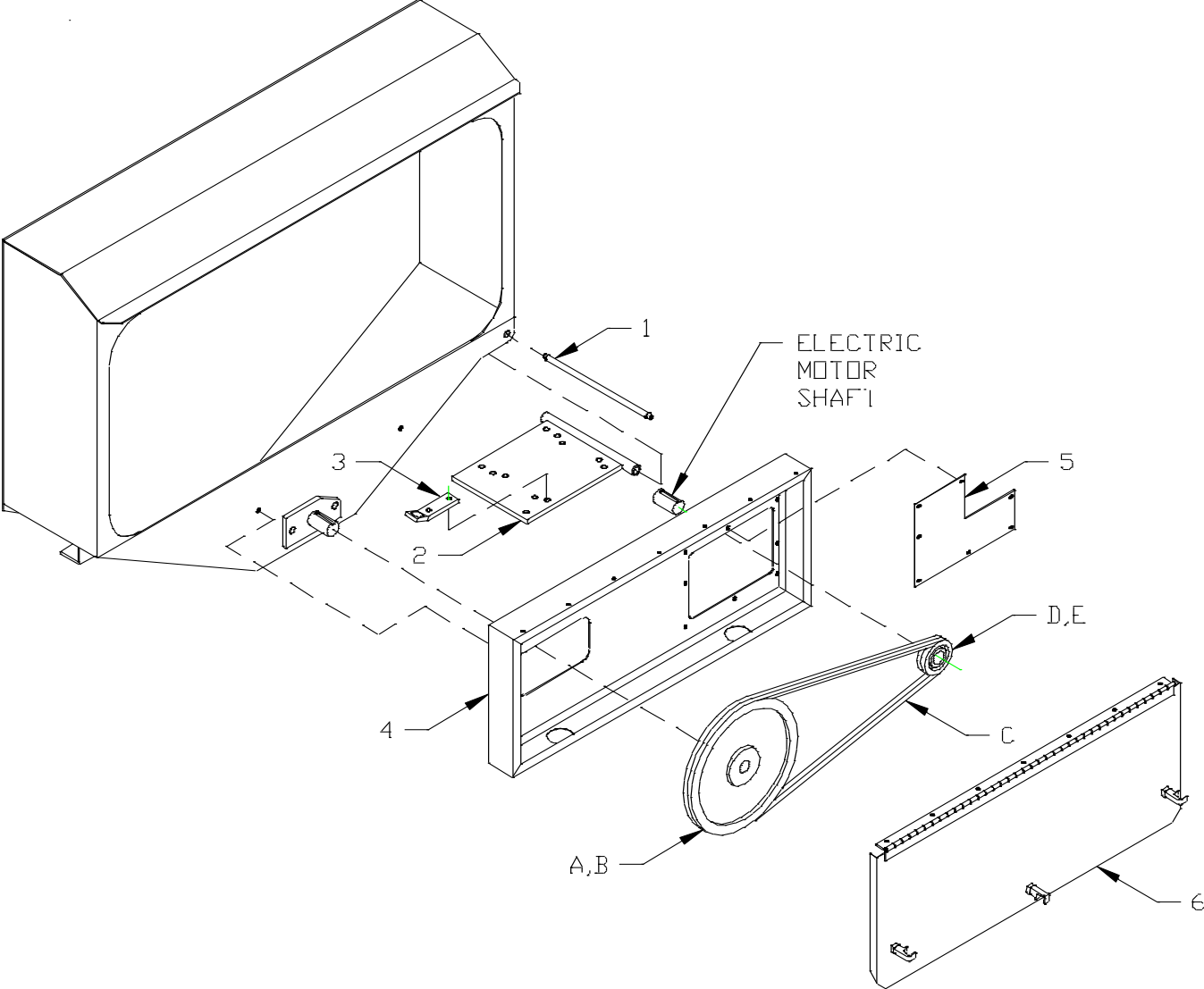
REF #	PART #	DESCRIPTION	QTY.
1	338441	CROSS KIT 2300	2
2	338452	INBOARD YOKE I W2300 041318	2
3	338455	YOKE 1-3/8"-6 W2300 ASGE	1
4	338456	YOKE W2300 1-1/2" RB	1
5	338461	INNER PROFILE Ov W2300 013377	1
6	338462	OUTER PROFILE I W2300 050184	1
7	338473	ROLL DRIVE PIN WLTSH 10MM x 90MM	2
8	338490	SHIELD CONE 5 RIB W2300	2
9	338491	OUTER SHIELD TUBE RD - 058023	1
10	338492	INNER SHIELD TUBE RD - 057679	1
11	338493	BEARING RING SC15, 087279	2

HAY PROCESSOR ASSEMBLY



REF #	PART #	DESCRIPTION	QTY.
1	840551	HAY PAN FRONT REST WA	1
2	840552	HAY PAN REAR REST WA	1
3	840549	FRONT HAY PAN SUPPORT ANGLE WA	1
4	840550	REAR HAY PAN SUPPORT ANGLE WA	1
5	840510	HAY PAN WA	1
6	140529	HAY PAN BUSHING	4
7	385004	SERRATED HAY KNIFE	43
8	150223	KNIFE BACK-UP PLATE	43
9	140665	HAY PAN FRONT EXTENSION	1
10	140664	HAY PAN SIDE EXTENSION	1
11	140666	HAY PAN REAR EXTENSION	1
12	140638	HAY ANGLE (SHORT)	1
13	140639	HAY ANGLE (LONG)	1

STATIONARY DRIVE ASSEMBLY



STATIONARY DRIVE ASSEMBLY

REF #	PART #	DESCRIPTION	QTY.
1	140656	ELECTRIC MOTOR HINGE PIN	1
2	840544	ELECTRIC MOTOR MOUNT WA	1
3	140688	MOTOR MOUNT BRACKET	1
4	840558	BELT SHIELD WA	1
5	140130	BELT SHEILD COVER	1
6	740508	BELT SHIELD DOOR ASSEMBLY	1

5HP ELECTRIC MOTOR KIT (3 PHASE) - #640018

REF #	PART #	DESCRIPTION	QTY.
A	324214	SHEAVE, 2517 3V-2 GROOVE 14.0"	1
B	335026	BUSHING, 2517 1-1/2" TL	1
C	325080	V-BELT, 3VX-800	2
D	324100	SHEAVE, 3V-2 GROOVE 3.0" JA	1
E	336012	BUSHING, JA 1-1/8" QD	1

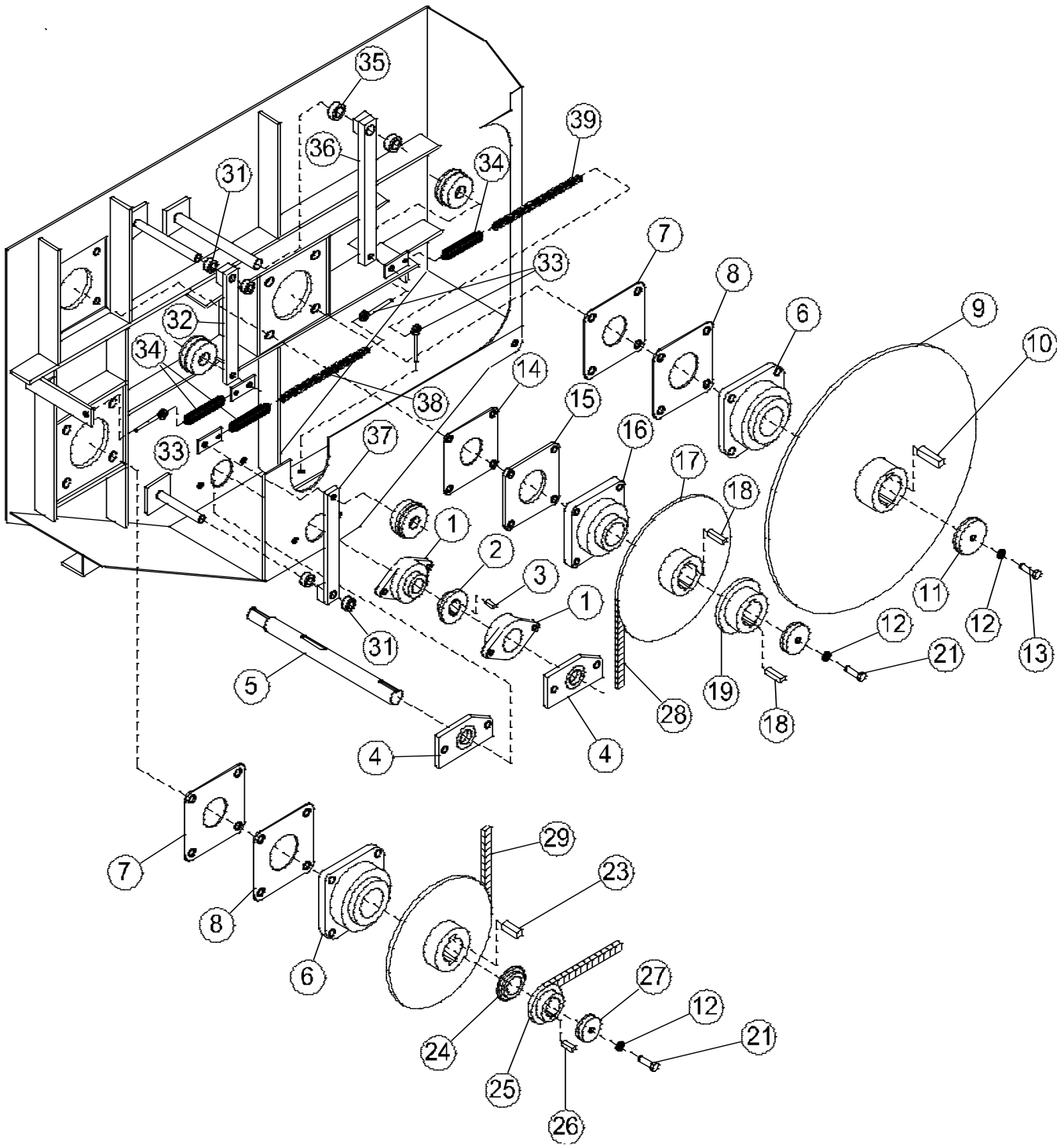
5HP ELECTRIC MOTOR KIT (SINGLE PHASE) - #640019

REF #	PART #	DESCRIPTION	QTY.
A	324214	SHEAVE, 2517 3V-2 GROOVE 14.0"	1
B	335026	BUSHING, 2517 1-1/2" TL	1
C	325080	V-BELT, 3VX-800	2
D	324099	SHEAVE, SH 3V-2 GROVE 3.0"	1
E	336014	BUSHING, SH 1-3/8" QD	1

7-1/2HP ELECTRIC MOTOR KIT (SINGLE & 3 PHASE) - #640021

REF #	PART #	DESCRIPTION	QTY.
A	324214	SHEAVE, 2517 3V-2 GROOVE 14.0"	1
B	335026	BUSHING, 2517 1-1/2" TL	1
C	325080	V-BELT, 3VX-800	2
D	324204	SHEAVE, 1610 3V-2 GROOVE 3.65"	1
E	335022	BUSHING, 1610 1-3/8" TL	1

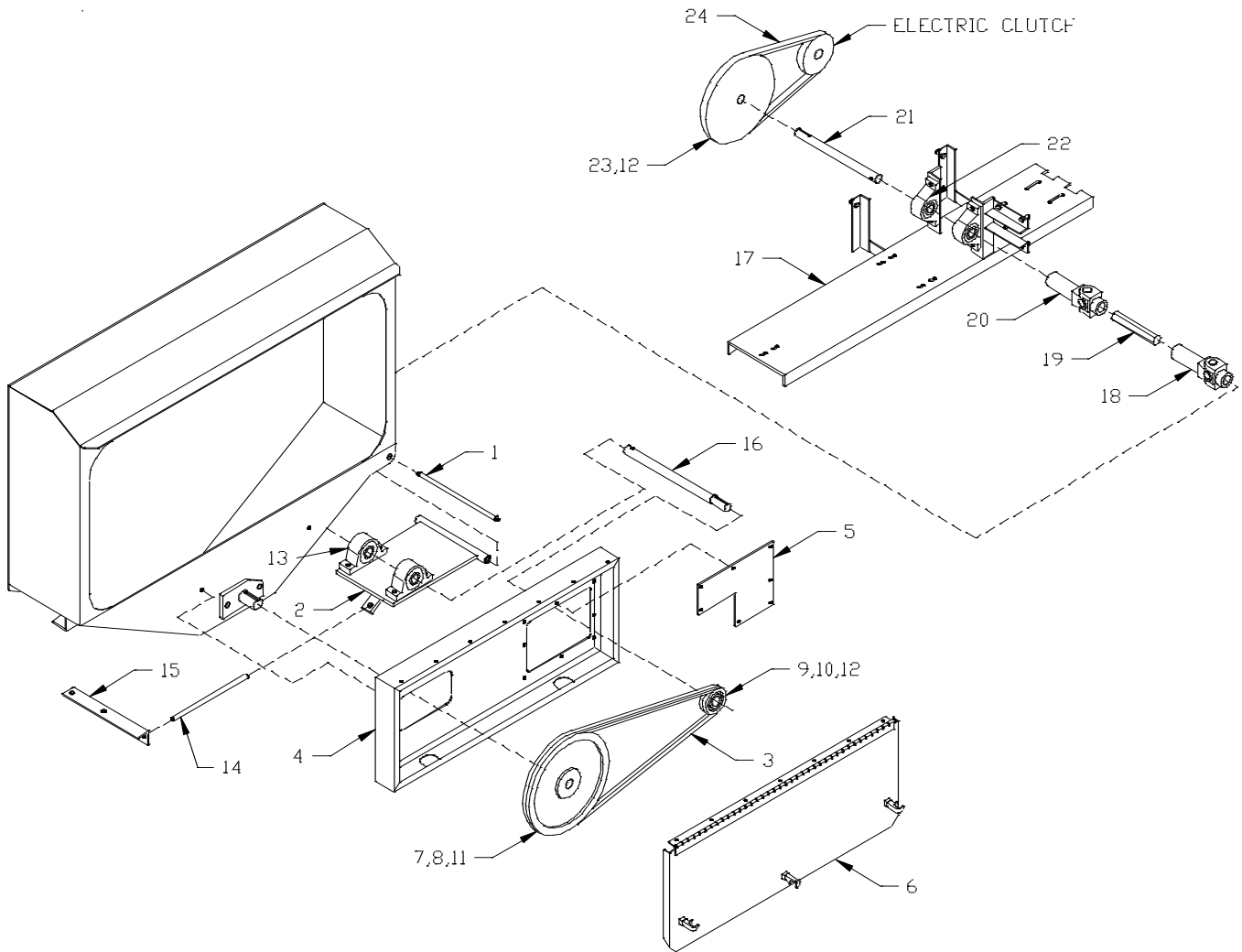
84-8 DRIVE ASSEMBLY



84-8 DRIVE ASSEMBLY

REF #	PART #	DESCRIPTION	QTY.
1	340225	BEARING, 2-BOLT FLANGE, FX3-W224E 1-1/2"	2
2	330516	SPROCKET, 50B15H 1-1/2" BORE	1
3	140668	KEY, 3/8" x 1/4" x 1"	2
4	781111	SHAFT SEAL ASSEMBLY 1-1/2"	2
A	355024	SEAL, 1-1/2" CR 15004	4
5	140745	INPUT SHAFT 18-7/8" (After Serial #810118547)	1
	140623	INPUT SHAFT 18-7/8" (Before Serial #810118547)	1
6	340446	BEARING. 4-BOLT FLANGE, F247 2-15/16"	2
7	140604	SHAFT SEAL, 3-1/4"	2
8	140570	SHAFT SEAL PLATE, 3-1/4"	2
9	840545	SPROCKET WA, 60B112	1
10	140652	KEY, 3/4" x 5/8" x 2-3/4"	2
11	840543	END CAP WA	1
12	402008	SPLIT LOCK WASHER, 1/2"	3
13	405704	HHCS, 1/2"-13 x 1-3/4"	1
14	140603	SHAFT SEAL, 3"	1
15	140569	SHAFT SEAL PLATE, 3"	1
16	340437	BEARING, 4-BOLT FLANGE, F3-Y239N 23-7/16"	1
17	840547	SPROCKET WA, 50B72	1
18	150514	KEY, 5/8" x 1/2" x 2"	4
19	840548	SPROCKET WA, 60B21H	1
20	840561	END CAP WA	1
21	405703	HHCS, 1/2"-13 x 1-1/2"	2
22	840546	SPROCKET WA, 60B24	1
23	140669	KEY, 3/4" x 5/8" x 2"	2
24	140676	BOTTOM AUGER SPACER	1
25	330604	SPROCKET, 60B15H	1
26	140598	KEY, 1/2" x 3/8" x 1-1/4"	2
27	840562	END CAP WA	1
28	320599T	ROLLER CHAIN, #50 x 160 PITCHES	1
29	320684T	ROLLER CHAIN, #60 x 82 PITCHES	1
30	320695THT	ROLLER CHAIN, #60 x 140 PITCHES	1
31	412412	SET COLLAR, 3/4"	4
32	781107	IDLER ARM ASSEMBLY #60	1
A	187154	IDLER BLOCK, #60	1
B	187153	PULL TAB, 1/2"	1
C	873052	IDLER ARM WA	1
33	410825	EYEBOLT, 1/4"-20 x 5" x 1/2" x 6" x 3"	3
34	410010	PULL SPRING, 7/8"OD x 4-1/4" x 0.105"	3
35	412426	SET COLLAR, 1"	2
36	750074	IDLER ARM ASSEMBLY #60	1
A	187154	IDLER BLOCK, #60	1
B	187153	PULL TAB, 1/2"	1
C	850190	IDLER ARM WA	1
37	750058	IDLER ARM ASSEMBLY #50	1
A	150518	IDLER BLOCK, #50	1
B	187153	PULL TAB, 1/2"	1
C	873052	IDLER ARM WA	1
38	412020	PASSING LINK CHAIN 2/0	1.75 FT
39	412020	PASSING LINK CHAIN 2/0	0.75 FT

PORTABLE DRIVE ASSEMBLY



PORTABLE DRIVE ASSEMBLY

REF #	PART #	DESCRIPTION	QTY.
1	140656	HINGE PIN	1
2	840565	PORTABLE HINGE PLATE WA	1
3	325074	V-BELT, 3VX-710	2
4	840558	BELT SHIELD WA	1
5	140130	BELT SHIELD COVER	1
6	740508	BELT SHIELD DOOR ASSEMBLY	1
7	324214	SHEAVE, 2517 3V-2 GROOVE 14.0"	1
8	335026	BUSHING, 2517 1-1/2" TL	1
9	324204	SHEAVE, 1610 3V-2 GROOVE 3.65"	1
10	335020	BUSHING, 1610 1-1/8" TL	1
11	185480	KEY, 3/8" SQ	1
12	140261	KEY, 1/4" SQ x 1-3/8"	2
13	340919	BEARING, 1-1/4" PILLOW BLOCK LB P3Y220N	2
14	140260	PORT HINGE PLATE ROD	1
15	140242	BELT TENSION ANGLE	1
16	140081	JACKSHAFT	1
17	840567	PORTABLE JACKSHAFT BASE WA	1
18	338241	SLIP-JOINT ASSEMBLY	1
A	338239	HEX LONG SLIP JOINT, #12 1-1/8"	1
B	338240	ROUND U-JOINT, #12 1-1/4"	1
C	338421	CROSS & BEARING KIT, 1200 SERIES	1
19	140259	CONNECTOR SHAFT, 1-1/8" HEX	1
20	338242	U-JOINT ASSEMBLY	1
A	338237	HEX U-JOINT, #12 1-1/8"	1
B	338238	ROUND U-JOINT, #12 1-1/8"	1
C	338421	CROSS & BEARING KIT, 1200 SERIES	1
21	140082	DRIVE SHAFT	1
22	340917	BEARING, 1-1/8" PILLOW BLOCK LB PL3Y218N	2
23	840574	JACK SHAFT PULLEY WA	1
24	325059	V-BELT BX-52	1

This page intentionally left blank.