



625 TRUCK

VERTICAL FEED MIXER TRUCK OPERATION AND PARTS MANUAL



**ROTO-MIX LLC
P.O. BOX 1724
2205 E. Wyatt Earp Blvd.
Dodge City, Kansas 67801
(620) 225-1142
© ROTO-MIX LLC 2006**

TABLE OF CONTENTS

	PAGE NO.
INTRODUCTION.....	4
WARRANTY	5
SCALES WARRANTY & SERVICE POLICY	6
OPERATOR QUALIFICATIONS	7
SAFETY	8-18
LOADING INSTRUCTIONS.....	19
TROUBLE SHOOTING.....	20
LUBRICATION	21-22
SPECIFICATIONS & DIMENSIONS.....	23-25
HOW TO READ A ROTO-MIX SERIAL NUMBER	26
REPAIR PARTS CONTENTS PAGE.....	27

INTRODUCTION

Congratulations on the purchase of your new Vertical Mixer from ROTO-MIX. With proper operation and preventative maintenance it will last for years.



This SAFETY ALERT SYMBOL indicates important safety messages in the manual. When you see this symbol, be alert to the possibility of PERSONAL INJURY and carefully read the message that follows.

NEVER OPERATE WITHOUT ALL COVERS, SHIELDS AND GUARDS IN PLACE. KEEP HANDS, FEET AND CLOTHING AWAY FROM MOVING PARTS.

⚠ WARNING Some covers and guards have been removed for illustrative/photographic purposes only in this manual. However, equipment should never be operated in this condition. Keep all shields in place. If shield removal becomes necessary for repairs, replace the shield prior to use.

The Guarantee appears in the front of this book along with the Registration.

For information on ordering repair parts, refer to the Repair Parts section at the back of this book.

The serial number plate is located on the driver's side lower front of the main frame. This number should be recorded on the Registration and Inspection Certificate for your reference and for proper identification of your mixer by ROTO-MIX.

You are urged to study this manual and follow the instructions carefully. Your efforts will be repaid in better operation and service as well as a savings in time and repair expense.

Failure to read this manual and understand the safe operation of the mixer could lead to serious injury.

If you do not understand the instructions in this manual contact either your dealer or ROTO-MIX at Dodge City, Kansas 67801.

This supersedes all previous published instructions.



Limited Warranty Statement

ROTO-MIX LLC warrants to the original purchaser all products manufactured by it to be free from defects in material and workmanship under normal use and service.

ROTO-MIX's obligation under this warranty is limited to repairing or replacing, as the company may elect, free of charge and without charge for installation, at the place of business of a dealer or distributor authorized to handle the equipment covered by this warranty or at a ROTO-MIX facility, any parts that prove, in the company's judgment, to be defective in material or workmanship within one (1) year after delivery to the original purchaser, and still owned by the original purchaser. This warranty shall in no way make ROTO-MIX liable to anyone for personal injuries or damages, loss of time, or expense of any kind either direct or indirect resulting from part failure or defect. This warranty is subject to acts of God, fire and existing conditions of supply and demand, or production, or ability or inability to deliver, or for any other valid reason beyond the reasonable control of ROTO-MIX, to obtain materials, manufactured replacement parts, or make delivery thereof. No distributor, dealer, agent, or ROTO-MIX employee (other than the CEO or President in writing) is authorized to extend any other or further express or implied warranty or incur any additional obligation on ROTO-MIX's behalf in connection with the sale of this product.

If ROTO-MIX, or its duly authorized representative, shall find that such returned part or parts are defective and such defects, or defect, are included in and covered by said warranty, then such defective part or parts shall promptly be replaced without charge to the purchaser, F.O.B. the ROTO-MIX plant.

Product Registration - It is a condition of this warranty that the original purchaser must fill out the warranty card furnished by ROTO-MIX and that it be returned to ROTO-MIX within 10 days of purchase and be recorded in ROTO-MIX's owner file for this warranty to be valid. In the event an owner's card is not on file at the ROTO-MIX office, the warranty period will extend only from date equipment was picked up or shipped from the ROTO-MIX plant.

Maintenance - It is the customer's responsibility to maintain their equipment in accordance with the instructions provided in the Operator's Manual. ROTO-MIX recommends that you keep records and receipts; you may be asked to prove that maintenance instructions have been followed.

Operation - It is the customer's responsibility to operate the equipment only for the purpose for which it was designed and in accordance with all safety and operational recommendations contained in the Operators Manual. If a defect in materials or workmanship occurs, it is the customer's responsibility to cease operating the equipment until authorized repairs are made. **Damage, which occurs from continued operation, may not be covered by this warranty.**

What this Warranty Covers

This warranty covers failures caused by defects in materials or workmanship only.

This Warranty does **not** cover failures caused by:

- Improper operation
- Natural calamities
- Unauthorized modifications
- Unauthorized repairs
- Use of Non ROTO-MIX parts
- Neglected maintenance
- The use of PTO Shaft Adaptors
- Usage contrary to the intended purpose of the product

Warranty continues on the next page.

Limited Warranty Statement continued

This Warranty does not cover replacement of Wear or Maintenance Items including, but not limited to.

- | | | | |
|--------------|----------|-------------|----------|
| - Lubricants | - Tires | - Chains | - Blades |
| - Filters | - Augers | - Idlers | - Belts |
| - Hoses | - Wipers | - Batteries | |

This Warranty does not cover:

- Pickup and delivery of the equipment
- Service Calls or Travel Time to and from sites
- Rental of replacement equipment during repair period
- Products that have been declared a total loss and subsequently salvaged
- Overtime labor charges
- ROTO-MIX is not responsible and will not be liable for damage caused to persons or property, commercial loss, loss of time or production, loss of use by reason of the installation or use of ROTO-MIX products or their mechanical failure.

Right to Make Changes

ROTO-MIX reserves the right to make any changes to a ROTO-MIX product at any time without incurring any obligation with respect to any product previously ordered, sold or shipped, with or without notice.

Parts Warranty

ROTO-MIX warrants replacement parts against defects in materials or workmanship for a period of 90 days or the remainder of the product warranty, whichever is longer. Remedy for defective replacement parts for units that are beyond the original product warranty, will be limited to replacement of the failed part. Failures that are due to damage, improper installation, lack of maintenance or improper operation will not be covered.

ROTO-MIX 2205 East Wyatt Earp Blvd., Dodge City, KS 67801 (620) 225-1142 Fax: (620) 225-6370

SCALES WARRANTY & SERVICE POLICY

DIGI-STAR SCALE SYSTEMS

Digi-Star, LLC warrants for a period of one year from date of installation, to correct by repair or replacement, at Digi-Star's option, any defect in material or workmanship in any part of this product. In the event of replacement, Digi-Star's sole obligation shall be to provide replacement products or parts. F.O.B. Digi-Star, LLC, W5527 Hwy 106, Fort Atkinson, WI 53538 USA.

WEIGH-TRONIX SCALE SYSTEMS

WEIGH-TRONIX warrants for a period of one year from date of installation, to correct by repair or replacement, at Weigh-Tronix's option, any defect in material or workmanship in any part of this product. In the event of replacement, Weigh-Tronix's sole obligation shall be to provide replacement products or parts. F.O.B. Avery Weigh-Tronix, 1000 Armstrong Drive, Fairmont, MN 56031-1439 USA.

OPERATOR QUALIFICATIONS

Operation of this mixer shall be limited to competent and experienced persons. In addition, anyone who will operate or work around a mixer must use good common sense. In order to be qualified, he or she must also know and meet all other qualifications, such as:

1. Some regulations specify that no one under the age of sixteen (16) may operate power machinery. It is your responsibility to know what these regulations are in your area and/or situation.
2. Current OSHA regulations state in part: At the time of initial assignment and at least annually thereafter, the employer shall instruct **EVERY** employee in the safe operation and servicing of all equipment with which the employee is, or will be involved.
3. Unqualified persons are to **STAY OUT OF THE WORK AREA.**
4. A person who has not read and understood all operating and safety instructions is not qualified to operate the machinery.

FAILURE TO READ THIS MIXER MANUAL AND ITS SAFETY INSTRUCTIONS IS A MISUSE OF THE EQUIPMENT.



SAFETY

TAKE NOTE! THIS SAFETY ALERT SYMBOL FOUND THROUGHOUT THIS MANUAL IS USED TO CALL YOUR ATTENTION TO INSTRUCTIONS INVOLVING YOUR PERSONAL SAFETY AND THE SAFETY OF OTHERS. FAILURE TO FOLLOW THESE INSTRUCTIONS CAN RESULT IN INJURY OR DEATH.



THIS SYMBOL MEANS

ATTENTION!

BECOME ALERT!

YOUR SAFETY IS INVOLVED!

SIGNAL WORDS: Note the use of the signal words DANGER, WARNING, and CAUTION with the safety messages. The appropriate signal word for each has been selected using the following guidelines:

DANGER: Indicates an imminently hazardous situation that, if not avoided, will result in serious injury or death. This signal word is to be limited to the most extreme situations typically for machine components which, for functional purposes, cannot be guarded.

WARNING: Indicates a potentially hazardous situation that, if not avoided, will result in serious injury or death, and includes hazards that are exposed when guards are removed. It may also be used to alert against unsafe practices.

CAUTION: Indicates a potentially hazardous situation that, if not avoided, may result in minor or moderate injury. It may also be used to alert against unsafe practices.

If you have questions not answered in this manual or require additional copies or the manual is damaged, please contact your dealer or ROTO-MIX, 2205 E. Wyatt Earp, Dodge City, Kansas, 67801. (Telephone) 620-225-1142 (Fax) 620-225-6370

SAFETY FIRST

REMEMBER: The careful operator is the best operator. Most accidents are caused by human error. Certain precautions must be observed to prevent the possibility of injury or death.



DO NOT ALLOW PERSONNEL OTHER THAN THE QUALIFIED OPERATOR NEAR THE MACHINE.



NEVER START MACHINE UNTIL ALL GUARDS AND SAFETY SHIELDS ARE IN PLACE.



DO NOT CLEAN, ADJUST OR LUBRICATE THE MACHINE WHILE IT IS IN MOTION.



BEFORE STARTING TRACTOR ENGINE, BE SURE PTO SHIELDS TURN FREELY.



LOOSE OR FLOPPY CLOTHING SHOULD NOT BE WORN BY THE OPERATOR.

OPERATING PRECAUTIONS & INSTRUCTIONS:

- A. Check to see that no obstructions are present in the mixer prior to start up.
- B. Before loading, run the mixer empty and check all operations.
- C. Do not overload the mixer. Maximum load for the 625 is 21,500 LB. Maximum load is determined by weight, not volume.
- D. Be sure all shields are in place before operation.
- E. Use common sense when operating.



EQUIPMENT SAFETY GUIDELINES

Safety of the operator is one of the main concerns in designing and developing a new piece of equipment. Designers and manufactures build in as many safety features as possible. However, every year many accidents occur which could have been avoided by a few seconds of thought and a more careful approach to handling equipment. You, the operator, can avoid many accidents by observing the following precautions in this section. To avoid personal injury, study the following precautions and insist those working with you, or for you, follow them.

In order to provide a better view, certain photographs or illustrations in this manual may show an assembly with a safety shield removed. However, equipment should never be operated in this condition. Keep all shields in place. If a shield is removed to perform maintenance or make a repair, reinstall the shield after the maintenance or repair is complete.

Replace any CAUTION, WARNING, DANGER or instruction safety decal that is not readable or is missing. Location of such decals are indicated in this manual.

Do not attempt to operate this equipment under the influence of drugs or alcohol.

Review the safety instructions with all users annually.

This equipment is dangerous to children and persons unfamiliar with its operation. The operator should be a responsible adult familiar with farm machinery and trained in this equipment's operations. Do not allow persons to operate or perform maintenance or repairs on this unit until they have read this manual and have developed a thorough understanding of the safety precautions and of how it works.

Do not paint over, remove or deface any safety signs or warning decals on your equipment. Observe all safety signs and follow the instructions on them.

Never exceed the limits of a piece of machinery, in its ability to do a job, or to do so safely, if safe operation is in question - **DON'T TRY IT.**



LIGHTING AND MARKING

It is the responsibility of the customer to know the lighting and marking requirements of the local highway authorities and to install and maintain the equipment to provide compliance with the regulations. Add extra lights when transporting at night or during periods of limited visibility.



KEEP ALL SHIELDS IN PLACE

Do not operate mixer without safety shields in place.

Rotating parts can crush or dismember causing personal injury or death.

Disconnect PTO driveline before removing shields for adjustment or service.



OPERATE MIXER SAFELY

Rotating parts can entangle or strike people, resulting in personal injury or death.

Never enter a mixer while in operation.

Operate the mixer from the operator's tractor seat only.

Do not exceed load capacity of the mixer. (See loading instructions).

Reduce speed when turning or traveling on rough terrain.

Avoid traveling over loose fill, rocks, ditches or holes.

Keep transmissions in gear when traveling downhill.



KEEP RIDERS OFF MIXER

Keep riders off.

Riders are subject to injury such as being struck by foreign objects and being thrown off. Riders also obstruct the operator's view resulting in the machine being operated in an unsafe manner.





STAY CLEAR OF ROTATING DRIVELINES

Entanglement in rotating driveline can cause serious injury or death.

Keep driveline shields in place at all times. Make sure rotating shields turn freely.

Do not wear loose-fitting clothing which may catch in moving parts. Stop the engine and be sure PTO driveline is stopped before making adjustments, connections, or cleaning out PTO driven equipment.



PREVENT BATTERY EXPLOSIONS

Keep sparks, lighted matches, and open flame away from the top of battery. Battery gas can explode.

Never check battery charge by placing a metal object across the posts. Use a volt-meter or hydrometer.

Do not charge a frozen battery; it may explode. Warm battery to 60°F (16°C).



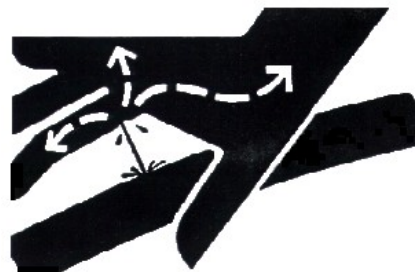
AVOID HIGH-PRESSURE FLUIDS

Escaping fluid under pressure can penetrate the skin causing serious injury or death.

Avoid this hazard; relieve pressure before disconnecting hydraulic or other lines. Tighten all connections before applying pressure.

Search for leaks with a piece of cardboard. Protect hands and body from high pressure fluids.

If an accident occurs, see a doctor immediately. Any fluid injected into the skin must be surgically removed within a few hours or gangrene may result. Doctors unfamiliar with this type of injury should reference a knowledgeable medical source.





SAFETY DECAL CARE

Keep safety decals and signs clean and legible at all times.

Replace safety decals and signs that are missing or have become illegible.

Replaced parts that displayed a safety sign should also display the current sign.

Safety decals or signs are available from your dealer or the ROTO-MIX manufacturing plant.

How to Install Safety Decals:

Be sure that the installation area is clean and dry.

Decide on the exact position before you remove the backing paper of the decal.

Remove the smallest portion of the split backing paper.

Align the decal over the specified area and carefully press the small portion with the exposed sticky backing in place.

Slowly peel back the remaining paper and carefully smooth the remaining portion of the decal in place.

Small air pockets can be pierced with a pin and smoothed out using the piece of decal backing paper.



IMPORTANT
ALWAYS REDUCE ENGINE SPEED
TO IDLE BEFORE ENGAGING
AND DISENGAGING PTO.
DISENGAGE TRACTOR PTO
BEFORE TURNING.

440801



PRACTICE FIRE PREVENTION

Keep fire extinguishers accessible at all times. Use the extinguisher recommended for the material being processed. It should be rated safe for use on electrical fires.

Never smoke close to combustible material.

Clean the area before welding or other activities which may make sparks.

Keep all components that generate excessive heat clear of oil and other combustible materials.



REMEMBER

Your best assurance against accidents is a careful and responsible operator. If there is any portion of this manual or function you do not understand, contact your dealer or the ROTO-MIX plant.

BEFORE OPERATION:

Carefully study and understand this manual.

Do not wear loose-fitting clothing which may catch in moving parts.

Always wear protective clothing and substantial shoes.

Assure that tires are inflated evenly.

Give the unit a visual inspection for any loose bolts, worn parts or cracked welds, and make necessary repairs. Follow the maintenance safety instructions included in this manual.

Be sure that there are no tools lying on or in the mixer.

Do not use the unit until you are sure that the area is clear, especially clear of children and animals.

Because it is possible that this mixer may be used in dry areas or the presence of combustibles, special precautions should be taken to prevent fires and firefighting equipment should be readily available.

Don't hurry the learning process or take the unit for granted. Become familiar with your new mixer before operating.

Practice operation of your mixer and its attachments. Completely familiarize yourself and other operators with its operation before using.



DURING OPERATION:

Beware of bystanders, **particularly children!** Always look around to make sure that it is safe to start the engine or move the unit. This is very important with higher noise levels and quiet cabs; you may not hear people shouting.

NO PASSENGERS ALLOWED - Do not carry passengers anywhere on, or in equipment, except as required for operation.

Keep hands and clothing clear of moving parts.

Do not clean, lubricate or adjust your mixer while it is moving.

Be observant of the operating area and terrain - watch for holes, rocks or other hidden hazards. Always inspect the area prior to operation.

Do not operate near the edge of drop-offs or banks.

Do not operate on steep slopes as rollover may result.

Operate up and down (not across) slopes. Avoid sudden starts and stops.

Pick a smooth and as level as possible route when transporting across fields. Avoid the edges of ditches or gullies and steep hillsides.

Be extra careful when working on inclines.

Clear the equipment of brush, twigs or other materials to prevent buildup of dry combustible materials.

Maneuver the vehicle at safe speeds.

Avoid overhead wires or other obstacles. Contact with overhead lines could cause serious injury or death.

Avoid loose fill, rocks and holes; they can be dangerous for equipment operation or movement. Allow for unit length when making turns.

Do not walk or work under raised components or attachments unless securely positioned and blocked.

Keep all bystanders, pets and livestock clear of the work area.

Never attempt to start engine and/or operate machine while standing alongside of unit.



DURING OPERATION (CONT)

Never leave running mixer unattended.

As a precaution, always recheck the hardware on mixer following every 100 hours of operation. Correct all problems. Follow the maintenance safety procedures.



FOLLOWING OPERATION:

Following operation, set the brakes, disengage all power drives, shut off the engine and remove the ignition keys.

Store the unit in an area away from human activity.

Do not park equipment where it will be exposed to livestock for long periods of time. Damage to equipment and livestock injury could result.

Do not permit children to play on or around the stored unit.

Make sure parked machine is on a hard, level surface and engage all safety devices.

Wheel chocks may be needed to prevent unit from rolling.



HIGHWAY AND TRANSPORT OPERATIONS:

Adopt safe driving practices:

Always drive at a safe speed relative to local conditions and ensure that your speed is low enough for an emergency stop to be safe and secure. Keep speed to a minimum.

Reduce speed prior to turns to avoid the risk of overturning.

Avoid sudden uphill turns on steep slopes.

Always keep the vehicle in gear to provide engine braking when going downhill. Do not coast.

Do not drink and drive.



HIGHWAY AND TRANSPORT OPERATIONS (CONT):

Comply with state and local laws governing highway safety and movement of farm machinery on public roads.

Use approved accessory lighting, flags and necessary warning devices to protect operators of other vehicles on the highway during daylight and nighttime transport.

The use of flashing amber lights is acceptable in most localities. However, some localities prohibit their use. Local laws should be checked for all highway lighting and marking requirements.

When driving mixer on the road or highway under 20 MPH (40 KPH) at night or during the day, use flashing amber warning lights and a slow moving vehicle (SMV) identification emblem.

Plan your route to avoid heavy traffic.

Be a safe courteous driver. Always yield to oncoming traffic in all situations, including narrow bridges, intersections, etc.

Be observant of bridge loading ratings. Do not cross bridges rated lower than the gross weight at which you are operating.

Watch for obstructions overhead and to the side while transporting.

Always operate mixer in a position to provide maximum visibility at all times. Make allowances for increased length and weight of the mixer when making turns, stopping the unit, etc.



PERFORMING MAINTENANCE:

Good maintenance is your responsibility. Poor maintenance is an invitation to trouble.

Make sure there is plenty of ventilation. Never operate the engine of the vehicle in a closed building. The exhaust fumes can cause asphyxiation.

Before working on the mixer, stop the vehicle, set the brakes, disengage the PTO and all power drives, shut off the engine and remove the ignition keys.

Be certain all moving parts on attachments have come to a complete stop before attempting to perform maintenance.

Always use a safety support and block the wheels. Never use a jack to support the machine.



PERFORMING MAINTENANCE (CONT):

Always use the proper tools or equipment for the job at hand.

Use extreme caution when making adjustments.

Never use your hands to locate hydraulic leaks on attachments. Use a small piece of cardboard or wood. Hydraulic fluid escaping under pressure can penetrate the skin.



When disconnecting hydraulic lines, shut off hydraulic supply and relieve all hydraulic pressure.

Openings in the skin and minor cuts can be infected from hydraulic fluid. If injured by escaping hydraulic fluid, see a doctor at once. Gangrene can result. Without immediate treatment, serious infection and reactions can occur.

Replace all shields and guards after servicing and before moving.

After servicing, be sure all tools, parts and service equipment are removed.

Do not allow grease or oil to build up on any step or platform.

Never replace hex bolts with less than grade five (5) bolts unless otherwise specified.

Where replacement parts are necessary for periodic maintenance and servicing, genuine factory replacement parts must be used to restore your equipment to original specifications. ROTO-MIX will not claim responsibility for use of unapproved parts and/or accessories and other damages as a result of their use.

If equipment has been altered in any way from original design, ROTO-MIX does not accept any liability for injury or warranty.

A fire extinguisher and first aid kit should be kept readily accessible while performing maintenance on this mixer.

READ THE FOLLOWING BEFORE WELDING ON THIS MIXER

When welding on your mixer, do not allow the current to flow through the ball bearings or the roller chains. Ground directly to the item being welded. Clean the area before welding and have a fire extinguisher accessible at all times.

Always disconnect the scale instrumentation from the weigh bars or load cells and the power source. Be sure the current does not pass through weigh bars or load cells or scale indicator. The vehicle's alternator should always be disconnected before welding on the unit.

LOADING INSTRUCTIONS & PRECAUTIONS

- A. Visually inspect mixer before each load.
- B. Do not overload the mixer. Mixer capacity is determined by weight. An overloaded mixer will not mix correctly, and will pull harder, which could damage your unit. **Maximum mix weight is 15,500 LB for the 625 model.**
- C. Load hay first with machine running: **TRUCK ENGINE RUNNING FROM 1,500 - 1,700 RPM.** Use a slower auger speed if you are using very tender, very fine-stemmed hay that breaks apart very easily. Slower speeds allow for maximum staple length. Increase auger speed (using the hydrostat control handle) as the hay texture changes from very tender, to fine stemmed, to normal good quality hay, to very rough course hay. **If equipped with restrictor plates (dogs),** adjust to fine tune length of cut. Always start with one dog, preferably the rear, engaged one hole and increase until length of cut is correct. **NOTE: engaging dogs an excessive amount will cause mix quality to deteriorate. Remove all twine, wire and/or wrapping before loading bale into mixer.**
- D. Add balance of grain and/or commodities, keeping more fragile ingredients toward the end of the loading sequence as possible. For best results, add concentrates or other dry ingredients of small quantity as close to the middle of the loading sequence as possible.
- E. Load silage, green chop and/or other high moisture products.
- F. Load molasses, animal fat, and/or other liquid supplements last.
- G. Allow mixer three to four minutes to complete mixing after last ingredient is added. (**NOTE:** this time will vary, and could be longer under certain conditions.)
- H. View mixing operation only from observation platform of mixer. Never allow more than two people on platform at one time.
- I. For best results, offload mixed feed at as high a RPM as possible, with door as open as possible.



Restrictor Plate

HAY PREPARATION:

SMALL BALES (60 to 150 lbs., 2 or 3 wire), LARGE SQUARE BALES (3' x 4' x 8' or 4' x 4' x 8') and ROUND BALES.

Remove all twine, wire and/or wrapping and load bale in mixer.

TROUBLE SHOOTING

⚠ WARNING ALWAYS DISCONNECT OR DISENGAGE POWER TAKE OFF AND REMOVE KEYS FROM TRACTOR BEFORE CLEANING, ADJUSTING, LUBRICATING OR SERVICING THIS MACHINE. FAILURE TO FOLLOW THIS RECOMMENDATION MAY RESULT IN SERIOUS PERSONAL INJURY OR DEATH.

NOTE: THIS CHART DOES NOT COVER ALL PROBLEMS. CONTACT YOUR DEALERSHIP FOR FURTHER ASSISTANCE.

PROBLEM	POSSIBLE CAUSE	POSSIBLE REMEDY
Machine Vibration	Universal Joints Are Out Of Alignment.	Check And Realign
	Worn Out Bearing.	Replace Bearing.
Excessive Bearing Failure	Improper Lubrication	Refer To Lubrication section.
	Contamination	Check Seal
	Excessive Loads.	Refer To General Information About Machine Loading
Mixing quality poor, not thorough.	Leading edge of bottom flight is not adjusted correctly. Kickers on the bottom flight are worn.	Properly adjust leading edge to make contact with the bottom of mixer & move out to come close to the side wall at nearest point. Replace kickers
	Batch has high concentration of light weight ingredients and rotates too fast inside tub for thorough mixing.	Extend restrictor plates (dogs) further into tub as instructed on page 19 (Loading Instructions & Precautions).
	High concentration of long hay, not being torn apart.	Extend restrictor plates (dogs) further into tub as instructed on page 19 (Loading Instructions & Precautions).
Hay being added to batch, but not being incorporated into mixture.	Hay not getting shredded by mixing action, batch rotating inside tub too fast.	Install restrictor plates, extend restrictor plates (dogs) further into tub as instructed on page 19 (Loading Instructions & Precautions).
Too much power being consumed to mix.	Restrictor plates extend too far into tub and retarding rotation of batch.	Move restrictor plates (dogs) away from tub as instructed on page 19 (Loading Instructions & Precautions).

LUBRICATION

DISENGAGE PTO & SHUT OFF POWER BEFORE LUBRICATING THE MACHINE.

DO NOT WEAR LOOSE FITTING CLOTHING THAT MAY CATCH IN MOVING PARTS.

PTO SHAFTS & U-JOINTS: Grease every 8 hours of operation.

IT IS RECOMMENDED THAT ALL TRUCK HYDRAULIC RESERVOIRS (except the gearbox reservoir) use (CITGO Transgard Tractor Hydraulic Fluid - Material Code 633310001).

Approximate quantity of oil in truck hydraulic reservoir is 32 gallons. Hydrostat system uses a 1-1/4" filter element SE-10, part #362442. Gear pump hydraulic system uses a 1" filter element VE-10, part #362441.

OIL FILTER SERVICE: All filters should be changed the first 24 hours after start up of the system, then after the running-in period (50-100 hours of service) and during normal maintenance every 300 - 500 hours of service. 10 micron filter elements are recommended. All reservoirs should be checked daily for proper fluid level. Visually check daily for any fluid leakage.

PLANETARY GEARBOXES: After the first 500 hours of operation, drain initial oil, preferably when box is warm. For an effective oil change, the unit should be flushed with a liquid detergent recommended by the lubricant supplier and refilled with oil. Thereafter oil should be changed every 2000 hours or 12 months, whichever comes first. Inspect and wash oil reservoir breather cap as needed. Air dry before reinstalling. Fill each gearbox with approximately 6 gallon of, **NOTE: (Mobil Delvac Synthetic Gear Oil 75W-90).** Approximate volume of the planetary gearboxes and their reservoir is 15 gallons.

PROCEDURE FOR FILLING PLANETARY GEARBOX: Remove lower and upper oil line from gearbox and attach the lower oil line to the oil supply pump. Pressure oil in gear box until oil appears in the upper oil line. Repeat process with the other planetary gearbox. Reconnect oil lines and fill reservoir to center of sight gauge, run unit and add oil up to center of sight gauge if needed.. Check daily, oil level must always be visible in sight gauge. **NOTE: Refilling the gearbox through the oil reservoir can be done but you will have to let the unit set a considerable amount of time (possibly over night) to equalize the oil level in the gearboxes.**

GEARBOX TEMPERATURES: During normal running conditions, the temperature of the outer casing of the gearbox should not exceed 175°F (80°C).

LUBRICATION CHART

⚠ WARNING ALWAYS DISCONNECT OR DISENGAGE POWER TAKE OFF AND REMOVE KEYS FROM TRUCK BEFORE ADJUSTING, LUBRICATION OR SERVICING THIS MACHINE. FAILURE TO HEED MAY RESULT IN SERIOUS PERSONAL INJURY OR DEATH.

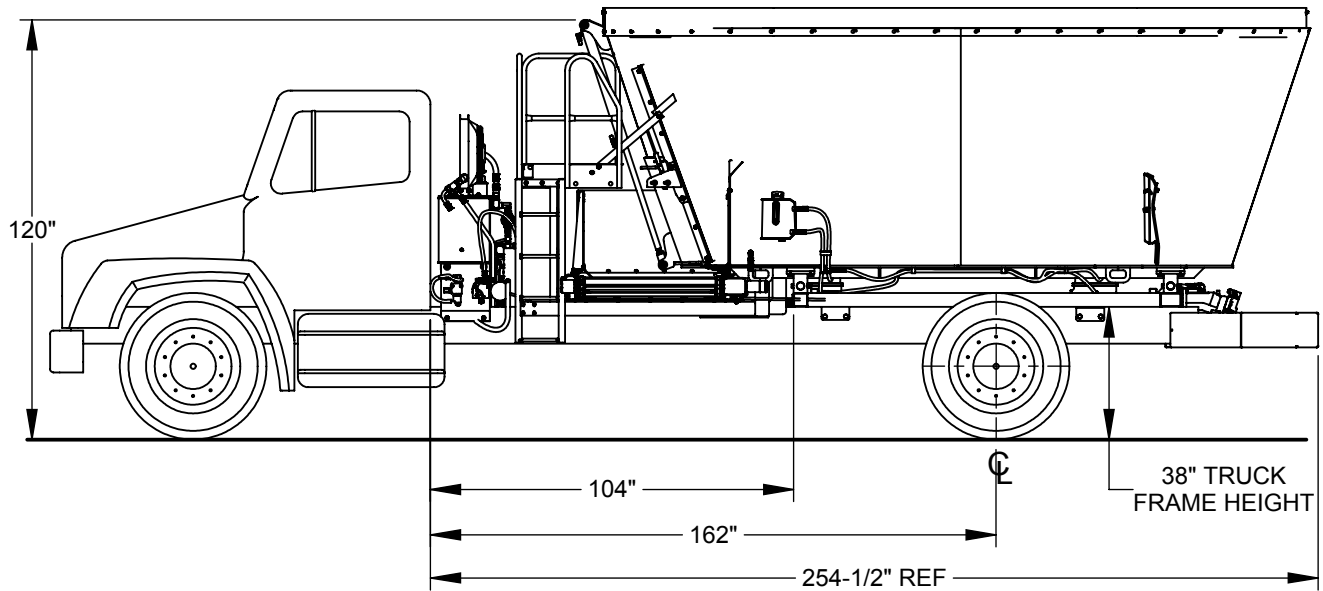
ITEM	LUBRICATION	INTERVAL
Conveyor Chain	Light Weight Oil	Brush or spray on lightly every 40 hours of operation.
Conveyor Bearings	Good Quality Grease	One pump every 8 hours of operation.
U-Joint	Good Quality Grease	Every 8 hours
Truck Hydrostat Reservoir	CITGO Transgard Tractor Hydraulic Fluid - Material Code 633310001	2000 hours or every 12 months, whichever comes first
Planetary Gearbox	Mobil Delvac Synthetic Gear Oil 75W-90	After the first 500 hours of operation, then 2000 hours or every 12 months, whichever comes first.
Oil Filters	<p>10 micron filter elements are recommended.</p> <p>Hydrostat system uses a 1-1/4" filter element SE-10, part #362442.</p> <p>Gear pump hydraulic system uses a 1" filter element VE-10, part #362441.</p>	<ol style="list-style-type: none"> 1. 24 hours after start up of the system. 2. After the running-in period (50-100 hours of service). 3. Normal maintenance every 300-500 hours of service.

625 VERTICAL MIXER SPECIFICATIONS

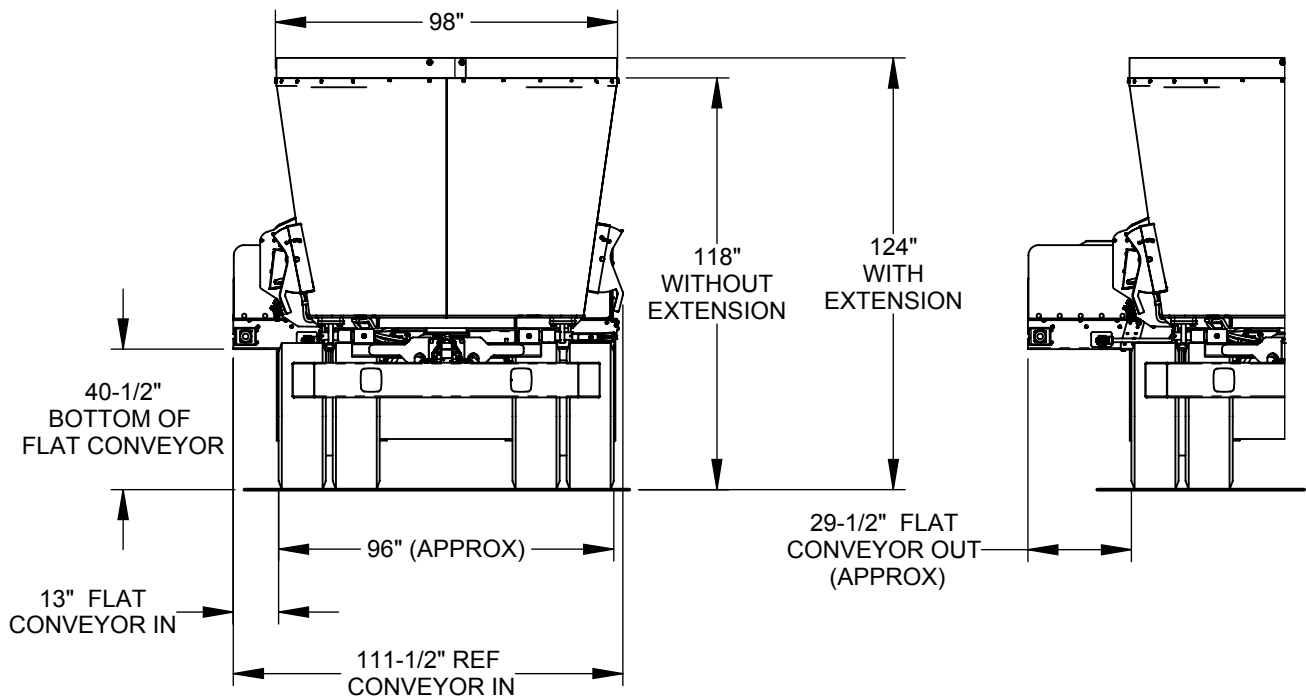
MODEL DESCRIPTION	625 Truck
Maximum load with a hay ration by weight, lb. (kg)	11,200 lbs. (5080kg)
Maximum load with a heavy ration by weight, lb. (kg)	15,500 lbs. (7030kg)
Length, Mixing Chamber	202"
Transport Width	111-1/2" (APPROX)
Overall Height	118" (APPROX)
Truck recommended Horsepower	225 (168)
Discharge Magnets	Optional
Screw Speeds	Variable up to 48 RPM
Conveyor Width	42"
Mixing Capacity, (cu ft)	620
Mixing Capacity, (bushels)	498
Bottom Plate Thickness	5/8"
Side Sheet Thickness	1/4"
Baffle Thickness	1/4"

All Dimensions & Specifications are Approximate and Subject to Change Without Notice.

625 VERTICAL SINGLE AXLE TRUCK DIMENSIONS

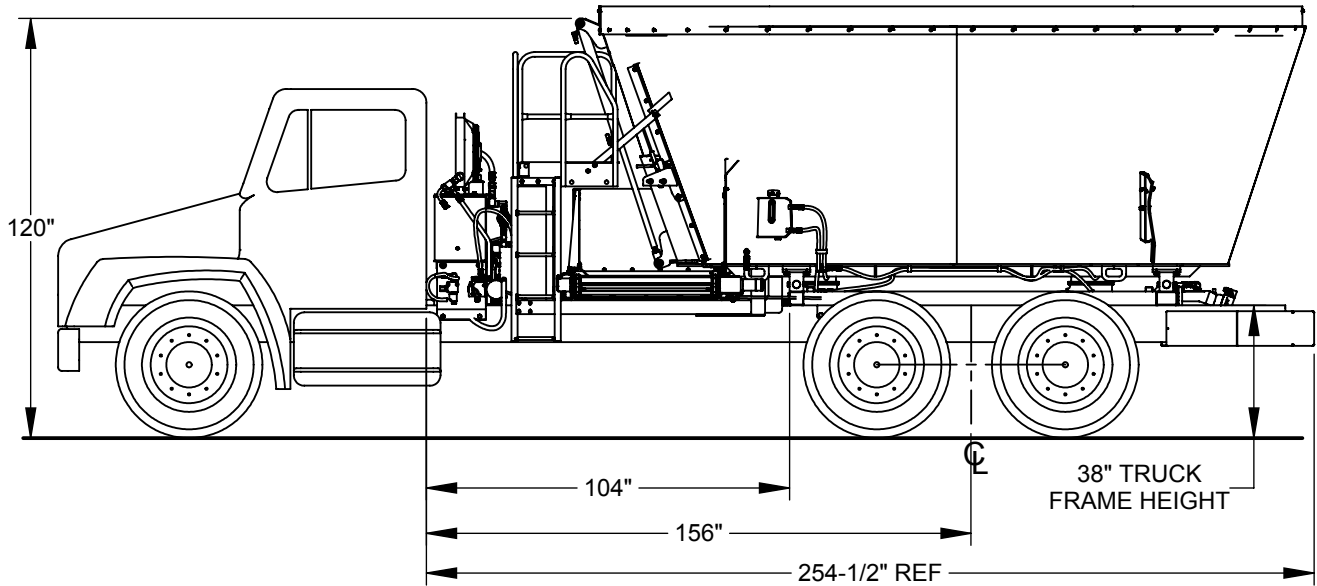


**HEIGHT DIMENSIONS ARE BASED ON
A 38" TRUCK FRAME HEIGHT**

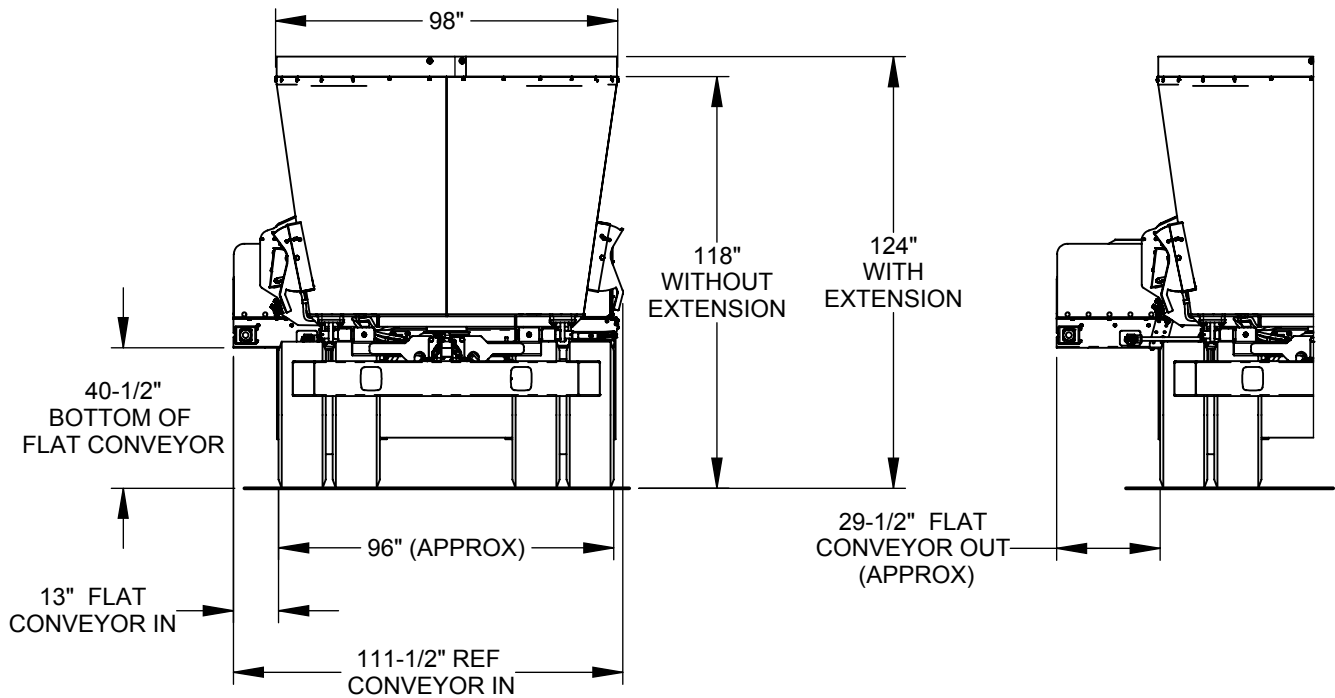


All Dimensions & Specifications are Approximate and Subject to Change Without Notice.

625 VERTICAL TANDEM AXLE TRUCK DIMENSIONS

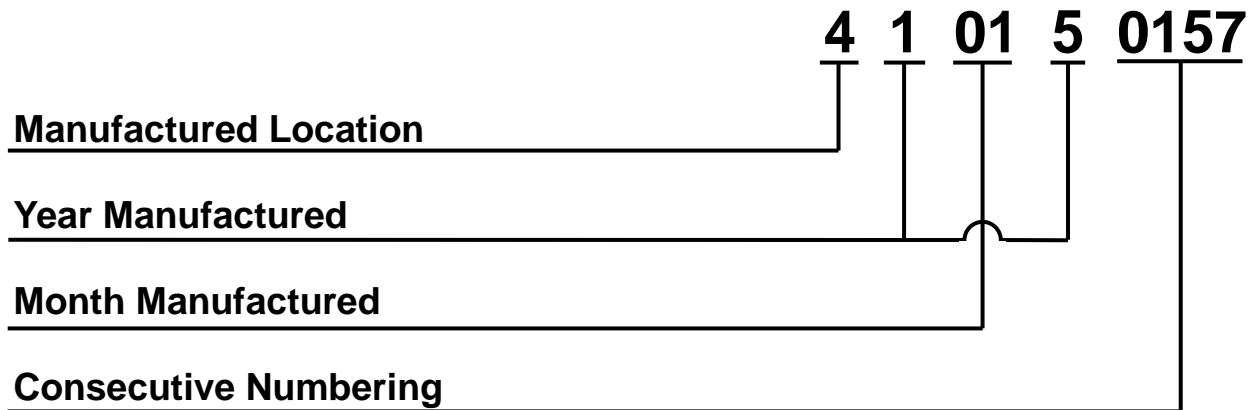


HEIGHT DIMENSIONS ARE BASED ON A 38" TRUCK FRAME HEIGHT



All Dimensions & Specifications are Approximate and Subject to Change Without Notice.

How to read a Roto-Mix Serial Number

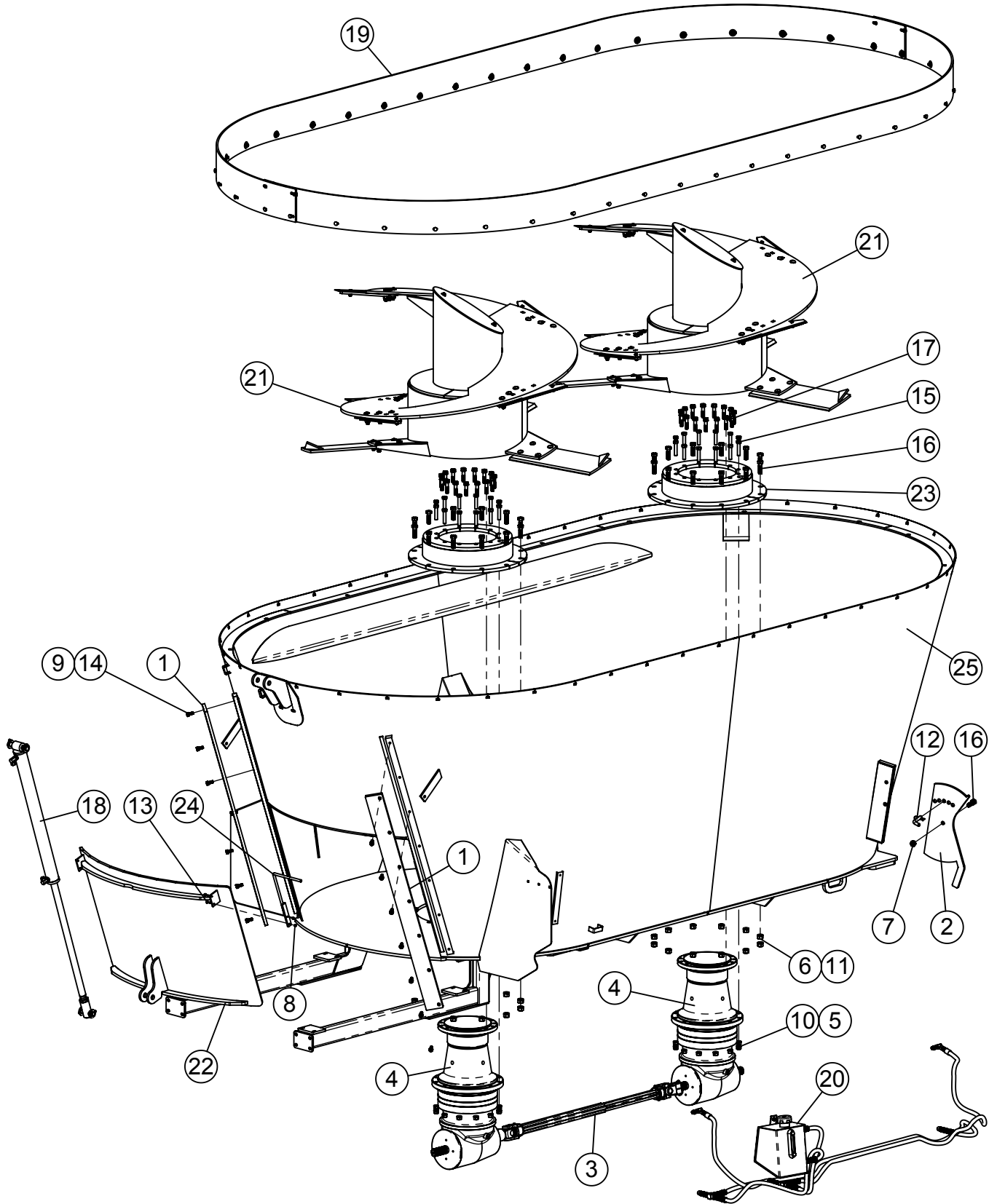


REPAIR PARTS

TABLE OF CONTENTS

DESCRIPTION	PAGE NO.
TRUCK VERTICAL MIXER ASSEMBLY	28-29
AUGER ASSEMBLY	30
GEARBOX RESERVOIR KIT	31
625 GEARBOX TO GEARBOX DRIVELINE	32
DOOR CYLINDER & RUBBER EXTENSION	33
625 TRUCK PLATFORM ASSEMBLY	34-35
625 TRUCK FLAT CONVEYOR ASSEMBLY	36-39
625 TRUCK DOGLEG CONVEYOR ASSMBLY	40-43
625 CONVEYOR SPOUT ASSEMBLY	44-45
625 CONVEYOR RUBBER FLAP KIT	46
625 TRUCK SCALE FRAME ASSEMBLY	47
625 TRUCK FRONT PTO HYDRAULIC DRIVE KIT	48-49
625 TRUCK HYDRAULIC RESERVOIR ASSEMBLY	50-51
625 TRUCK REAR PTO HYDRAULIC DRIVE KIT	52-53
625 TRUCK CONVEYOR & DISCHARGE DOOR HYDRAULIC CONTROLS...	54-55
TRUCK DRIVELINE ASSEMBLIES	56
TRUCK HYDROSTAT ELECTRIC & MANUAL CONTROL	57
JOYSTICK.....	58
JOYSTICK SWITCH PANEL ASSEMBLY.....	59
TRUCK CAB SCALE INDICATOR FRAME PARTS.....	60
TRUCK FENDERS & BUMPERS.....	61

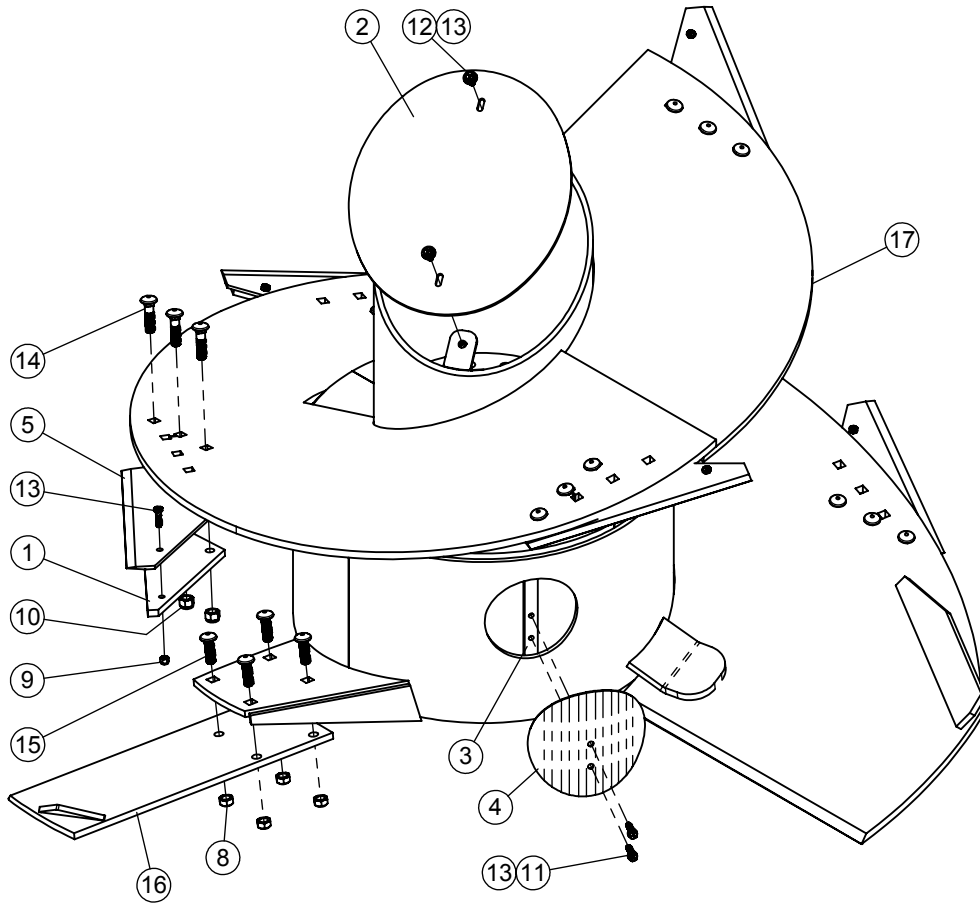
625 TRUCK VERTICAL ASSEMBLY



625 TRUCK VERTICAL ASSEMBLY

ITEM #	PART #	DESCRIPTION	QTY.
1	160115	DOOR GUIDE BAR	2
2	161086	325/425 TUB KNIFE	2
3	338059	DRV SHAFT W2400 1-3/4" 20T x 1-3/4" 20T	1
4	344158	TEE - GEARBOX RR 35.83:1	2
5	400210	HEX NUT 5/8"-11 #5 PLTD	24
6	400212	HEX NUT 3/4"-10 #5 PLTD	24
7	400912	HEX CROWN LOCK NUT 3/4"-10 #5 PLTD	2
8	401104	HEX NUT, NYLOC 1/4"-20 #5 PLTD	2
9	402008	SPRING LOCK WASHER 1/2" PLTD	14
10	402010	SPRING LOCK WASHER 5/8" PLTD	54
11	402012	SPRING LOCK WASHER 3/4" PLTD	24
12	404209	PIN, 5/8" x 4", RECEIVER HITCH	2
13	405604	HHCS 1/4"-20 x 1" #5 PLTD	2
14	405702	HHCS 1/2"-13 x 1-1/4" #5 PLTD	14
15	405758	HHCS 5/8"-11 x 3" #5 PLTD	24
16	405781	HHCS 3/4"-10 x 2-1/2" #5 PLTD	26
17	407817	HHCS M16 x 70MM GRADE 10.9	30
18	660059	SINGLE CYL DISCH DOOR HYD KIT, (breakdown on Pg 33)	1
19	660274	625 RUBBER EXTENSION KIT, (breakdown on Pg 33)	1
20	660414	625 GEARBOX RESERVOIR KIT, (breakdown on Pg 33)	1
21	760600	625 TRL AUGER ASSEMBLY	2
22	860578	VERT FRONT CENTER DOOR WA 48 W	1
23	860591	GEAR BOX FLANGE WA, 745/865-(42W CONV)	2
24	860636	VERTICAL MIXER DOOR MARKER	1
25	860792	625 TRUCK SHELL WA	1

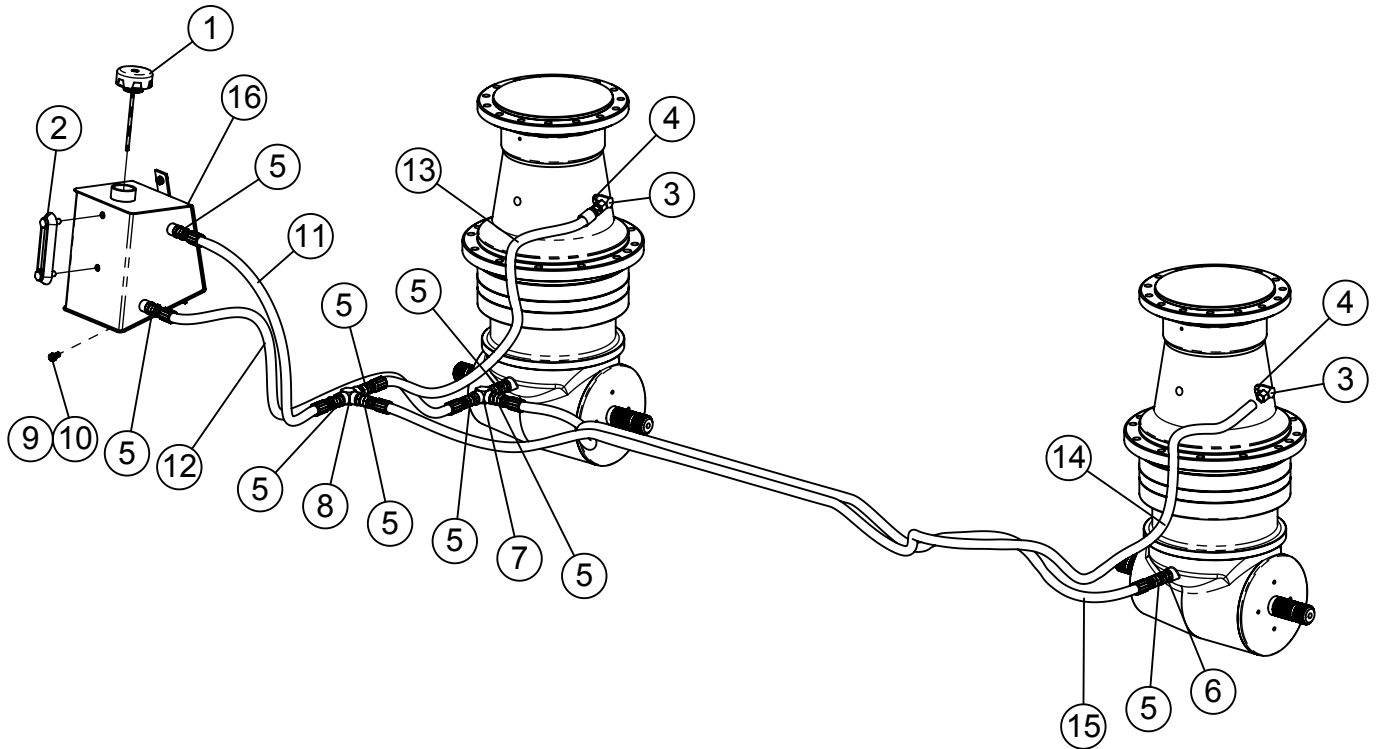
625 AUGER ASSEMBLY



ITEM #	PART #	DESCRIPTION	QTY.
1	160076	KNIFE BACKUP PLATE RH, 5 13/16" x 16 3/8"	5
2	161100	AUGER TUBE CAP 16-1/4" x 19-5/16"	1
3	161290	AUGER COVER BOLT BAR 3/8 x 1 x 8	1
4	161298	AUGER ACCESS COVER - 7" OD	1
5	385007	KNIFE BLADE 7 1/2" x 17 1/4"	5
-	385008	CARBIDE KNIFE BLADE 7 1/2" x 17 1/4"	AN
-	385017	AGGRESSIVE KNIFE BLADE 7 1/2" x 21"	AN
8	400910	HEX CROWN LOCNUT 5/8"-11 #9 PLTD	8
9	401106	HEX NUT, 3/8"-16 NYLOC #5 PLTD	5
10	401110	HEX NYLOC NUT 5/8"-11 #5 Pltd	15
11	402006	WASHER SPRING LOCK 3/8" MED PLTD	4
12	402406	FLAT WASHER 3/8" PLTD	2
13	405654	HHCS 3/8"-16 x 1-1/4" #5 PLTD	9
14	407122	CHCS 5/8"-11 x 2-1/2" #5 Pltd	15
15	407130	CHCS 5/8"-11 x 2" #8 PLTD	8
16	860686	VX AUGER WING KICKER W.A.	2
17	860721	625 AUGER WELDMENT (GEARBOX)	1

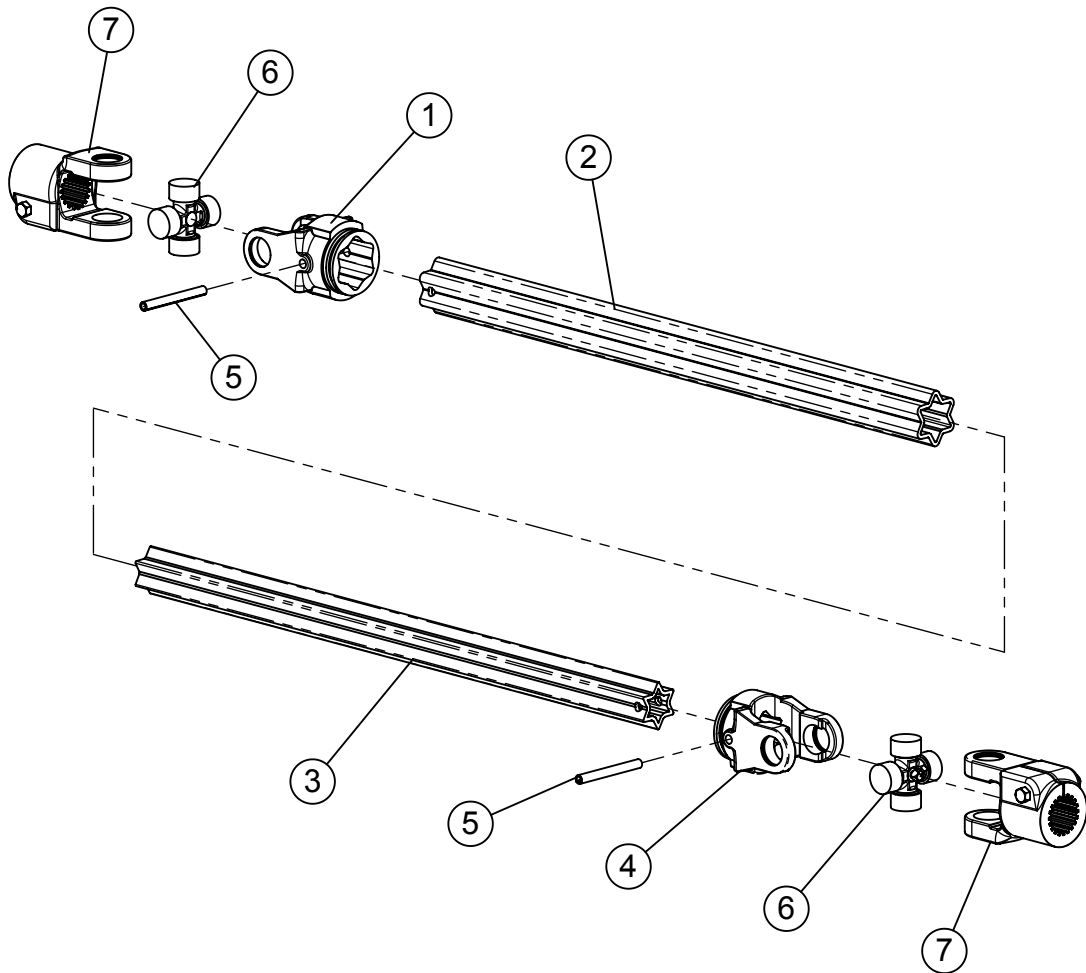
AN = As Needed

625 GEARBOX RESERVOIR KIT



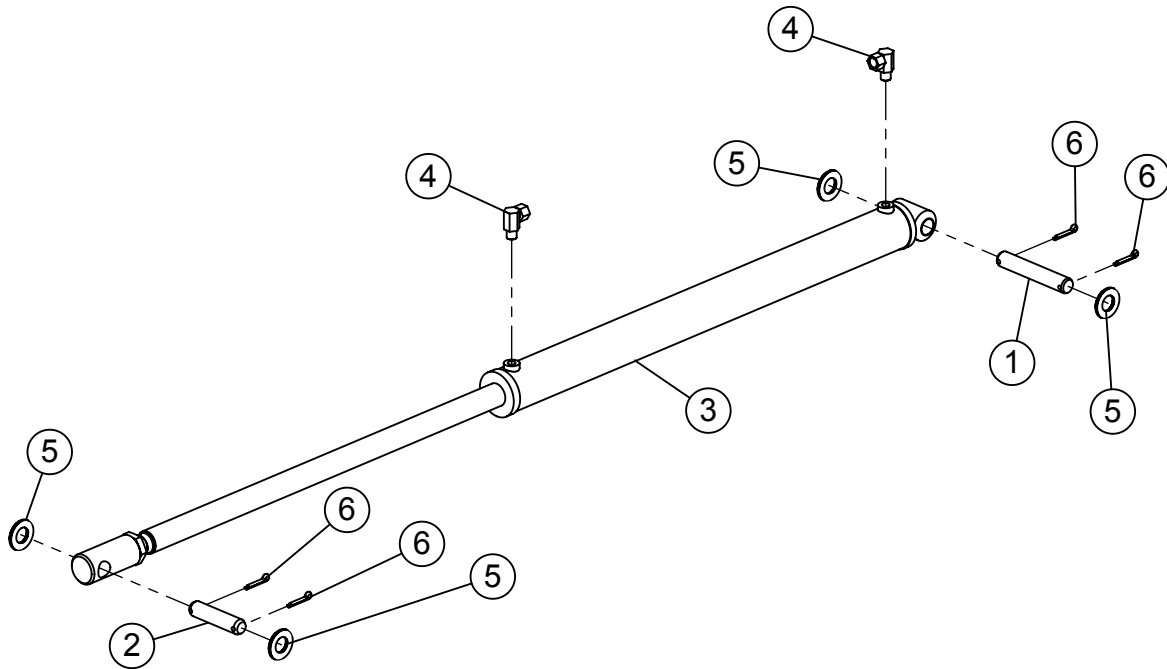
ITEM #	PART #	DESCRIPTION	QTY.
1	362549	TANK BREATHER 8" DIP STICK	1
2	362555	SIGHT GAUGE 5"	1
3	368020	HYD ADAPTER 3/8"MP x 3/8"FPX 90°	2
4	368108	HYD ADAPTER STR 3/8"MBPP x 3/8"FP	2
5	368111	STRAIGHT ADAPTER 1/2" x 1/2"FP SWIVEL	9
6	368218	STRAIGHT ADAPT 1/2BSPP x 1/2FP SWIVEL	2
7	368608	STREET TEE 1/2"MP x 1/2"FP x 1/2"FP	1
8	368609	TEE 1/2"FP x 1/2"FP x 1/2"FP	1
9	402006	WASHER SPRING LOCK 3/8" MED PLTD	2
10	405652	HHCS 3/8"-16 x 3/4" #5 PLTD	2
11	781343	1/2 x 48 HOSE ASM 1/2MP	1
12	781597	1/2 x 54 HOSE ASM 1/2MP	1
13	781818	1/2 x 25 HOSE ASM 1/2MP x 3/8MP	1
14	781819	1/2 x 115 HOSE ASM 1/2MP x 3/8MP	1
15	781895	1/2 x 99 HOSE ASM 1/2MP	1
16	860064	GEARBOX RESERVOIR WA	1

625 GEARBOX TO GEARBOX DRIVELINE #338059

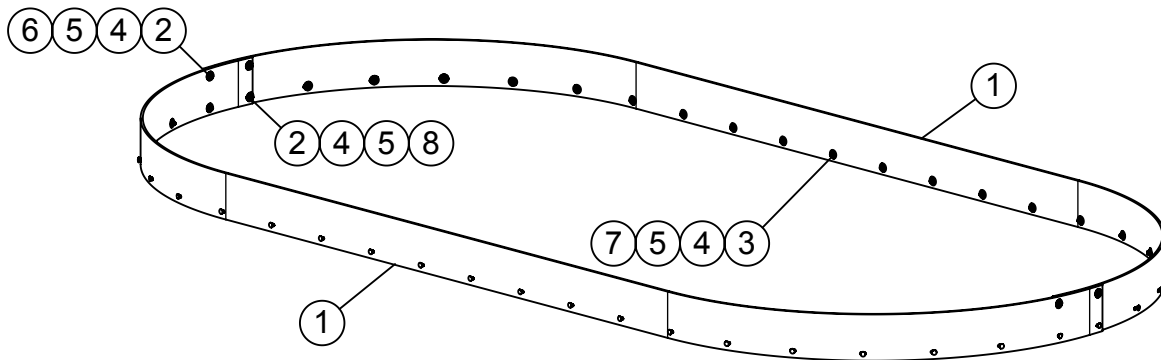


ITEM #	PART #	DESCRIPTION	QTY.
1	338452	INBOARD YOKE S5 W2400 356906	1
2	338619	OUTER PROFILE S5L W2500 381892	1
3	338618	INNER PROFILE S4 W2500 333874	1
4	338450	INBOARD YOKE W2400 S4 356905	1
5	338473	ROLL DRIVE PIN W LTSH 10MM x 90MM	2
6	338443	CROSS KIT 32mm x 76mm W2400	2
7	338612	YOKE 1-3/4" 20 SPLINE W2400 331053	2

625 DOOR CYLINDER & RUBBER EXTENSION

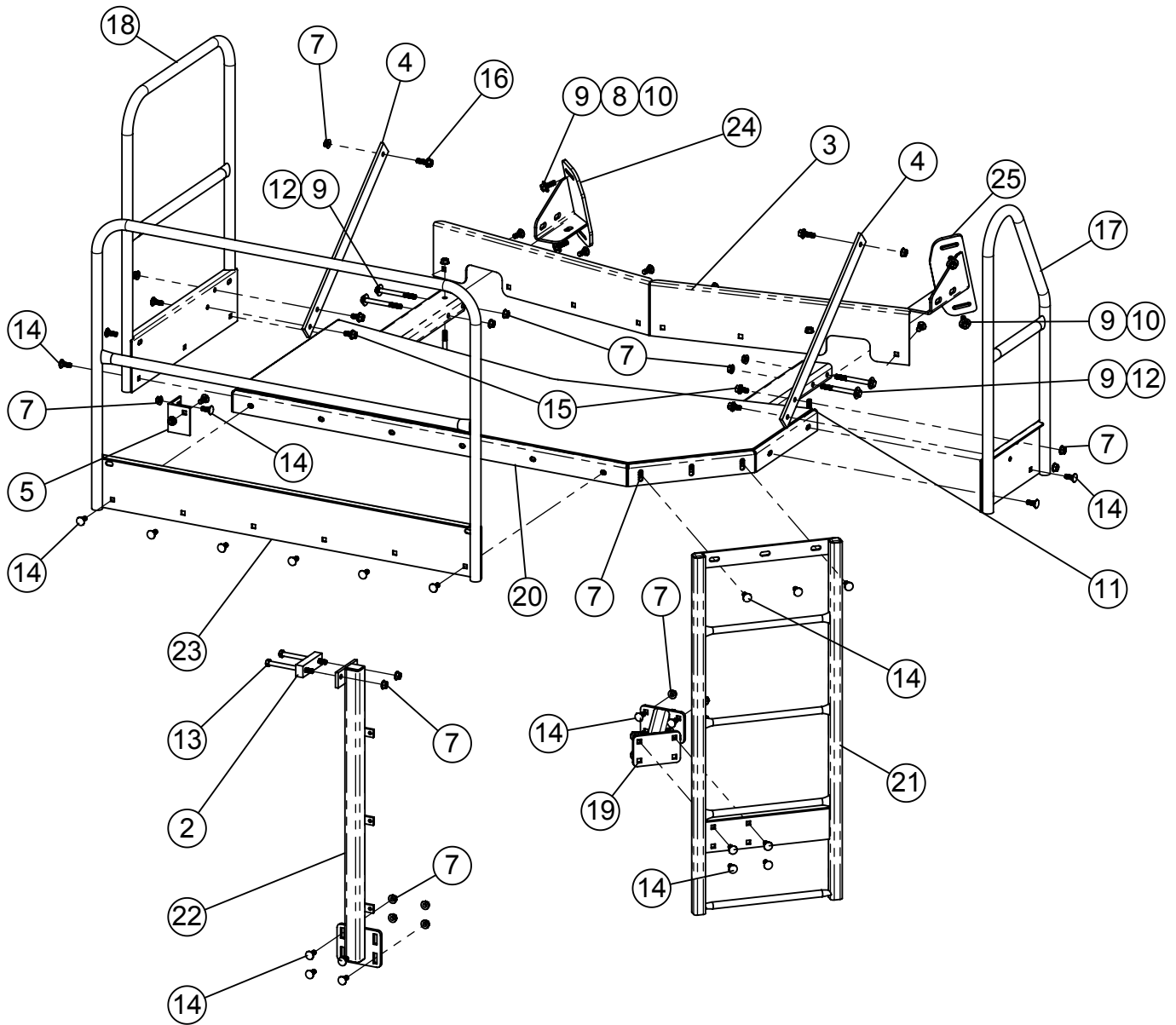


ITEM #	PART #	DESCRIPTION	QTY.
1	160619	CYLINDER PIN 5 7/8"	1
2	160620	CYLINDER PIN 1" x 4 1/4"	1
3	364079	CYL. 2-1/2" BORE x 1-1/2" ROD x 30-1/4" STROKE	1
4	368007	HYDRAULIC ADAPTER 3/8"MP x 3/8"FPX 90° .109 orifice	2
5	402516	FLAT WASHER, 1" SAE	4
6	404000	COTTER PIN 1/4" x 1 1/2"	4



ITEM #	PART #	DESCRIPTION	QTY.
1	161300	625 RUBBER EXT. END	2
2	401106	HEX NUT, 3/8"-16 NYLOC #5 PLTD	4
3	401106	HEX NUT, 3/8"-16 NYLOC #5 PLTD	44
4	402406	FLAT WASHER 3/8" PLTD	52
5	402606	FENDER WASHER 3/8" x 1 1/2" PLTD	52
6	405655	HHCS 3/8"-16 x 1 1/2" #5 PLTD	4
7	407041	CHCS 3/8"-16 x 1-1/4" #5 PLTD	40
8	407042	CHCS 3/8"-16 x 1-1/2" #5 PLTD	4

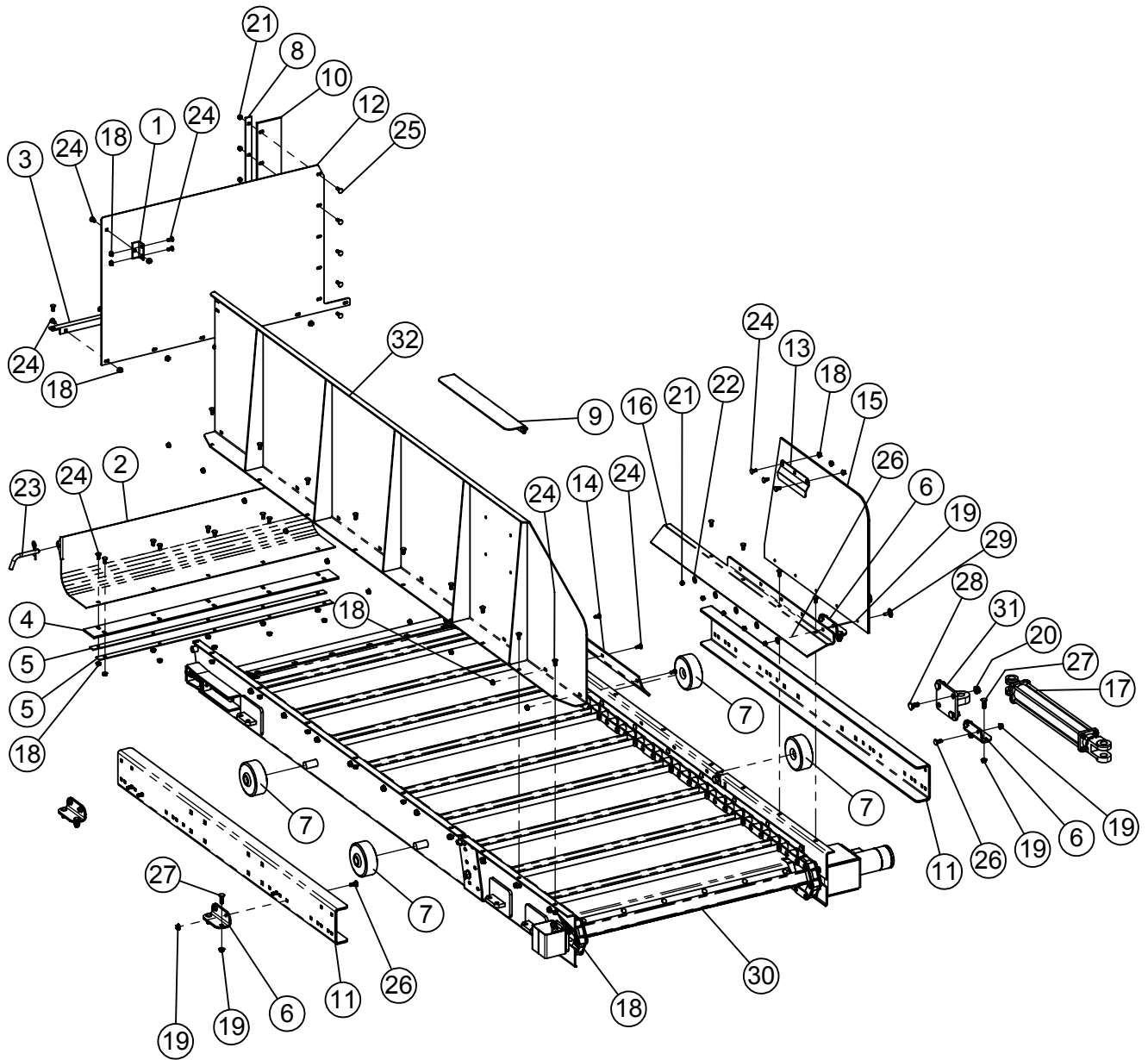
625 TRUCK PLATFORM ASSEMBLY



625 TRUCK PLATFORM ASSEMBLY

ITEM #	PART #	DESCRIPTION	QTY.
1	161908	KICKBOARD RH REAR	1
2	161926	SPACER PLATE	1
3	162071	KICKBOARD LH REAR	1
4	162285	PLATFORM SUPPORT BAR - 745	2
5	162881	PLATFORM SUPPORT ANGLE x 3-5/8	1
6	310954	CAPLUG-RIBBED-SQ 1-1/4" x 1.175"	2
7	400114	HEX NUT, 1/2-13 SERRATED FLANGE #5	50
8	402008	SPRING LOCK WASHER 1/2" PLTD	4
9	402408	FLAT WASHER 1/2" MED PLTD	10
10	405703	HHCS 1/2"-13 x 1-1/2" #5 PLTD	4
11	405709	HHCS 1/2"-13 x 3" #5 PLTD	2
12	405715	HHCS 1/2"-13 x 5" #5 PLTD	4
13	405717	HHCS 1/2"-13 x 6" #5 PLTD	2
14	407101	CHCS 1/2"-13 x 1-1/4" #5 PLTD	36
15	407911	HHCS SERRATED 1/2"-13 x 1" #5 PLTD	4
16	407913	HHCS 1/2"-13 x 1-1/2" SERRATED #5 PLTD	2
17	860544	HANDRAIL LH	1
18	860545	RH HANDRAIL	1
19	860549	PLATFORM MOUNT WA - VERT	1
20	860566	PLATFORM WA 745	1
21	860568	LADDER WA 625/745	1
22	860571	PLATFORM SUPPORT TUBE WA	1
23	860580	FRONT HANDRAIL WA TRUCK	1
24	860785	FRONT RH PLATFORM SUPPORT - 625	1
25	860786	FRONT LH PLATFORM SUPPORT - 625	1

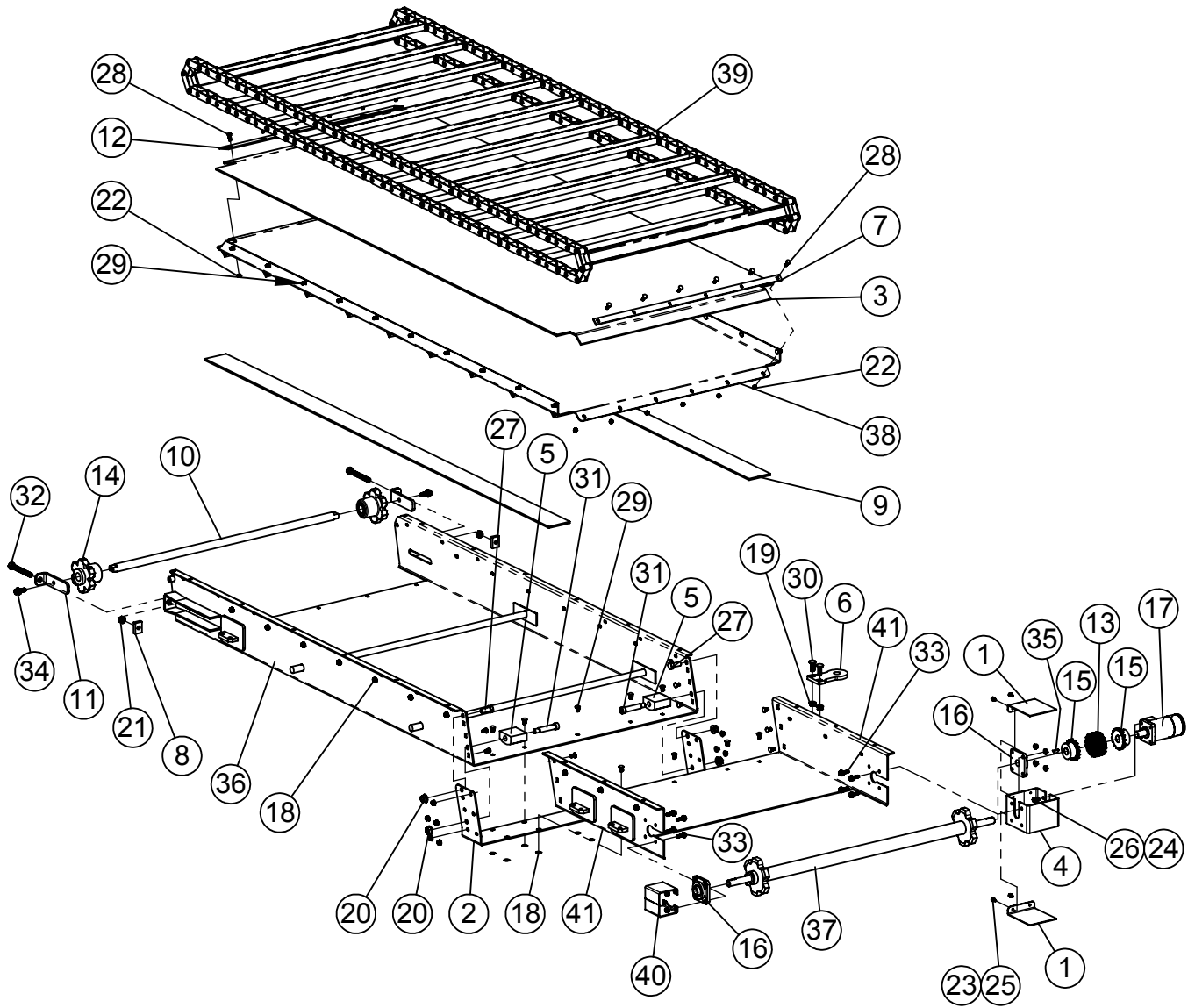
625 TRUCK FLAT CONVEYOR (#660388)



625 TRUCK FLAT CONVEYOR (#660388)

ITEM #	PART #	DESCRIPTION	QTY.
1	161383	MOUNT ANGLE	1
2	161784	CLEANOUT DOOR 42"W CONVEYOR	1
3	161786	CONVEYOR MOUNT ANGLE	1
4	161787	RUBBER HINGE 42"W CONVEYOR	1
5	161788	HINGE STRAP 42"W CONVEYOR	2
6	161810	RAIL BOLT PLATE	4
7	161811	CONVEYOR SLIDE ROLLER	4
8	161867	RUBBER SUPPORT PLATE	1
9	161874	CONVEYOR FLAT FILL PLATE	1
10	161875	RUBBER CONVEYOR SIDE FILLER	1
11	161934	CONVEYOR SLIDE RAIL FLAT & DOGLEG	2
12	161965	CONVEYOR LH SIDE SHIELD	1
13	162069	OFFSET BRACKET	1
14	162713	FRONT CONVEYOR PLASTIC - VERT 42W	1
15	162760	TRK FLAT CONV PLASTIC FILLER	1
16	162761	FLAT CONVEYOR CHAIN COVER - TRK	1
17	364060	HYDRAULIC CYLINDER 2" x 16" 26-1/4" CC	1
18	400106	HEX NUT, 5/16"-18 SER. FLANGE #5 PLTD	50
19	400107	HEX NUT, 3/8"-16 SERRATED FLANGE #5	16
20	400114	HEX NUT, 1/2"-13 SERRATED FLANGE #5	4
21	401105	HEX NUT, 5/16"-18 NYLOC #5 PLTD	10
22	402405	FLAT WASHER 5/16" MED PLTD	5
23	404214	PIN, 1/2" x 3",RECEIVER HITCH	2
24	407020	CHCS 5/16"-18 x 3/4" #5 PLTD	50
25	407021	CHCS 5/16"-18 x 1" #5 PLTD	5
26	407040	CHCS 3/8"-16 x 1" #5 PLTD	8
27	407041	CHCS 3/8"-16 x 1-1/4" #5 PLTD	8
28	407101	CHCS 1/2"-13 x 1-1/4" #5 PLTD	4
29	407311	ELEV BOLT, 5/16 x 1	5
30	760171	VERTICAL CONVEYOR ASSY FLAT SLIDING	1
31	860529	SLIDE CYLINDER LUG WA	1
32	860799	CONVEYOR FRONT SHIELD WA - TRK	1

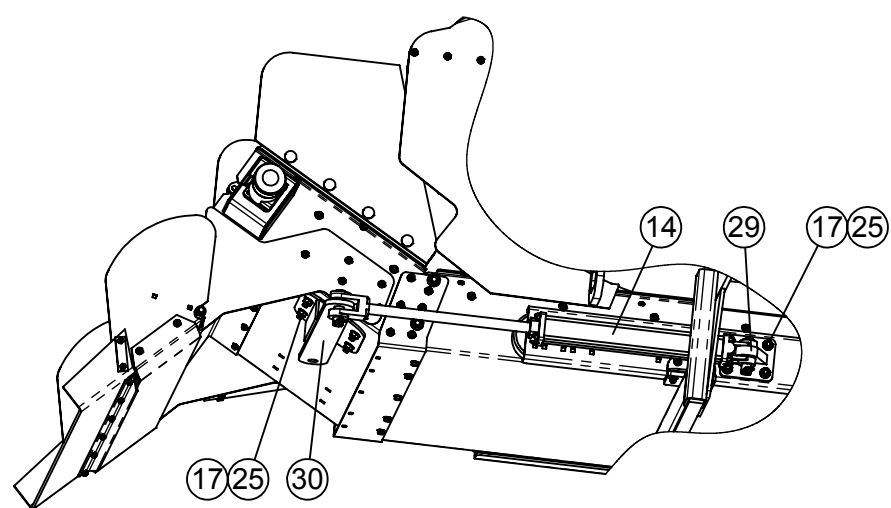
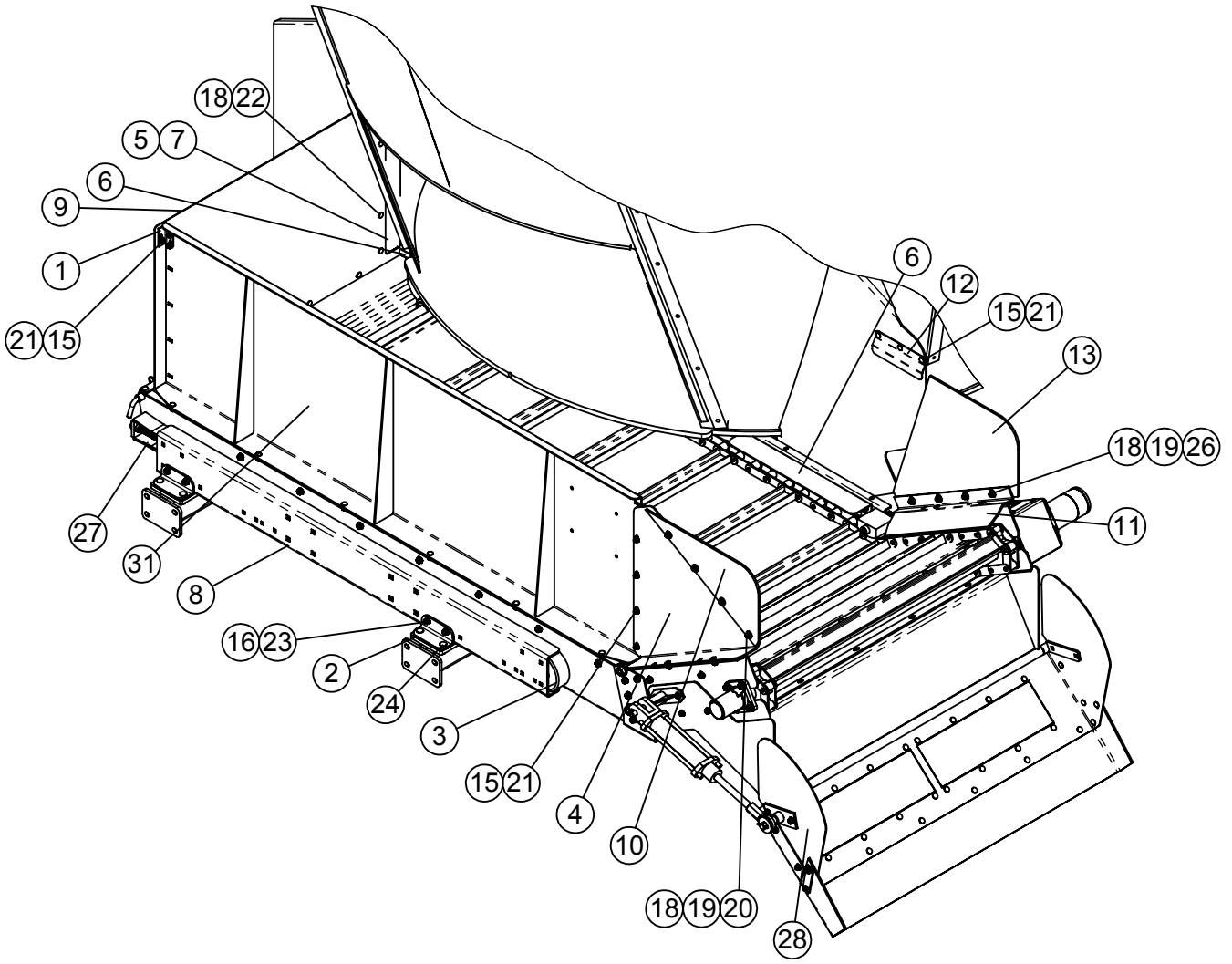
625 TRUCK FLAT CONVEYOR (#760171)



625 TRUCK FLAT CONVEYOR (#760171)

ITEM #	PART #	DESCRIPTION	QTY.
1	161774	DRIVE CHAIN COVER	2
2	161777	CONVEYOR BOLT PLATE	1
3	161780	PLASTIC LINER FLAT CONV	1
4	161783	MOTOR MOUNT TUBE	1
5	161830	CONVEYOR CHAIN HOLD DOWN	2
6	161940	SLIDE CYLINDER BOLT-ON LUG	1
7	162026	PLASTIC STRAP	1
8	162087	TAPPED TENSIONER BAR	2
9	162094	PLASTIC GLIDE 42"W FLAT CONVEYOR	2
10	162495	42W CONV IDLER SHAFT	1
11	162664	TENSION BRACKET - IDLER SPROCKET	2
12	162718	PLASTIC STRAP - FLAT CONV	1
13	320516	COUPLER CHAIN #50-2 RC x 16	1
14	330016	SPROCKET 81X 6-TOOTH NYLOIL INSERT	2
15	332606	COUPLER SPROCKET, 50B16 x 1"	2
16	340316	FLANGE BEARING 1" 4 BOLT RCJC	2
17	360015	HYDRAULIC MOTOR 17.9 CU IN.	1
18	400107	HEX NUT, 3/8"-16 SERRATED FLANGE #5	48
19	400114	HEX NUT, 1/2-13 SERRATED FLANGE #5	2
20	400115	HEX NUT, 5/8"-11 SER. FLANGE #5 PLTD	4
21	400610	HEX JAM NUT, 5/8"-11 #5 PLTD	2
22	401105	HEX NUT, 5/16"-18 NYLOC #5 PLTD	12
23	402004	WASHER, SPRING LOCK 1/4" PLTD	4
24	402106	EXTERNAL STAR LOCKWASHER 3/8"	4
25	405601	HHCS 1/4"-20 x 5/8" USS #5 PLTD.	4
26	405652	HHCS 3/8"-16 x 3/4" #5 PLTD	4
27	405752	HHCS, 5/8"-11 x 1-1/2" #5 PLTD	2
28	407021	CHCS 5/16"-18 x 1" #5 PLTD	12
29	407039	CHCS 3/8"-16 x 3/4" #5 PLTD	40
30	407102	CHCS 1/2"-13 x 1-1/2" #5 PLTD	2
31	407411	SHOULDER BOLT, 5/8"-11 x 3/4" DIA x 3" LG	2
32	407476	HHCS 5/8"-11 x 5" FULL THREAD #5 PLTD	2
33	407904	HHCS 3/8"-16 x 1-1/4" SERRATED #5 PLTD	8
34	407912	HHCS 1/2"-13 x 1-1/4" SERRATED #5 PLTD	2
35	409916	WOODRUFF KEY 1/4" x 1"	1
36	860512	BASE CONVEYOR WA 42" WIDE	1
37	860513	CONVEYOR DRIVE SHAFT 42"W	1
38	860516	CONVEYOR PAN WA	1
39	860517	81X CONVEYOR CHAIN WA 42" x 82P	1
40	860538	SHAFT COVER WA	1
41	860565	FLAT CONVEYOR EXTENSION WA	1

625 TRUCK DOGLEG CONVEYOR ASSEMBLY (#660255)

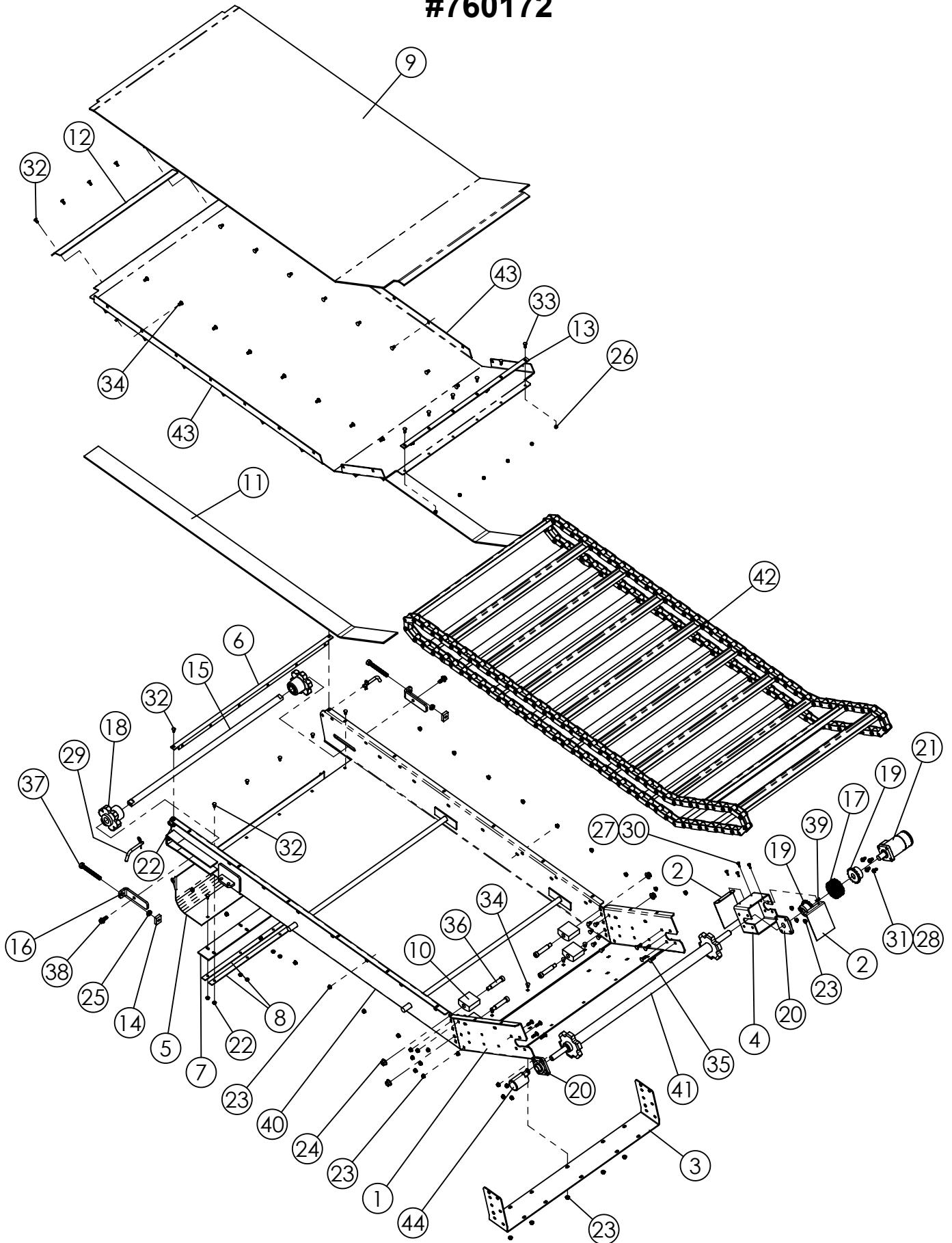


LOOKING UP FROM THE BOTTOM OF THE CONVEYOR

625 TRUCK DOGLEG CONVEYOR ASSEMBLY (#660255)

ITEM #	PART #	DESCRIPTION	QTY.
1	161383	MOUNT ANGLE	1
2	161810	RAIL BOLT PLATE	4
3	161811	CONVEYOR SLIDE ROLLER	4
4	161818	DOGLEG EXTENSION SHIELD	1
5	161867	RUBBER SUPPORT PLATE	1
6	161874	CONVEYOR FLAT FILL PLATE	2
7	161875	RUBBER CONVEYOR SIDE FILLER	1
8	161934	CONVEYOR SLIDE RAIL FLAT & DOGLEG	2
9	161965	CONVEYOR LH SIDE SHIELD	1
10	162038	FRONT PLASTIC EXTENSION	1
11	162066	DOGLEG CONVEYOR CHAIN COVER	1
12	162069	OFFSET BRACKET	1
13	162115	TRK DOGLEG CONVEYOR PLASTIC FILLER	1
14	364060	HYDRAULIC CYLINDER 2" x 16" 26-1/4" CC	1
15	400106	HEX NUT, 5/16"-18 SER. FLANGE #5 PLTD	29
16	400107	HEX NUT, 3/8"-16 SERRATED FLANGE #5	16
17	400114	HEX NUT, 1/2"-13 SERRATED FLANGE #5	8
18	401105	HEX NUT, 5/16"-18 NYLOC #5 PLTD	13
19	402405	FLAT WASHER 5/16" MED PLTD	12
20	405628	HHCS 5/16"-18 x 1" #5 PLTD	4
21	407020	CHCS 5/16"-18 x 3/4" #5 PLTD	29
22	407021	CHCS 5/16"-18 x 1" #5 PLTD	5
23	407040	CHCS 3/8"-16 x 1" #5 PLTD	8
24	407041	CHCS 3/8"-16 x 1-1/4" #5 PLTD	8
25	407101	CHCS 1/2"-13 x 1-1/4" #5 PLTD	8
26	407311	ELEV BOLT, 5/16 x 1	4
27	760172	VERT CONV ASSY - DOGLEG SLIDE	1
28	760177	42W SPOUT ASSY - DOGLEG COV	1
29	860529	SLIDE CYLINDER LUG WA	1
30	860552	DOGLEG CYLINDER MOUNT WA	1
31	860572	CONVEYOR FRONT SHIELD WA	1

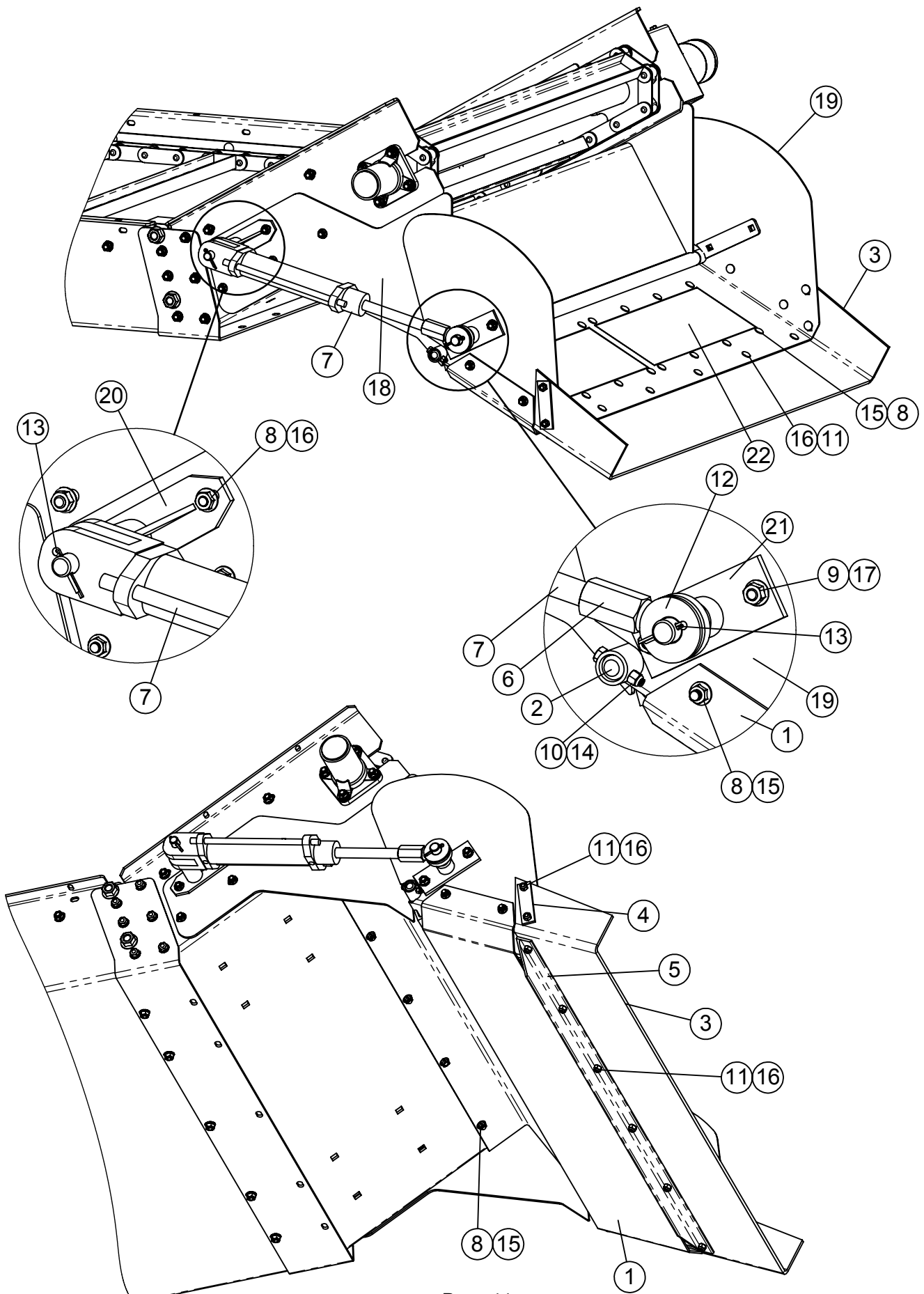
625 TRUCK DOGLEG CONVEYOR, SLIDE ASSEMBLY #760172



625 TRUCK DOGLEG CONVEYOR, SLIDE ASSEMBLY #760172

ITEM #	PART #	DESCRIPTION	QTY.
1	161762	DOGLEG EXTENSION BOLT-ON	1
2	161774	DRIVE CHAIN COVER	2
3	161777	CONVEYOR BOLT PLATE	1
4	161783	MOTOR MOUNT TUBE	1
5	161784	CLEANOUT DOOR 42"W CONVEYOR	1
6	161786	CONVEYOR MOUNT ANGLE	1
7	161787	RUBBER HINGE 42"W CONVEYOR	1
8	161788	HINGE STRAP 42"W CONVEYOR	2
9	161789	PLASTIC LINER 42"W DOGLEG CONVEYOR	1
10	161830	CONVEYOR CHAIN HOLD DOWN	4
11	162022	PLASTIC GLIDE 42"W DOGLEG CONVEYOR	2
12	162024	PLASTIC LINER HOLD DOWN STRAP	1
13	162026	PLASTIC STRAP	1
14	162087	TAPPED TENSIONER BAR	2
15	162495	42W CONV IDLER SHAFT	1
16	162664	TENSION BRACKET - IDLER SPROCKET	2
17	320516	COUPLER CHAIN #50-2 RC x 16	1
18	330016	SPROCKET 81X 6-TOOTH NYLOIL INSERT	2
19	332606	COUPLER SPROCKET, 50B16 x 1"	2
20	340316	FLANGE BEARING 1" 4 BOLT RCJC	2
21	360015	HYDRAULIC MOTOR 17.9 CU IN.	1
22	400106	HEX NUT, 5/16"-18 SER. FLANGE #5 PLTD	17
23	400107	HEX NUT, 3/8"-16 SERRATED FLANGE #5	43
24	400115	HEX NUT, 5/8"-11 SER. FLANGE #5 PLTD	4
25	400610	HEX JAM NUT, 5/8"-11 #5 PLTD	2
26	401105	HEX NUT, 5/16"-18 NYLOC #5 PLTD	6
27	402004	SPRING LOCK WASHER 1/4" PLTD	4
28	402106	EXTERNAL STAR LOCKWASHER 3/8"	4
29	404214	PIN, 1/2" x 3",RECEIVER HITCH	2
30	405602	HHCS 1/4" -20 x 3/4" USS #5 PLTD.	4
31	405652	HHCS 3/8"-16 x 3/4" #5 PLTD	4
32	407020	CHCS 5/16"-18 x 3/4" #5 PLTD	17
33	407021	CHCS 5/16"-18 x 1" #5 PLTD	6
34	407039	CHCS 3/8"-16 x 3/4" #5 PLTD	35
35	407041	CHCS 3/8"-16 x 1-1/4" #5 PLTD	8
36	407411	SHOULDER BOLT, 5/8"-11 x 3/4" DIA x 3" LG	4
37	407476	HHCS 5/8"-11 x 5" FULL THREAD #5 PLTD	2
38	407912	HHCS 1/2"-13 x 1-1/4" SERRATED #5 PLTD	2
39	409916	WOODRUFF KEY 1/4" x 1"	1
40	860512	BASE CONVEYOR WA 42" WIDE	1
41	860513	CONVEYOR DRIVE SHAFT 42"W	1
42	860520	81X CONVEYOR CHAIN WA 42" x 79P	1
43	860521	VERTICAL DOGLEG CONVEYOR PAN WA	1
44	860612	CONVEYOR SHAFT COVER WA	1

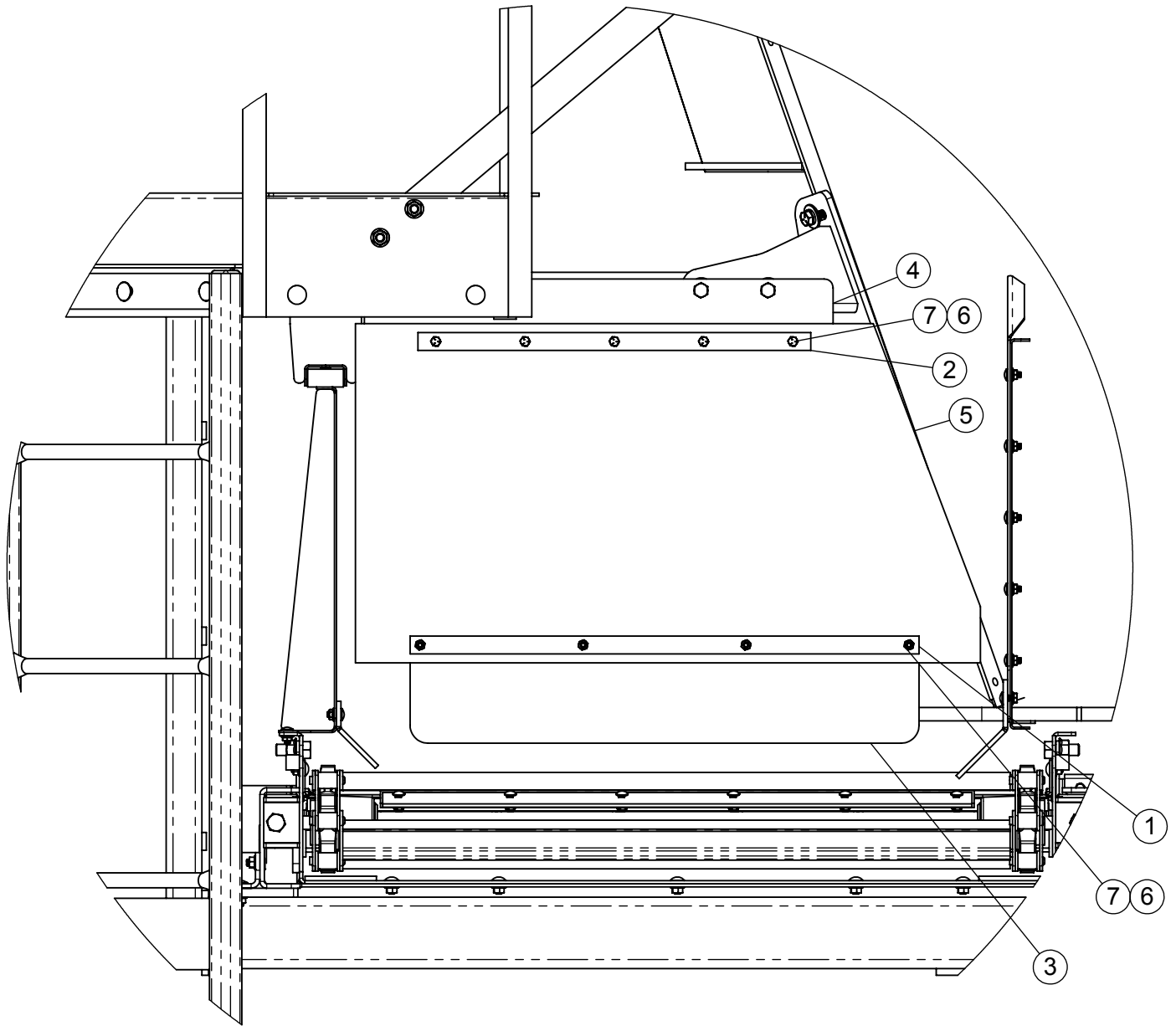
625 CONVEYOR SPOUT ASSEMBLY (#760177)



625 CONVEYOR SPOUT ASSEMBLY (#760177)

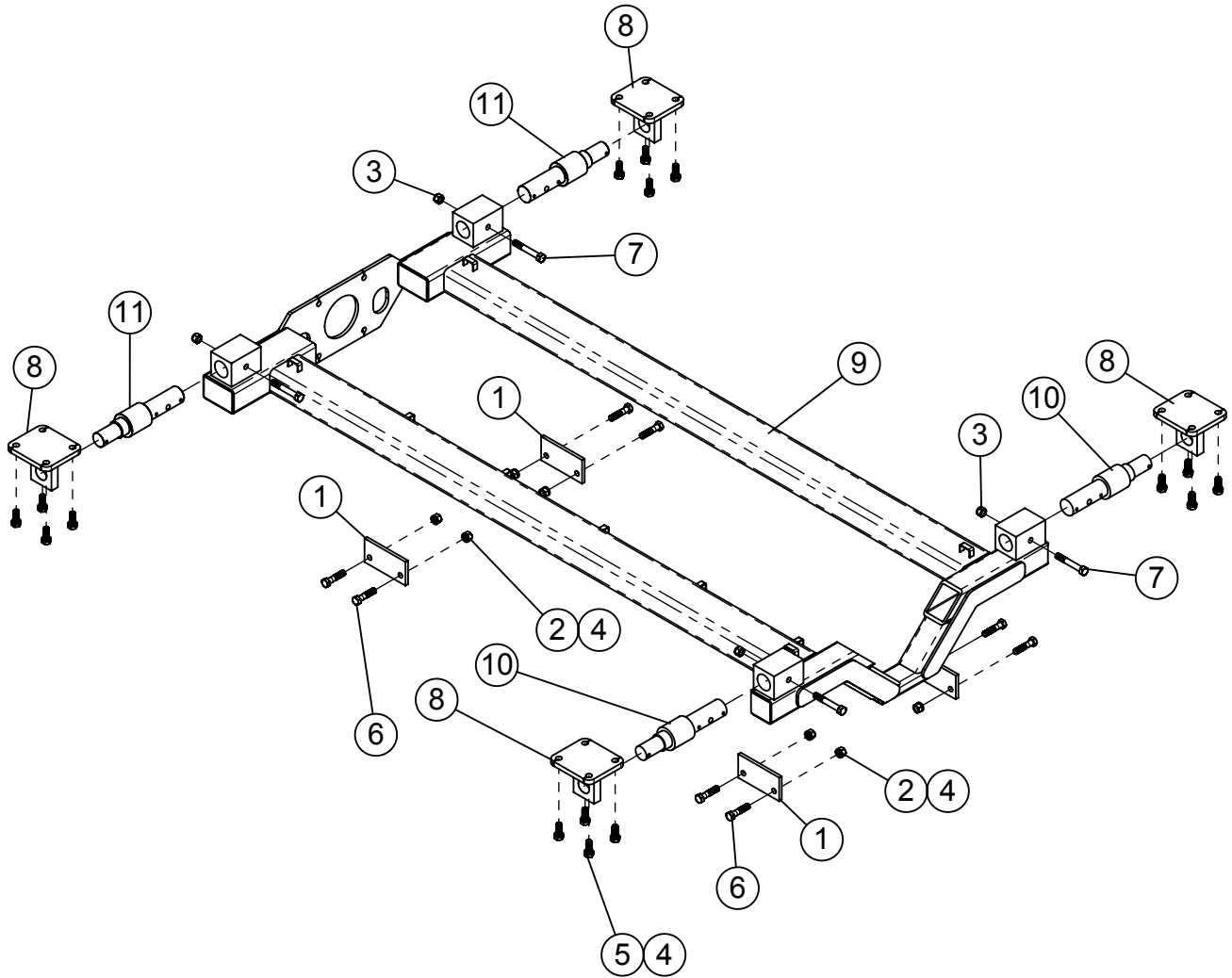
ITEM #	PART #	DESCRIPTION	QTY.
1	161975	SPOUT MAGNET GUARD	1
2	161976	PIVOT PIN 42"W CONVEYOR SPOUT	1
3	162047	SPOUT RUBBER 42"W CONV	1
4	162048	SPOUT RUBBER SIDE BAR	2
5	162049	SPOUT BACK UP ANGLE	1
6	192019P	SPOUT CYLINDER ROD END (DANUSER)	1
7	364036	HYDRAULIC CYLINDER 1-1/2" x 6" 15-1/4" C-C	1
8	400106	HEX NUT, 5/16"-18 SER. FLANGE #5 PLTD	35
9	400107	HEX NUT, 3/8"-16 SERRATED FLANGE #5	2
10	401104	HEX NUT, NYLOC 1/4"-20 #5 PLTD	1
11	401105	HEX NUT, 5/16"-18 NYLOC #5 PLTD	10
12	402412	FLAT WASHER 3/4" PLTD	1
13	404003	COTTER PIN, 5/32" x 1-1/4" PLTD	2
14	405606	HHCS 1/4"-20 x 1-1/2" #5 PLTD	1
15	407020	CHCS 5/16"-18 x 3/4" #5 PLTD	33
16	407021	CHCS 5/16"-18 x 1" #5 PLTD	12
17	407039	CHCS 3/8"-16 x 3/4" #5 PLTD	2
18	860573	SPOUT MOUNT WA	1
19	860574	CONVEYOR SPOUT WA 42"W	1
20	860589	SPOUT CYLINDER LUG WA (BARREL END)	1
21	860590	SPOUT CYLINDER LUG WA (ROD END)	1
22	W157293	MAGNET 30 OZ	2

625 CONVEYOR RUBBER FLAP KIT (#660369)



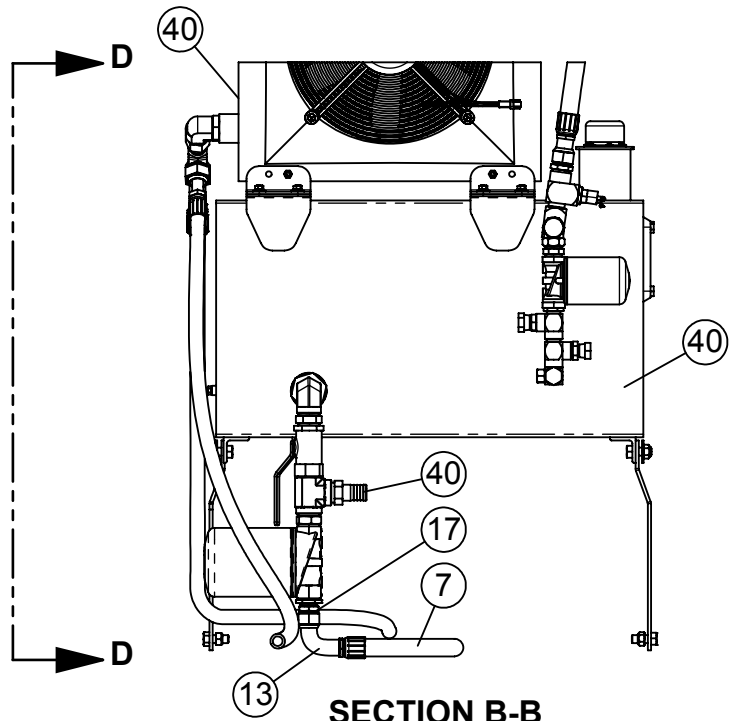
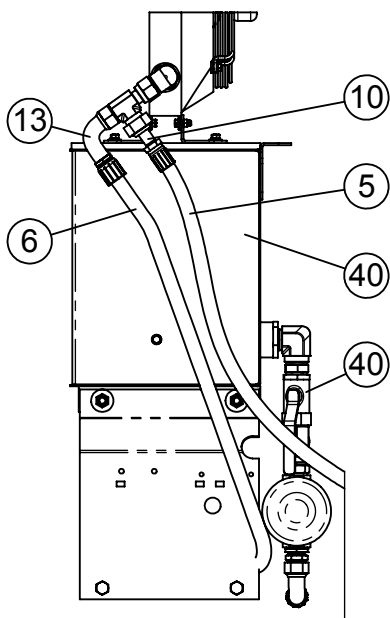
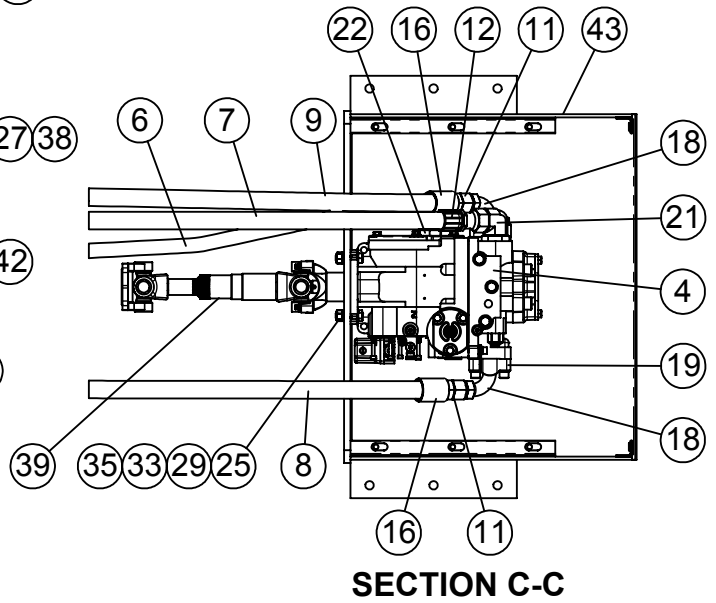
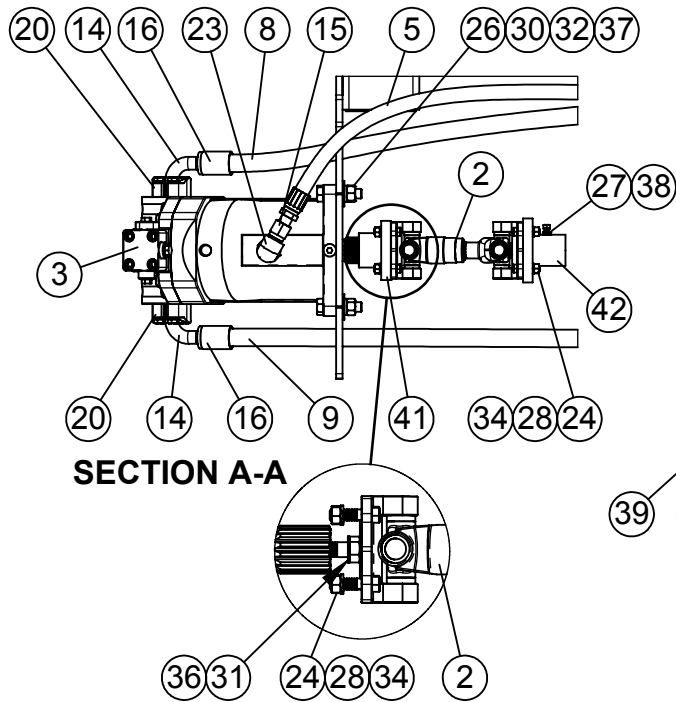
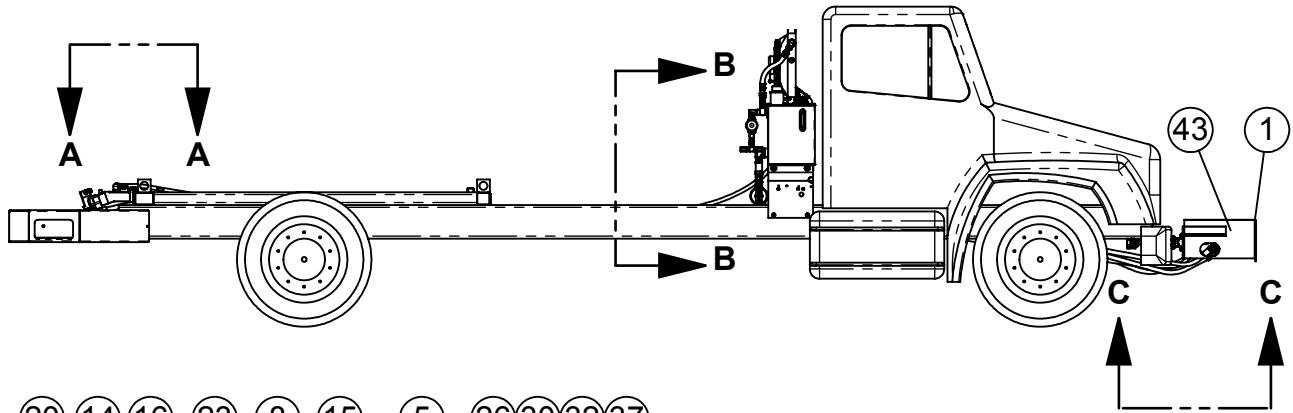
ITEM #	PART #	DESCRIPTION	QTY.
1	161509	STRAP	1
2	161867	RUBBER SUPPORT PLATE	1
3	162620	DEFLECTOR BOTTOM PLATE	1
4	162717	CONV RUBBER BOLT PLATE - 625-865	1
5	162719	CONVEYOR RUBBER FLAP - 625-865	1
6	401105	HEX NUT, 5/16"-18 NYLOC #5 PLTD	9
7	405628	HHCS 5/16"-18 x 1" #5 PLTD	9

625 TRUCK SCALE FRAME ASSEMBLY



ITEM #	PART #	DESCRIPTION	QTY.
1	182998	TRUCK FRAME BRACKET 8"	4
2	400212	HEX NUT 3/4"-10 #5 PLTD	8
3	401112	HEX NUT, 3/4"-10 NYLOC #5 PLTD	4
4	402012	SPRING LOCK WASHER 3/4" PLTD	24
5	405779	HHCS 3/4"-10 x 2" #5 PLTD	16
6	405784	3/4"-10 x 3-1/4" HHCS	8
7	405789	HHCS 3/4"-10 x 5" #5 PLTD	4
8	860426	WEIGH BAR MOUNT W.A. 2-1/2"	4
9	860794	2 1/2 SCALE BAR FRAME WA 625H	1
10	450824	WEIGH BAR 2-1/2", 21 FT CORD	2
11	450837	WEIGH BAR 2-1/2", 30FT CORD (BACK OF MIXER)	2

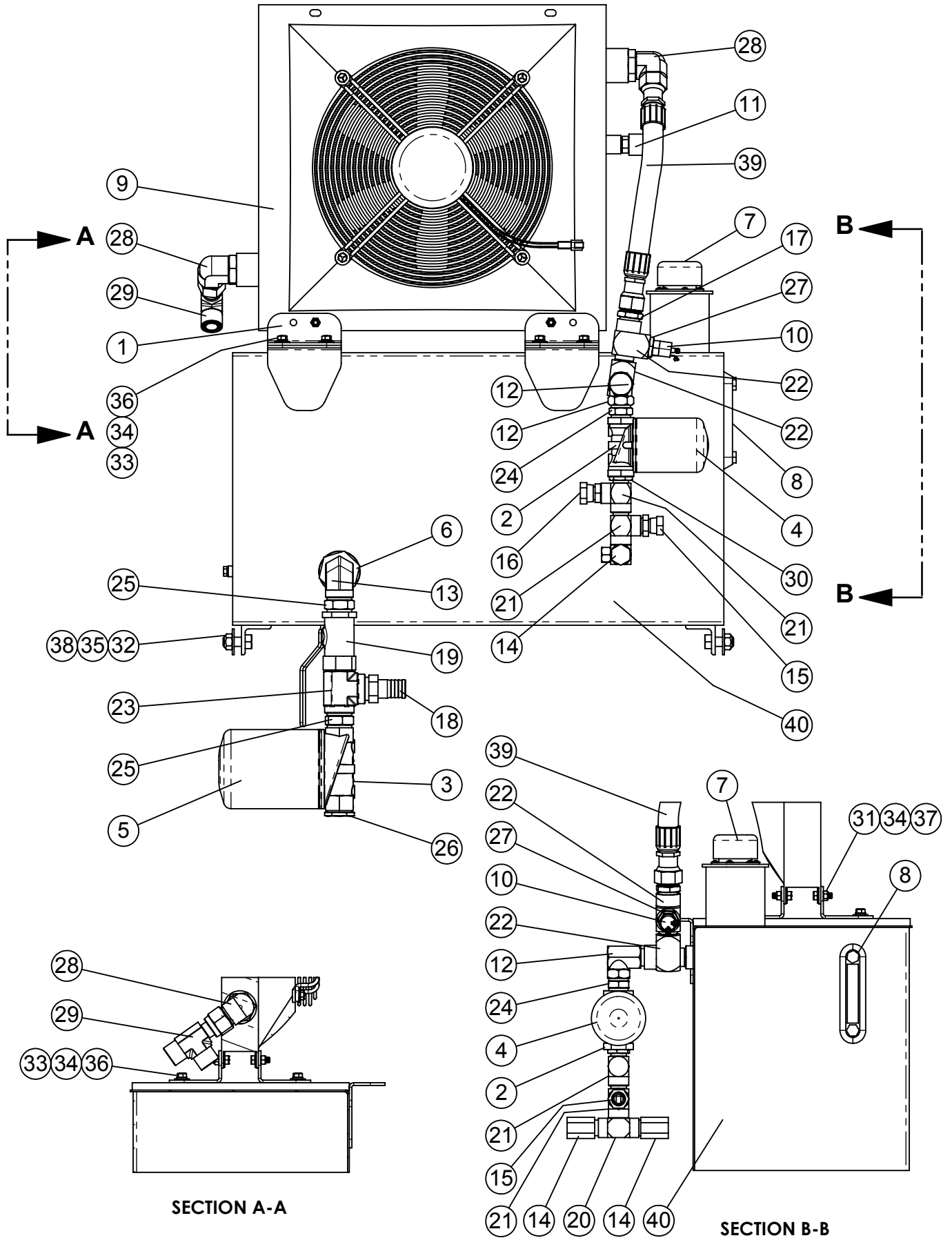
625 TRUCK FRONT PTO HYDRAULIC DRIVE KIT



625 TRUCK FRONT PTO HYDRAULIC DRIVE KIT

ITEM #	PART #	DESCRIPTION	QTY.
1	189216	LONG PUMP BOX COVER 22-1/4"	1
2	338007	DRIVE LINE ASSY 1410 5.35" C-C	1
3	360120	BENT AXIS MOTOR 250 VARI DISP	1
4	362104	HYDRO PUMP, 100cc EDC w/PAD	1
5	366032	3/4 x 240 HOSE ASM 1-7/16 FFOR x 1-3/16 FFOR	1
6	366033	3/4 x 170 HOSE ASM 1-3/16 FFOR x 1-3/16 FFOR90	1
7	366040	1 x 150 SUCT HOSE 1-7/16 FFOR x 1-7/16 FFOR90	1
8	366041	1 x 360 HP HOSE ASM 1 CODE 62 90 x 1-5/16 FJ	1
9	366041	1 x 360 HP HOSE ASM 1 CODE 62 90 x 1-5/16 FJ	1
10	367114	HOSE COUPLING 3/4 x 1-7/16 ORFS	1
11	367130	HOSE STEM, 1" x 1"FJX 16GS-16FJX	2
12	367137	HOSE COUPLING 1" x 16G-16FFORX	2
13	367139	HOSE COUPLING, 1" x 16G-16FFORX90S	2
14	367140	HOSE STEM 1", 16GS-20FL90	2
15	367141	HOSE COUPLING, 3/4"x 1-3/16 FFFORX	1
16	367415	FERRULE, 16GS1F-4	4
17	368134	STRAIGHT ADAPTER, 1" MP x 1-7/16" ORFS	1
18	368450	FLANGE ADAPTER 16FLH-16MJ90 CODE 62	2
19	368451	FLANGE SET 16 FHH SPLIT C62 (1")	2
20	368453	FLANGE SET 20 FHH C62 (1-1/4")	2
21	368675	HYD ADAPTER 90° 1-5/8" MOR x 1-7/16" FFOR	1
22	368698	ADAPTER, 1-1/16" MOR x 1-7/16" FFOR 90°	1
23	368699	ADAPTER, 1-5/16" MOR x 1-3/16" FFOR 90°	1
24	400207	HEX NUT # 5 PLTD 7/16"	8
25	400208	HEX NUT 1/2"-13 #5 PLTD	4
26	400212	HEX NUT 3/4"-10 #5 PLTD	4
27	400606	HEX JAM NUT 3/8-16"	2
28	402007	SPRING LOCK WASHER 7/16" PLTD	8
29	402008	SPRING LOCK WASHER 1/2" PLTD	4
30	402012	SPRING LOCK WASHER 3/4" PLTD	4
31	402110	LOCK WASHER 5/8" EXTERNAL STAR PLTD	1
32	402412	FLAT WASHER 3/4" PLTD	4
33	402508	FLAT WASHER, 1/2" ID x 1" OD	4
34	405679	HHCS 7/16 x 1-3/4 #5 PLTD	8
35	405704	HHCS 1/2"-13 x 1-3/4" #5 PLTD	4
36	405754	HHCS, 5/8"-11 x 2" #5 PLTD	1
37	405783	HHCS 3/4-10 x 3" #5 PLTD	4
38	409543	SQ HD SET SCREW CUP, 3/8" x 1"	2
39	660014	HYDROSTAT TRK 1350 DRIVE LINE KIT (Breakdown on Pg 59)	1
40	760656	625 TRK HYD RES ASM (breakdown on Pg 50)	1
41	860797	1350 COMP FLANGE 15T 8/16 SPLINE	1
42	860798	1350 COMP FLANGE 1-3/4-20T SPLINE	1
43	872388	LONG PUMP BOX 22-1/4"	1

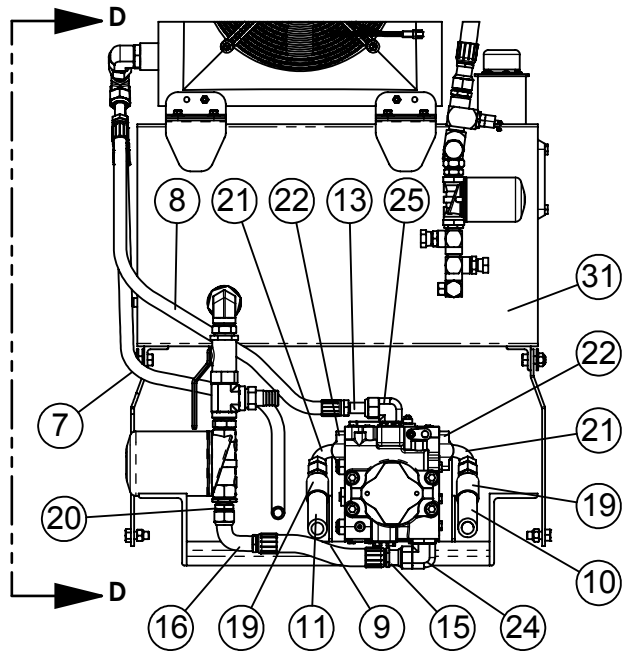
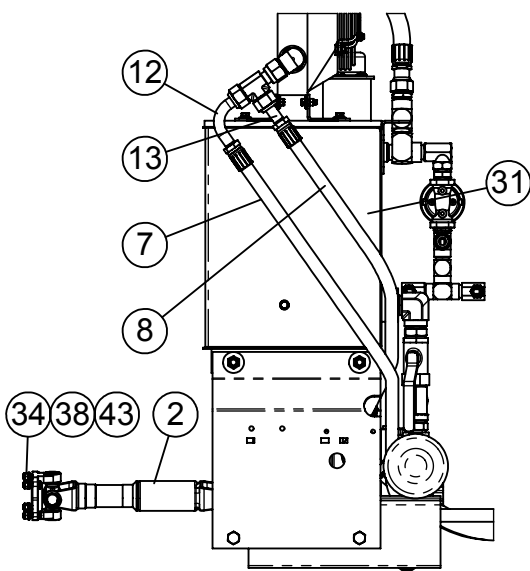
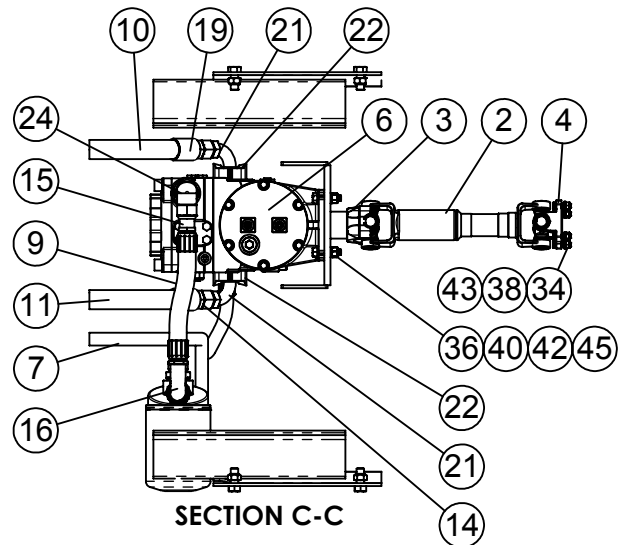
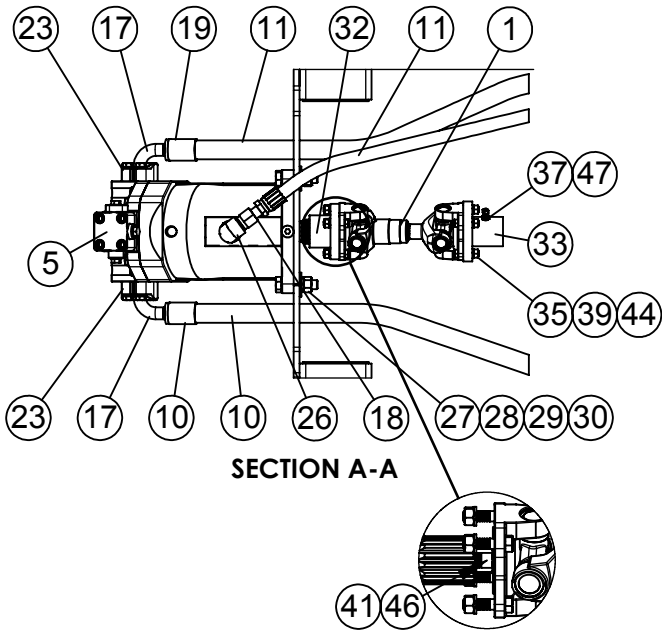
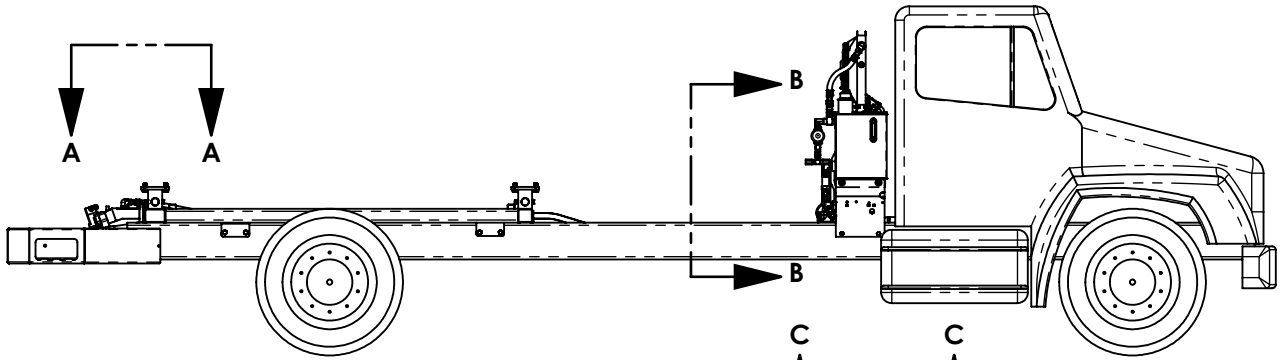
625 TRUCK HYDRAULIC RESERVOIR ASSEMBLY (#760656)



625 TRUCK HYDRAULIC RESERVOIR ASSEMBLY (#760656)

ITEM #	PART #	DESCRIPTION	QTY.
1	162835	BRACKET, COOLER MOUNT, D36	4
2	362402	1" FILTER ASSY	1
3	362404	FILTER HEAD, 1-1/4" FP	1
4	362441	FILTER ELEMENT VE-10 - 1"	1
5	362442	FILTER ELEMENT 1-1/4"	1
6	362507	SUCTION SCREEN 2" x 1 1/4"	1
7	362550	FILLER CAP ASSY. FLOE EZY - AB1000-3	1
8	362555	SIGHT GAUGE 5"	1
9	362586	HEAT EXCHANGER W/ELECTRIC FAN	1
10	362812	SWITCH, 190° TEMP w/SPADES	1
11	362819	SWITCH, 115° TEMP W/SPADES	1
12	368034	ELBOW, STREET 90° 1" MP x 1" FP	1
13	368036	ELBOW, STREET 90° 1-1/4"MP x 1-1/4"FP	1
14	368041	SWIVEL, 90° 3/4" MP x 1/2" FP	2
15	368113	STRAIGHT SWIVEL, 3/4" MP x 1/2" FPS	1
16	368117	STRAIGHT SWIVEL, 3/4" MP x 3/4" FPS	1
17	368134	STRAIGHT SWIVEL, 1" MP x 1-7/16" ORFS	1
18	368514	HOSE BARB 1-1/4" MP x 1-1/4"	1
19	368527	BALL VALVE, 1-1/4" FP	1
20	368614	BRANCH TEE 3/4" MP x 3/4" FP x 3/4" FP	1
21	368616	STREET TEE 3/4"MP x 3/4"FP x 3/4"FP	2
22	368620	STREET TEE 1" MP x 1" FP x 1" FP 5602-16	2
23	368631	STREET TEE, 1-1/4"	1
24	368647	HEX NIPPLE, 1" MP x 1" MP	1
25	368648	HEX NIPPLE, 1-1/4" MP x 1-1/4" MP	2
26	368666	HEX REDUCER, 1-1/4" MP x 1" FP	1
27	368667	HEX REDUCER, 1" MP x 1/2" FP	1
28	368675	ELBOW, 90° 1-5/8"MOR x 1-7/16"FFOR	2
29	368676	TEE, RUN 1-7/16" FFORX	1
30	368697	BUSHING, 1" MP x 3/4" FP PLTD (STEEL)	1
31	400906	HEX NUT, 3/8"-16 CROWN LOC #5 PLTD	4
32	400910	HEX CROWN LOCNUT 5/8"-11 #9 PLTD	4
33	402006	WASHER SPRING LOCK 3/8" MED PLTD	8
34	402406	FLAT WASHER 3/8" PLTD	12
35	402410	FLAT WASHER 5/8" MED PLTD	4
36	405652	HHCS 3/8"-16 x 3/4" #5 PLTD	8
37	405653	HHCS 3/8"-16 x 1" #5 PLTD	4
38	405752	HHCS, 5/8"-11 x 1-1/2" #5 PLTD	4
39	781892	HOSE ASM, 1 x 15, 1-7/16 FFOR x 1-7/16 FFOR	1
40	860725	VERTICAL HYDRAULIC RESERVOIR WA - 30 GAL	1

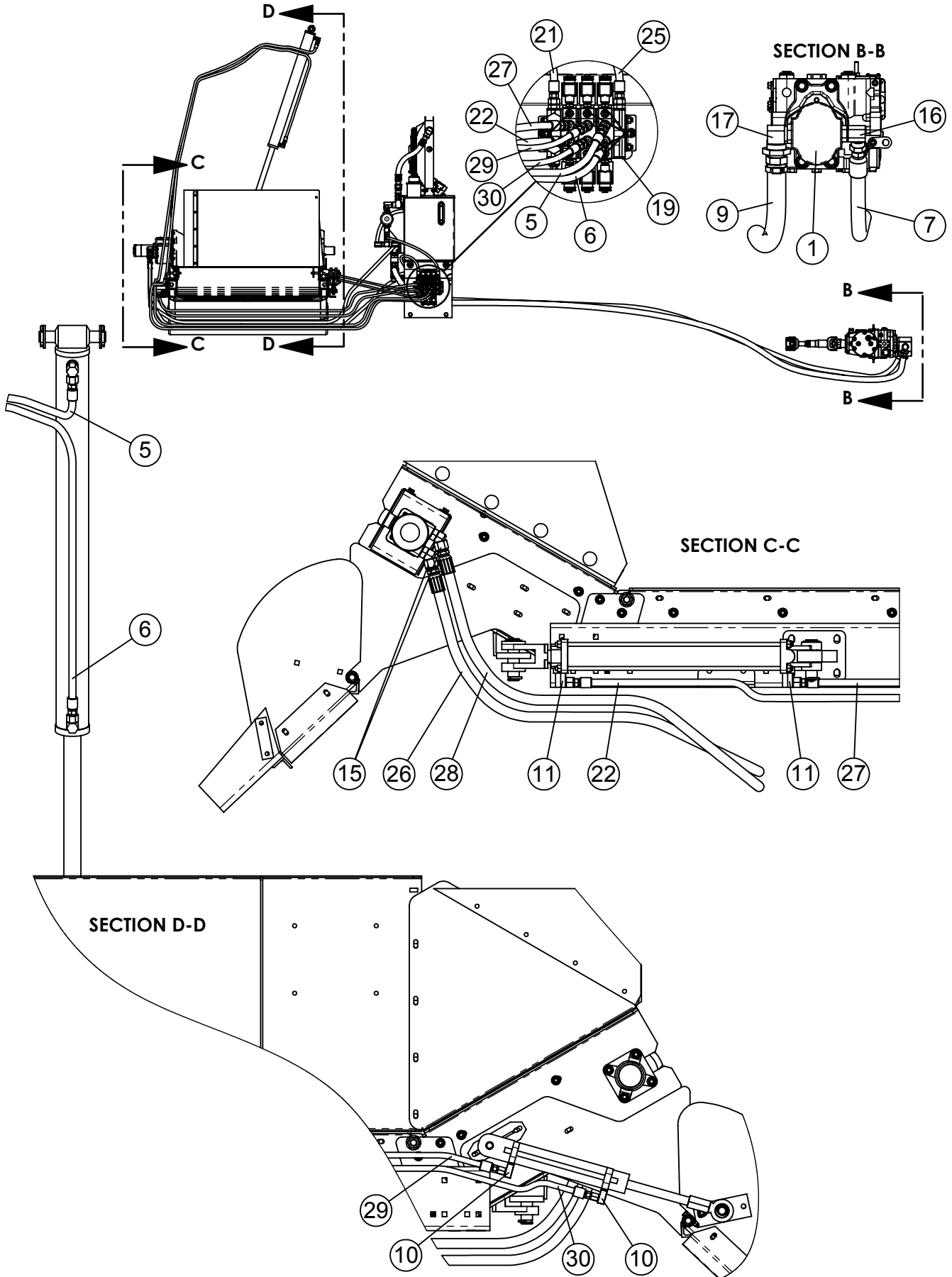
625 TRUCK REAR PTO HYDRAULIC DRIVE KIT



625 TRUCK REAR PTO HYDRAULIC DRIVE KIT

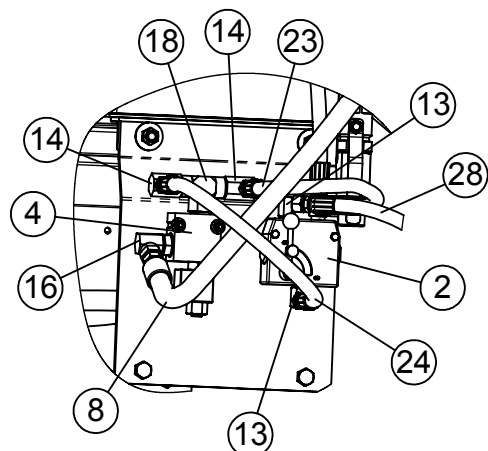
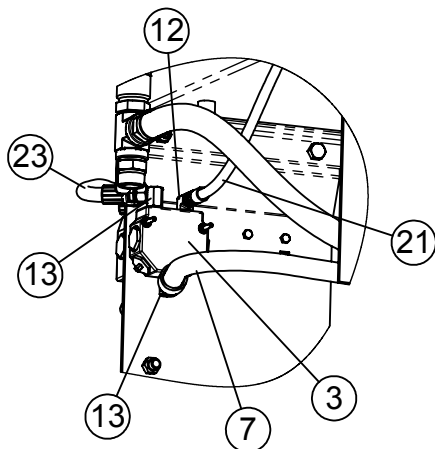
ITEM #	PART #	DESCRIPTION	QTY.
1	338007	DRIVE LINE ASSY 1410 5.35" C-C (breakdown on Pg 00)	1
2	338054	SPICER DRIVE SHAFT ASSY 7703-5204 (breakdown on Pg 59)	1
3	338415	SPICER YOKE 1350 1-1/2" TAPER	1
4	338429	FLANGE YOKE, SPICER 1350	1
5	360120	BENT AXIS MOTOR 250 VARI DISP	1
6	362101RH	100c HYDRO PUMP W/ FLANGE MANUAL RH	1
7	366032	HOSE, HYD 3/4" x 242"	1
8	366033	HOSE, HYD 3/4" x 37"	1
9	366040	HOSE, HYD 1" X 10-1/2" SUCTION	1
10	366041	HOSE, HYD 1" x 220"	1
11	366041	HOSE, HYD 1" x 220"	1
12	367113	HOSE COUPLING 3/4 x 1-7/16 ORFS90	1
13	367114	HOSE COUPLING 3/4 x 1-7/16 ORFS	2
14	367130	HOSE STEM, 1" x 1"FJX 16GS-16FJX	2
15	367137	HOSE COUPLING 1" x 16G-16FFORX	1
16	367139	HOSE COUPLING, 1" x 16G-16FFORX90S	1
17	367140	HOSE STEM 1", 16GS-20FL90	2
18	367141	HOSE COUPLING, 3/4"x 1-3/16 FFFORX	1
19	367415	FERRULE, 16GS1F-4	4
20	368134	STRAIGHT SWIVEL, 1" MP x 1-7/16" ORFS	1
21	368450	FLANGE ADAPTER 16FLH-16MJ90 CODE 62	2
22	368451	FLANGE SET 16 FHH SPLIT C62 (1")	2
23	368453	FLANGE SET 20 FHH C62 (1-1/4")	2
24	368675	ELBOW, 90° 1-5/8"MOR x 1-7/16"FFOR	1
25	368698	ADAPTER, 1-1/16" MOR x 1-7/16" FFOR 90°	1
26	368699	ADAPTER, 1-5/16" MOR x 1-3/16" FFOR 90°	1
27	400212	HEX NUT 3/4"-10 #5 PLTD	4
28	402012	SPRING LOCK WASHER 3/4" PLTD	4
29	402412	FLAT WASHER 3/4" PLTD	4
30	405783	HHCS 3/4-10 x 3" #5 PLTD	4
31	760656	625 TRK HYD RES ASM (breakdown on Pg 50)	1
32	860797	1350 COMP FLANGE 15T 8/16 SPLINE	1
33	860798	1350 COMP FLANGE 1-3/4-20T SPLINE	1
34	400206	HEX NUT 3/8"-16 #5 PLTD	8
35	400207	HEX NUT # 5 PLTD 7/16"	8
36	400208	HEX NUT 1/2"-13 #5 PLTD	4
37	400606	HEX JAM NUT 3/8-16"	2
38	402006	WASHER SPRING LOCK 3/8" MED PLTD	8
39	402007	SPRING LOCK WASHER 7/16" PLTD	8
40	402008	SPRING LOCK WASHER 1/2" PLTD	3
41	402110	LOCK WASHER 5/8" EXTERNAL STAR PLTD	1
42	402508	FLAT WASHER, 1/2" ID x 1" OD	4
43	405654	HHCS 3/8"-16 x 1-1/4" #5 PLTD	4
44	405679	HHCS 7/16 x 1-3/4 #5 PLTD	8
45	405705	HHCS 1/2"-13 x 2" #5 PLTD	4
46	405754	HHCS, 5/8"-11 x 2" #5 PLTD	1
47	409543	SQ HD SET SCREW CUP, 3/8" x 1"	2

625 TRUCK CONVEYOR & DISCHARGE DOOR HYDRAULIC CONTROLS

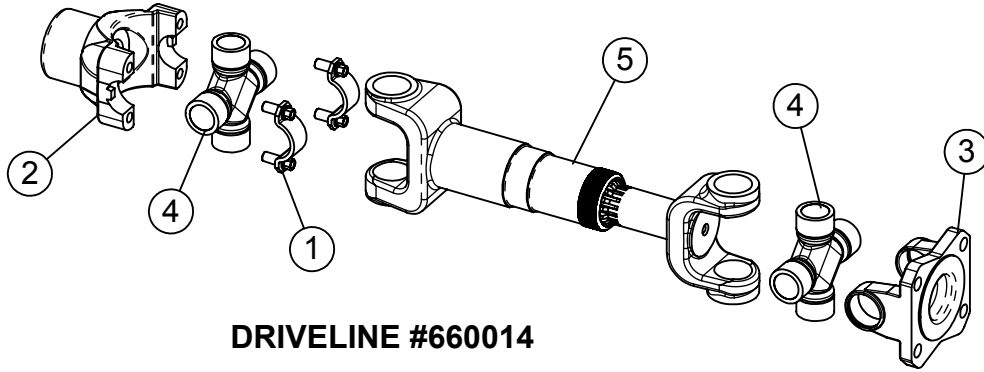


625 TRUCK CONVEYOR & DISCHARGE DOOR HYDRAULIC CONTROLS

ITEM#	PART #	DESCRIPTION	QTY.
1	362031	GEAR PUMP 1.92 IN ³ 11T SPLINE	1
2	362283	VALVE PRINCE HYD. FLOW DIVIDER	1
3	362286	VALVE PRINCE HYD. FLOW DIVIDER 70/30	1
4	362337	VALVE, HYDRAFORCE DUMP WITH 2000 PSI RELIEF	1
5	366006	HOSE ASM, 3/8" x 244", 3/8MP x 3/8MP	1
6	366006	HOSE ASM, 3/8" x 266", 3/8MP x 3/8MP	1
7	366032	HOSE ASM, 3/4" x 170", 3/4MP x 1/2MP	1
8	366032	3/4 x 60 HOSE ASM 3/4 MP x 3/4 MP	1
9	366085	HOSE ASM - SUCT, 1-1/4" x 168", 1-1/4MP x 1-1/4MP	1
10	368011	HYD ADAPTER, 1/4MP x 1/4FPX 90° 1/16"ORIFICE	2
11	368020	HYD ADAPTER 3/8"MP x 3/8"FPX 90°	2
12	368028	HYD SWIVEL 90° 1/2"MP x 3/8"FP	1
13	368031	HYD SWIVEL 1/2" MP x 1/2" FP 90°	4
14	368041	SWIVEL, 90° 3/4" MP x 1/2" FP	2
15	368052	HYD FITTING 7/8"MOR x 1/2"FPX 45°	2
16	368057	ELBOW SWIVEL, 1-1/16"MOR x 3/4"FPS 90°	2
17	368066	HYD FITTING 1-5/16" MOR x 1-1/4" FPS - 90deg.	1
18	368614	BRANCH TEE 3/4" MP x 3/4" FP x 3/4" FP	1
19	780121	TRIPLE HYD CONTROL VALVE ASSY-TRK	1
NS	780123	DBL HYD VALVE ASSY-TRK	1
21	781061	3/8 x 42 HOSE ASM 3/8 MP x 3/8 MP	1
22	781329	3/8 x 125 HOSE ASM 3/8MP x 3/8MP	1
23	781333	1/2 x 30 HOSE ASM 1/2 MP x 1/2 MP	1
24	781344	1/2 x 21 HOSE ASM 1/2 MP x 1/2 MP	1
25	781357	3/8 x 32 HOSE ASM 3/8MP x 1/2MP	1
26	781611	1/2 x 160 HOSE ASM 1/2 MP x 1/2 MP	1
27	781831	3/8 x 108 HOSE ASM 3/8MP x 3/8MP	1
28	781836	1/2 x 141 HOSE ASM 1/2 MP x 1/2 MP	1
29	781893	1/4 x 104 HOSE ASM 1/4MP x 3/8MP	1
30	781893	1/4 x 104 HOSE ASM 1/4MP x 3/8MP	1

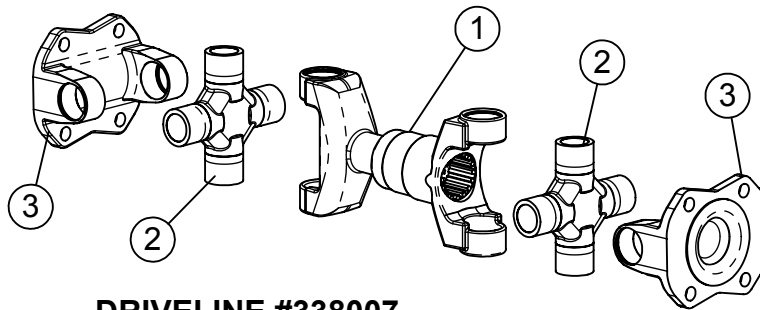


625 TRUCK DRIVELINE ASSEMBLIES



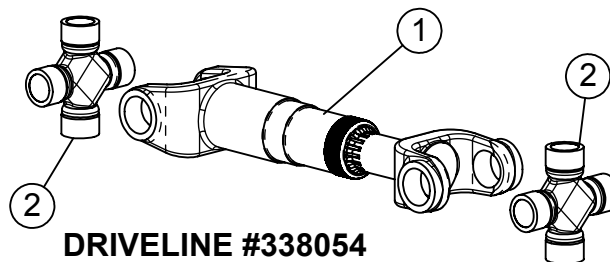
DRIVELINE #660014

ITEM #	PART #	DESCRIPTION	QTY.
1	338413	U STRAP & BOLT KIT 3-70-28X (1350)	2
2	338415	SPICER YOKE 1350 1-1/2" TAPER	1
3	338429	FLANGE YOKE, SPICER 1350	1
4	338436	CROSS KIT, SPICER 1350 5-178X	2
5	781401	1350 SPLINE SHAFT & SLIP YOKE ASY (Includes #4, Cross Kits)	1



DRIVELINE #338007

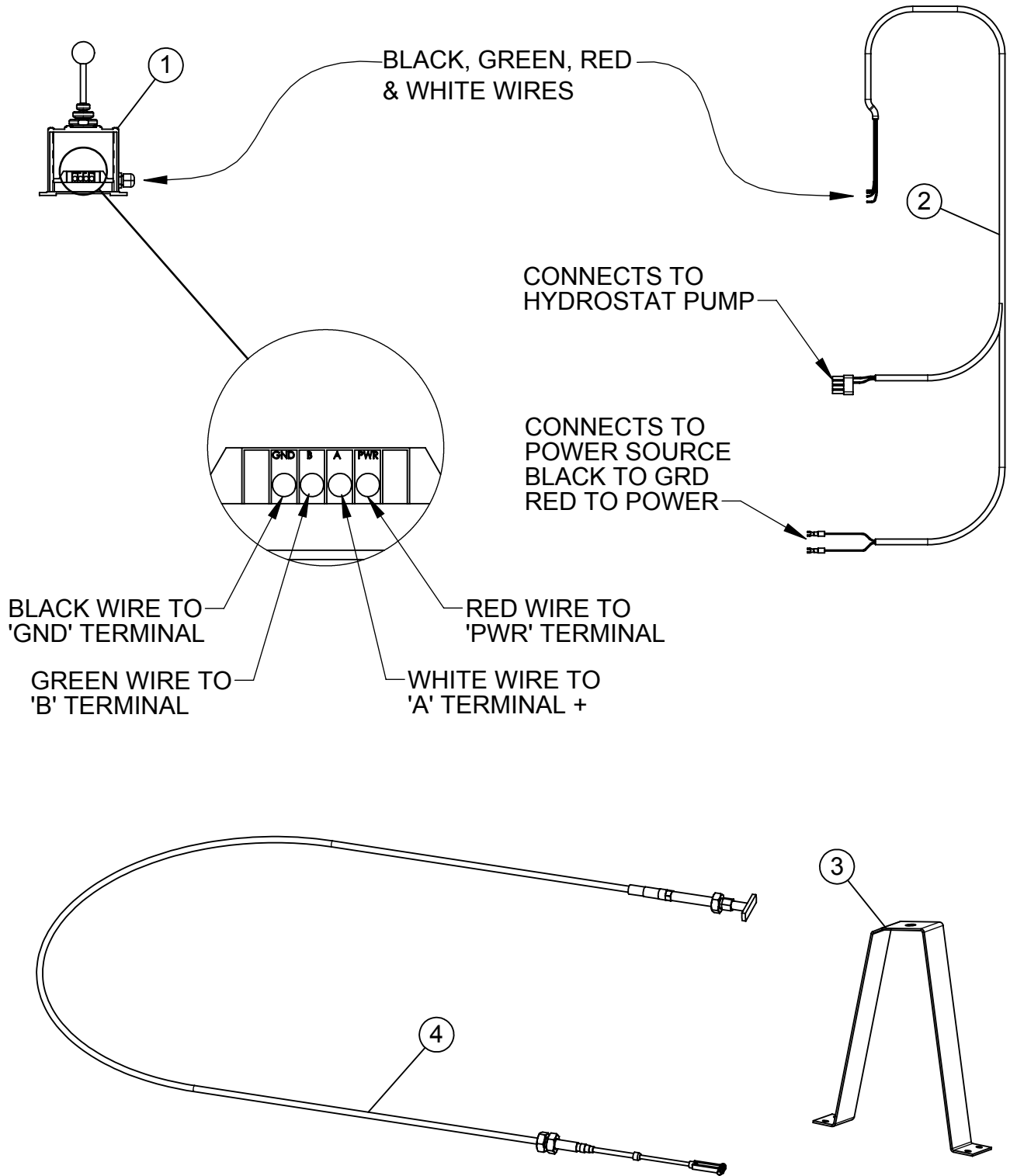
ITEM #	PART #	DESCRIPTION	QTY.
1	338007	Driveline 1410 5.35" C-C (Includes #2, Cross Kits)	1
2	338402	CROSS KIT, SPICER, 1410 5-160X	2
3	338411	FLANGE YOKE, SPICER 1410, 3-2-159	2



DRIVELINE #338054

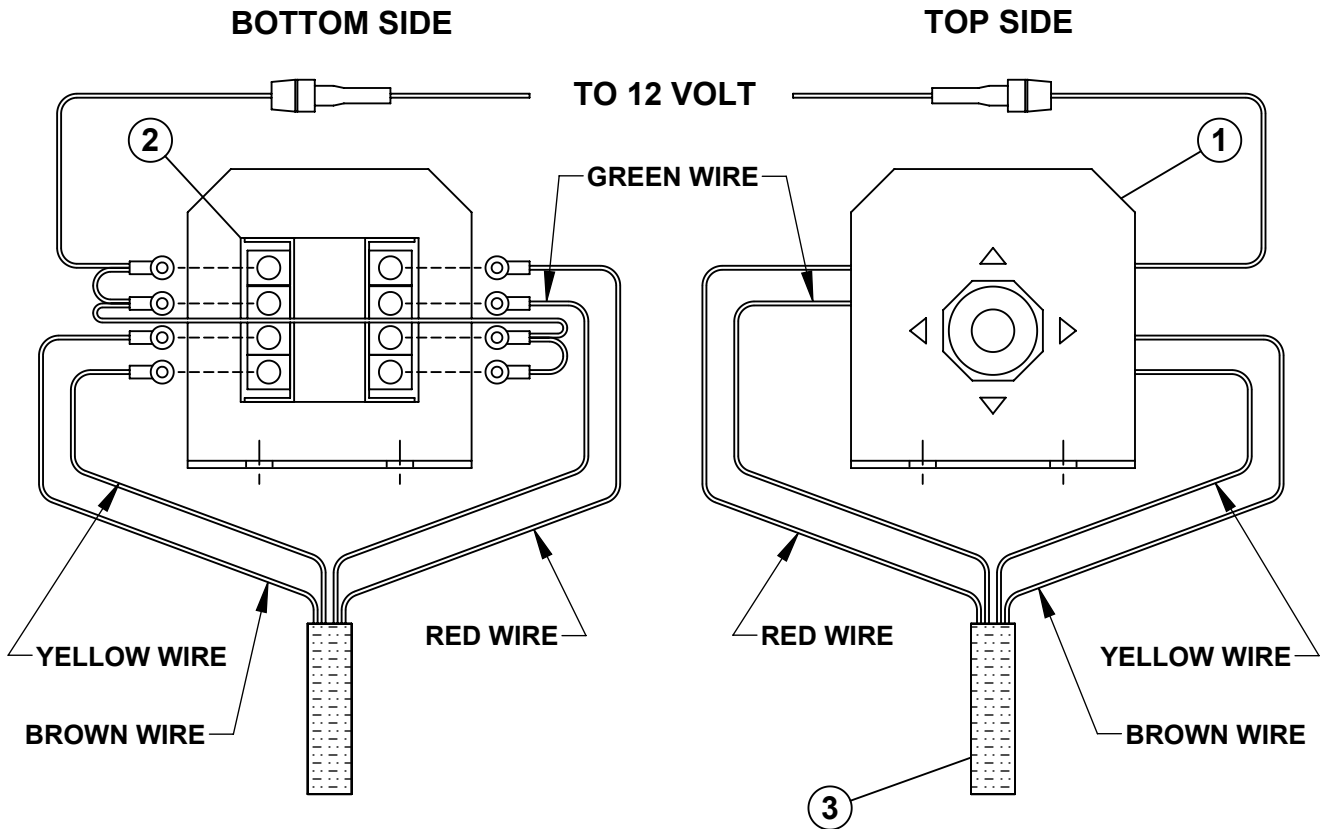
ITEM #	PART #	DESCRIPTION	QTY.
1	781401	1350 SPLINE SHAFT & SLIP YOKE ASY (Includes #2, Cross Kits)	1
2	338436	CROSS KIT, SPICER 1350 5-178X	2

TRUCK HYDROSTAT ELECTRIC DISPLACEMENT CONTROL & MANUAL CONTROL ENGINE DRIVEN PUMP



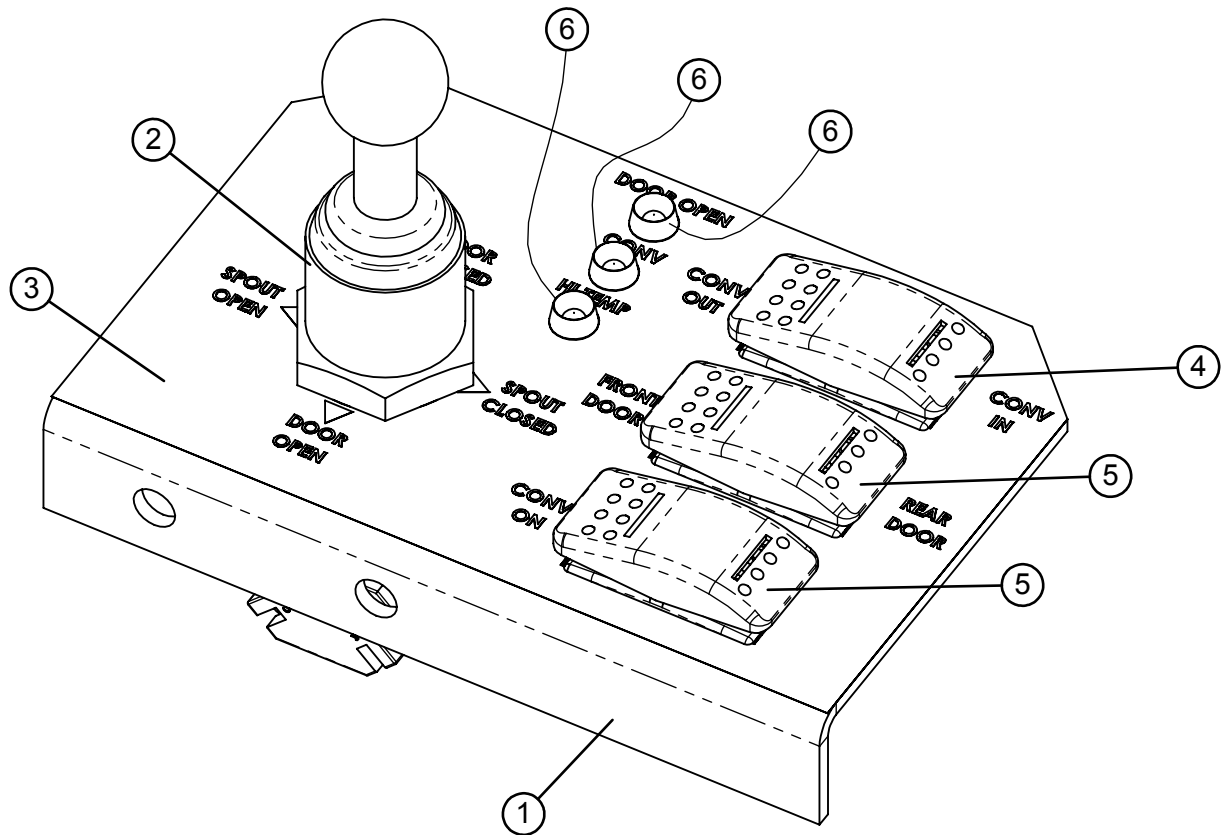
ITEM #	PART #	DESCRIPTION	QTY.
1	357710	MACHINE CONTROL HANDLE	1
2	358444	TRUCK EDC HARNESS	1
3	189267	T-LOCK CABLE BRACKET	1
4	370304	T-LOCK CABLE W/ 1/4" CLEVIS	1

JOYSTICK ASSEMBLY



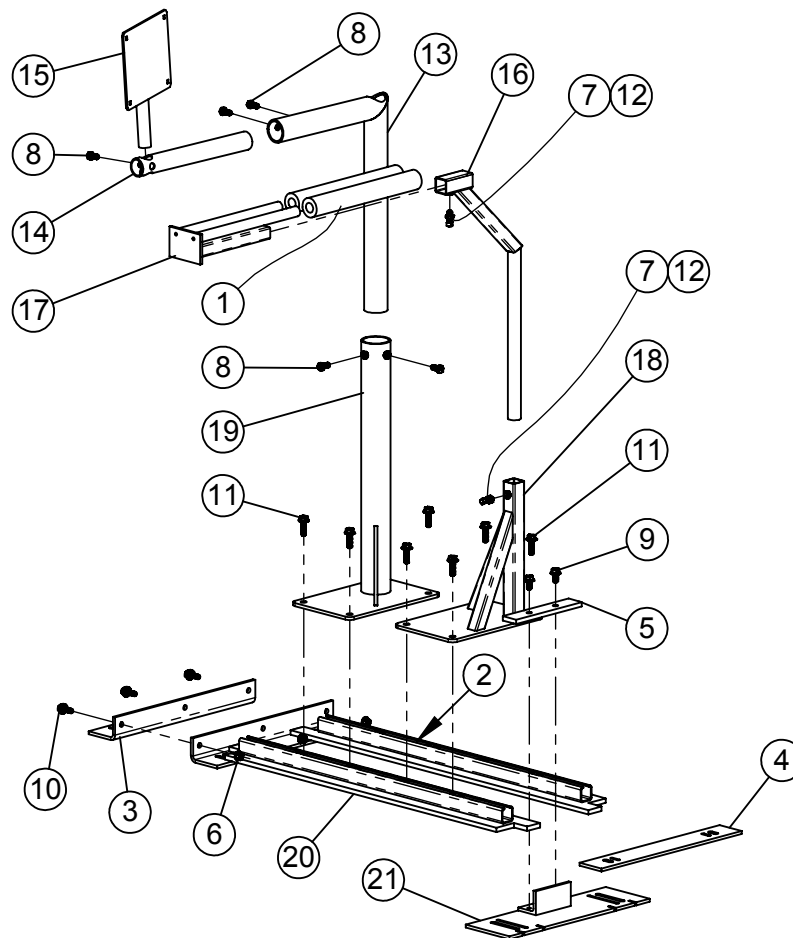
REF #	PART #	DESCRIPTION	QTY.
1	185575	JOYSTICK BRACKET	1
2	357705	JOYSTICK SWITCH	1
3	781056	SWITCH WIRE ASSEMBLY	1

VERTICAL TRUCK JOYSTICK SWITCH PANEL ASSEMBLY



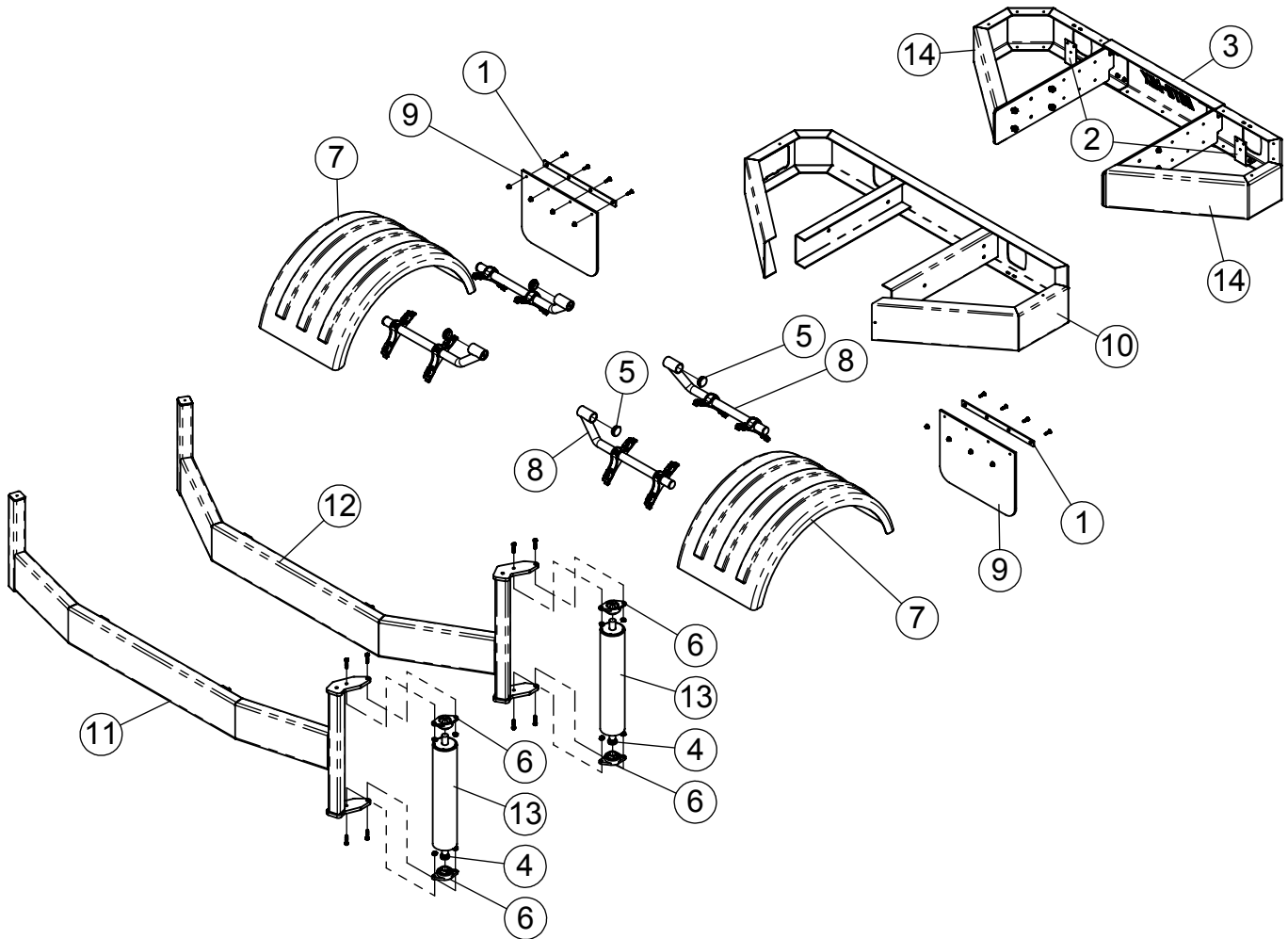
ITEM #	PART #	DESCRIPTION	QTY.
1	162624	JOYSTICK BRACKET W/REAR DOOR SWITCH	1
2	357705	JOYSTICK, (4-WAY) SCHNEIDER 9001K35	1
3	440864	DECAL, 4-WAY JOYSTICK (VERTICALS)	1
4	452743	SWITCH, ROCKER ON-OFF-ON, (DPDT) 44323	1
5	452744	SWITCH, ROCKER ON-OFF, (SPST), 44301	2
6	454111	LIGHT, RED LED	3

TRUCK CAB SCALE INDICATOR FRAME PARTS



ITEM #	PART #	DESCRIPTION	QTY.
1	185930	ARM REST PAD 12"	2
2	192578	ARM REST SLIDE BAR	4
3	192585	BRACKET, PASSENGER CAB SEAT	1
4	192587	SPACER, TRUCK CAB DRIVER'S SEAT	1
5	192593	PLATE, TRUCK CAB MOUNT SETTING	1
6	400107	HEX NUT, 3/8"-16 SERRATED FLANGE #5	3
7	400606	HEX JAM NUT 3/8-16"	2
8	405652	HHCS 3/8"-16 x 3/4" #5 PLTD	5
9	407900	HHCS 3/8"-16 x 3/4" SERRATED #5 PLTD	2
10	407901	HHCS 3/8"-16 X 1" SERRATED #5 PLTD	3
11	407904	HHCS 3/8"-16 x 1-1/4" SERRATED #5 PLTD	8
12	409543	SQ HD SET SCREW CUP, 3/8" x 1"	2
13	871095	TRUCK SCALE INDICATOR MOUNT W.A.	1
14	871103	INDICATOR EXTENSION TUBE W.A.	1
15	871111	TRUCK SCALE INDICATOR SWIVEL W.A.	1
16	872263	ARM REST GOOSE NECK W.A.	1
17	872264	ARM REST W.A.	1
18	873389	SHORT ARM REST STAND W.A.	1
19	873390	SHORT TRUCK SCALE IND. BASE W.A.	1
20	873391	BASE, TRUCK CAB MOUNT WA	1
21	873394	BRACKET, DRIVER'S SEAT WA	1

625 TRUCK FENDERS & BUMPERS



ITEM #	PART #	DESCRIPTION	QTY.
1	183087	MUD FLAP STRAP	2
2	185600	TAIL LIGHT BRKT	2
3	192219	PLATE, FLR 10" RR BMPR ROTO-MIX	1
4	192227	SPACER, BUMPER ROLLER	2
5	310975	CAPLUG-RIBBED-RD 2-3/8" x 2-1/16"	4
6	340222	BEARING, 1 3/8" VCJT	4
7	354391	POLY FENDER	2
8	354392	POLY FENDER MOUNTING KIT	4
9	370202	ROTO-MIX MUD FLAP 24" x 18-1/2"	2
10	780903	REAR BUMPER 10"	1
11	872430	BMPR, TRK FT BOLT-ON, REPTO WA	1
12	872431	BMPR, TRK FT BOLT-ON WA, FEPTO	1
13	872434	ROLLER, FT BUMPER, 5" DIA.	2
14	873286	BMPR, 10" REAR HALF, RECT. W.A.	2