



625 VERTICAL FEED MIXER



OPERATION AND PARTS MANUAL

ROTO-MIX LLC
P.O. BOX 1724
2205 E. Wyatt Earp Blvd.
Dodge City, Kansas 67801
(620) 225-1142
© ROTO-MIX LLC 2006

TABLE OF CONTENTS

	PAGE NO.
INTRODUCTION.....	4
WARRANTY	5
SCALES WARRANTY & SERVICE POLICY	6
OPERATOR QUALIFICATIONS	7
SAFETY	8-18
OPERATION	19-21
LUBRICATION	22-23
TROUBLE SHOOTING.....	24
SPECIFICATIONS & DIMENSIONS	25-26
REPAIR PARTS CONTENTS PAGE.....	27

INTRODUCTION

Congratulations on the purchase of your new Vertical Mixer from ROTO-MIX. With proper operation and preventative maintenance it will last for years.



This SAFETY ALERT SYMBOL indicates important safety messages in the manual. When you see this symbol, be alert to the possibility of PERSONAL INJURY and carefully read the message that follows.

NEVER OPERATE WITHOUT ALL COVERS, SHIELDS AND GUARDS IN PLACE. KEEP HANDS, FEET AND CLOTHING AWAY FROM MOVING PARTS.

⚠ WARNING Some covers and guards have been removed for illustrative/photographic purposes only in this manual. However, equipment should never be operated in this condition. Keep all shields in place. If shield removal becomes necessary for repairs, replace the shield prior to use.

The Guarantee appears in the front of this book along with the Registration and Inspection Certificate.

For information on ordering repair parts, refer to the Repair Parts section at the back of this book.

The serial number plate is located on the drivers side lower front of the main frame. This number should be recorded on the Registration and Inspection Certificate for your reference and for proper identification of your mixer by ROTO-MIX.

You are urged to study this manual and follow the instructions carefully. Your efforts will be repaid in better operation and service as well as a savings in time and repair expense.

Failure to read this manual and understand the safe operation of the mixer could lead to serious injury.

If you do not understand the instructions in this manual contact either your dealer or ROTO-MIX at Dodge City, Kansas 67801.

This supersedes all previous published instructions.



Limited Warranty Statement

ROTO-MIX LLC warrants to the original purchaser all products manufactured by it to be free from defects in material and workmanship under normal use and service.

ROTO-MIX's obligation under this warranty is limited to repairing or replacing, as the company may elect, free of charge and without charge for installation, at the place of business of a dealer or distributor authorized to handle the equipment covered by this warranty or at a ROTO-MIX facility, any parts that prove, in the company's judgment, to be defective in material or workmanship within one (1) year after delivery to the original purchaser, and still owned by the original purchaser. This warranty shall in no way make ROTO-MIX liable to anyone for personal injuries or damages, loss of time, or expense of any kind either direct or indirect resulting from part failure or defect. This warranty is subject to acts of God, fire and existing conditions of supply and demand, or production, or ability or inability to deliver, or for any other valid reason beyond the reasonable control of ROTO-MIX, to obtain materials, manufactured replacement parts, or make delivery thereof. No distributor, dealer, agent, or ROTO-MIX employee (other than the CEO or President in writing) is authorized to extend any other or further express or implied warranty or incur any additional obligation on ROTO-MIX's behalf in connection with the sale of this product.

If ROTO-MIX, or its duly authorized representative, shall find that such returned part or parts are defective and such defects, or defect, are included in and covered by said warranty, then such defective part or parts shall promptly be replaced without charge to the purchaser, F.O.B. the ROTO-MIX plant.

Product Registration - It is a condition of this warranty that the original purchaser must fill out the warranty card furnished by ROTO-MIX and that it be returned to ROTO-MIX within 10 days of purchase and be recorded in ROTO-MIX's owner file for this warranty to be valid. In the event an owner's card is not on file at the ROTO-MIX office, the warranty period will extend only from date equipment was picked up or shipped from the ROTO-MIX plant.

Maintenance - It is the customer's responsibility to maintain their equipment in accordance with the instructions provided in the Operator's Manual. ROTO-MIX recommends that you keep records and receipts; you may be asked to prove that maintenance instructions have been followed.

Operation - It is the customer's responsibility to operate the equipment only for the purpose for which it was designed and in accordance with all safety and operational recommendations contained in the Operators Manual. If a defect in materials or workmanship occurs, it is the customer's responsibility to cease operating the equipment until authorized repairs are made. **Damage, which occurs from continued operation, may not be covered by this warranty.**

What this Warranty Covers

This warranty covers failures caused by defects in materials or workmanship only.

This Warranty does **not** cover failures caused by:

- Improper operation
- Natural calamities
- Unauthorized modifications
- Unauthorized repairs
- Use of Non ROTO-MIX parts
- Neglected maintenance
- The use of PTO Shaft Adaptors
- Usage contrary to the intended purpose of the product

Warranty continues on the next page.

Limited Warranty Statement continued

This Warranty does not cover replacement of Wear or Maintenance Items including, but not limited to.

- | | | | |
|--------------|----------|-------------|----------|
| - Lubricants | - Tires | - Chains | - Blades |
| - Filters | - Augers | - Idlers | - Belts |
| - Hoses | - Wipers | - Batteries | |

This Warranty does not cover:

- Pickup and delivery of the equipment
- Service Calls or Travel Time to and from sites
- Rental of replacement equipment during repair period
- Products that have been declared a total loss and subsequently salvaged
- Overtime labor charges
- ROTO-MIX is not responsible and will not be liable for damage caused to persons or property, commercial loss, loss of time or production, loss of use by reason of the installation or use of ROTO-MIX products or their mechanical failure.

Right to Make Changes

ROTO-MIX reserves the right to make any changes to a ROTO-MIX product at any time without incurring any obligation with respect to any product previously ordered, sold or shipped, with or without notice.

Parts Warranty

ROTO-MIX warrants replacement parts against defects in materials or workmanship for a period of 90 days or the remainder of the product warranty, whichever is longer. Remedy for defective replacement parts for units that are beyond the original product warranty, will be limited to replacement of the failed part. Failures that are due to damage, improper installation, lack of maintenance or improper operation will not be covered.

ROTO-MIX 2205 East Wyatt Earp Blvd., Dodge City, KS 67801 (620) 225-1142 Fax: (620) 225-6370

SCALES WARRANTY & SERVICE POLICY

DIGI-STAR SCALE SYSTEMS

Digi-Star, LLC warrants for a period of one year from date of installation, to correct by repair or replacement, at Digi-Star's option, any defect in material or workmanship in any part of this product. In the event of replacement, Digi-Star's sole obligation shall be to provide replacement products or parts. F.O.B. Digi-Star, LLC, W5527 Hwy 106, Fort Atkinson, WI 53538 USA.

WEIGH-TRONIX SCALE SYSTEMS

WEIGH-TRONIX warrants for a period of one year from date of installation, to correct by repair or replacement, at Weigh-Tronix's option, any defect in material or workmanship in any part of this product. In the event of replacement, Weigh-Tronix's sole obligation shall be to provide replacement products or parts. F.O.B. Avery Weigh-Tronix, 1000 Armstrong Drive, Fairmont, MN 56031-1439 USA.

OPERATOR QUALIFICATIONS

Operation of this mixer shall be limited to competent and experienced persons. In addition, anyone who will operate or work around a mixer must use good common sense. In order to be qualified, he or she must also know and meet all other qualifications, such as:

1. Some regulations specify that no one under the age of sixteen (16) may operate power machinery. It is your responsibility to know what these regulations are in your area and/or situation.
2. Current OSHA regulations state in part: At the time of initial assignment and at least annually thereafter, the employer shall instruct **EVERY** employee in the safe operation and servicing of all equipment with which the employee is, or will be involved.
3. Unqualified persons are to **STAY OUT OF THE WORK AREA.**
4. A person who has not read and understood all operating and safety instructions is not qualified to operate the machinery.

FAILURE TO READ THIS MIXER MANUAL AND ITS SAFETY INSTRUCTIONS IS A MISUSE OF THE EQUIPMENT.



SAFETY

TAKE NOTE! THIS SAFETY ALERT SYMBOL FOUND THROUGHOUT THIS MANUAL IS USED TO CALL YOUR ATTENTION TO INSTRUCTIONS INVOLVING YOUR PERSONAL SAFETY AND THE SAFETY OF OTHERS. FAILURE TO FOLLOW THESE INSTRUCTIONS CAN RESULT IN INJURY OR DEATH.



THIS SYMBOL MEANS

ATTENTION!

BECOME ALERT!

YOUR SAFETY IS INVOLVED!

SIGNAL WORDS: Note the use of the signal words DANGER, WARNING, and CAUTION with the safety messages. The appropriate signal word for each has been selected using the following guidelines:

DANGER: Indicates an imminently hazardous situation that, if not avoided, will result in serious injury or death. This signal word is to be limited to the most extreme situations typically for machine components which, for functional purposes, cannot be guarded.

WARNING: Indicates a potentially hazardous situation that, if not avoided, will result in serious injury or death, and includes hazards that are exposed when guards are removed. It may also be used to alert against unsafe practices.

CAUTION: Indicates a potentially hazardous situation that, if not avoided, may result in minor or moderate injury. It may also be used to alert against unsafe practices.

If you have questions not answered in this manual or require additional copies or the manual is damaged, please contact your dealer or ROTO-MIX, 2205 E. Wyatt Earp, Dodge City, Kansas, 67801. (Telephone) 620-225-1142 (Fax) 620-225-6370

SAFETY FIRST

REMEMBER: The careful operator is the best operator. Most accidents are caused by human error. Certain precautions must be observed to prevent the possibility of injury or death.



DO NOT ALLOW PERSONNEL OTHER THAN THE QUALIFIED OPERATOR NEAR THE MACHINE.



NEVER START MACHINE UNTIL ALL GUARDS AND SAFETY SHIELDS ARE IN PLACE.



DO NOT CLEAN, ADJUST OR LUBRICATE THE MACHINE WHILE IT IS IN MOTION.



BEFORE STARTING TRACTOR ENGINE, BE SURE PTO SHIELDS TURN FREELY.



LOOSE OR FLOPPY CLOTHING SHOULD NOT BE WORN BY THE OPERATOR.

OPERATING PRECAUTIONS & INSTRUCTIONS:

- A. Check to see that no obstructions are present in the mixer prior to start up.
- B. Before loading, run the mixer empty and check all operations.
- C. Do not overload the mixer. Maximum load for the 625 is 15,500 LB. Maximum load is determined by weight, not volume.
- D. Be sure all shields are in place before operation.
- E. Use common sense when operating.



EQUIPMENT SAFETY GUIDELINES

Safety of the operator is one of the main concerns in designing and developing a new piece of equipment. Designers and manufactures build in as many safety features as possible. However, every year many accidents occur which could have been avoided by a few seconds of thought and a more careful approach to handling equipment. You, the operator, can avoid many accidents by observing the following precautions in this section. To avoid personal injury, study the following precautions and insist those working with you, or for you, follow them.

In order to provide a better view, certain photographs or illustrations in this manual may show an assembly with a safety shield removed. However, equipment should never be operated in this condition. Keep all shields in place. If a shield is removed to perform maintenance or make a repair, reinstall the shield after the maintenance or repair is complete.

Replace any CAUTION, WARNING, DANGER or instruction safety decal that is not readable or is missing. Location of such decals are indicated in this manual.

Do not attempt to operate this equipment under the influence of drugs or alcohol.

Review the safety instructions with all users annually.

This equipment is dangerous to children and persons unfamiliar with its operation. The operator should be a responsible adult familiar with farm machinery and trained in this equipment's operations. Do not allow persons to operate or perform maintenance or repairs on this unit until they have read this manual and have developed a thorough understanding of the safety precautions and of how it works.

Do not paint over, remove or deface any safety signs or warning decals on your equipment. Observe all safety signs and follow the instructions on them.

Never exceed the limits of a piece of machinery, in its ability to do a job, or to do so safely, if safe operation is in question - **DON'T TRY IT.**



LIGHTING AND MARKING

It is the responsibility of the customer to know the lighting and marking requirements of the local highway authorities and to install and maintain the equipment to provide compliance with the regulations. Add extra lights when transporting at night or during periods of limited visibility.



KEEP ALL SHIELDS IN PLACE

Do not operate mixer without safety shields in place.

Rotating parts can crush or dismember causing personal injury or death.

Disconnect PTO driveline before removing shields for adjustment or service.



OPERATE MIXER SAFELY

Rotating parts can entangle or strike people, resulting in personal injury or death.

Never enter a mixer while in operation.

Operate the mixer from the operator's tractor seat only.

Do not exceed load capacity of the mixer. (See loading instructions).

Reduce speed when turning or traveling on rough terrain.

Avoid traveling over loose fill, rocks, ditches or holes.

Keep transmissions in gear when traveling downhill.



KEEP RIDERS OFF MIXER

Keep riders off.

Riders are subject to injury such as being struck by foreign objects and being thrown off. Riders also obstruct the operator's view resulting in the machine being operated in an unsafe manner.





STAY CLEAR OF ROTATING DRIVELINES

Entanglement in rotating driveline can cause serious injury or death.

Keep driveline shields in place at all times. Make sure rotating shields turn freely.

Do not wear loose-fitting clothing which may catch in moving parts. Stop the engine and be sure PTO driveline is stopped before making adjustments, connections, or cleaning out PTO driven equipment .



PREVENT BATTERY EXPLOSIONS

Keep sparks, lighted matches, and open flame away from the top of battery. Battery gas can explode.

Never check battery charge by placing a metal object across the posts. Use a volt-meter or hydrometer.

Do not charge a frozen battery; it may explode. Warm battery to 60F (16C).



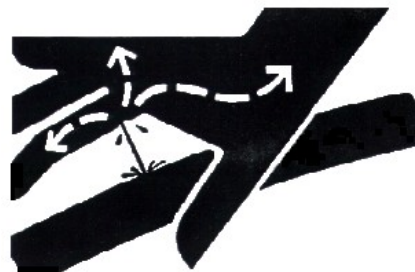
AVOID HIGH-PRESSURE FLUIDS

Escaping fluid under pressure can penetrate the skin causing serious injury or death.

Avoid this hazard, relieve pressure before disconnecting hydraulic or other lines. Tighten all connections before applying pressure.

Search for leaks with a piece of cardboard. Protect hands and body from high pressure fluids.

If an accident occurs, see a doctor immediately. Any fluid injected into the skin must be surgically removed within a few hours or gangrene may result. Doctors unfamiliar with this type of injury should reference a knowledgeable medical source.





SAFETY DECAL CARE

Keep safety decals and signs clean and legible at all times.

Replace safety decals and signs that are missing or have become illegible.

Replaced parts that displayed a safety sign should also display the current sign.

Safety decals or signs are available from your dealer or the ROTO-MIX manufacturing plant.

How to Install Safety Decals:

Be sure that the installation area is clean and dry.

Decide on the exact position before you remove the backing paper of the decal.

Remove the smallest portion of the split backing paper.

Align the decal over the specified area and carefully press the small portion with the exposed sticky backing in place.

Slowly peel back the remaining paper and carefully smooth the remaining portion of the decal in place.

Small air pockets can be pierced with a pin and smoothed out using the piece of decal backing paper.



IMPORTANT
ALWAYS REDUCE ENGINE SPEED
TO IDLE BEFORE ENGAGING
AND DISENGAGING PTO.
DISENGAGE TRACTOR PTO
BEFORE TURNING.

440801



PRACTICE FIRE PREVENTION

Keep fire extinguishers accessible at all times. Use the extinguisher recommended for the material being processed. It should be rated safe for use on electrical fires.

Never smoke close to combustible material.

Clean the area before welding or other activities which may make sparks.

Keep all components that generate excessive heat clear of oil and other combustible materials.



REMEMBER

Your best assurance against accidents is a careful and responsible operator. If there is any portion of this manual or function you do not understand, contact your dealer or the ROTO-MIX plant.

BEFORE OPERATION:

Carefully study and understand this manual.

Do not wear loose-fitting clothing which may catch in moving parts.

Always wear protective clothing and substantial shoes.

Keep wheel lug nuts or bolts tightened to specified torque (220 ft-lb).

Assure that tires are inflated evenly.

Give the unit a visual inspection for any loose bolts, worn parts or cracked welds, and make necessary repairs. Follow the maintenance safety instructions included in this manual.

Be sure that there are no tools lying on or in the mixer.

Do not use the unit until you are sure that the area is clear, especially clear of children and animals.

Because it is possible that this mixer may be used in dry areas or the presence of combustibles, special precautions should be taken to prevent fires and fire fighting equipment should be readily available.

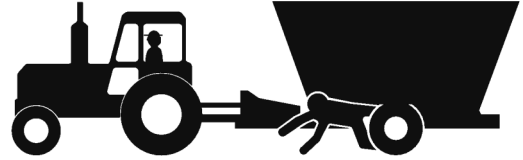
Don't hurry the learning process or take the unit for granted. Become familiar with your new mixer before operating.

Practice operation of your mixer and its attachments. Completely familiarize yourself and other operators with its operation before using.



DURING OPERATION:

Beware of bystanders, **particularly children !**
Always look around to make sure that it is safe to start the engine or move the unit. This is very important with higher noise levels and quiet cabs, you may not hear people shouting.



NO PASSENGERS ALLOWED - Do not carry passengers anywhere on, or in equipment, except as required for operation.

Keep hands and clothing clear of moving parts.

Do not clean, lubricate or adjust your mixer while it is moving.

Be observant of the operating area and terrain - watch for holes, rocks or other hidden hazards. Always inspect the area prior to operation.

Do not operate near the edge of drop-offs or banks.

Do not operate on steep slopes as rollover may result.

Operate up and down (not across) slopes. Avoid sudden starts and stops.

Pick a smooth and as level as possible route when transporting across fields. Avoid the edges of ditches or gullies and steep hillsides.

Be extra careful when working on inclines.

Clear the equipment of brush, twigs or other materials to prevent buildup of dry combustible materials.

Maneuver the vehicle at safe speeds.

Avoid overhead wires or other obstacles. Contact with overhead lines could cause serious injury or death.

Avoid loose fill, rocks and holes; they can be dangerous for equipment operation or movement. Allow for unit length when making turns.

Do not walk or work under raised components or attachments unless securely positioned and blocked.

Keep all bystanders, pets and livestock clear of the work area.

Operate the towing vehicle from the tractor operator's seat only.

Never attempt to start engine and/or operate machine while standing alongside of unit.



DURING OPERATION (CONT)

Never leave running mixer unattended.

As a precaution, always recheck the hardware on mixer following every 100 hours of operation. Correct all problems. Follow the maintenance safety procedures.



FOLLOWING OPERATION:

Following operation, set the brakes, disengage all power drives, shut off the engine and remove the ignition keys.

Store the unit in an area away from human activity.

Do not park equipment where it will be exposed to livestock for long periods of time. Damage to equipment and livestock injury could result.

Do not permit children to play on or around the stored unit.

Make sure parked machine is on a hard, level surface and engage all safety devices.

Wheel chocks may be needed to prevent unit from rolling.



HIGHWAY AND TRANSPORT OPERATIONS:

Adopt safe driving practices:

Always drive at a safe speed relative to local conditions and ensure that your speed is low enough for an emergency stop to be safe and secure. Keep speed to a minimum.

Reduce speed prior to turns to avoid the risk of overturning.

Avoid sudden uphill turns on steep slopes.

Always keep the vehicle in gear to provide engine braking when going downhill. Do not coast.

Do not drink and drive.



HIGHWAY AND TRANSPORT OPERATIONS (CONT):

Comply with state and local laws governing highway safety and movement of farm machinery on public roads.

Use approved accessory lighting, flags and necessary warning devices to protect operators of other vehicles on the highway during daylight and nighttime transport.

The use of flashing amber lights is acceptable in most localities. However, some localities prohibit their use. Local laws should be checked for all highway lighting and marking requirements.

When driving mixer on the road or highway under 20 MPH (40 KPH) at night or during the day, use flashing amber warning lights and a slow moving vehicle (SMV) identification emblem.

Plan your route to avoid heavy traffic.

Be a safe courteous driver. Always yield to oncoming traffic in all situations, including narrow bridges, intersections, etc.

Be observant of bridge loading ratings. Do not cross bridges rated lower than the gross weight at which you are operating.

Watch for obstructions overhead and to the side while transporting.

Always operate mixer in a position to provide maximum visibility at all times. Make allowances for increased length and weight of the mixer when making turns, stopping the unit, etc.



PERFORMING MAINTENANCE:

Good maintenance is your responsibility. Poor maintenance is an invitation to trouble.

Make sure there is plenty of ventilation. Never operate the engine of the vehicle in a closed building. The exhaust fumes can cause asphyxiation.

Before working on the mixer, stop the vehicle, set the brakes, disengage the PTO and all power drives, shut off the engine and remove the ignition keys.

Be certain all moving parts on attachments have come to a complete stop before attempting to perform maintenance.

Always use a safety support and block the wheels. Never use a jack to support the machine.

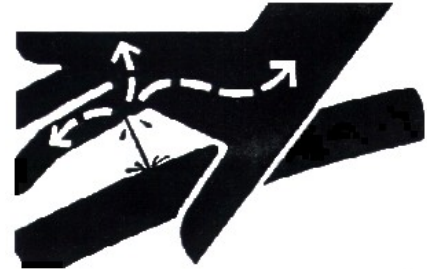


PERFORMING MAINTENANCE (CONT):

Always use the proper tools or equipment for the job at hand.

Use extreme caution when making adjustments.

Never use your hands to locate hydraulic leaks on attachments. Use a small piece of cardboard or wood. Hydraulic fluid escaping under pressure can penetrate the skin.



When disconnecting hydraulic lines, shut off hydraulic supply and relieve all hydraulic pressure.

Openings in the skin and minor cuts can be infected from hydraulic fluid. If injured by escaping hydraulic fluid, see a doctor at once. Gangrene can result. Without immediate treatment, serious infection and reactions can occur.

Replace all shields and guards after servicing and before moving.

After servicing, be sure all tools, parts and service equipment are removed.

Do not allow grease or oil to build up on any step or platform.

Never replace hex bolts with less than grade five (5) bolts unless otherwise specified.

Where replacement parts are necessary for periodic maintenance and servicing, genuine factory replacement parts must be used to restore your equipment to original specifications. ROTO-MIX will not claim responsibility for use of unapproved parts and/or accessories and other damages as a result of their use.

If equipment has been altered in any way from original design, ROTO-MIX does not accept any liability for injury or warranty.

A fire extinguisher and first aid kit should be kept readily accessible while performing maintenance on this mixer.

READ THE FOLLOWING BEFORE WELDING ON THIS MIXER

When welding on your mixer, do not allow the current to flow through the ball bearings or the roller chains. Ground directly to the item being welded. Clean the area before welding and have a fire extinguisher accessible at all times.

Always disconnect the scale instrumentation from the weigh bars or load cells and the power source. Be sure the current does not pass through weigh bars or load cells or scale indicator. The towing vehicle's alternator should always be disconnected if the mixer is not disconnected from the vehicle.



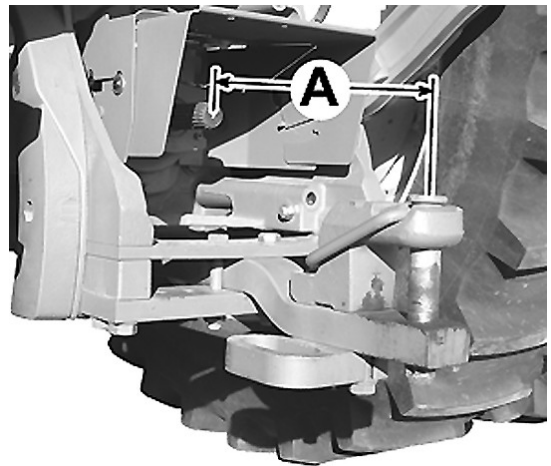
PREPARING TRACTOR FOR TRAILER MIXER

POSITIONING DRAWBAR

IMPORTANT: Drive components can be damaged from excessive speed. Do not operate tractor at speeds in excess of recommended PTO RPM.

This feed mixer is equipped with a 1000 RPM driveline. Match tractor PTO with the feed mixer driveline.

IMPORTANT: To prevent driveline damage, adjust tractor drawbar to recommended setting. Disengage tractor PTO before turning.



Install clevis on tractor drawbar.

Adjust drawbar length:

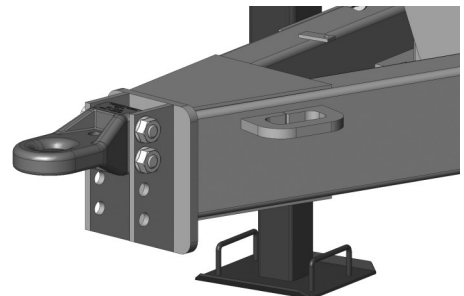
PTO SPEED	DIMENSION (A)
1000 RPM (1-3/8"-21 SPLINE)	16 inches (406 mm)
1000 RPM (1-3/4"-20 SPLINE)	20 inches (508 mm)

ADJUST TRAILER HITCH

Mixer should be approximately level when attached to tractor.

Adjust hitch by changing hole location on mixer tongue.

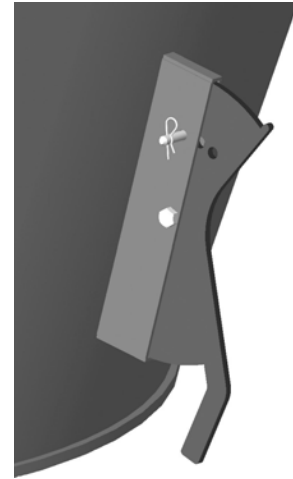
Hitch Pin Size - 1" Dia. Minimum - 1-1/2" Dia. Maximum



LOADING INSTRUCTIONS & PRECAUTIONS

- A. Visually inspect mixer before each load.
- B. Do not overload the mixer. Mixer capacity is determined by weight. An overloaded mixer will not mix correctly, and will pull harder, which could damage your unit. **Maximum weight is 15,500 LB for the 625 model.**
- C. Load hay first with machine running: **TRACTOR RUNNING AT 1000 RPM PTO SPEED.** Use a slower auger speed if you are using very tender, very fine stemmed hay that breaks apart very easily. Slower speeds allow for maximum staple length. Increase auger speed (TRACTOR - using the 2 speed gearbox) as the hay texture changes from very tender, to fine stemmed, to normal good quality hay, to very rough course hay.

Adjust restrictor plates (dogs) to fine tune length of cut. Always start with one dog, preferably the rear, engaged one hole and increase until length of cut is correct. **NOTE: engaging dogs and excessive amount will cause mix quality to deteriorate.**



- D. Add balance of grain and/or commodities, keeping more fragile ingredients toward the end of the loading sequence as possible. For best results, add concentrates or other dry ingredients of small quantity as close to the middle of the loading sequence as possible.
- E. Load silage, green chop and/or other high moisture products.
- F. Load molasses, animal fat, and/or other liquid supplements last.
- G. Allow mixer three to four minutes to complete mixing after last ingredient is added. (**NOTE:** this time will vary, and could be longer under certain conditions.)
- H. View mixing operation only from observation platform of mixer. Never allow more than two people on platform at one time.
- I. For best results, off load mixed feed at as high a RPM as possible, and with the door as open as possible.

HAY PREPARATION:

SMALL BALES (60 to 150 lbs., 2 or 3 wire), LARGE SQUARE BALES (3' x 4' x 8' or 4' x 4' x 8') and ROUND BALES.

Remove all twine, wire and/or wrapping and load bale in mixer.

VERTICAL MIXER OPERATION

Description of Operation :

This is a trailer mounted mixer that uses a 1000 RPM tractor PTO with 3 pairs of hydraulic outlets.

1. To operate the mixer, first read the LOADING INSTRUCTIONS & PRECAUTIONS on the previous page.
2. Attach the mixer to the tractor draw bar using the appropriate size hitch pin. A pin with a close fit will increase the longevity of the trailer hitch and tractor draw bar.
3. Connect the PTO driveline to the tractor and connect the hydraulic lines that operate the discharge door , the conveyor extension cylinder and the conveyor motor.
4. Start tractor ensure 2 speed gearbox is in high and engage the PTO at low engine RPM. Speed up engine RPM to the desired mixing speed.
5. When feed ration is fully mixed disengage the PTO and shift the 2 speed gearbox to low.
6. Before feeding ration, engage the hydraulics to move the conveyor out and turn on conveyor, then raise the discharge door to the height needed for the volume that is required.
7. Towards the end of feeding, disengage the PTO, shift the 2 speed gearbox to high and finish feeding for better cleanout.

For best results, off load mixed feed at as high a RPM as possible and with the door as open as possible. This will insure a more even flow of feed and result in better clean out of the mixer.

LUBRICATION

DISENGAGE PTO & SHUT OFF POWER BEFORE LUBRICATING THE MACHINE.

DO NOT WEAR LOOSE FITTING CLOTHING THAT MAY CATCH IN MOVING PARTS.

PTO SHAFTS & U-JOINTS: Grease every 10 hours of operation.

PLANETARY GEARBOXES: After the first 500 hours of operation, drain initial oil, preferably when box is warm. For an effective oil change, the unit should be flushed with a liquid detergent recommended by the lubricant supplier and refilled with oil. Thereafter oil should be changed every 2000 hours or 12 months, whichever comes first. Inspect and wash oil reservoir breather cap as needed. Air dry before reinstalling. Fill each gearbox with approximately 6 gallon of, **NOTE: (Mobil Delvac Synthetic Gear Oil 75W-90). Gearbox hydraulic system uses 3/4" filter AE-10, #362440** . Approximate volume of the planetary gearboxes and their reservoir is 15 gallons.

PROCEDURE FOR FILLING PLANETARY GEARBOX: Remove lower and upper oil line from gearbox and attach the lower oil line to the oil supply pump. Pressure oil in gear box until oil appears in the upper oil line. Repeat process with the other planetary gearbox. Reconnect oil lines and fill reservoir to center of sight gauge, run unit and add oil up to center of sight gauge if needed.. Check daily, oil level must always be visible in sight gauge. **NOTE: Refilling the gearbox through the oil reservoir can be done but you will have to let the unit set a considerable amount of time (possibly over night) to equalize the oil level in the gearboxes.**

2 SPEED GEARBOX (TRAILER UNIT): After the first 500 hours of operation, drain initial oil, preferably when box is warm. For an effective oil change, the unit should be flushed with a liquid detergent recommended by the lubricant supplier and refilled with oil. Thereafter oil should be changed every 2000 hours or 12 months, whichever comes first. Fill the gear box to sight plug with approximately 6 quarts of, **NOTE: (Mobil Delvac Synthetic Gear Oil 75W-90).**

RECOMMENDATION: It is advisable to check the oil level of gearboxes at least once a month. If more than 10% of the total oil capacity has to be added, check for oil leaks.

GEARBOX TEMPERATURES: During normal running conditions, the temperature of the outer casing of the gearbox should not exceed 175°F (80°C).

LUBRICATION CHART

⚠ WARNING ALWAYS DISCONNECT OR DISENGAGE POWER TAKE OFF AND REMOVE KEYS FROM TRACTOR BEFORE CLEANING, ADJUSTING, LUBRICATION OR SERVICING THIS MACHINE. FAILURE TO HEED MAY RESULT IN SERIOUS PERSONAL INJURY OR DEATH.

ITEM	LUBRICATION	INTERVAL
Conveyor Chain	Light Weight Oil	Brush or spray on lightly every 40 hours of operation
Conveyor Bearings	Good Quality Grease	One pump every 10 hours of operation
PTO (Slip Shaft)	Good Quality Grease	Every 10 hours IMPORTANT: At each lubrication make sure the slip shaft slides in and out freely, failure of the shaft to slide freely will result in drive train damage.
Wheel Bearings	90W Gear Lube	Inspect daily for leaks.
U-Joint	Good Quality Grease	Every 10 hours
CV-Joint	Good Quality Grease	Every 10 hours
Planetary Gearbox	Mobil Delvac Synthetic Gear Oil 75W-90	After the first 500 hours of operation, then 2000 hours or every 12 months, whichever comes first
2 Speed Gearbox	Mobil Delvac Synthetic Gear Oil 75W-90	After the first 500 hours of operation, then 2000 hours or every 12 months, whichever comes first

TROUBLE SHOOTING

⚠ WARNING ALWAYS DISCONNECT OR DISENGAGE POWER TAKE OFF AND REMOVE KEYS FROM TRACTOR BEFORE CLEANING, ADJUSTING, LUBRICATING OR SERVICING THIS MACHINE. FAILURE TO FOLLOW THIS RECOMMENDATION MAY RESULT IN SERIOUS PERSONAL INJURY OR DEATH.

NOTE: THIS CHART DOES NOT COVER ALL PROBLEMS. CONTACT YOUR DEALERSHIP FOR FURTHER ASSISTANCE.

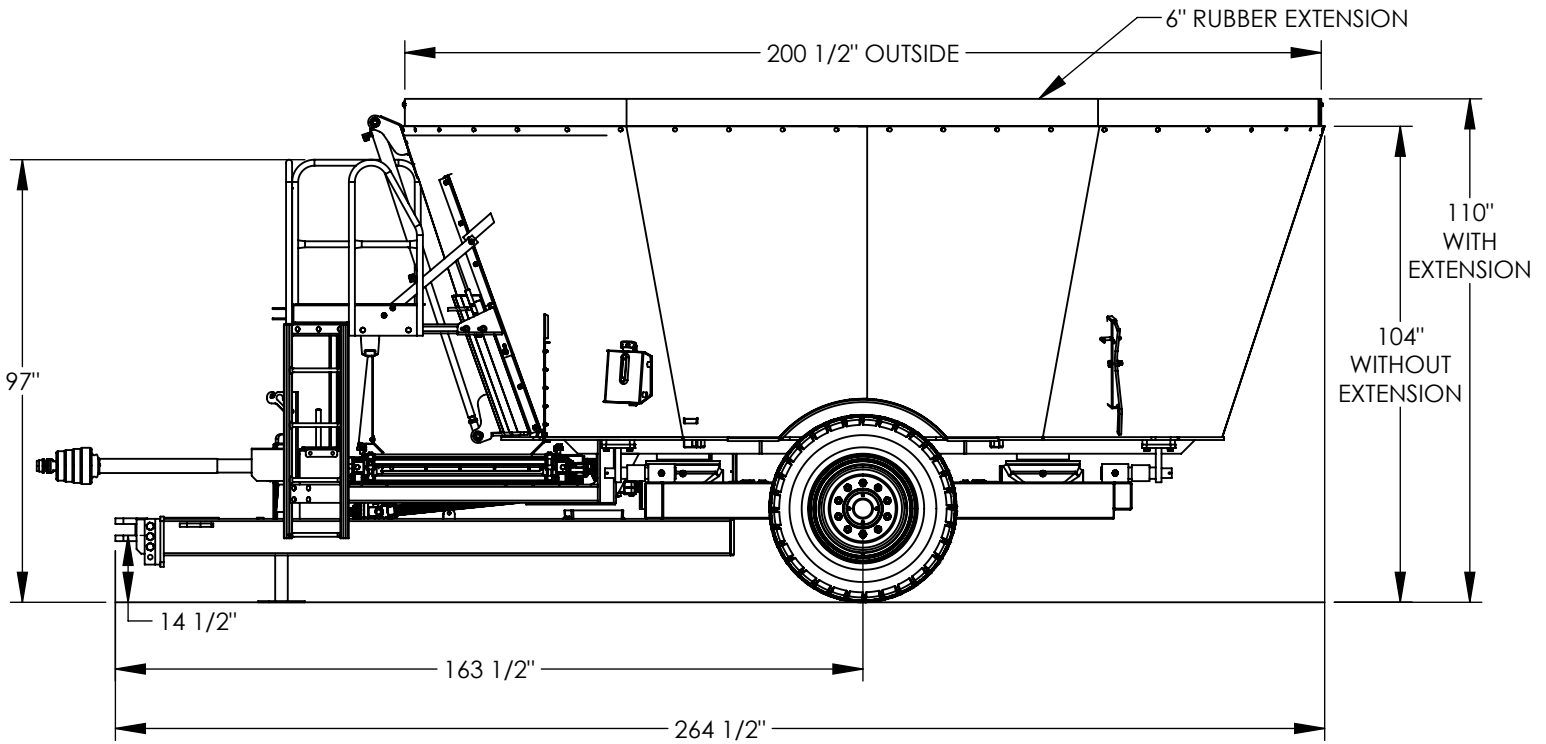
PROBLEM	POSSIBLE CAUSE	POSSIBLE REMEDY
Machine Vibration	Universal Joints Are Out Of Alignment.	Check And Realign.
	Worn Out Bearing.	Replace Bearing.
Excessive Bearing Failure	Improper Lubrication.	Refer To Lubrication Chart.
	Contamination.	Check Seal.
	Excessive Loads.	Refer To General Information About Machine Loading.
Mixing quality poor, not thorough.	Batch has high concentration of light weight ingredients and rotates too fast inside tub for thorough mixing.	Extend restrictor plates (dogs) further into tub as instructed under LOADING INSTRUCTIONS & PRECAUTIONS.
	High concentration of long hay, not being torn apart.	Extend restrictor plates (dogs) further into tub as instructed under LOADING INSTRUCTIONS & PRECAUTIONS.
Hay being added to batch, but not being incorporated into mixture.	Hay not getting shredded by mixing action, batch rotating inside tub too fast.	Extend restrictor plates (dogs) further into tub as instructed under LOADING INSTRUCTIONS & PRECAUTIONS.
Too much power being consumed to mix.	Restrictor plates extend too far into tub and retarding rotation of batch.	Move restrictor plates (dogs) away from tub as instructed under LOADING INSTRUCTIONS & PRECAUTIONS.

625 TWIN VERTICAL FEATURES & SPECIFICATIONS

Specifications	625 (Trailer)
Maximum Load with Hay Ration	11,200 lbs.
Maximum Load with Heavy Ration	15,500 lbs.
Empty Weight, Approximate	14,400
Overall Length	264 1/2"
Transport Width	108 1/2"
Overall Height	104"
Minimum Horsepower	110
Mixing Capacity in Cubic Feet	620
Tire Size	385/65R22.5
Tire, OD	42"
Discharge Magnets	Optional
Screw Speeds	26 RPM in low, 39 RPM in high @ 1000 RPM
PTO Speed	1000
Conveyor Width	42"

All Dimensions & Specifications are Approximate and Subject to Change Without Notice.

625 VERTICAL TRAILER DIMENSIONS

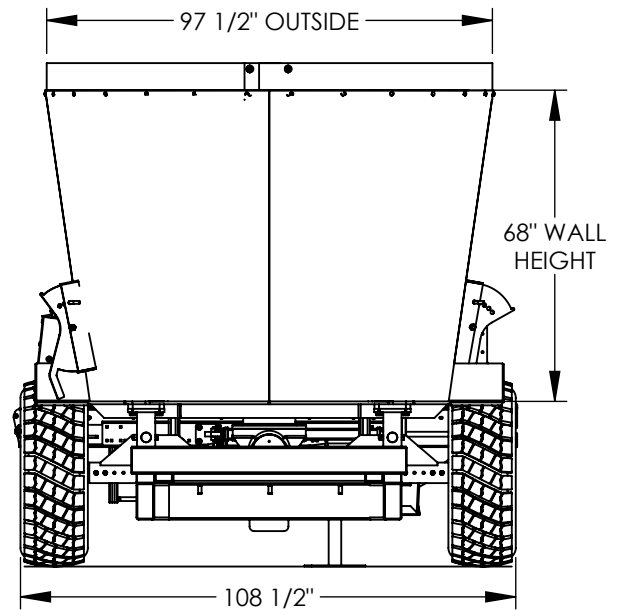


HEIGHT DIMENSIONS ARE BASED ON
A 42" OD TIRE 385/65R22.5

EMPTY WEIGHT = 14,400 LBS

1000 PTO RPM = 39 AUGER RPM

MAXIMUM LOAD BY WEIGHT = 15,500 LBS



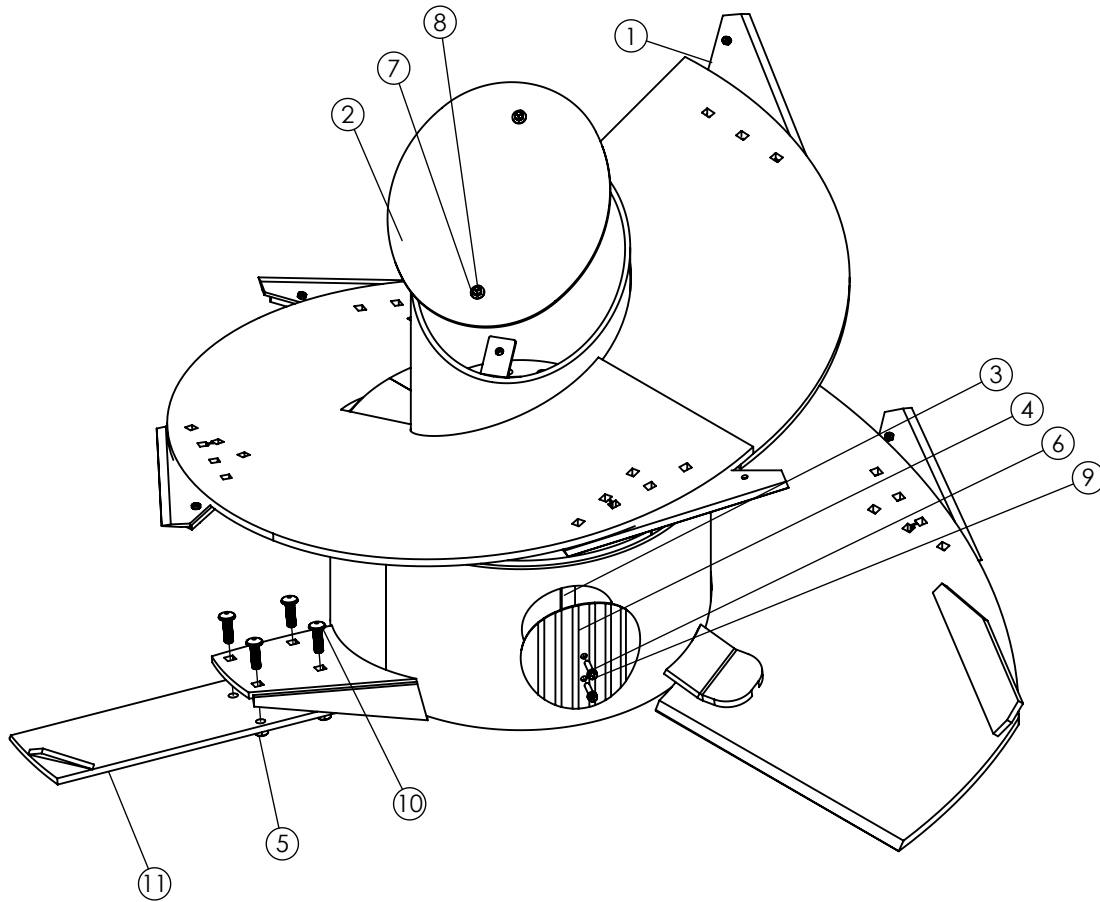
All Dimensions & Specifications are Approximate and Subject to Change Without Notice.

REPAIR PARTS

TABLE OF CONTENTS

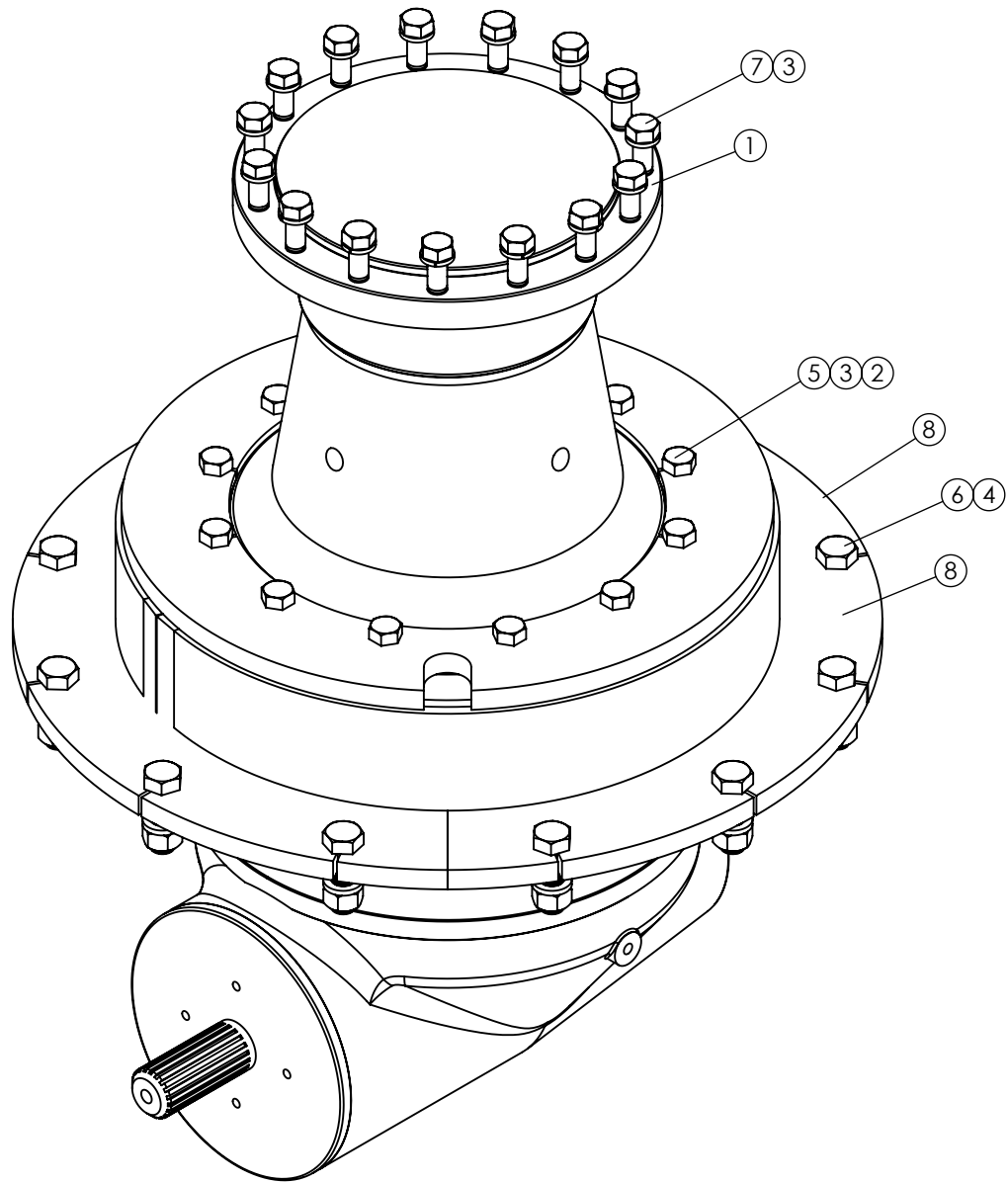
	PAGE NO.
625 TRAILER: VERTICAL AUGER ASSEMBLY	28
625 TRAILER: PLANETARY GEARBOX.....	29
625 TRAILER: GEARBOX CIRCULATION SYSTEM	30
625 TRAILER: ASSEMBLY	31
625 TRAILER: SPINDLE & HUB ASSEMBLY	32
625 TRAILER: SCALE FRAME ASSEMBLY	33
625 TRAILER: 2-SPEED GEARBOX WITH HYDRAULIC SHIFT	34-35
625 TRAILER: DRIVELINE: TRACTOR TO 2 SPEED GEARBOX	36
625 TRAILER: DRIVELINE: 2 SPEED TO PLANETARY GEARBOX	37
625 TRAILER: DRIVELINE: BETWEEN PLANETARY GEARBOXES	38
625 TRAILER: PLATFORM ASSEMBLY	39
625 TRAILER: LEFT SIDE DOOR DISCHARGE	40
625 TRAILER: FRONT CENTER DOOR.....	41
625 TRAILER: 42" WIDE FLAT CONVEYOR ASSEMBLY	42-43
625 TRAILER: 42" WIDE INCLINE CONVEYOR ASSEMBLY	44-45
625 TRAILER: 42" WIDE INCLINE CONVEYOR ASSEMBLY	46-47
625 TRAILER: 42" WIDE EXTENDED DOGLEG CONVEYOR KIT	48-49
625 TRAILER: 42" WIDE 102" INCLINE CONVEYOR ASSEMBLY	50-51
625 TRAILER: 42" WIDE INCLINE CONVEYOR SPOUT ASSEMBLY	52-53
625 TRAILER: 42" WIDE ADJUSTABLE INCLINE CONVEYOR ASSEMBLY	54-57
625 TRAILER: 42" ADJUSTABLE CONVEYOR MAGNET KIT	58
625 TRAILER: CONVEYOR RUBBER FLAP KIT.....	59
625 TRAILER: KNIFE GATE ASSEMBLY	60
625 TRAILER: RUBBER EXTENSIONS	61
625 TRAILER: DECALS.....	62

625 TRAILER VERTICAL AUGER ASSEMBLY



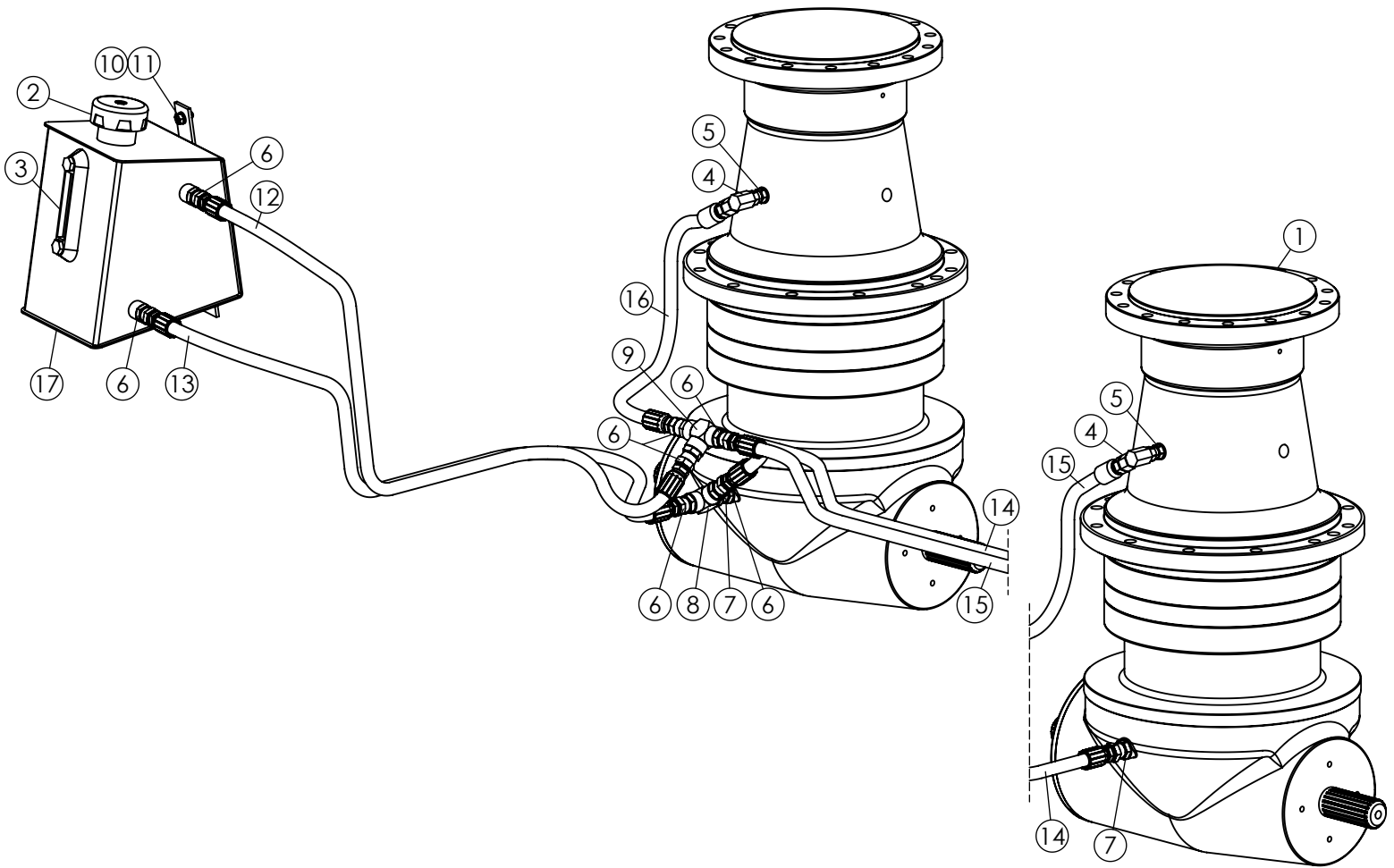
ITEM #	PART #	DESCRIPTION	QTY
1	160049	KNIFE BACKUP PLATE RH, 5 13/16" x 16 3/8"	5
2	161100	AUGER TUBE CAP 16-1/4" x 19-5/16"	1
3	161290	AUGER COVER BOLT BAR 3/8 x 1 x 8	1
4	161298	AUGER ACCESS COVER - 7" OD	1
5	400910	HEX CROWN LOCNUT 5/8"-11 #9 PLTD	8
6	402006	WASHER SPRING LOCK 3/8" MED PLTD	2
7	402406	FLAT WASHER 3/8" PLTD	2
8	405654	HHCS 3/8"-16 x 1-1/4" #5 PLTD	2
9	405655	HHCS 3/8"-16 x 1 1/2" #5 PLTD	2
10	407130	CHCS 5/8"-11 x 2" #8 PLTD	8
11	860686	VX AUGER WING KICKER W.A.	2
12	860721	625 TRL AUGER WELDMENT	1

625 TRAILER PLANETARY GEARBOX



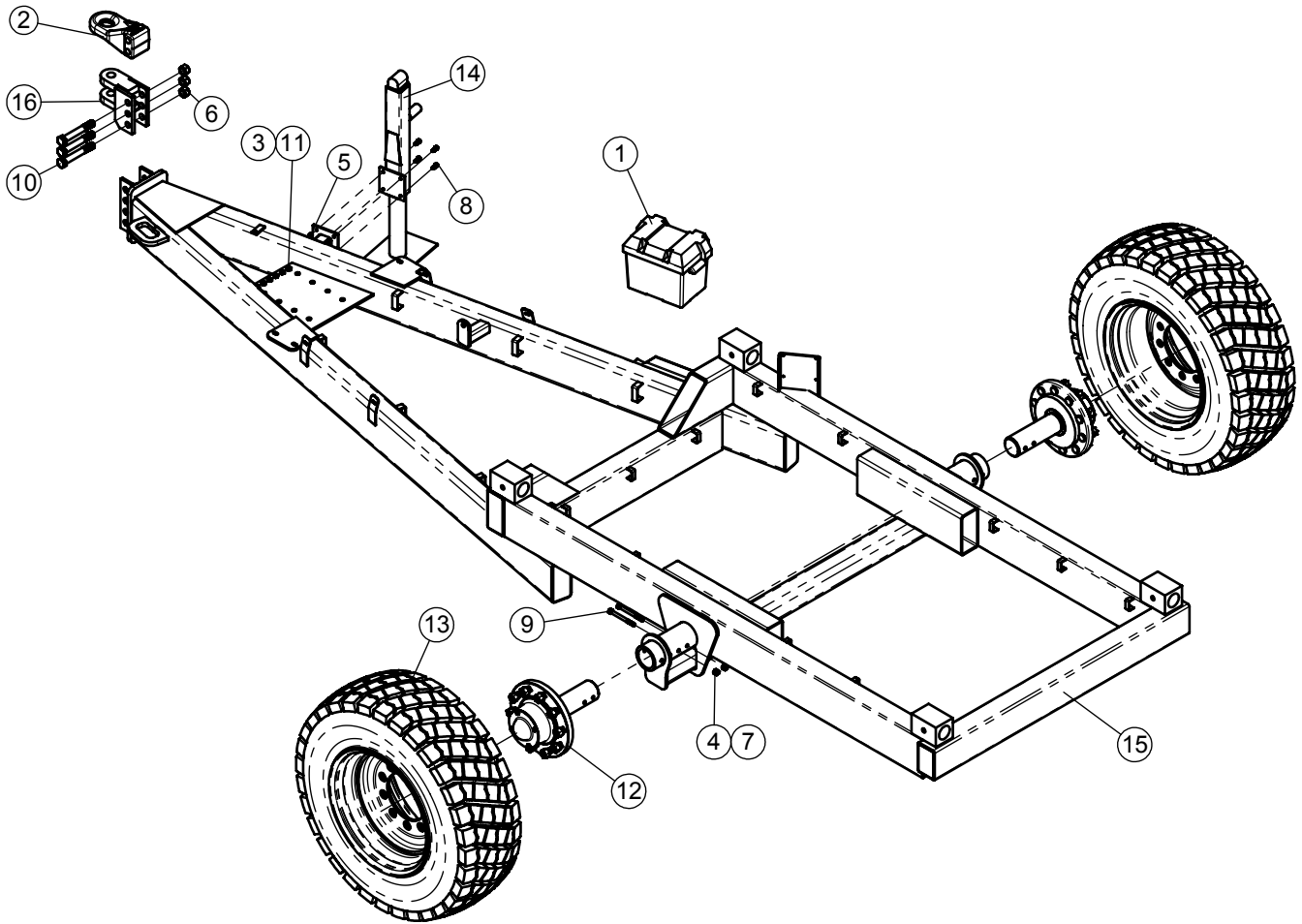
ITEM NO.	PART NO.	DESCRIPTION	QTY.
1	344146	COMER TEE - GEARBOX	2
2	400210	HEX NUT 5/8"-11 #5 PLTD	24
3	402010	SPRING LOCK WASHER 5/8" PLTD	54
4	402012	SPRING LOCK WASHER 3/4" PLTD	24
5	405758	HHCS 5/8"-11 x 3" #5 PLTD	24
6	405781	HHCS 3/4"-10 x 2-1/2" #5 PLTD	26
7	407817	HHCS M16 x 70MM GRADE 10.9	30
8	860591	GEAR BOX FLANGE W.A. - 745/865	2

625 TRAILER GEARBOX CIRCULATION SYSTEM



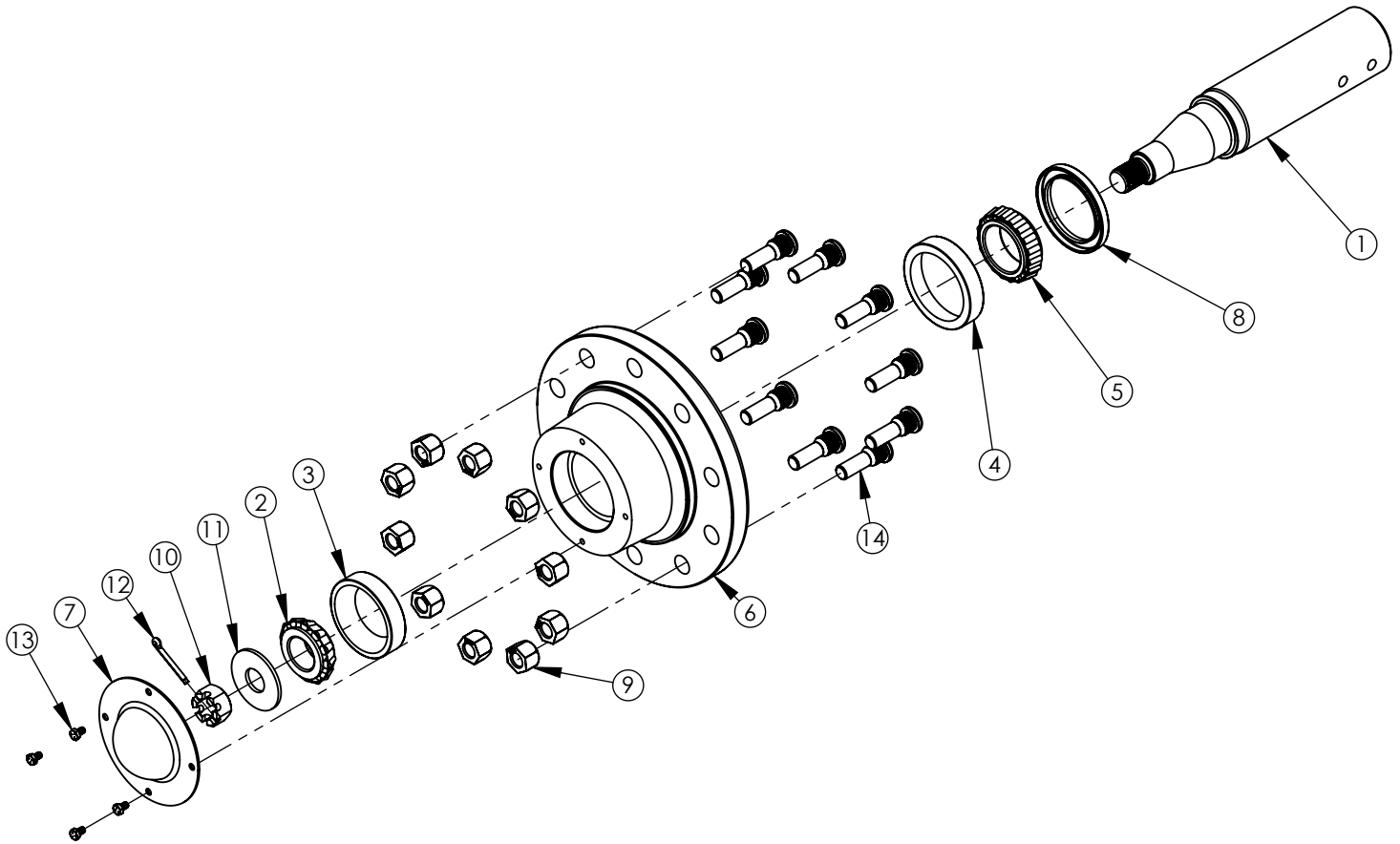
ITEM NO.	PART NO.	DESCRIPTION	QTY.
1	344146	COMER TEE - GEARBOX	2
2	362549	TANK BREATHER 8" DIP STICK	1
3	362555	SIGHT GAUGE 5"	1
4	368020	HYD ADAPTER 3/8"MP x 3/8"FPX 90°	2
5	368108	HYD ADAPTER STR 3/8"MBPP x 3/8"FP	2
6	368111	STRAIGHT ADAPTER 1/2" x 1/2"FP SWIVEL	7
7	368218	STRAIGHT ADAPT 1/2BSPP x 1/2FP SWIVEL	2
8	368608	STREET TEE 1/2"MP x 1/2"FP x 1/2"FP	1
9	368609	TEE 1/2"FP x 1/2"FP x 1/2"FP	1
10	402006	WASHER SPRING LOCK 3/8" MED PLTD	2
11	405652	HHCS 3/8"-16 x 3/4" #5 PLTD	2
12	781343	1/2 x 48 HOSE ASM 1/2MP	1
13	781597	1/2 x 54 HOSE ASM 1/2MP	1
14	781863	1/2 x 95 HOSE ASM 1/2MP	1
15	781865	1/2 x 96 HOSE ASM 1/2MP x 3/8MP	1
16	781864	1/2 x 30 HOSE ASM 1/2MP x 3/8MP	1
17	860064	GEARBOX RESERVOIR W.A.	1

625 TRAILER ASSEMBLY



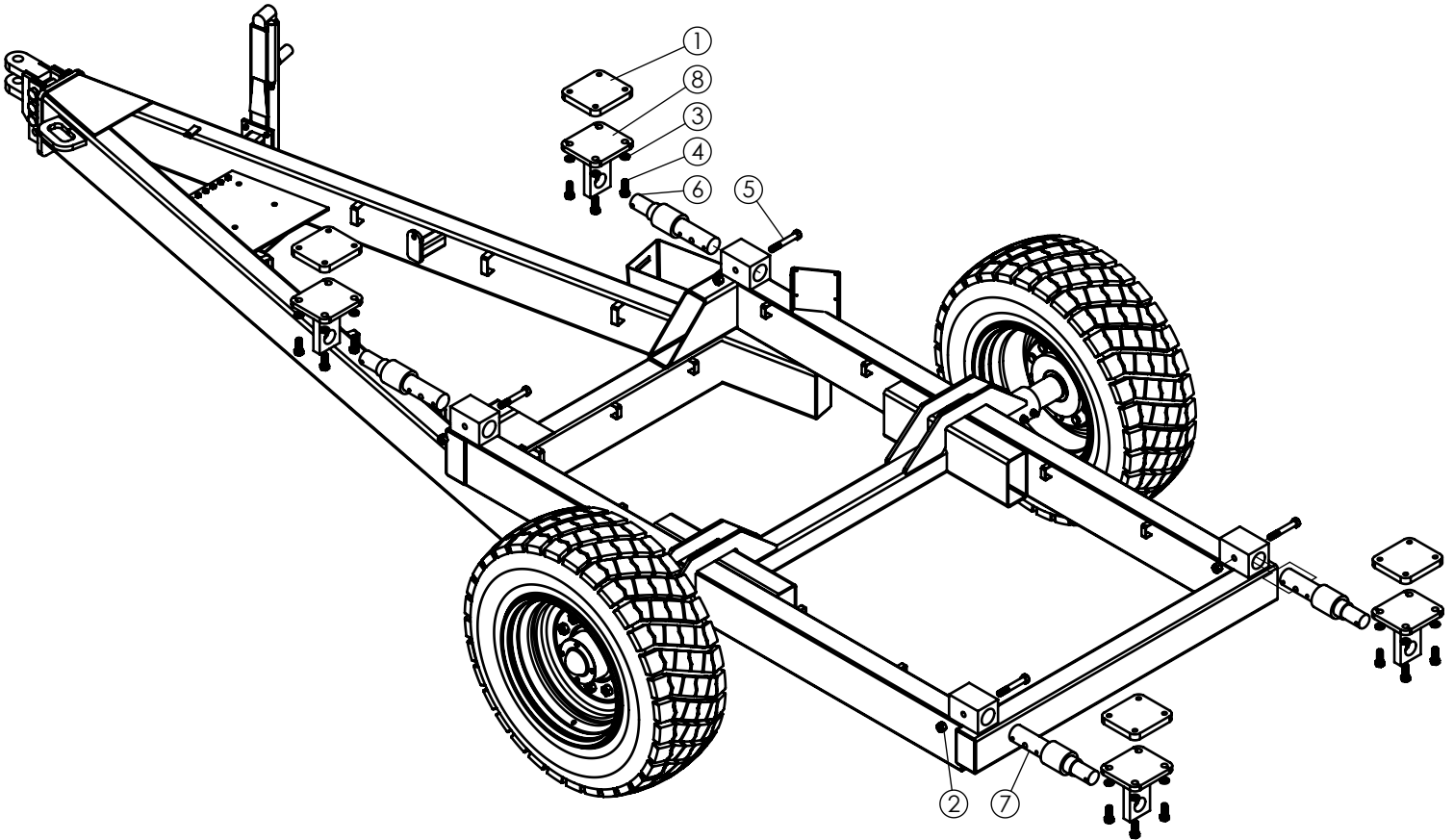
ITEM #	PART #	DESCRIPTION	QTY.
1	357400	BATTERY BOX W/STRAP	1
2	374109	BASE HITCH ISO-21244 PPI-301VH	1
3	400010	HEX NYLOC NUT M10-1.5, 8.8 PLTD	6
4	400208	HEX NUT 1/2"-13 #5 PLTD	4
5	400906	HEX NUT, 3/8"-16 CROWN LOC #5 PLTD	4
6	400916	HEX CROWN LOCKNUT, 1"-8 #5 PLTD	3
7	402008	SPRING LOCK WASHER 1/2" PLTD	4
8	405653	HHCS 3/8"-16 x 1" #5 PLTD	4
9	405716	HHCS 1/2"-13 x 5-1/2" #5 PLTD	4
10	405839	HHCS 1"-8 x 7 #5 PLTD	3
11	407827	HHCS M10-1.5 x 60 GRADE 10.9	6
12	781120	HUB & SPINDLE ASSY - 15,000 LB	2
13	781209	TIRE & WHEEL ASSY 15 x 22.5	2
14	860478	VXT JACK W.A. BOLT-ON	1
15	860630	625 TRAILER WA	1
16	860648	CLEVIS WA (4-1/2" BOLT SPACING)	1

625 TRAILER SPINDLE & HUB ASSEMBLY



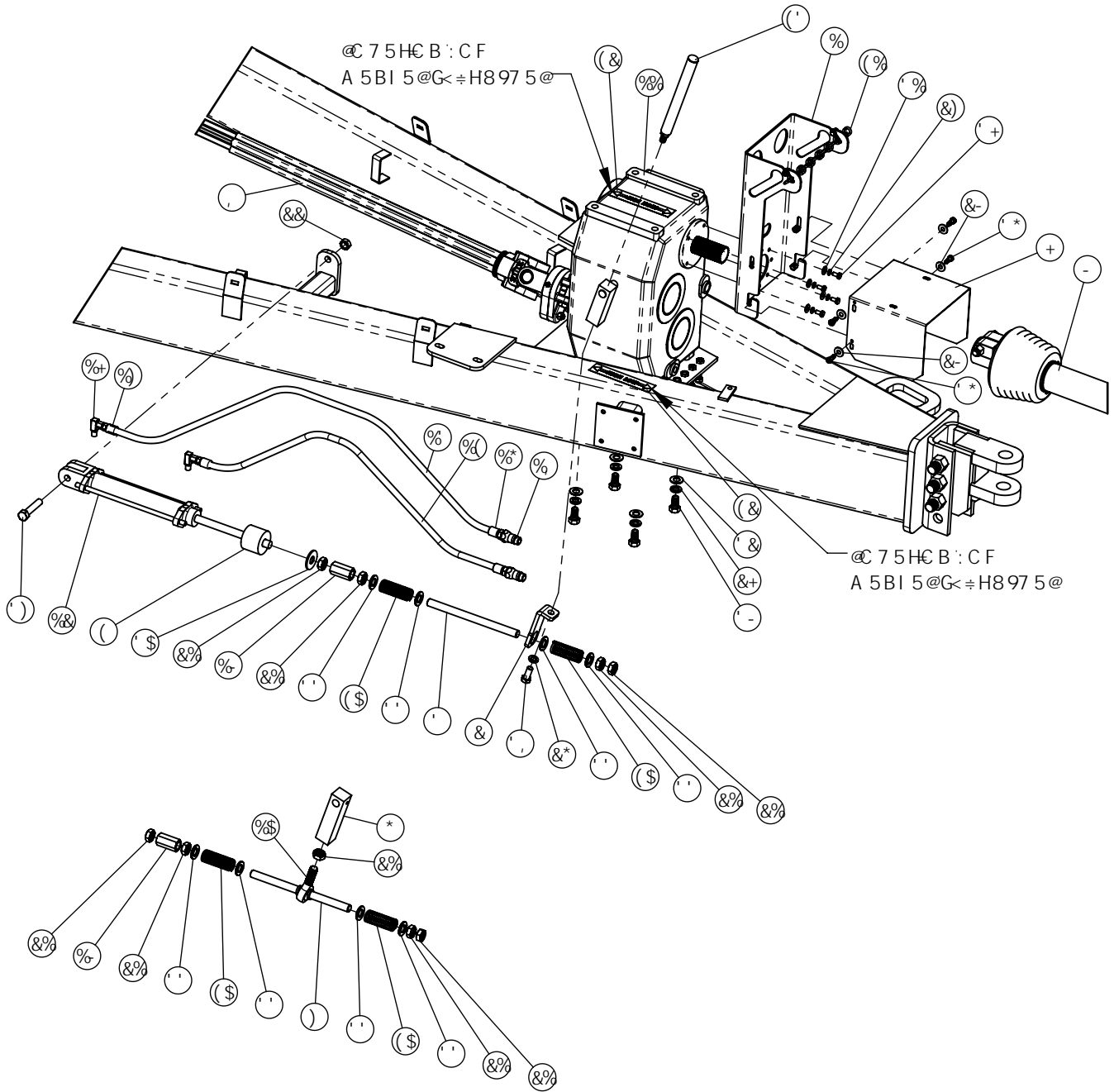
ITEM NO.	PART NO.	DESCRIPTION	QTY.
1	185558	SPINDLE, 3-1/2" DIA, 15000lb x 17-3/8"	1
2	342210	BEARING, 1.75 BORE Tim #460	1
3	342212	OUTER BEARING RACE 4-1/4" OD	1
4	342230	4.625 OD RACE - TIMKEN # 33462	1
5	342231	BRG, TAPERED ROLLER 2.75 I.D. #33275	1
6	372210	HUB 10 BOLT, 11-1/4 DIA. B/C -15K# (DUCT. IRON)	1
7	372308	DUST CAP, 12000 LB AXLE	1
8	372323	SEAL, C/R 33772 - 3.38 I.D.x 4.625 O.D.	1
9	400102	LUG NUT, BUDD RH 3/4"-16	10
10	401820	CASTLE NUT, 1-1/4"-12 HEX SAE PLT	1
11	402911	WASHER 3-1/4"OD x 1-7/32"ID x 3/16"THK	1
12	404006	COTTER PIN, 5/32" x 1-1/4"	1
13	405625	HHCS 5/16"-18 x 1/2" #5 PLTD	4
14	407729	STUD BOLT 3/4" X 2 3/4, W/1" SHOULDER	10

625 TRAILER SCALE FRAME ASSEMBLY



ITEM #	PART #	DESCRIPTION	QTY.
1	160016	SCALE PAD 7-1/8" x 7-7/8"	4
2	401112	HEX NUT, 3/4"-10 NYLOC #5 PLTD	4
3	402012	SPRING LOCK WASHER 3/4" PLTD	16
4	405779	HHCS 3/4"-10 x 2" #5 PLTD	16
5	405789	HHCS 3/4"-10 x 5" #5 PLTD	4
6	450824	WEIGH BAR 2 1/2", 21 FT. CORD	2
7	450837	WEIGH BAR 2 1/2", 30 FT. CORD	2
8	860426	2 1/2" WEIGHBAR MOUNT W.A.	4

625 TRAILER 2-SPEED GEARBOX WITH HYDRAULIC SHIFT AND SHIELDS

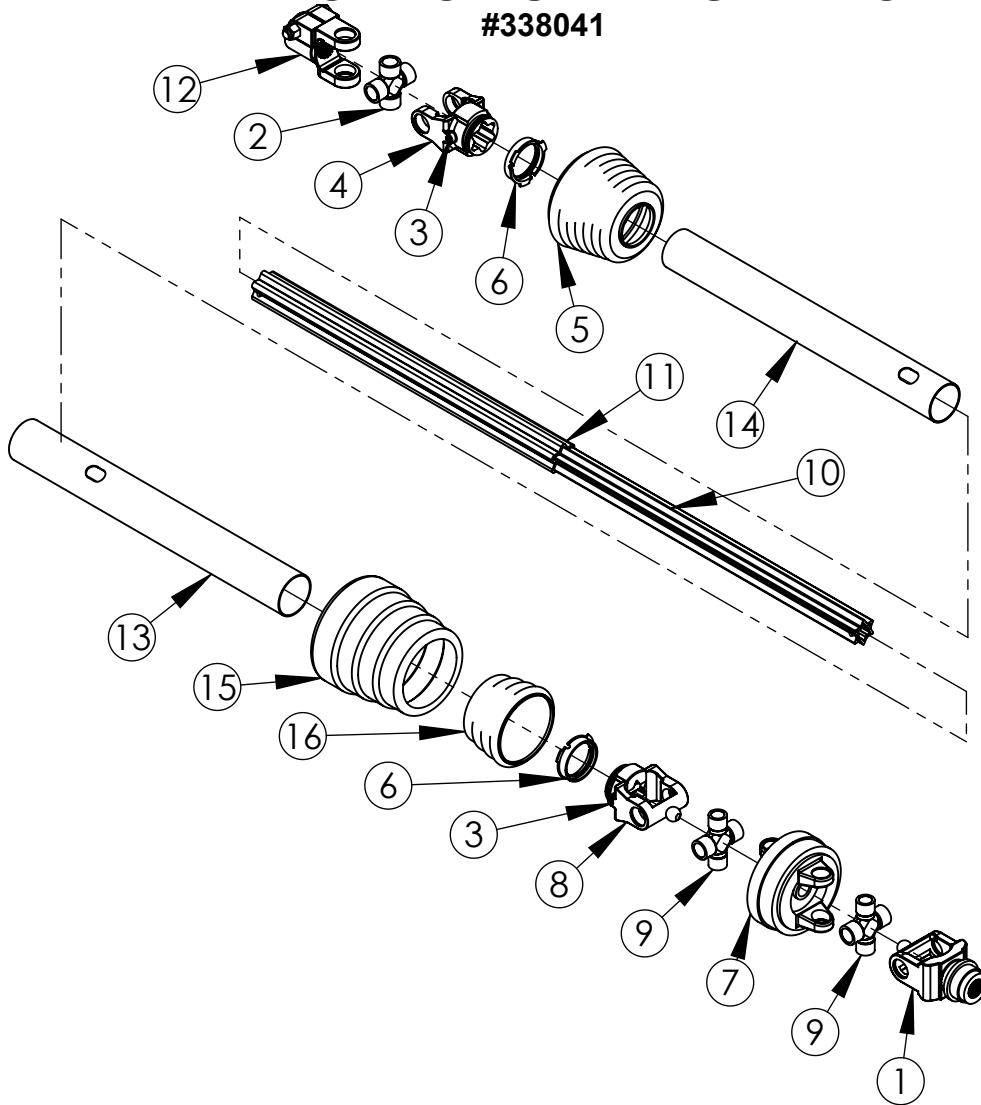


625 TRAILER 2-SPEED GEARBOX WITH HYDRAULIC SHIFT AND SHIELDS

ITEM NO.	PART NO.	DESCRIPTION	QTY.
1	161391	PTO SHIELD MOUNT BRACKET	1
2	161411	SHIFTER ARM	1
3	161412	ALL THREAD x 10-1/2"	1
4	161513	CYLINDER STOP x 2"	1
5	162771	ALL THREAD x 12-1/2"	1
6	162772	SHIFT LINKAGE BAR	1
7	185302	P.T.O. SHIELD	1
8	338038	DRIVE SHAFT, W2500 W/SHEAR CLUTCH	1
9	338041	DRIVESHAFT, WWE2580 397026	1
10	343025	BALL JOINT ROD END	1
11	344147	COMER GEARBOX 1.5 : 1	1
12	364035	HYDRAULIC CYLINDER 1-1/2" x 8"	1
13	366006	3/8"x 122" HYDRAULIC HOSE	1
14	366006	3/8" x 132 HYDRAULIC HOSE	1
15	367064	HOSE STEM 3/8" x 1/4" MP	2
16	367068	HOSE COUPLING, 3/8" x 1/2" MP MEGACRIMP	2
17	368011	HYD ADAPTER, 1/4MP x 1/4FPX 90° 1/16"ORF	2
18	368238	QD, MALE PIONEER, 1/2" FEMALE PIPE	2
19	400140	HEX COUPLING NUT 3/4"-16 #5 PLTD	2
20	400204	HEX NUT 1/4"-20 #5 PLTD	2
21	400712	HEX JAM NUT 3/4"-16	9
22	400910	HEX CROWN LOCNUT 5/8"-11 #9 PLTD	1
23	401106	HEX NUT, 3/8"-16 NYLOC #5 PLTD	6
24	402004	SPRING LOCK WASHER 1/4" PLTD	2
25	402005	SPRING LOCK WASHER 5/16" MED PLTD	4
26	402009	SPRING LOCK WASHER, 9/16" PLTD	1
27	402010	SPRING LOCK WASHER 5/8" PLTD	4
28	402404	FLAT WASHER 1/4" PLTD	4
29	402406	FLAT WASHER 3/8" PLTD	4
30	402412	FLAT WASHER 3/4" PLTD	1
31	402505	FLAT WASHER 5/16" SAE	4
32	402510	FLAT WASHER 5/8" SAE PLTD	4
33	402512	FLAT WASHER 3/4" SAE	8
34	405602	HHCS 1/4" -20 x 3/4" USS #5 PLTD.	2
35	405758	HHCS 5/8"-11 x 3" #5 PLTD	1
36	407410	SHOULDER BOLT, 3/8 x 3/8 LG x 5/16 THD	6
37	407804	HHCS 8mm x 16mm - 8.8 C.T.P.	4
38	407807	HHCS 14mm x 35mm - 8.8 C.T.P.	1
39	407821	HHCS M16 x 300MM GRADE 8.8	4
40	410015	COMPRESSION SPRING 1-1/4" OD x 4" x 0.148"	4
41	412020	PASSING LINK CHAIN 2/0 X 14 LINKS	1
42	440986	GEARBOX SPEED DECAL	2
43	860439	2-SPEED G-BOX SHIFTER WA	1

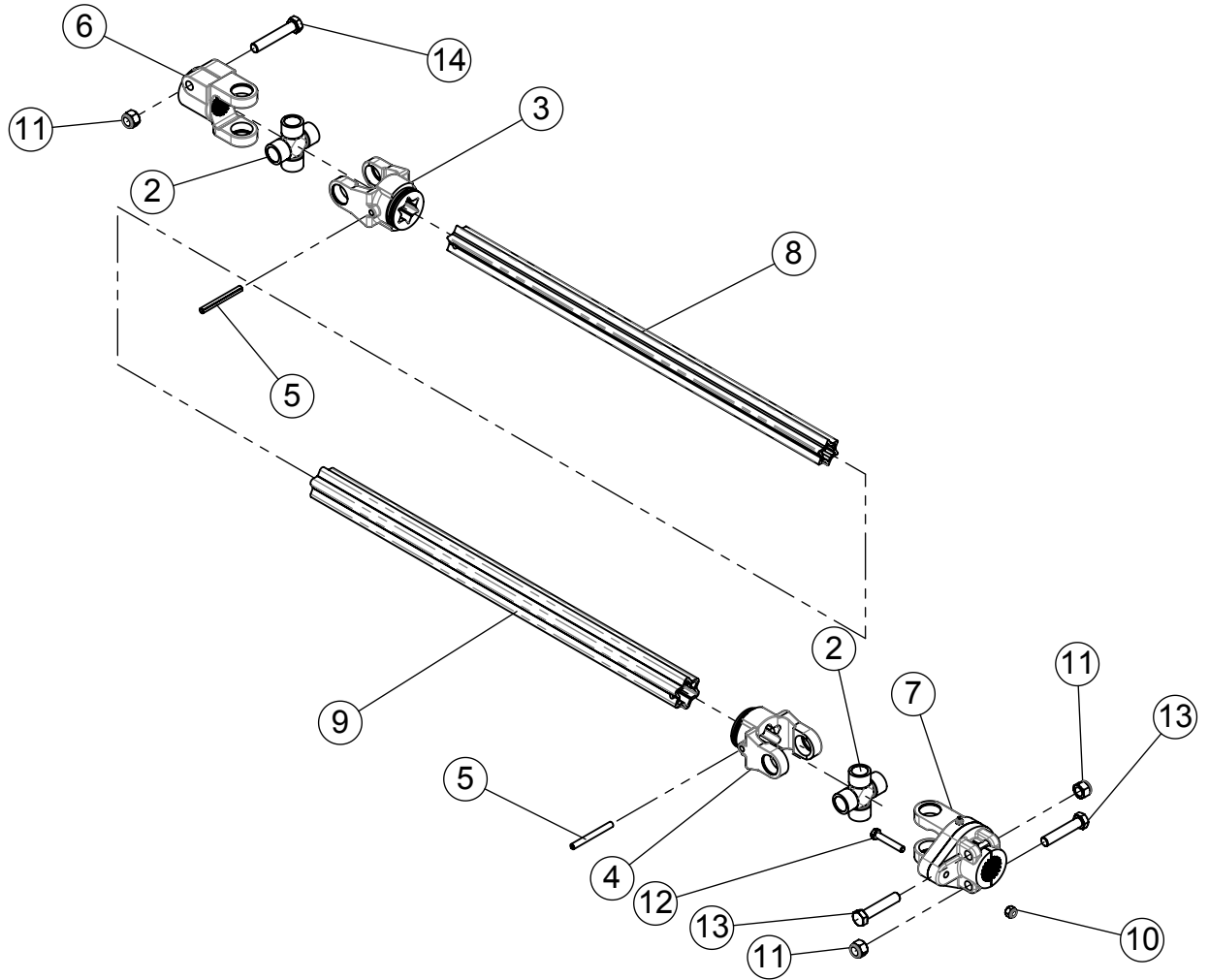
625 TRAILER DRIVELINE TRACTOR TO 2 SPEED GEARBOX

#338041



ITEM NO.	PART NO.	DESCRIPTION	QTY.
1	338404	YOKE 1-3/8" - 21 SPL QD W2500	1
2	338446	CROSS KIT W2500 312209	1
3	338473	ROLL DRIVE PIN W LTSH 10MM x 90MM	2
4	338454	INBOARD YOKE W2500 S5 097140	1
5	338473	ROLL DRIVE PIN, #10 MM x 90 MM	1
6	338489	BEARING RING SC25, 087276	2
7	338601	DOUBLE YOKE CVC W-2500 365725	1
8	338602	INBOARD YOKE W2500 S5 135294	1
9	338603	CV Cross Kit - W2580 384316	2
10	338604	INNER PROFILE W2500 S4GA 344144	1
11	338605	OUTER PROFILE & SLEEVE WA W2500 388535	1
12	338606	YOKE 1-3/4" 20 SPL W2500 325027	1
13	338607	OUTER SHIELD TUBE OVL - W-2500 397529	1
14	338041	WW E2580-CV DRIVE SHAFT	1
15	338609	CV CONE & BEARING ASSEMBLY -W-2500 386165	1
16	338610	SHIELD CONE 4 RIB 104786	1

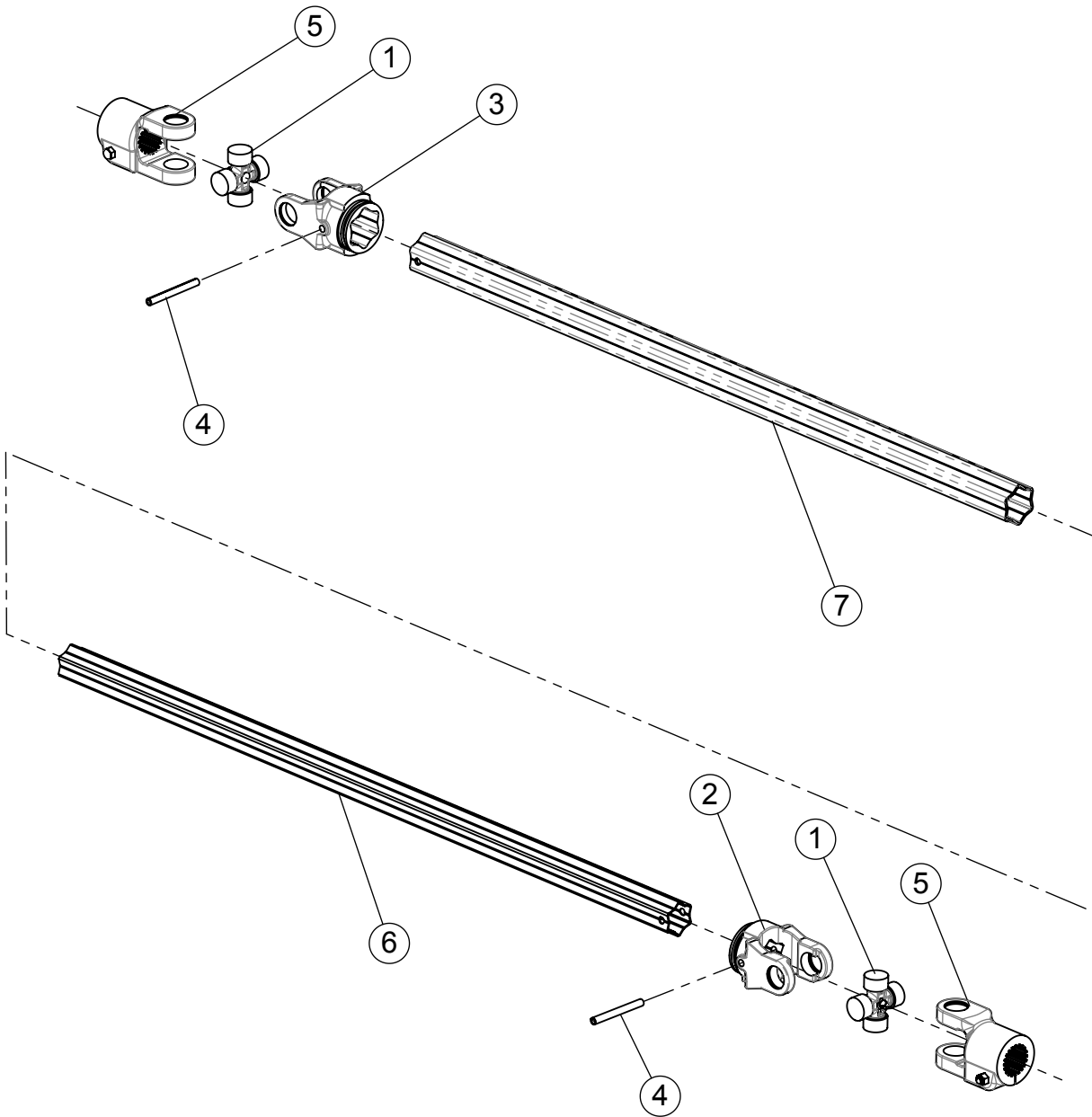
625 TRAILER DRIVELINE 2 SPEED GEARBOX TO PLANETARY GEARBOX #338038



ITEM #	PART #	DESCRIPTION	QTY
1	310748	1/8"-27 MALE PIPE GREASE ZERK	1
2	338446	CROSS KIT W2500 312209	2
3	338453	INBOARD YOKE W2500 S4 097133	1
4	338454	INBOARD YOKE W2500 S5 097140	1
5	338473	ROLL DRIVE PIN W LTSH 10MM x 90MM	2
6	338606	YOKE 1-3/4" 20 SPL W2500 325027	1
7	338637	YOKE 1-3/4" 20 SPL W/CLUTCH W2500 387505	1
8	338638	INNER PROFILE S4GA W2500 325280	1
9	338038	W2500 DRIVE SHAFT WITH SHEAR CLUTCH	1
10	400010	HEX NYLOC NUT M10-1.5, 8.8 PLTD	1
11	400014	HEX NYLOC NUT M16-2.0 #5 PLTD (In Item 6 & 7)	3
12	407800	HHCS M10-1.5 x 60MM, GRADE 10.9 PLTD	1
13	407841	HHCS M16-2.0 x 80, 8.8 #5 PLTD (In Item 7)	2
14	407842	HHCS M16-2.0 x 90, 8.8 #5 PLTD (In Item 6)	1

625 TRAILER DRIVELINE BETWEEN PLANETARY GEARBOXES

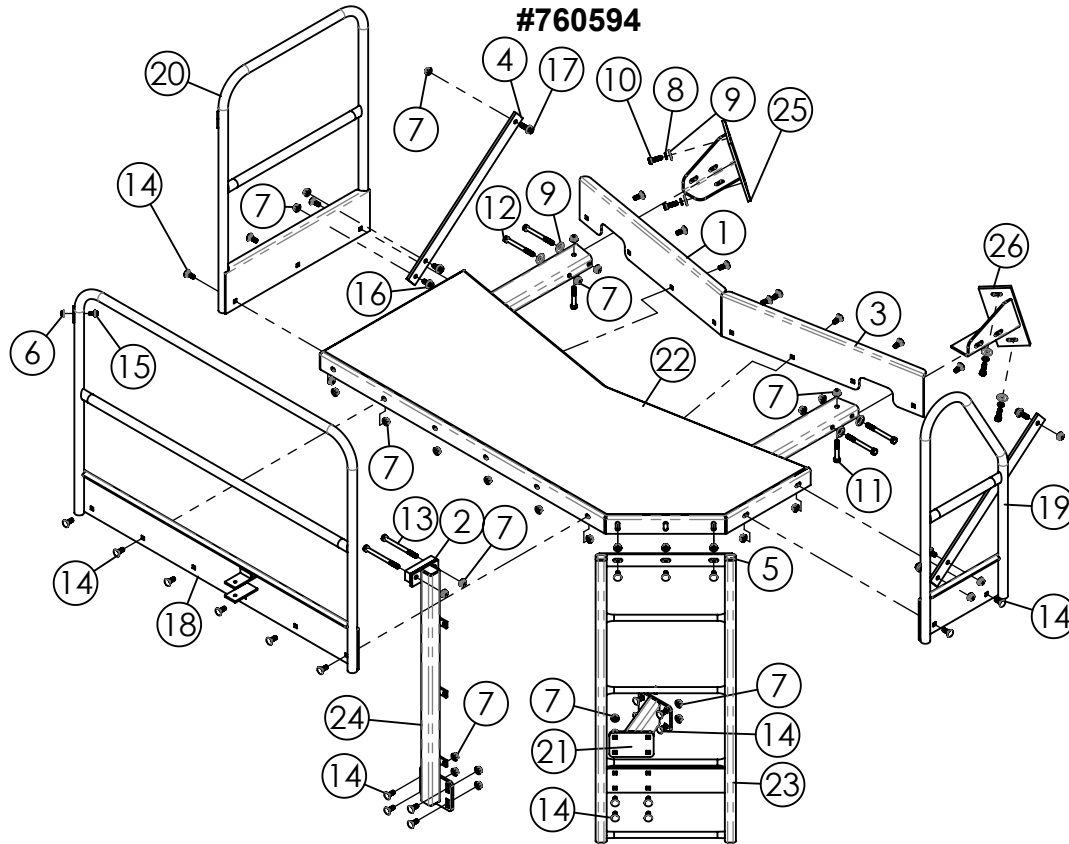
#338059



ITEM #	PART #	DESCRIPTION	QTY
1	338443	CROSS KIT 32mm x 76mm W2400	2
2	338450	INBOARD YOKE W2400 S4 356905	1
3	338452	INBOARD YOKE S5 W2400 356906	1
4	338473	ROLL DRIVE PIN W LTSH 10MM x 90MM	2
5	338612	YOKE 1-3/4" 20 SPLINE W2400 331053	2
6	338465	INNER PROFILE S4 W2400 391623 (NOTE: CUT TO 30")	1
7	338466	OUTER PROFILE S5 W2400 109485 (NOTE: CUT TO 30")	1

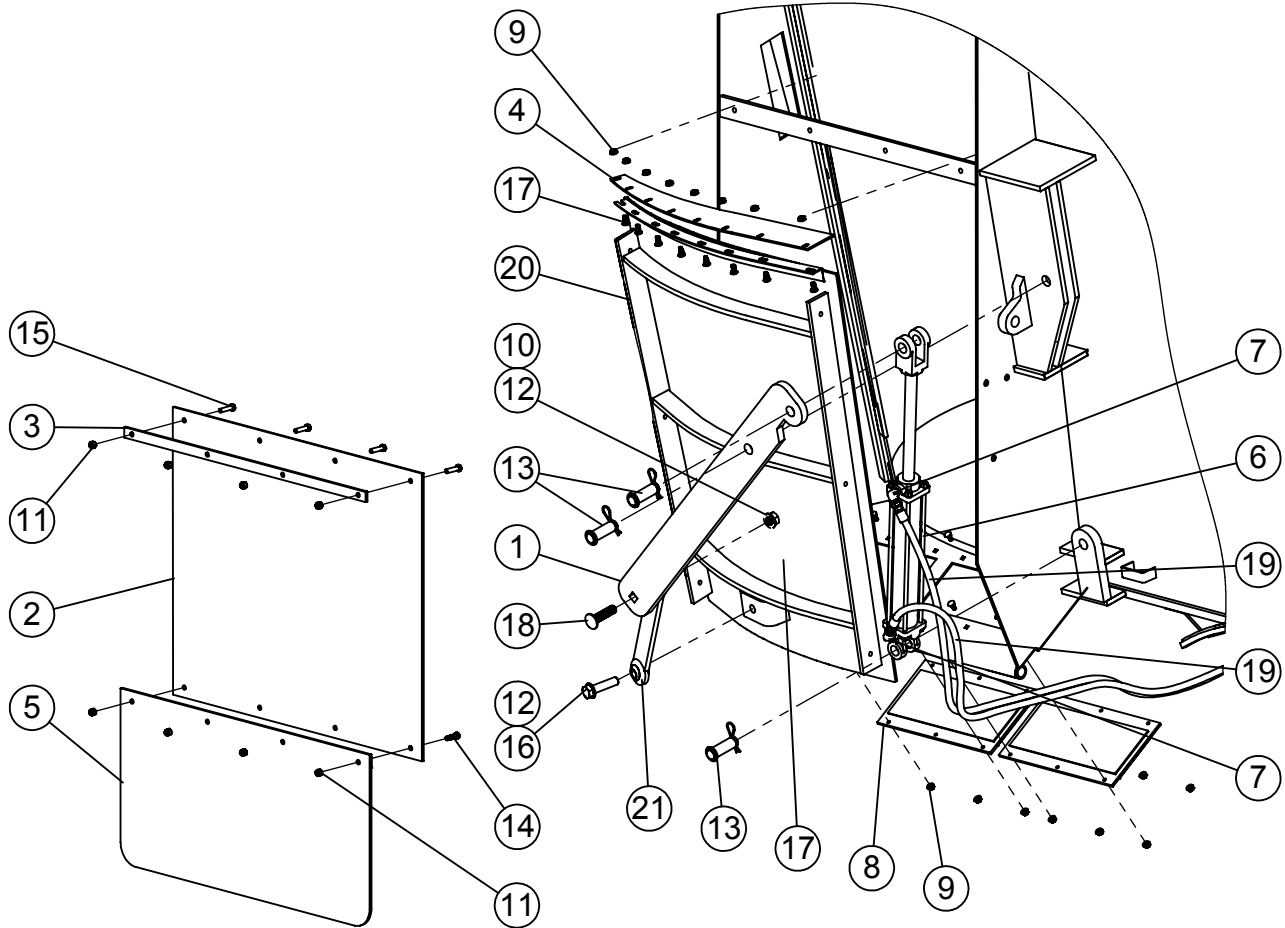
625 TRAILER PLATFORM ASSEMBLY

#760594



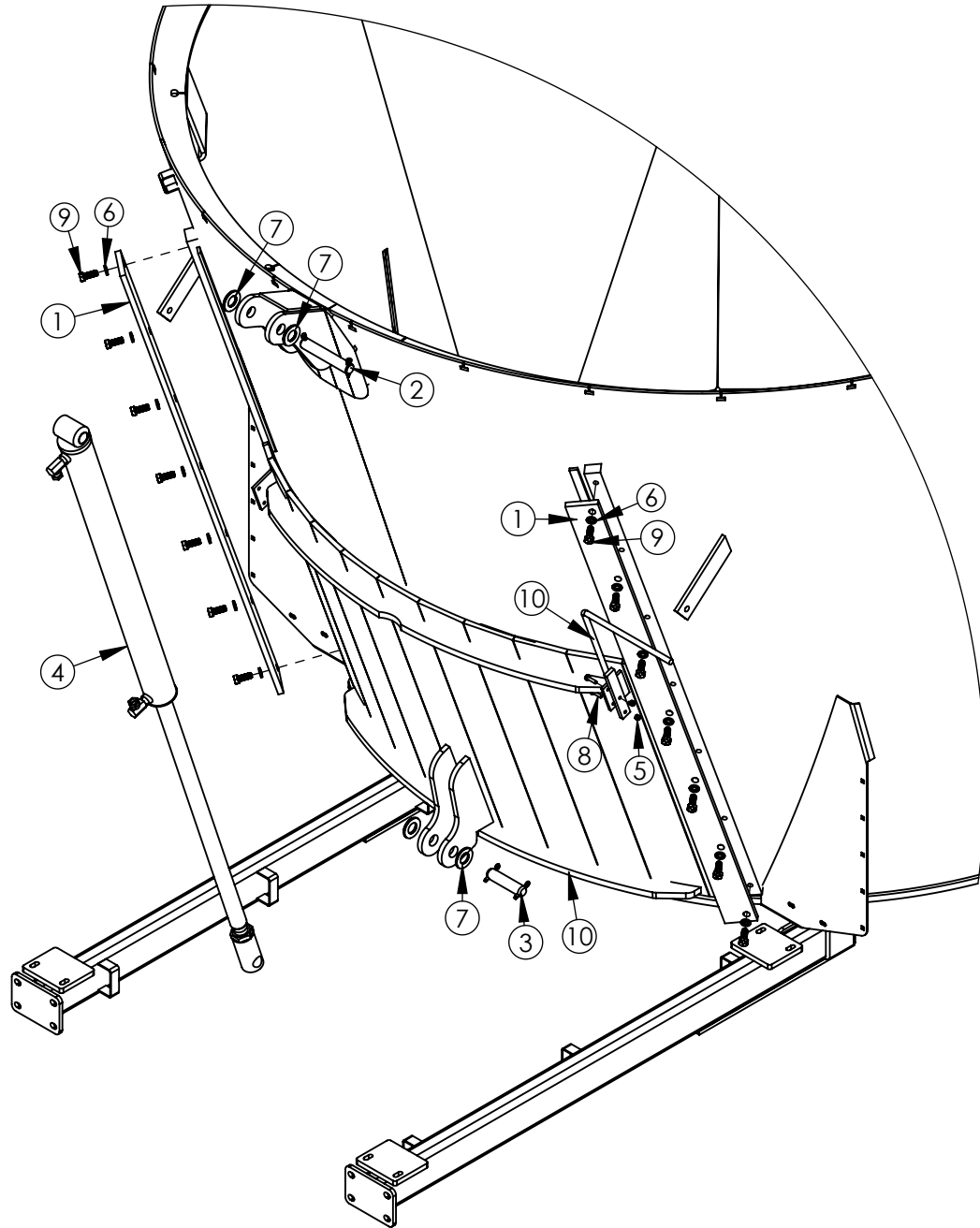
ITEM NO.	PART NO.	DESCRIPTION	QTY.
1	161908	KICKBOARD RH REAR	1
2	161926	SPACER PLATE	1
3	162071	KICKBOARD LH REAR	1
4	162285	PLATFORM SUPPORT BAR - 745	2
5	310954	CAPLUG-RIBBED-SQ 1-1/4" x 1.175"	2
6	400107	HEX NUT, 3/8"-16 SERRATED FLANGE #5	1
7	400114	HEX NUT, 1/2"-13 SERRATED FLANGE #5	48
8	402008	SPRING LOCK WASHER 1/2" PLTD	4
9	402408	FLAT WASHER 1/2" MED PLTD	10
10	405703	HHCS 1/2"-13 x 1-1/2" #5 PLTD	4
11	405709	HHCS 1/2"-13 x 3" #5 PLTD	2
12	405715	HHCS 1/2"-13 x 5" #5 PLTD	4
13	405717	HHCS 1/2"-13 x 6" #5 PLTD	2
14	407101	CHCS 1/2"-13 x 1-1/4" #5 PLTD	34
15	407900	HHCS 3/8"-16 x 3/4" SERRATED #5 PLTD	1
16	407911	HHCS SERRATED 1/2"-13 x 1" #5 PLTD	4
17	407913	HHCS 1/2"-13 x 1-1/2" SERRATED #5 PLTD	2
18	860543	FRONT HANDRAIL - TRL	1
19	860544	HANDRAIL LH	1
20	860545	RH HANDRAIL TRAILER	1
21	860549	PLATFORM MOUNT WA - VERT	1
22	860566	PLATFORM WA 745 TRAILER	1
23	860568	LADDER WA 625/745 TRAILER	1
24	860571	PLATFORM SUPPORT TUBE WA	1
25	860785	FRONT RH PLATFORM SUPPORT - 625	1
26	860786	FRONT LH PLATFORM SUPPORT - 625	1

625 VERTICAL TRAILER SIDE DOOR DISCHARGE



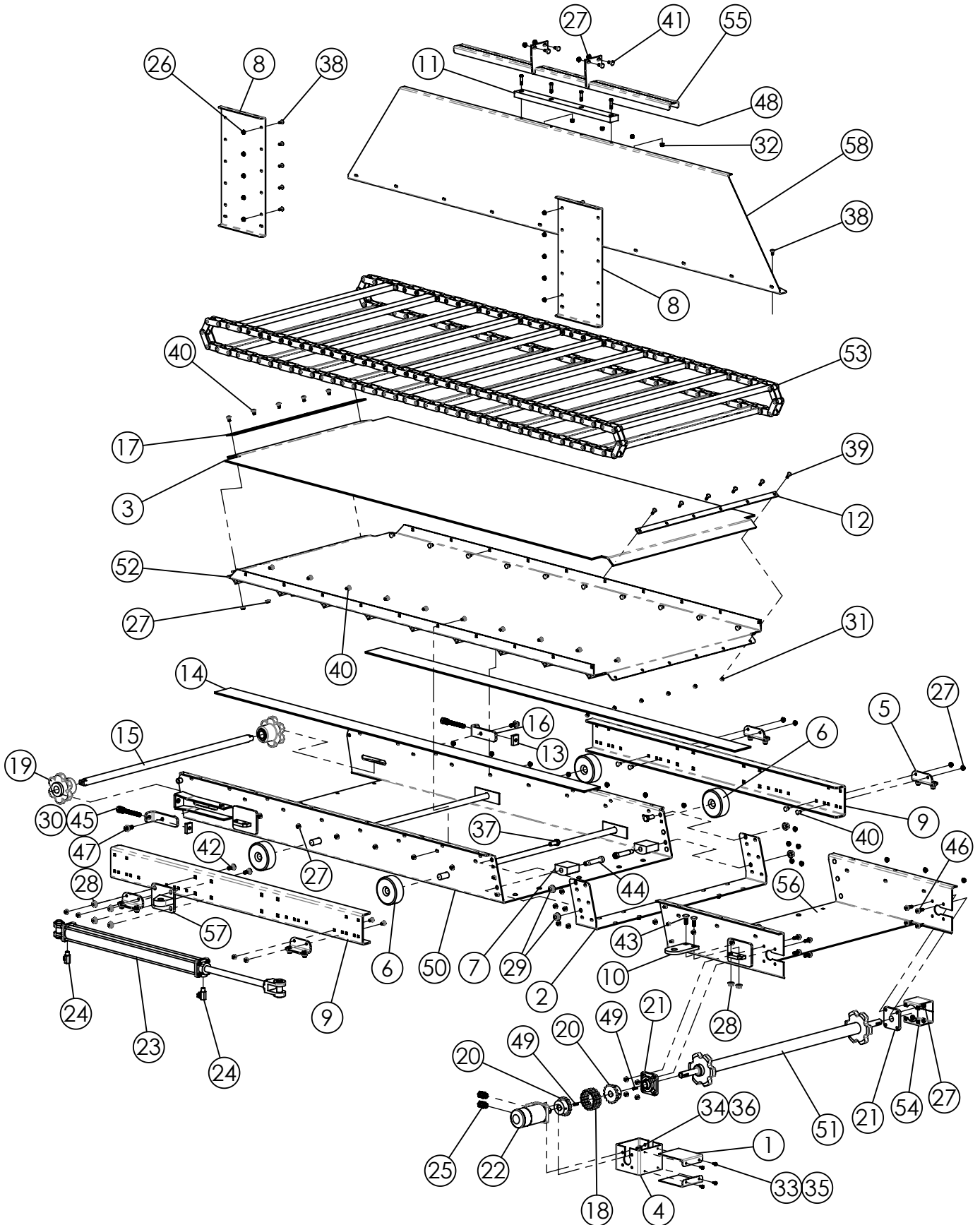
ITEM #	PART #	DESCRIPTION	QTY.
1	162341	DOOR LIFT ARM	1
2	162415	DEFLECTOR BELT	1
3	162417	BELTING STRAP	2
4	162419	DISCH DOOR TOP SEAL PLATE	1
5	162420	DISCH DOOR DEFLECTOR BELT PLATE	1
6	364058	HYDRAULIC CYLINDER, 2" x 12", 22-1/4 CC	1
7	368258	SWIVEL 90, ^o 3/8 MP x 3/8 FPX .047 ORIFICE	2
8	375004	ACRO PLATE MAGNET AM 1500	2
9	400106	HEX NUT, 5/16"-18 SER. FLANGE #5 PLTD	20
10	400912	HEX CROWN LOCK NUT 3/4"-10 #5 PLTD	2
11	401106	HEX NUT, 3/8"-16 NYLOC #5 PLTD	8
12	402512	FLAT WASHER 3/4" SAE	2
13	404211	PIN 1" x 2-3/4", CYLINDER PIN	3
14	405654	HHCS 3/8"-16 x 1-1/4" #5 PLTD	4
15	405655	HHCS 3/8"-16 x 1 1/2" #5 PLTD	4
16	405783	HHCS 3/4-10 x 3" #5 PLTD	1
17	407020	CHCS 5/16"-18 x 3/4" #5 PLTD	20
18	407142	CHCS 3/4" x 3" #5 PLTD	1
19	781389	3/8 x 255 HOSE ASM 3/8MP x 1/2MP	2
20	860671	865 LH DISCHARGE DOOR WA	1
21	860672	DOOR LIFT BAR	1

625 TRAILER FRONT CENTER DOOR



ITEM NO.	PART NO.	DESCRIPTION	QTY.
1	160115	DOOR GUIDE BAR	2
2	160619	CYLINDER PIN 5 7/8"	1
3	160620	CYLINDER PIN 1" x 4 1/4"	1
4	364079	HYDRAULIC CYLINDER 2-1/2" x 31-1/4" x 42" C/L	1
5	401104	HEX NUT, NYLOC 1/4"-20 #5 PLTD	2
6	402008	SPRING LOCK WASHER 1/2" PLTD	14
7	402516	FLAT WASHER, 1" SAE	4
8	405604	HHCS 1/4"-20 x 1" #5 PLTD	2
9	405702	HHCS 1/2"-13 x 1-1/4" #5 PLTD	14
10	161983	VERTICAL DOOR 48" WIDE	1
11	860636	VERTICAL TRAILER DOOR MARKER W.A.	1

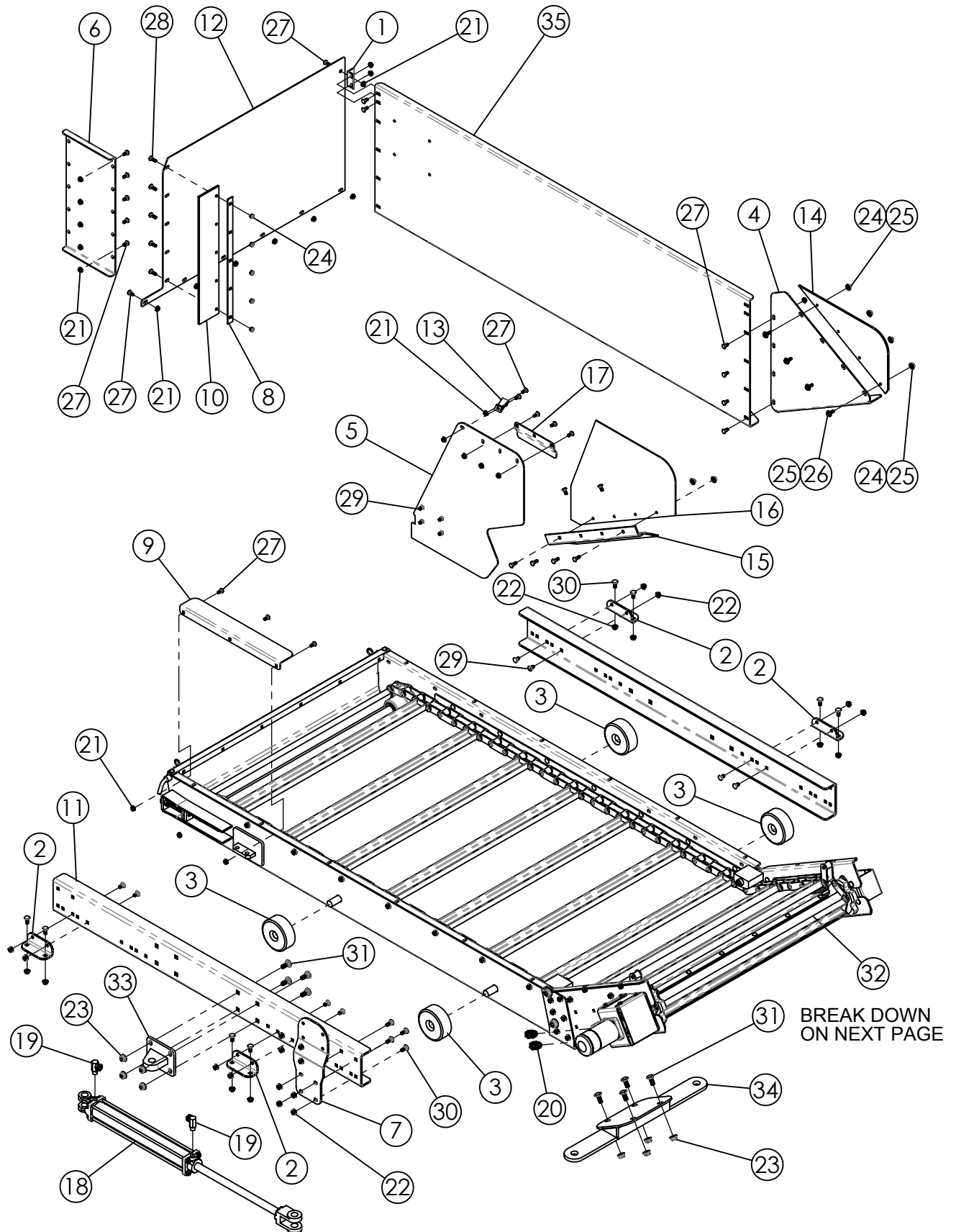
625 TRAILER 42" WIDE FLAT COVEYOR ASSEMBLY #660259



625 TRAILER 42" WIDE FLAT COVEYOR ASSEMBLY

ITEM #	PART #	DESCRIPTION	QTY.
1	161774	DRIVE CHAIN COVER	2
2	161777	CONVEYOR BOLT PLATE	1
3	161780	PLASTIC LINER FLAT CONV	1
4	161783	MOTOR MOUNT TUBE	1
5	161810	RAIL BOLT PLATE	4
6	161811	CONVEYOR SLIDE ROLLER	4
7	161830	CONVEYOR CHAIN HOLD DOWN	2
8	161872	CONVEYOR SIDE SHIELD	2
9	161934	CONVEYOR SLIDE RAIL FLAT & DOGLEG	2
10	161940	SLIDE CYLINDER BOLT-ON LUG	1
11	161944	PLASTIC SLIDE RAIL	1
12	162026	PLASTIC STRAP	1
13	162087	TAPPED TENSIONER BAR	2
14	162094	PLASTIC GLIDE 42"W FLAT CONVEYOR	2
15	162495	42W CONV IDLER SHAFT	1
16	162664	TENSION BRACKET - IDLER SPROCKET	2
17	162718	PLASTIC STRAP - FLAT CONV	1
18	320516	COUPLER CHAIN #50-2 RC x 16	1
19	330016	SPROCKET 81X 6-TOOTH NYLOIL INSERT	2
20	332606	COUPLER SPROCKET, 50B16 x 1"	2
21	340316	FLANGE BEARING 1" 4 BOLT RCJC	2
22	360015	HYDRAULIC MOTOR 17.9 CU IN.	1
23	364076	HYDRAULIC CYLINDER 2" x 30", 40-1/4" C-C	1
24	368007	HYD FITTING 3/8MP x 3/8FP 90 .109 ORF	2
25	368118	HYD STRAIGHT ADAPTER 7/8" MORB x 1/2" FP SWIVEL	2
26	400106	HEX NUT, 5/16"-18 SERRATED FLANGE #5 PLTD	19
27	400107	HEX NUT, 3/8"-16 SERRATED FLANGE #5	72
28	400114	HEX NUT, 1/2"-13 SERRATED FLANGE #5	6
29	400115	HEX NUT, 5/8"-11 SERRATED FLANGE #5 PLTD	4
30	400610	HEX JAM NUT, 5/8"-11 #5 PLTD	2
31	401105	HEX NUT, 5/16"-18 NYLOC #5 PLTD	6
32	401106	HEX NUT, 3/8"-16 NYLOC #5 PLTD	4
33	402004	SPRING LOCK WASHER 1/4" PLTD	4
34	402106	EXTERNAL STAR LOCKWASHER 3/8"	4
35	405601	HHCS 1/4"-20 x 5/8" USS #5 PLTD.	4
36	405652	HHCS 3/8"-16 x 3/4" #5 PLTD	4
37	405752	HHCS 5/8"-11 x 1-1/2" #5 PLTD	2
38	407020	CHCS 5/16"-18 x 3/4" #5 PLTD	19
39	407021	CHCS 5/16"-18 x 1" #5 PLTD	6
40	407039	CHCS 3/8"-16 x 3/4" #5 PLTD	52
41	407040	CHCS 3/8"-16 x 1" #5 PLTD	12
42	407101	CHCS 1/2"-13 x 1-1/4" #5 PLTD	4
43	407102	CHCS 1/2"-13 x 1-1/2" #5 PLTD	2
44	407411	SHOULDER BOLT, 5/8"-11 x 3/4" DIA x 3" LG	2
45	407476	HHCS 5/8"-11 x 5" FULL THREAD #5 PLTD	2
46	407904	HHCS 3/8"-16 x 1-1/4" SERRATED #5 PLTD	8
47	407912	HHCS 1/2"-13 x 1-1/4" SERRATED #5 PLTD	2
48	409001	SHCS, 3/8" x 1-1/2" #5 PLTD	4
49	409916	WOODRUFF KEY 1/4" x 1"	2
50	860512	BASE CONVEYOR WA 42" WIDE	1
51	860513	CONVEYOR DRIVE SHAFT 42"W	1
52	860516	CONVEYOR PAN WA	1
53	860517	81X CONVEYOR CHAIN WA 42" x 82P	1
54	860538	SHAFT COVER WA	1
55	860563	FRONT SHIELD SUPPORT CHANNEL	1
56	860565	FLAT CONVEYOR EXTENSION WA	1
57	860597	SLIDE CYL LUG WA	1
58	860602	CONV FRT SHLD FLAT SLIDING	1

625 TRAILER 42" WIDE 92" INCLINE CONVEYOR ASSEMBLY #660256

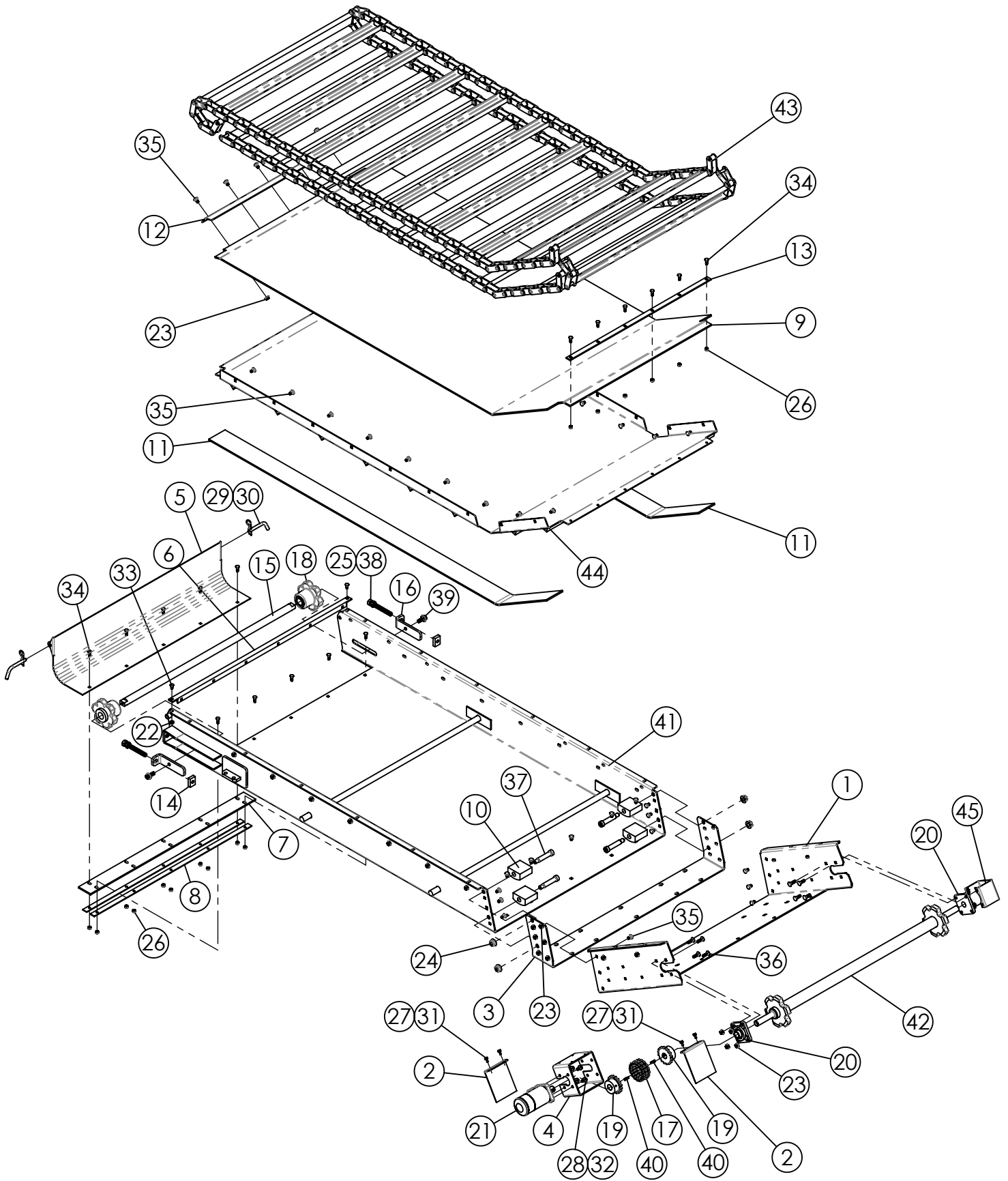


BREAK DOWN
ON NEXT PAGE

**625 TRAILER
42" WIDE 92" INCLINE CONVEYOR ASSEMBLY
#660256**

ITEM #	PART #	DESCRIPTION	QTY.
1	161383	MOUNT ANGLE	1
2	161810	RAIL BOLT PLATE	4
3	161811	CONVEYOR SLIDE ROLLER	4
4	161818	DOGLEG EXTENSION SHIELD	1
5	161819	DOGLEG CONVEYOR REAR FILLER	1
6	161820	DOGLEG CONVEYOR REAR FILLER	1
7	161821	CONVEYOR SHIELD BOLT PLATE	1
8	161867	RUBBER SUPPORT PLATE	1
9	161874	CONVEYOR FLAT FILL PLATE	1
10	161875	RUBBER CONVEYOR SIDE FILLER	1
11	161934	CONVEYOR SLIDE RAIL FLAT & DOGLEG	2
12	161965	CONVEYOR LH SIDE SHIELD	1
13	162032	STIFFNER BRACKET	1
14	162038	FRONT PLASTIC EXTENSION	1
15	162066	DOGLEG CONVEYOR CHAIN COVER	1
16	162068	DOGLEG CONVEYOR PLASTIC FILLER	1
17	162069	OFFSET BRACKET	1
18	364060	HYDRAULIC CYLINDER 2" x 16" 26-1/4" CC	1
19	368007	HYD FITTING 3/8MP x 3/8FP 90 .109 ORF	2
20	368118	STRAIGHT ADAPTER 7/8" MORB x 1/2" FP SW	2
21	400106	HEX NUT, 5/16"-18 SERRATED FLANGE #5 PLTD	36
22	400107	HEX NUT, 3/8"-16 SERRATED FLANGE #5	24
23	400114	HEX NUT, 1/2"-13 SERRATED FLANGE #5	8
24	401105	HEX NUT, 5/16"-18 NYLOC #5 PLTD	13
25	402405	FLAT WASHER 5/16" MED PLTD	12
26	405628	HHCS 5/16"-18 x 1" #5 PLTD	4
27	407020	CHCS 5/16"-18 x 3/4" #5 PLTD	36
28	407021	CHCS 5/16"-18 x 1" #5 PLTD	9
29	407039	CHCS 3/8"-16 x 3/4" #5 PLTD	12
30	407040	CHCS 3/8"-16 x 1" #5 PLTD	12
31	407101	CHCS 1/2"-13 x 1-1/4" #5 PLTD	8
32	760172	VERTICAL INCLINE CONV (BREAK DOWN ON NEXT PAGE)	1
33	860529	SLIDE CYLINDER LUG WA	1
34	860552	DOGLEG CYLINDER MOUNT WA	1
35	860572	CONVEYOR FRONT SHIELD WA	1

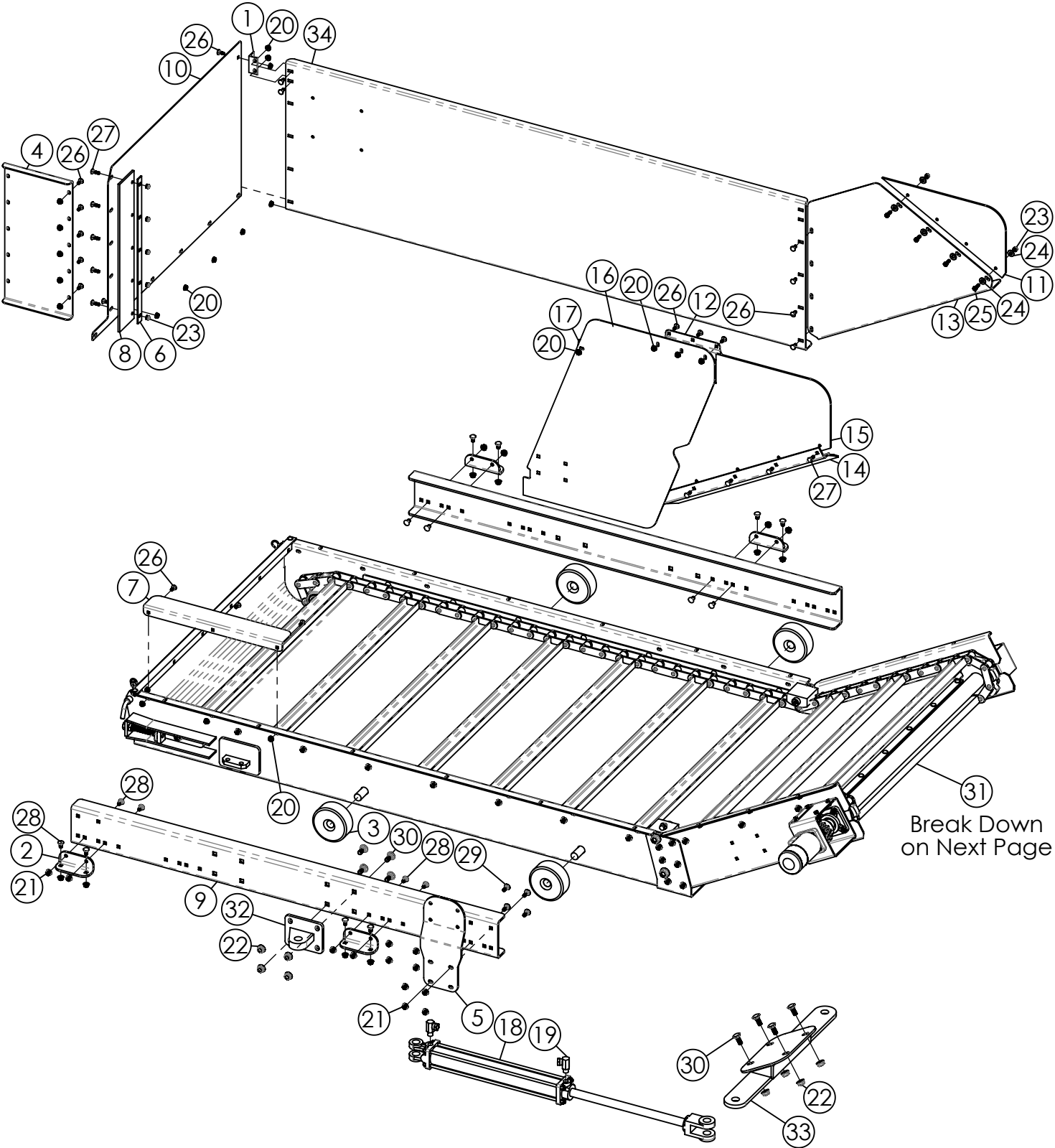
625 TRAILER 42" WIDE 92" INCLINE CONVEYOR ASSEMBLY #760172



**625 TRAILER
42" WIDE 92" INCLINE CONVEYOR ASSEMBLY
#760172**

ITEM #	PART #	DESCRIPTION	QTY.
1	161762	DOGLEG EXTENSION BOLT-ON	1
2	161774	DRIVE CHAIN COVER	2
3	161777	CONVEYOR BOLT PLATE	1
4	161783	MOTOR MOUNT TUBE	1
5	161784	CLEANOUT DOOR 42"W CONVEYOR	1
6	161786	CONVEYOR MOUNT ANGLE	1
7	161787	RUBBER HINGE 42"W CONVEYOR	1
8	161788	HINGE STRAP 42"W CONVEYOR	2
9	161789	PLASTIC LINER 42"W DOGLEG CONVEYOR	1
10	161830	CONVEYOR CHAIN HOLD DOWN	4
11	162022	PLASTIC GLIDE 42"W DOGLEG CONVEYOR	2
12	162024	PLASTIC LINER HOLD DOWN STRAP	1
13	162026	PLASTIC STRAP	1
14	162087	TAPPED TENSIONER BAR	2
15	162495	42W CONV IDLER SHAFT	1
16	162664	TENSION BRACKET - IDLER SPROCKET	2
17	320516	COUPLER CHAIN #50-2 RC x 16	1
18	330016	SPROCKET 81X 6-TOOTH NYLOIL INSERT	2
19	332606	COUPLER SPROCKET, 50B16 x 1"	2
20	340316	FLANGE BEARING 1" 4 BOLT RCJC	2
21	360015	HYDRAULIC MOTOR 17.9 CU IN.	1
22	400106	HEX NUT, 5/16"-18 SERRATED FLANGE #5 PLTD	2
23	400107	HEX NUT, 3/8"-16 SERRATED FLANGE #5	48
24	400115	HEX NUT, 5/8"-11 SERRATED FLANGE #5 PLTD	4
25	400610	HEX JAM NUT, 5/8"-11 #5 PLTD	2
26	401105	HEX NUT, 5/16"-18 NYLOC #5 PLTD	16
27	402004	SPRING LOCK WASHER 1/4" PLTD	4
28	402106	EXTERNAL STAR LOCKWASHER 3/8"	4
29	404210	CLIPP PIN 5/32" x 2.94 # 10	2
30	404214	PIN, 1/2" x 3",RECEIVER HITCH	2
31	405601	HHCS 1/4"-20 x 5/8" USS #5 PLTD.	4
32	405652	HHCS 3/8"-16 x 3/4" #5 PLTD	4
33	407020	CHCS 5/16"-18 x 3/4" #5 PLTD	2
34	407021	CHCS 5/16"-18 x 1" #5 PLTD	16
35	407039	CHCS 3/8"-16 x 3/4" #5 PLTD	40
36	407041	CHCS 3/8"-16 x 1-1/4" #5 PLTD	8
37	407411	SHOULDER BOLT, 5/8"-11 x 3/4" DIA x 3" LG	4
38	407476	HHCS 5/8"-11 x 5" FULL THREAD #5 PLTD	2
39	407912	HHCS 1/2"-13 x 1-1/4" SERRATED #5 PLTD	2
40	409916	WOODRUFF KEY 1/4" x 1"	2
41	860512	BASE CONVEYOR WA 42" WIDE	1
42	860513	CONVEYOR DRIVE SHAFT 42"W	1
43	860520	81X CONVEYOR CHAIN WA 42" x 79P	1
44	860521	VERTICAL DOGLEG CONVEYOR PAN WA	1
45	860538	SHAFT COVER WA	1

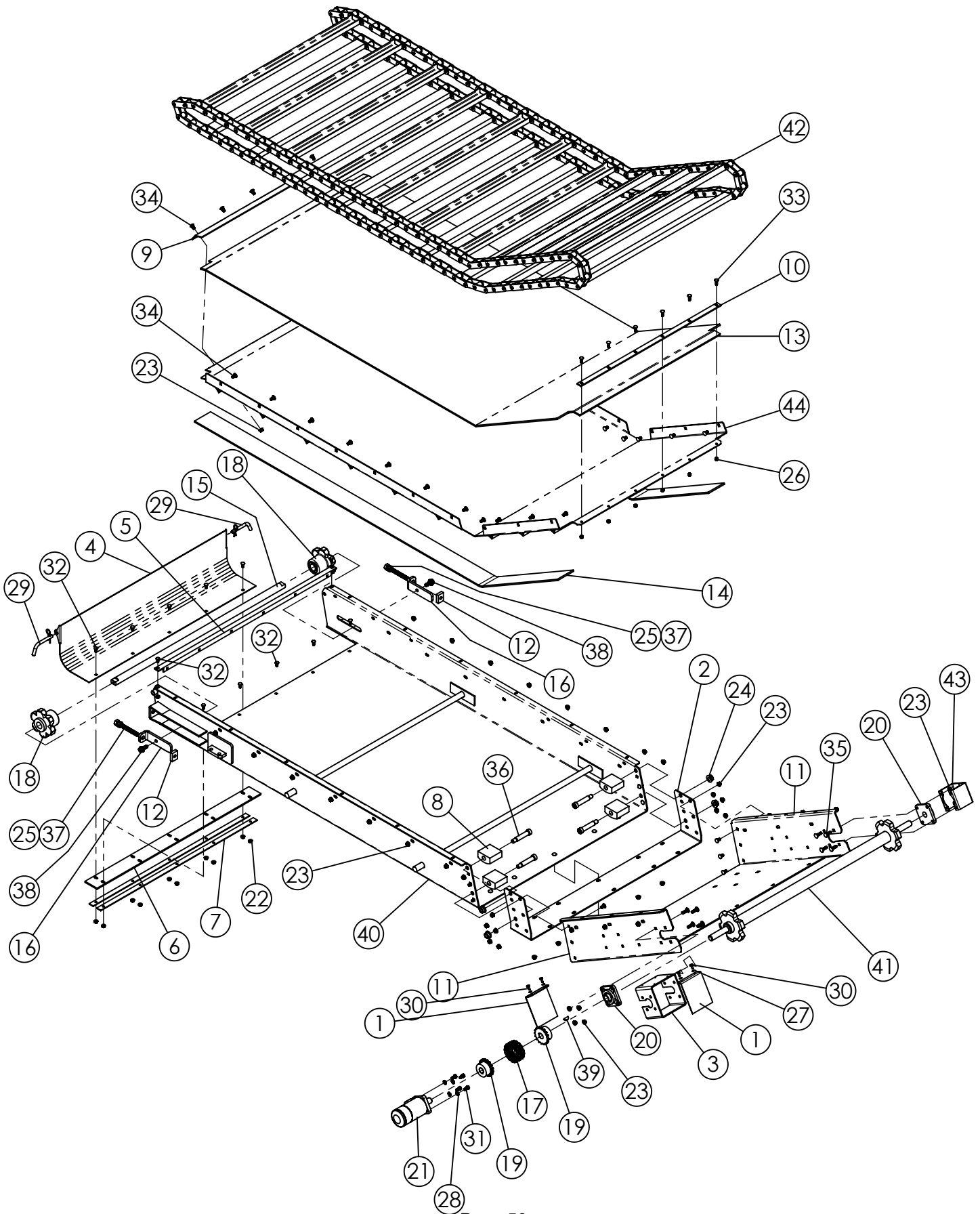
625 TRAILER 42" WIDE 102" EXTENDED DOGLEG CONVEYOR #660268



625 TRAILER
42" WIDE 102" EXTENDED DOGLEG CONVEYOR
#660268

ITEM #	PART #	DESCRIPTION	QTY.
1	161383	MOUNT ANGLE	1
2	161810	RAIL BOLT PLATE	4
3	161811	CONVEYOR SLIDE ROLLER	4
4	161820	DOGLEG CONVEYOR REAR FILLER	1
5	161821	CONVEYOR SHIELD BOLT PLATE	1
6	161867	RUBBER SUPPORT PLATE	1
7	161874	CONVEYOR FLAT FILL PLATE	1
8	161875	RUBBER CONVEYOR SIDE FILLER	1
9	161934	CONVEYOR SLIDE RAIL FLAT & DOGLEG	2
10	161965	CONVEYOR LH SIDE SHIELD	1
11	162038	FRONT PLASTIC EXTENSION	1
12	162069	OFFSET BRACKET	1
13	162078	DOGLEG EXTENSION SHIELD	1
14	162079	DOGLEG CONV CHAIN COVER	1
15	162080	DOGLEG CONVEYOR PLASTIC FILLER	1
16	162081	DOGLEG CONV REAR FILLER	1
17	162082	STIFFNER BRACKET	1
18	364060	HYDRAULIC CYLINDER 2" x 16" 26-1/4" CC	1
19	368007	HYD FITTING 3/8MP x 3/8FP 90 .109 ORF	2
20	400106	HEX NUT, 5/16"-18 SERRATED FLANGE #5 PLTD	38
21	400107	HEX NUT, 3/8"-16 SERRATED FLANGE #5	26
22	400114	HEX NUT, 1/2"-13 SERRATED FLANGE #5	8
23	401105	HEX NUT, 5/16"-18 NYLOC #5 PLTD	14
24	402405	FLAT WASHER 5/16" MED PLTD	13
25	405628	HHCS 5/16"-18 x 1" #5 PLTD	4
26	407020	CHCS 5/16"-18 x 3/4" #5 PLTD	38
27	407021	CHCS 5/16"-18 x 1" #5 PLTD	10
28	407039	CHCS 3/8"-16 x 3/4" #5 PLTD	20
29	407040	CHCS 3/8"-16 x 1" #5 PLTD	4
30	407101	CHCS 1/2"-13 x 1-1/4" #5 PLTD	8
31	760184	VERT CONV ASSY DOGLEG SLIDE 42" x 102" (Break Down On Next Page)	1
32	860529	SLIDE CYLINDER LUG WA	1
33	860552	DOGLEG CYLINDER MOUNT WA	1
34	860572	CONVEYOR FRONT SHIELD WA	1

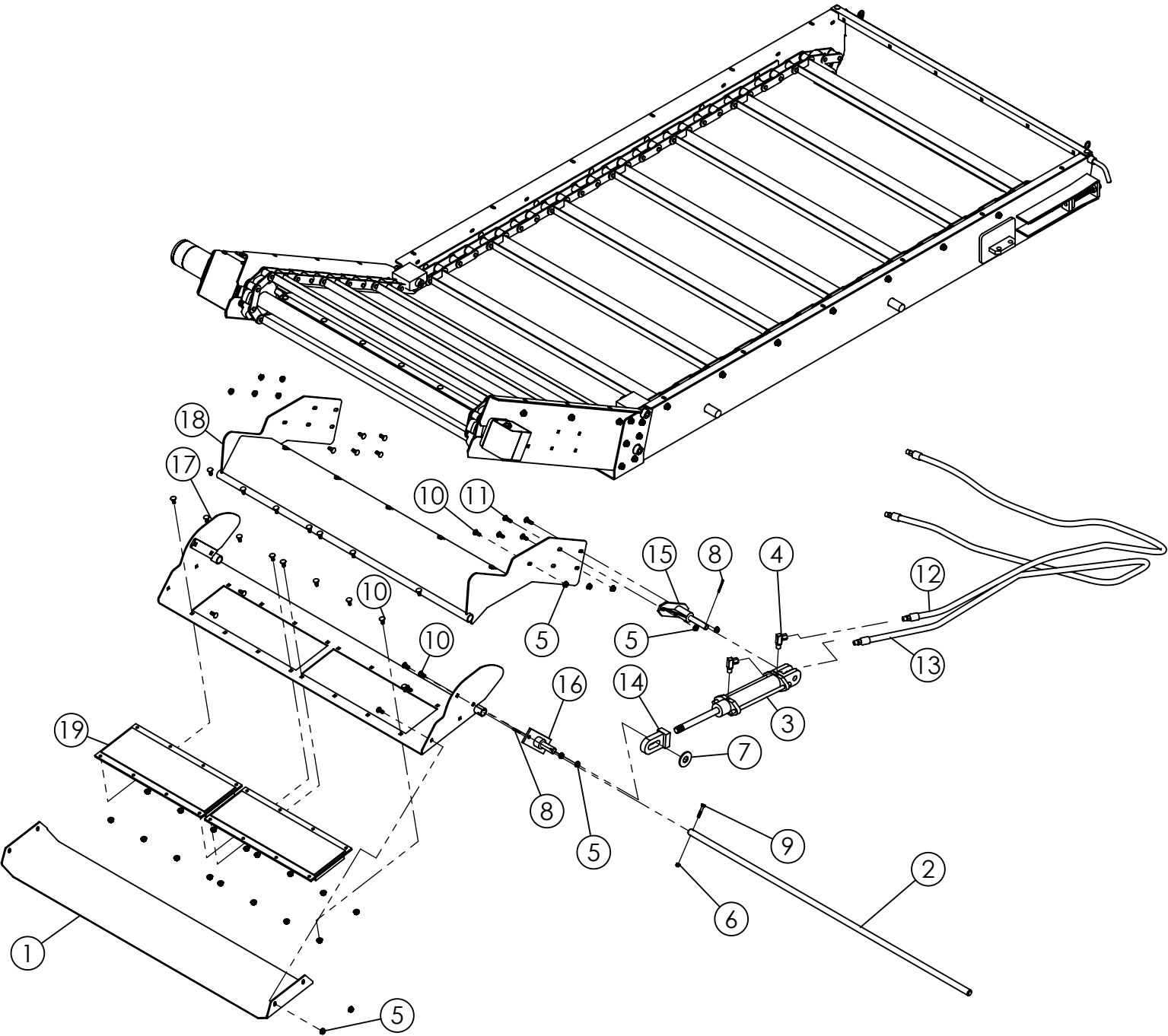
625 TRAILER 42" WIDE 102" INCLINE CONVEYOR ASSEMBLY #760184



625 TRAILER
42" WIDE 102" INCLINE CONVEYOR ASSEMBLY
#760184

ITEM #	PART #	DESCRIPTION	QTY.
1	161774	DRIVE CHAIN COVER	2
2	161777	CONVEYOR BOLT PLATE	1
3	161783	MOTOR MOUNT TUBE	1
4	161784	CLEANOUT DOOR 42"W CONVEYOR	1
5	161786	CONVEYOR MOUNT ANGLE	1
6	161787	RUBBER HINGE 42"W CONVEYOR	1
7	161788	HINGE STRAP 42"W CONVEYOR	2
8	161830	CONVEYOR CHAIN HOLD DOWN	4
9	162024	PLASTIC LINER HOLD DOWN STRAP	1
10	162026	PLASTIC STRAP	1
11	162083	DOGLEG EXTENSION BOLT-ON	1
12	162087	TAPPED TENSIONER BAR	2
13	162096	PLASTIC LINER 42W DOGLEG CONV	1
14	162097	PLASTIC GLIDE 42"W DOGLEG CONVEYOR	2
15	162495	42W CONV IDLER SHAFT	1
16	162664	TENSION BRACKET - IDLER SPROCKET	2
17	320516	COUPLER CHAIN #50-2 RC x 16	1
18	330016	SPROCKET 81X 6-TOOTH NYLOIL INSERT	2
19	332606	COUPLER SPROCKET, 50B16 x 1"	2
20	340316	FLANGE BEARING 1" 4 BOLT RCJC	2
21	360015	HYDRAULIC MOTOR 17.9 CU IN.	1
22	400106	HEX NUT, 5/16"-18 SERRATED FLANGE #5 PLTD	12
23	400107	HEX NUT, 3/8"-16 SERRATED FLANGE #5	52
24	400115	HEX NUT, 5/8"-11 SERRATED FLANGE #5 PLTD	4
25	400610	HEX JAM NUT, 5/8"-11 #5 PLTD	2
26	401105	HEX NUT, 5/16"-18 NYLOC #5 PLTD	6
27	402004	SPRING LOCK WASHER 1/4" PLTD	4
28	402106	EXTERNAL STAR LOCKWASHER 3/8"	4
29	404214	PIN, 1/2" x 3",RECEIVER HITCH	2
30	405601	HHCS 1/4"-20 x 5/8" USS #5 PLTD.	4
31	405652	HHCS 3/8"-16 x 3/4" #5 PLTD	4
32	407020	CHCS 5/16"-18 x 3/4" #5 PLTD	12
33	407021	CHCS 5/16"-18 x 1" #5 PLTD	6
34	407039	CHCS 3/8"-16 x 3/4" #5 PLTD	44
35	407041	CHCS 3/8"-16 x 1-1/4" #5 PLTD	8
36	407411	SHOULDER BOLT, 5/8"-11 x 3/4" DIA x 3" LG	4
37	407476	HHCS 5/8"-11 x 5" FULL THREAD #5 PLTD	2
38	407912	HHCS 1/2"-13 x 1-1/4" SERRATED #5 PLTD	2
39	409916	WOODRUFF KEY 1/4" x 1"	1
40	860512	BASE CONVEYOR WA 42" WIDE	1
41	860513	CONVEYOR DRIVE SHAFT 42"W	1
42	860517	81X CONVEYOR CHAIN WA 42" x 82P	1
43	860538	SHAFT COVER WA	1
44	860608	VERT DOGLEG CONV PAN WA	1

625 TRAILER 42" WIDE INCLINE CONVEYOR SPOUT ASSEMBLY #660257



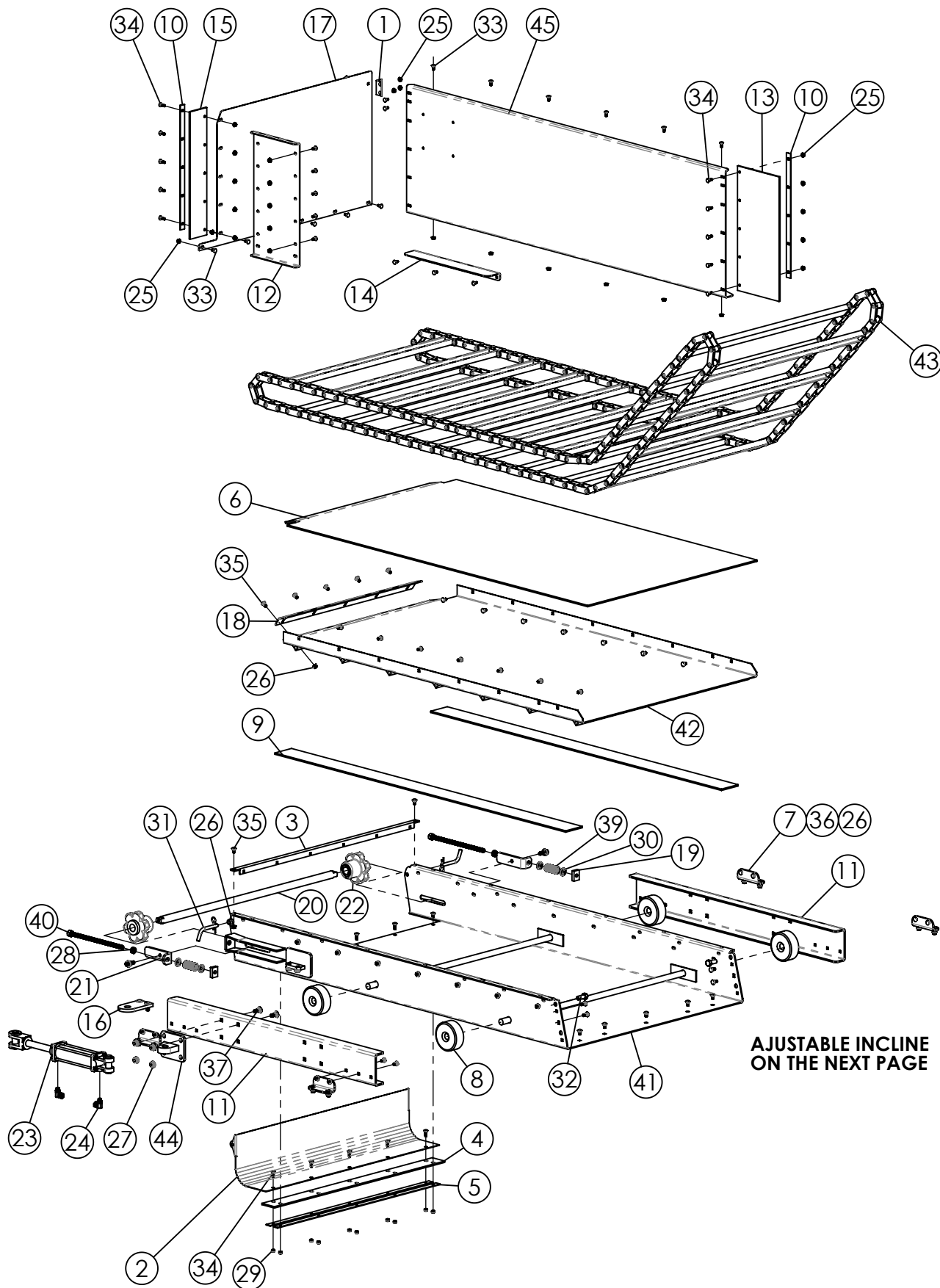
**625 TRAILER 42" WIDE
INCLINE CONVEYOR SPOUT ASSEMBLY
#660257**

ITEM #	PART #	DESCRIPTION	QTY.
1	161975	SPOUT MAGNET GUARD	1
2	161976	PIVOT PIN 42"W CONVEYOR SPOUT	1
3	364036	HYDRAULIC CYLINDER 1-1/2" x 6" 15-1/4" C-C	1
4	368011	HYD ADAPTER, 1/4MP x 1/4FPX 90° 1/16"ORF	2
5	400106	HEX NUT, 5/16"-18 SERRATED FLANGE #5 PLTD	37
6	401104	HEX NUT, NYLOC 1/4"-20 #5 PLTD	1
7	402412	FLAT WASHER 3/4" PLTD	1
8	404003	COTTER PIN, 5/32" x 1-1/4" PLTD	2
9	405606	HHCS 1/4"-20 x 1-1/2" #5 PLTD	1
10	407020	CHCS 5/16"-18 x 3/4" #5 PLTD	35
11	407021	CHCS 5/16"-18 x 1" #5 PLTD	2
12	781323	1/4 x 90 HYD HOSE ASSY 1/4 MP	1
13	781716	1/4 x 100 HYD HOSE ASSY 1/4 MP	1
14	850053	SPOUT CYCLINDER LUG WA	1
15	860589	SPOUT CYLINDER LUG WA	1
16	860590	SPOUT CYLINDER LUG WA ROD END	1
17	860593	SPOUT WA 42W CONV (TRAILER)	1
18	860594	SPOUT MOUNT WA	1
19	W157293	MAGNET 30 OZ	2

625 TRAILER

42" WIDE ADJUSTABLE INCLINE CONVEYOR ASSEMBLY

#660260(118") & #660261 (136")

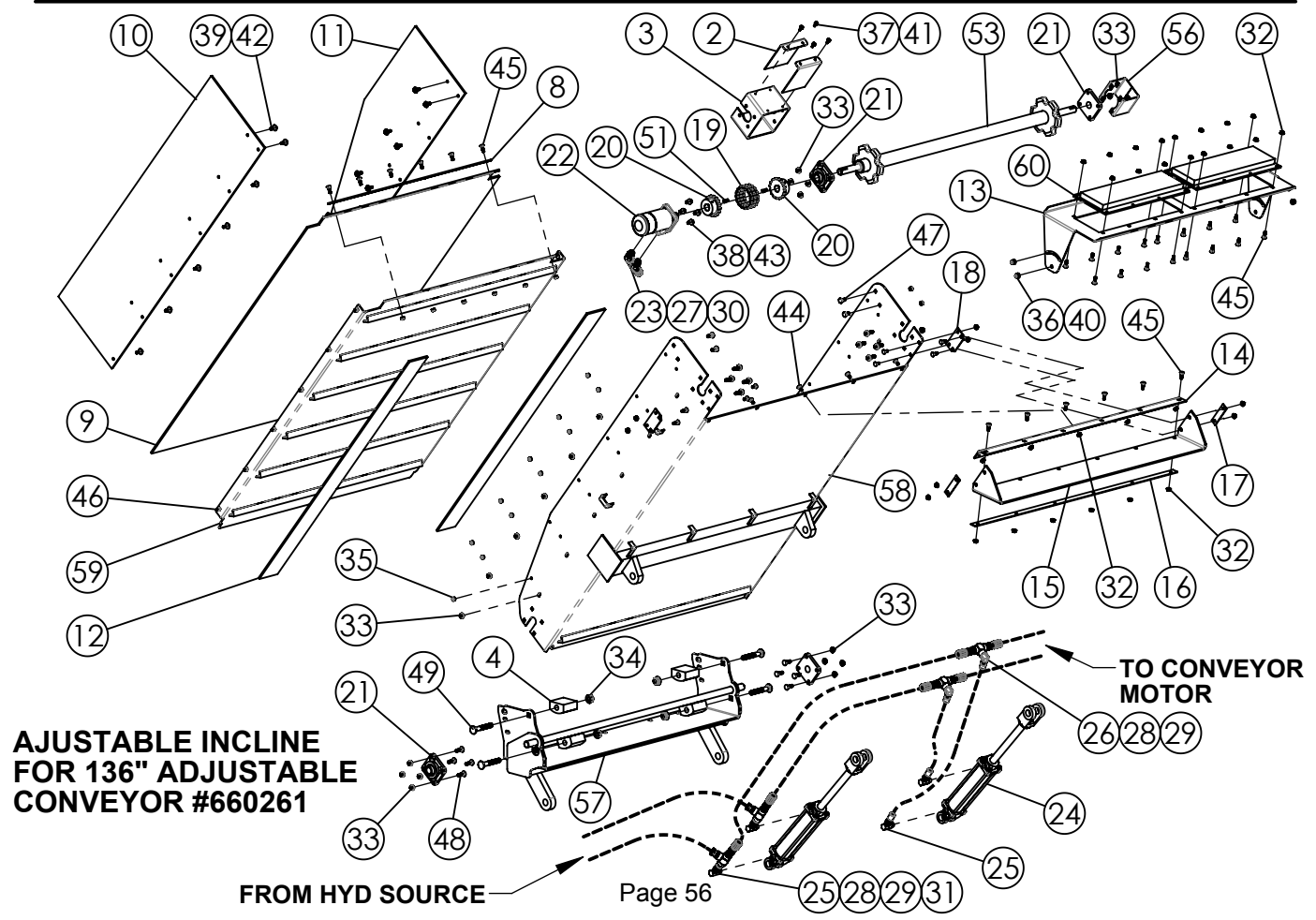
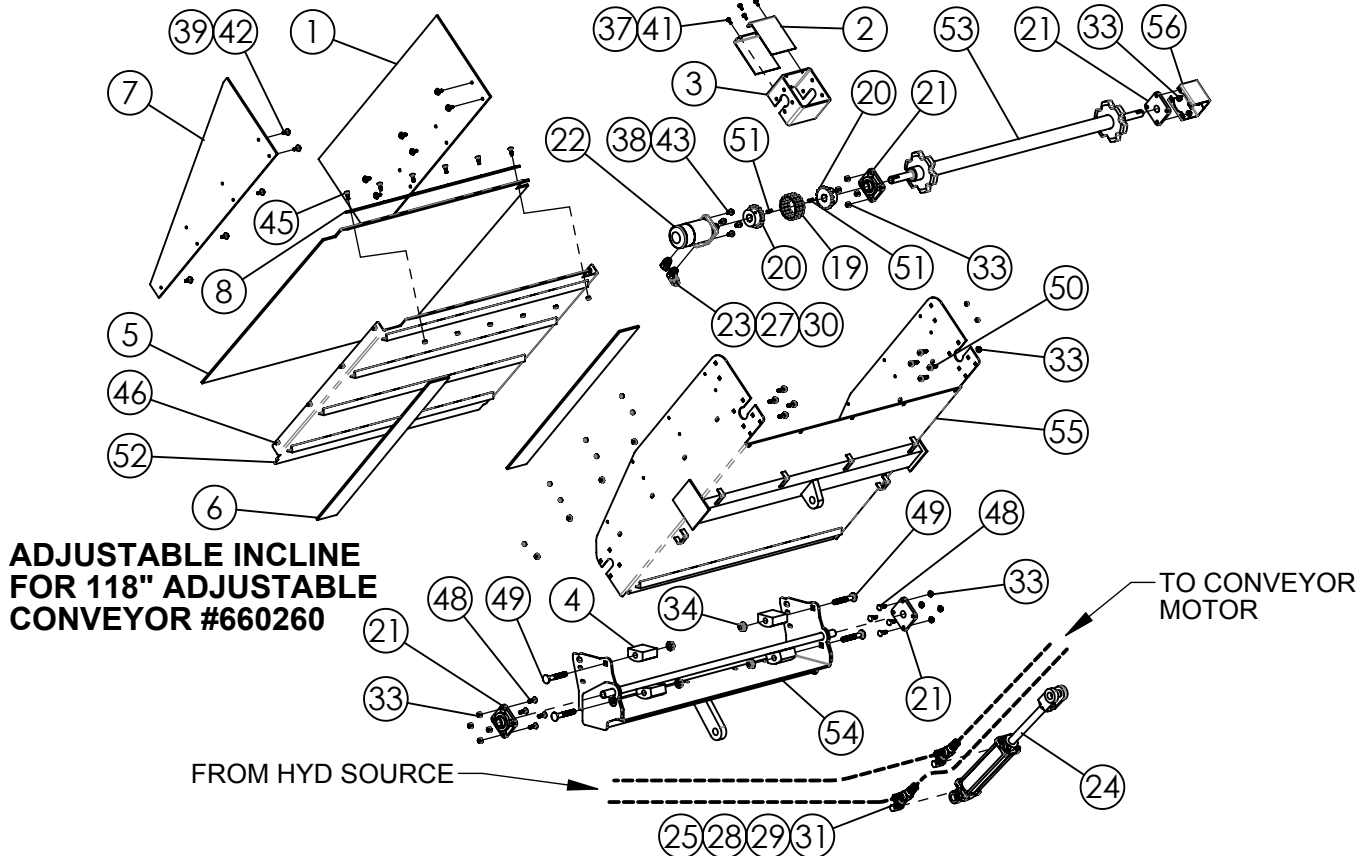


625 TRAILER
42" WIDE ADJUSTABLE INCLINE CONVEYOR ASSEMBLY
#660260(118") & #660261 (136")

ITEM #	PART #	DESCRIPTION	QTY.
1	161383	MOUNT ANGLE	1
2	161784	CLEANOUT DOOR 42"W CONVEYOR	1
3	161786	CONVEYOR MOUNT ANGLE	1
4	161787	RUBBER HINGE 42"W CONVEYOR	1
5	161788	HINGE STRAP 42"W CONVEYOR	2
6	161799	PLASTIC LINER 42"W ADJ CONVEYOR	1
7	161810	RAIL BOLT PLATE	4
8	161811	CONVEYOR SLIDE ROLLER	4
9	161863	CONVEYOR GLIDE STRIP	2
10	161867	RUBBER SUPPORT PLATE	2
11	161868	CONV SLIDE RAIL ADJ CONV	2
12	161872	CONVEYOR SIDE SHIELD	1
13	161873	CONVEYOR RUBBER FILLER	1
14	161874	CONVEYOR FLAT FILL PLATE	1
15	161875	RUBBER CONVEYOR SIDE FILLER	1
16	161940	SLIDE CYLINDER BOLT-ON LUG	1
17	161965	CONVEYOR LH SIDE SHIELD	1
18	162024	PLASTIC LINER HOLD DOWN STRAP	1
19	162087	TAPPED TENSIONER BAR	2
20	162495	42W CONV IDLER SHAFT	1
21	162664	TENSION BRACKET - IDLER SPROCKET	2
22	330016	SPROCKET 81X 6-TOOTH NYLOIL INSERT	2
23	364054	HYDRAULIC CYLINDER 2" x 6", 16-1/4" CC	1
24	368030	HYD SWIVEL 9/16"MOR x 3/8"FPS 90°	2
25	400106	HEX NUT, 5/16"-18 SERRATED FLANGE #5 PLTD	33
26	400107	HEX NUT, 3/8"-16 SERRATED FLANGE #5	37
27	400114	HEX NUT, 1/2"-13 SERRATED FLANGE #5	6
28	400610	HEX JAM NUT, 5/8"-11 #5 PLTD	2
29	401105	HEX NUT, 5/16"-18 NYLOC #5 PLTD	10
30	402510	FLAT WASHER 5/8" SAE PLTD	4
31	404214	PIN, 1/2" x 3",RECEIVER HITCH	2
32	405752	HHCS 5/8"-11 x 1-1/2" #5 PLTD	2
33	407020	CHCS 5/16"-18 x 3/4" #5 PLTD	23
34	407021	CHCS 5/16"-18 x 1" #5 PLTD	20
35	407039	CHCS 3/8"-16 x 3/4" #5 PLTD	34
36	407040	CHCS 3/8"-16 x 1" #5 PLTD	12
37	407101	CHCS 1/2"-13 x 1-1/4" #5 PLTD	6
38	407912	HHCS 1/2"-13 x 1-1/4" SERRATED #5 PLTD	2
39	410017	DIE SPRING, 1-1/4" x 4"	2
40	860489	ALL THREAD WA	2
41	860512	BASE CONVEYOR WA 42" WIDE	1
42	860522	ADJUSTABLE CONVEYOR FLAT PAN WA 42"W	1
43	860523	81X CONVEYOR CHAIN WA 42" x 98P, 118 ADJ CONV	1
	860607	81X CONVEYOR CHAIN WA 42" x 110P, 136" ADJ CONV	1
44	860529	SLIDE CYLINDER LUG WA	1
45	860572	CONVEYOR FRONT SHIELD WA	1

625 TRAILER

42" WIDE ADJUSTABLE INCLINE CONVEYOR ASSEMBLY

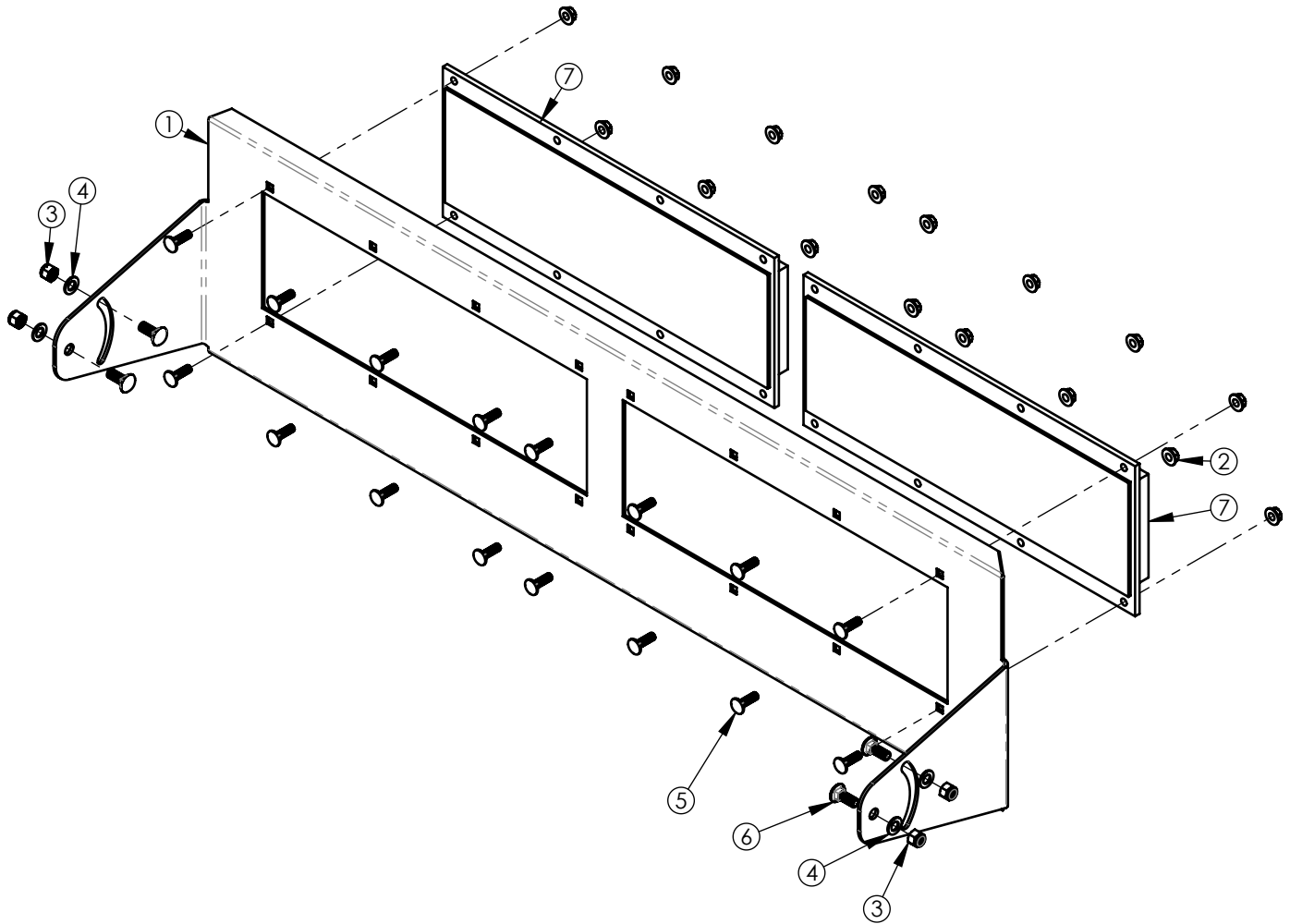


625 TRAILER

42" WIDE ADJUSTABLE INCLINE CONVEYOR ASSEMBLY

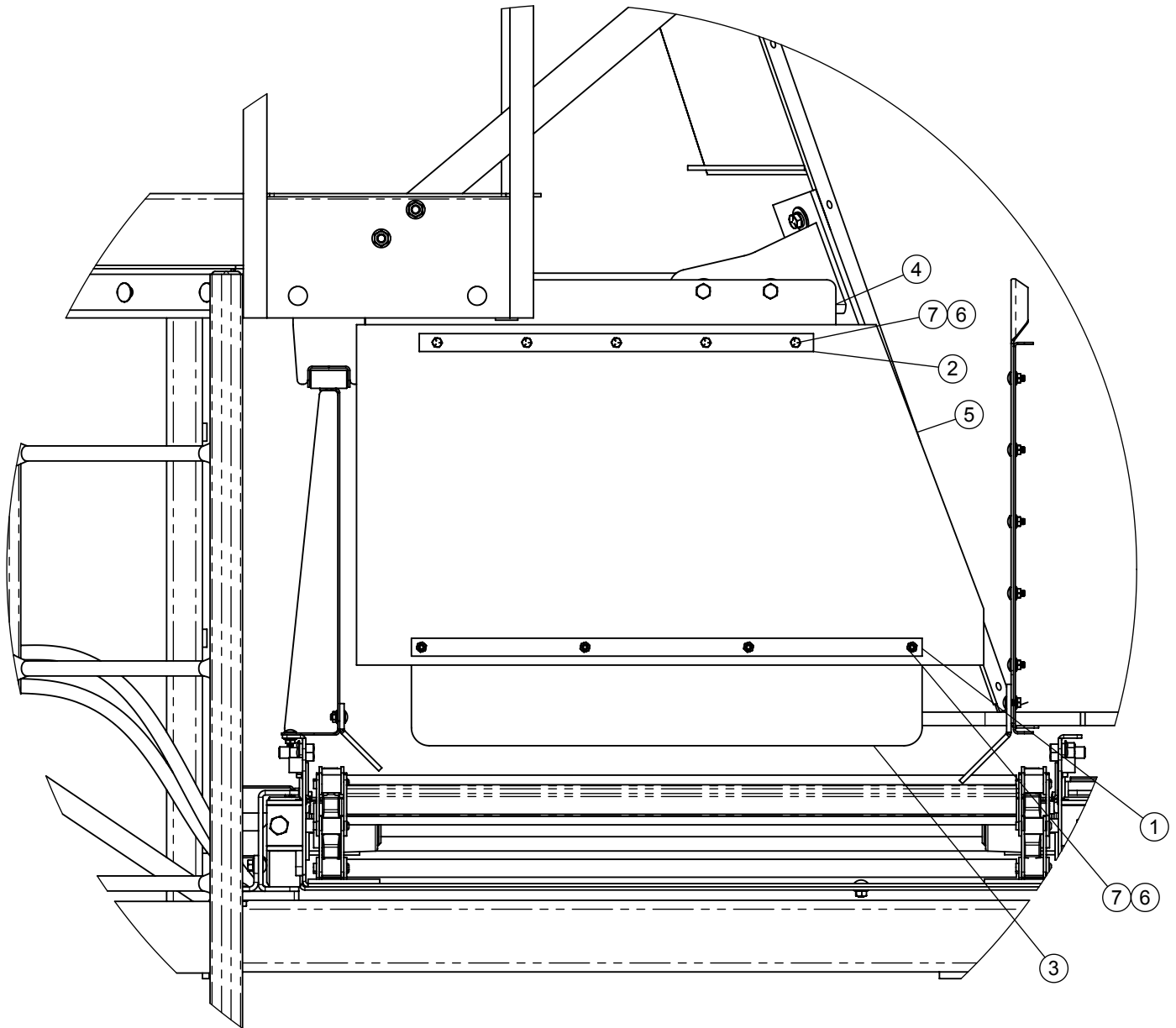
ITEM #	PART #	DESCRIPTION	QTY.
1	161532	CONVEYOR EXTENSION	1
2	161774	DRIVE CHAIN COVER	4
3	161783	MOTOR MOUNT TUBE	2
4	161830	CONVEYOR CHAIN HOLD DOWN	8
5	161864	PLASTIC LINER 42"W ADJ CONVEYOR	1
6	161865	CONVEYOR GLIDE STRIP	2
7	161871	CONVEYOR EXTENSION	1
8	162026	PLASTIC STRAP	2
9	162090	PLASTIC LINER 42"W 58"L ADJ CONV	1
10	162091	CONVEYOR EXTENSION FRONT	1
11	162092	CONVEYOR EXTENSION REAR	1
12	162093	CONV GLIDE STRIP 4" x 53-1/8"	2
13	162126	MAGNET BAFFLE 42"W CONV	1
14	162139	CONVEYOR RUBBER BOLT PLATE	1
15	162140	42" CONVEYOR SPOUT RUBBER	1
16	162141	CONV RUBBER BACK UP PLATE	1
17	188304	CONVEYOR SPOUT RUBBER BAR - 4"	2
18	188418	SPOUT RUBBER SIDE BAR - 4"	2
19	320516	COUPLER CHAIN #50-2 RC x 16	2
20	332606	COUPLER SPROCKET, 50B16 x 1"	4
21	340316	FLANGE BEARING 1" 4 BOLT RCJC	8
22	360015	HYDRAULIC MOTOR 17.9 CU IN.	2
23	362240	CHECK VALVE, 5 PSI (1/2" FP x 1/2" FP)	2
24	364055	HYDRAULIC CYLINDER 2" x 8", 20-1/4" CC	3
25	368007	HYD FITTING 3/8MP x 3/8FP 90 .109 ORF	6
26	368028	HYD SWIVEL 90° 1/2"MP x 3/8"FP	2
27	368052	HYDRAULIC FITTING 7/8"MOR x 1/2"FPX 45°	4
28	368111	STRAIGHT ADAPTER 1/2" x 1/2"FP SWIVEL	12
29	368609	TEE 1/2"FP x 1/2"FP x 1/2"FP	6
30	368642	HEX NIPPLE 1/2" x 1/2" MP	2
31	368680	STRAIGHT ADAPTOR 1/2" MP x 3/8" MP	4
32	400106	HEX NUT, 5/16"-18 SERRATED FLANGE #5 PLTD	35
33	400107	HEX NUT, 3/8"-16 SERRATED FLANGE #5	52
34	400115	HEX NUT, 5/8"-11 SERRATED FLANGE #5 PLTD	8
35	401105	HEX NUT, 5/16"-18 NYLOC #5 PLTD	48
36	401106	HEX NUT, 3/8"-16 NYLOC #5 PLTD	4
37	402004	SPRING LOCK WASHER 1/4" PLTD	8
38	402106	EXTERNAL STAR LOCKWASHER 3/8"	8
39	402405	FLAT WASHER 5/16" MED PLTD	36
40	402506	FLAT WASHER 3/8" SAE PLTD	4
41	405601	HHCS 1/4"-20 x 5/8" USS #5 PLTD.	8
42	405628	HHCS 5/16"-18 x 1" #5 PLTD	36
43	405652	HHCS 3/8"-16 x 3/4" #5 PLTD	8
44	407020	CHCS 5/16"-18 x 3/4" #5 PLTD	9
45	407021	CHCS 5/16"-18 x 1" #5 PLTD	38
46	407039	CHCS 3/8"-16 x 3/4" #5 PLTD	20
47	407040	CHCS 3/8"-16 x 1" #5 PLTD	4
48	407041	CHCS 3/8"-16 x 1-1/4" #5 PLTD	16
49	407128	CHCS 5/8" x 4" #5 PLTD	8
50	407904	HHCS 3/8"-16 x 1-1/4" SERRATED #5 PLTD	16
51	409916	WOODRUFF KEY 1/4" x 1"	4
52	860515	ADJUSTABLE CONVEYOR PAN WA 42"W x 39"L	1
53	860524	CONVEYOR DRIVE SHAFT 42"W ADJ	2
54	860525	PIVOT PLATE WA 42"W x 39"L	1
55	860526	PIVOTING CONVEYOR WA 42"W x 39"L	1
56	860538	SHAFT COVER WA	2
57	860604	PIVOT PLATE WA 42"W x 58"L	1
58	860605	PIVOTING CONVEYOR WA 42"W x 58"L	1
59	860606	ADJUSTABLE CONV PAN WA 42"W x 58"L	1
60	W157293	MAGNET 30 OZ	2

625 TRAILER 42" AJUSTABLE CONVEYOR MAGNET KIT #660263



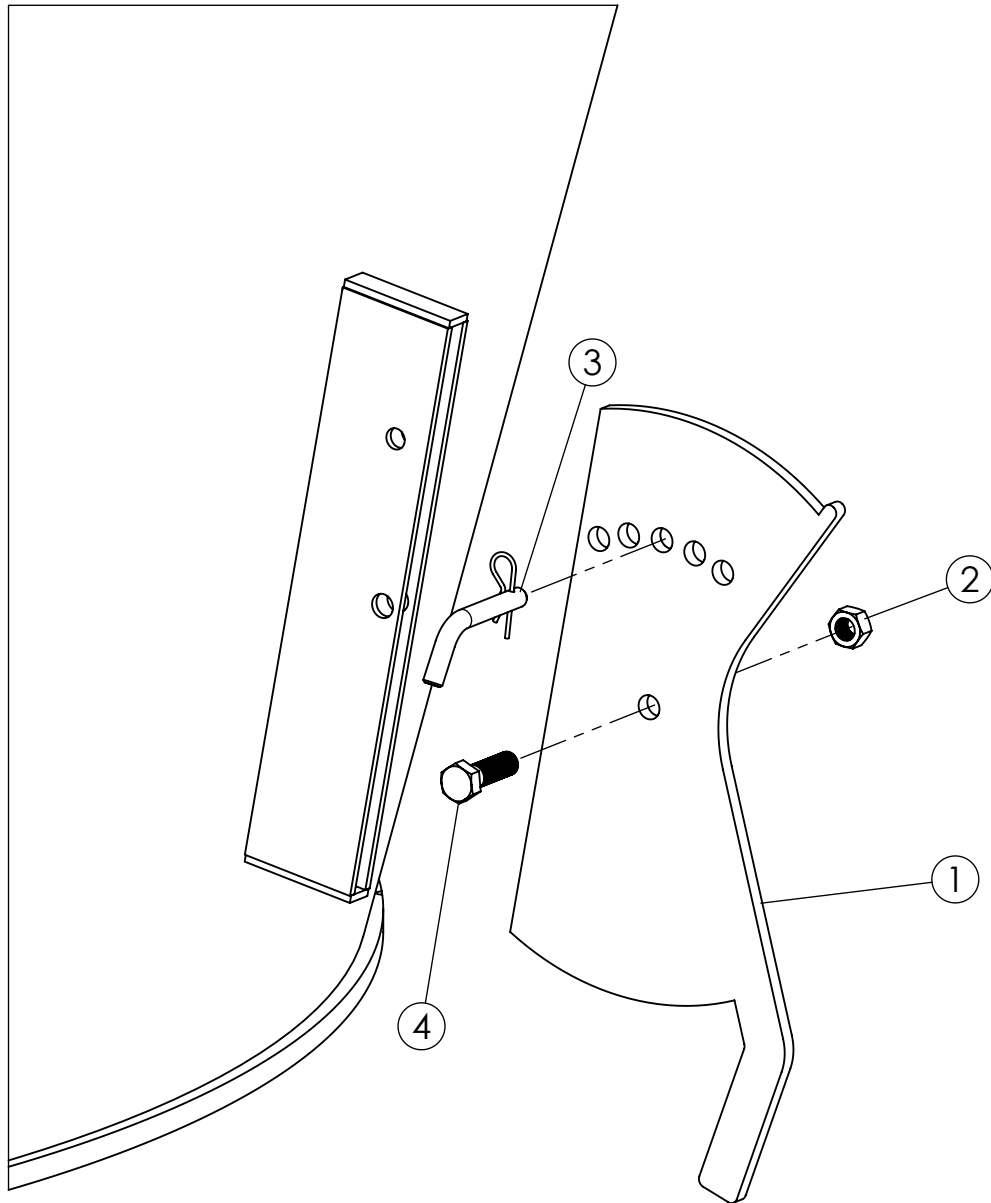
ITEM NO.	PART NO.	DESCRIPTION	QTY.
1	162126	MAGNET BAFFLE 42"W CONV	1
2	400106	HEX NUT, 5/16"-18 SERRATED FLANGE #5 PLTD	16
3	401106	HEX NUT, 3/8"-16 NYLOC #5 PLTD	4
4	402506	FLAT WASHER 3/8" SAE PLTD	4
5	407021	CHCS 5/16"-18 x 1" #5 PLTD	16
6	407040	CHCS 3/8"-16 x 1" #5 PLTD	4
7	W157293	MAGNET 30 OZ	2

625 TRAILER CONVEYOR RUBBER FLAP KIT #660369



ITEM NO.	PART NO.	DESCRIPTION	QTY.
1	161509	STRAP	1
2	161867	RUBBER SUPPORT PLATE	1
3	162620	DEFLECTOR BOTTOM PLATE	1
4	162717	CONV RUBBER BOLT PLATE - 625-865	1
5	162719	CONVEYOR RUBBER FLAP - 625-865	1
6	401105	HEX NUT, 5/16"-18 NYLOC #5 PLTD	9
7	405628	HHCS 5/16"-18 x 1" #5 PLTD	9

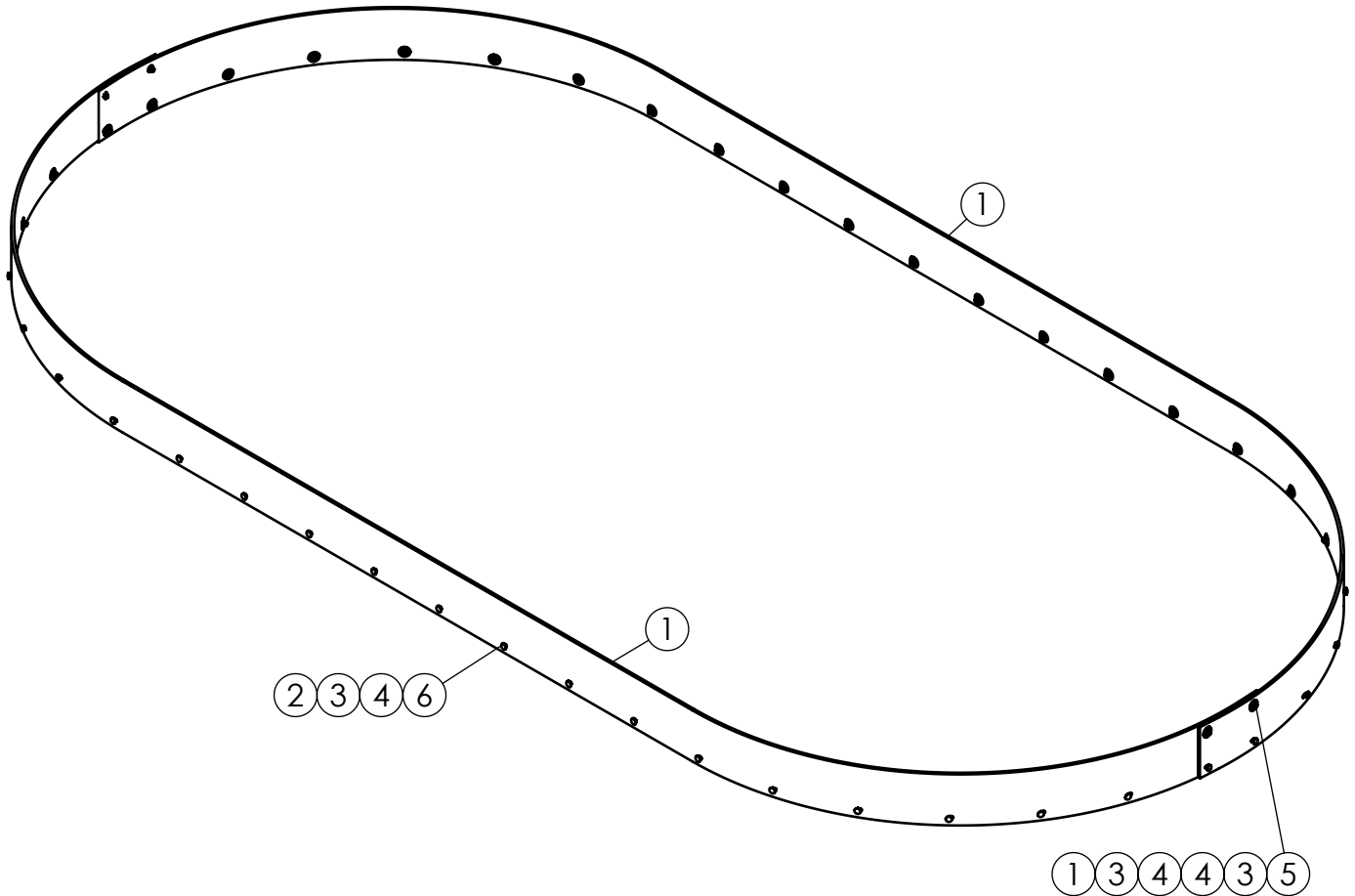
625 TRAILER KNIFE GATE ASSEMBLY



ITEM #	PART #	DESCRIPTION	QTY
1	161086	325/425 TUB KNIFE	1
2	400912	HEX CROWN LOCK NUT 3/4"-10 #5 PLTD	1
3	404209	PIN, 5/8" x 4", RECEIVER HITCH	1
4	405781	HHCS 3/4"-10 x 2-1/2" #5 PLTD	1

625 TRAILER RUBBER EXTENSION

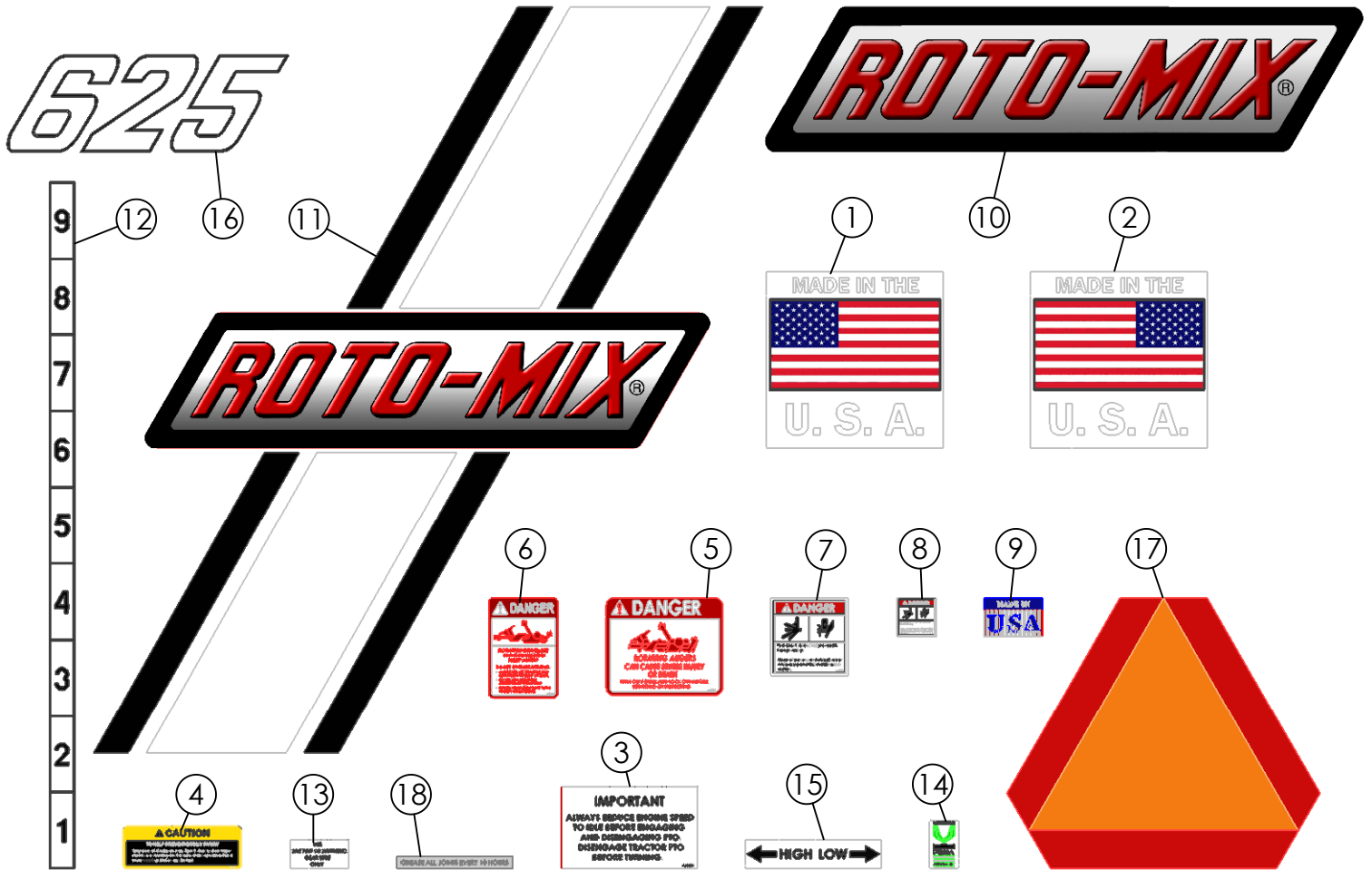
#660274



ITEM #	PART #	DESCRIPTION	QTY.
1	161300	625 RUBBER EXT. END	2
2	401106	HEX NYLOC NUT #5 Pltd 3/8" -16	48
3	402406	FLAT WASHER 3/8" PLTD	52
4	402606	FENDER WASHER 3/8" x 1 1/2" PLTD	52
5	405655	HHCS 3/8"-16 x 1 1/2" #5 PLTD	4
6	407041	CHCS 3/8"-16 x 1-1/4" #5 PLTD	40
7	407042	CHCS 3/8"-16 x 1-1/2" #5 PLTD	4

625 TRAILER DECALS

#660270



ITEM #	PART #	DESCRIPTION	QTY.
1	440045	DECAL, MADE IN THE USA, 9 x 9 WHITE LH	1
2	440046	DECAL, MADE IN THE USA, 9x9 RH WHT	1
3	440801	DECAL, REDUCE ENGINE SPEED 4-1/4" x 7"	3
4	440818	DECAL, (WARNING-CHUTE) 2-1/4" x 6-1/8"	2
5	440827	DECAL, DANGER: ROTATING AUGERS	4
6	440830	DECAL, DANGER PTO DRIVELINE	1
7	440833	DECAL, DANGER PINCH POINT 4" x 4"	1
8	440833-M	DECAL, DANGER PINCH POINT 2" x 2"	2
9	440844	DECAL, MADE IN USA	1
10	440890	DECAL, ROTO-MIX	1
11	440898	DECAL, ROTO-MIX WHITE STRIPE 38-1/2 H	1
12	440912	DECAL, DOOR HEIGHT 1-5/16" x 35-1/2"	1
13	440954	DECAL, USE SYNTHETIC 75W-90 ONLY	2
14	440967	DECAL, MEMBER FEMA	1
15	440986	GEARBOX SPEED DECAL	1
16	440988	DECAL, 625 WHITE	1
17	441405	DECAL SMV	1
18	441661	GREASE EVERY 10 HOURS DECAL	2

This Page intentionally left blank.